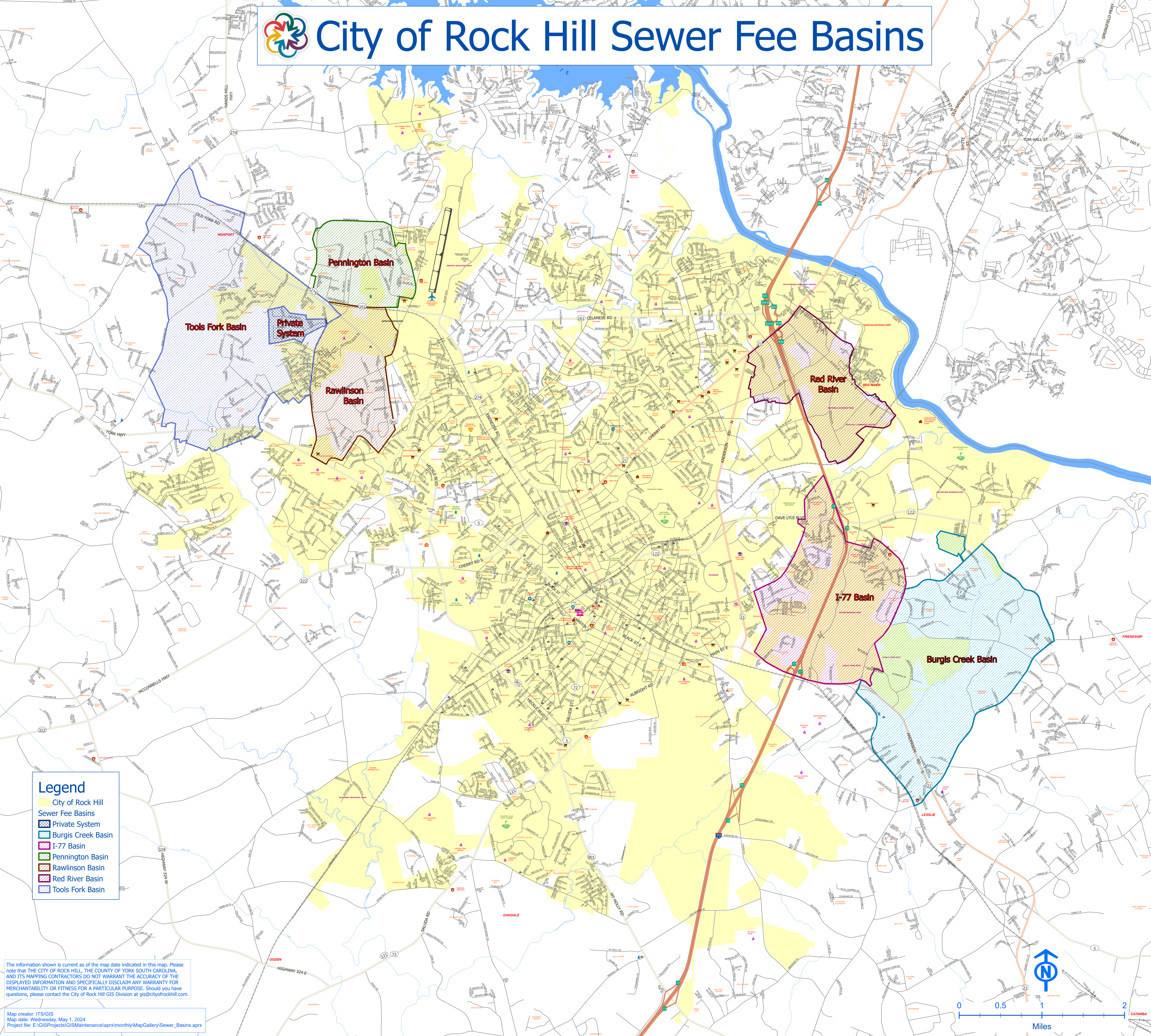




City of Rock Hill Sewer Fee Basins



Legend

- City of Rock Hill
- Sewer Fee Basins
- Private System
- Burgis Creek Basin
- I-77 Basin
- Pennington Basin
- Rawlinson Basin
- Red River Basin
- Tools Fork Basin

The information shown is current as of the map date indicated in this map. Please note that THE CITY OF ROCK HILL, THE COUNTY OF YORK SOUTH CAROLINA, AND ITS MAPPING CONTRACTORS DO NOT WARRANT THE ACCURACY OF THE DISPLAYED INFORMATION AND SPECIFICALLY DISCLAIM ANY WARRANTY FOR MERCHANTABILITY OR FITNESS FOR A PARTICULAR PURPOSE. Should you have questions, please contact the City of Rock Hill GIS Division at gis@cityofrockhill.com.

Map creator: ITS/GIS
 Map date: Wednesday, May 1, 2024
 Project file: E:\GIS\Projects\GIS\Maintenance\aprx\monthly\MapGallery\Sewer_Basins.aprx

0 0.5 1 2

 Miles