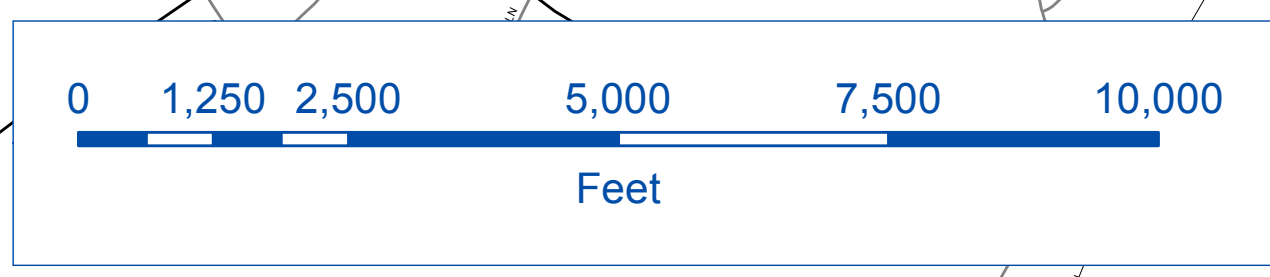
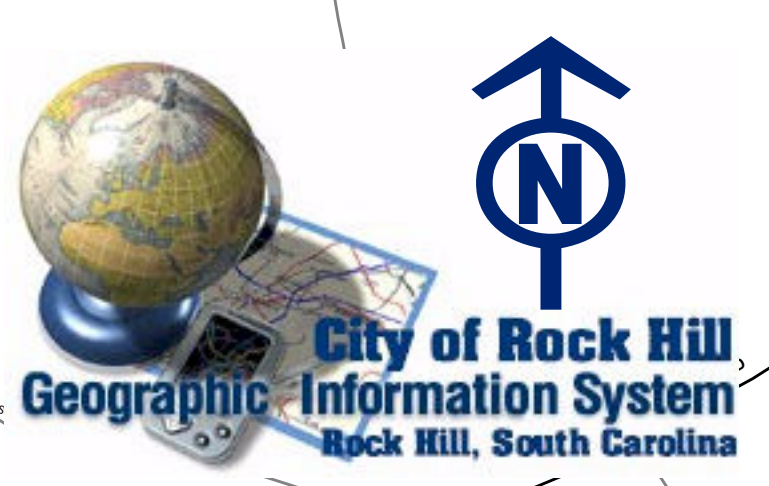
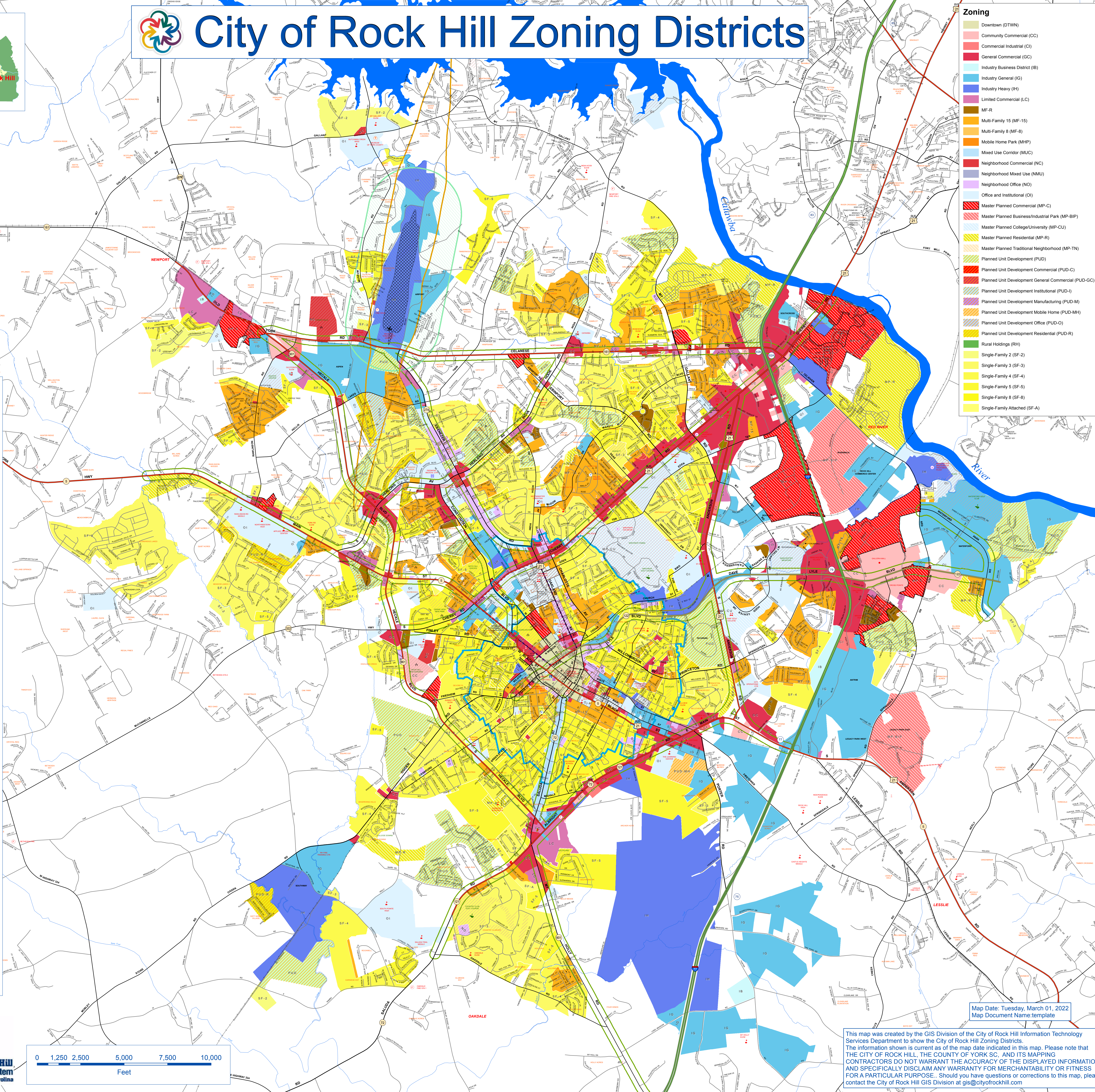


City of Rock Hill Zoning Districts

- ### Zoning
- Downtown (DTWN)
 - Community Commercial (CC)
 - Commercial Industrial (CI)
 - General Commercial (GC)
 - Industry Business District (IB)
 - Industry General (IG)
 - Industry Heavy (IH)
 - Limited Commercial (LC)
 - MF-R
 - Multi-Family 15 (MF-15)
 - Multi-Family 8 (MF-8)
 - Mobile Home Park (MHP)
 - Mixed Use Corridor (MUC)
 - Neighborhood Commercial (NC)
 - Neighborhood Mixed Use (NMU)
 - Neighborhood Office (NO)
 - Office and Institutional (OI)
 - Master Planned Commercial (MP-C)
 - Master Planned Business/Industrial Park (MP-BIP)
 - Master Planned College/University (MP-CU)
 - Master Planned Residential (MP-R)
 - Master Planned Traditional Neighborhood (MP-TN)
 - Planned Unit Development (PUD)
 - Planned Unit Development Commercial (PUD-C)
 - Planned Unit Development General Commercial (PUD-GC)
 - Planned Unit Development Institutional (PUD-I)
 - Planned Unit Development Manufacturing (PUD-M)
 - Planned Unit Development Mobile Home (PUD-MH)
 - Planned Unit Development Office (PUD-O)
 - Planned Unit Development Residential (PUD-R)
 - Rural Holdings (RH)
 - Single-Family 2 (SF-2)
 - Single-Family 3 (SF-3)
 - Single-Family 4 (SF-4)
 - Single-Family 5 (SF-5)
 - Single-Family 8 (SF-8)
 - Single-Family Attached (SF-A)

Legend

- #### Points of Interest
- Airport
 - Cemetery
 - Church
 - City Hall
 - College
 - EMS Station
 - Fire Station
 - Golf Course
 - Hospital
 - Library
 - Museum
 - Police Station
 - Public Building
 - School
 - Shopping Center
- #### Infrastructure
- Interstate
 - Other Free/Expressway
 - Other Prin Arterial
 - Minor Arterial
 - Major Collector
 - Local
 - Dock
 - Drive
 - Railroad
 - Creek
- #### Landmarks
- Water Bodies
 - Parks
 - Old Town
 - Textile Corridor
 - Road Corridor (YR-1)
 - Airport Use Zone
 - Airport Influence Zone
 - Airport Compatibility Zone



Map Date: Tuesday, March 01, 2022
Map Document Name: template

This map was created by the GIS Division of the City of Rock Hill Information Technology Services Department to show the City of Rock Hill Zoning Districts. The information shown is current as of the map date indicated in this map. Please note that THE CITY OF ROCK HILL, THE COUNTY OF YORK SC, AND ITS MAPPING CONTRACTORS DO NOT WARRANT THE ACCURACY OF THE DISPLAYED INFORMATION AND SPECIFICALLY DISCLAIM ANY WARRANTY FOR MERCHANTABILITY OR FITNESS FOR A PARTICULAR PURPOSE. Should you have questions or corrections to this map, please contact the City of Rock Hill GIS Division at gis@cityofrockhill.com