



CITY OF WASILLA

290 E. HERNING AVE.
WASILLA, ALASKA 99654-7091
PHONE: (907) 373-9050
FAX: (907) 373-9085

BOOK 0791 PAGE 737

REQUESTED BY: FINANCE DIRECTOR
PREPARED BY: CLERK'S OFFICE

RESOLUTION NO. WR94-53

*Amended by
Res. WR94-61
See attached Resolution
WR94-61*

A RESOLUTION OF THE CITY OF WASILLA, ALASKA CONFIRMING THE SPECIAL ASSESSMENT ROLL OF MOUNTAIN VILLAGE PAVING ASSESSMENT DISTRICT NO. 93P2 AND PROVIDING FOR THE LEVY AND PAYMENT OF THE ASSESSMENT 93P2.

WHEREAS, pursuant to Resolution No. WR93-26, the City of Wasilla, Alaska (the "City"), created Mountain Village Paving Assessment District No. 93P2, provided a method of assessment on property benefitted within Mountain Village Paving Assessment District No. 93P2, and provided for the levying of an assessment thereon; and

WHEREAS, pursuant to Resolution No. WR93-26, the City Council of the City of Wasilla directed the Finance Director to keep an account of all expenses of the improvement and provided for the assessment of the costs of the assessment; and

WHEREAS, an accounting of all expenses of the improvement have been made, the Special Assessment Roll for Mountain Village Paving Assessment District No. 93P2 has been prepared and notice of hearing on the Special Assessment Roll was regularly given in accordance with the City of Wasilla Title 2.60; and

WHEREAS, a public hearing on the Special Assessment Roll was held on October 10, 1994 and all corrections found necessary to the Special Assessment Roll have been made;

NOW THEREFORE BE IT RESOLVED, by the City Council that the Special Assessment Roll of Mountain Village Paving Assessment District No. 93P2 as prepared by the Finance Director is hereby confirmed;

BE IT FURTHER RESOLVED, that by virtue of the confirmation of the assessment roll, the assessments as set forth therein together with the aforementioned modifications, if any, are hereby declared to be payable and are a first lien prior and paramount to all liens except for real property taxes and collectible as such in accordance with AS 29.46 and CW 2.60.

The amounts assessed against each parcel of property as set forth in the assessment roll shall be paid as follows:

1. The assessment may be paid in one lump sum on or before November 10, 1994 without penalty or interest.
2. If the assessment is not prepaid as provided in Item 1 above, the assessment may be paid in ten (10) equal yearly installments, plus interest; the first such installment and interest payment to be due and payable on or before August 10, 1995, and each payment thereafter shall be due and

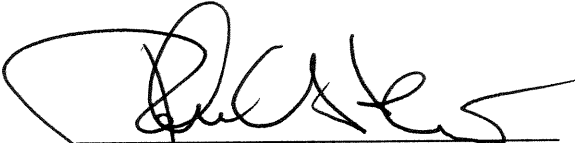
payable on or before August 10th of each year until paid.

3. Unpaid installment payments will bear interest at a rate of interest payable on the bonds issued to finance the improvements to Mountain Village Paving Assessment District No. 93P2 plus one percent (1%) for reserves payable on the balance of all unpaid installments, and such interest on the balance of the assessment due shall commence August 11, 1994.
4. Payments not made when due and payable under Item 2 above are delinquent on the day following the due date.
5. A penalty of eight percent (8%) shall be added to any assessment installment not paid before the date of delinquency. An additional penalty of eight percent (8%) shall be added on each anniversary of the date of delinquency that said assessment installment remains unpaid. Both the assessment installment and penalty shall draw interest at a rate three percent (3%) per annum higher than the rate payable on bonds issued to finance the improvements within the special assessment district until paid.

BE IT FURTHER RESOLVED, that the Special Assessment Roll as presented by the Finance Director, and reviewed and corrected where necessary, is hereby certified as the final and official assessment roll for Mountain Village Paving Assessment District No. 93P2.

I certify that a resolution in substantially the above form was passed by a majority of those voting at a duly called and conducted meeting of the governing body of the City of Wasilla this 10th day of October, 1994.

APPROVED:



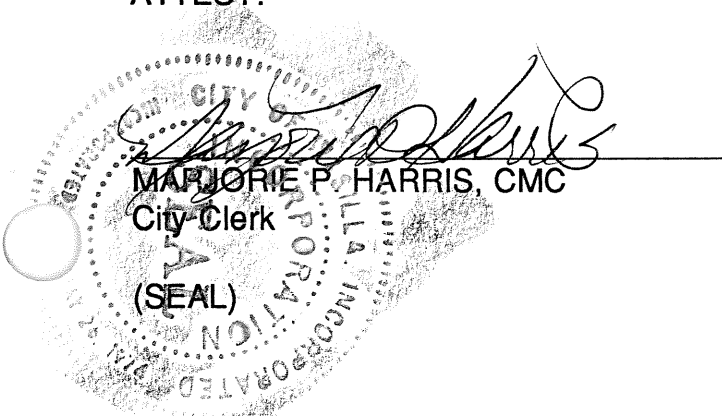
JOHN C. STEIN, Mayor

ATTEST:

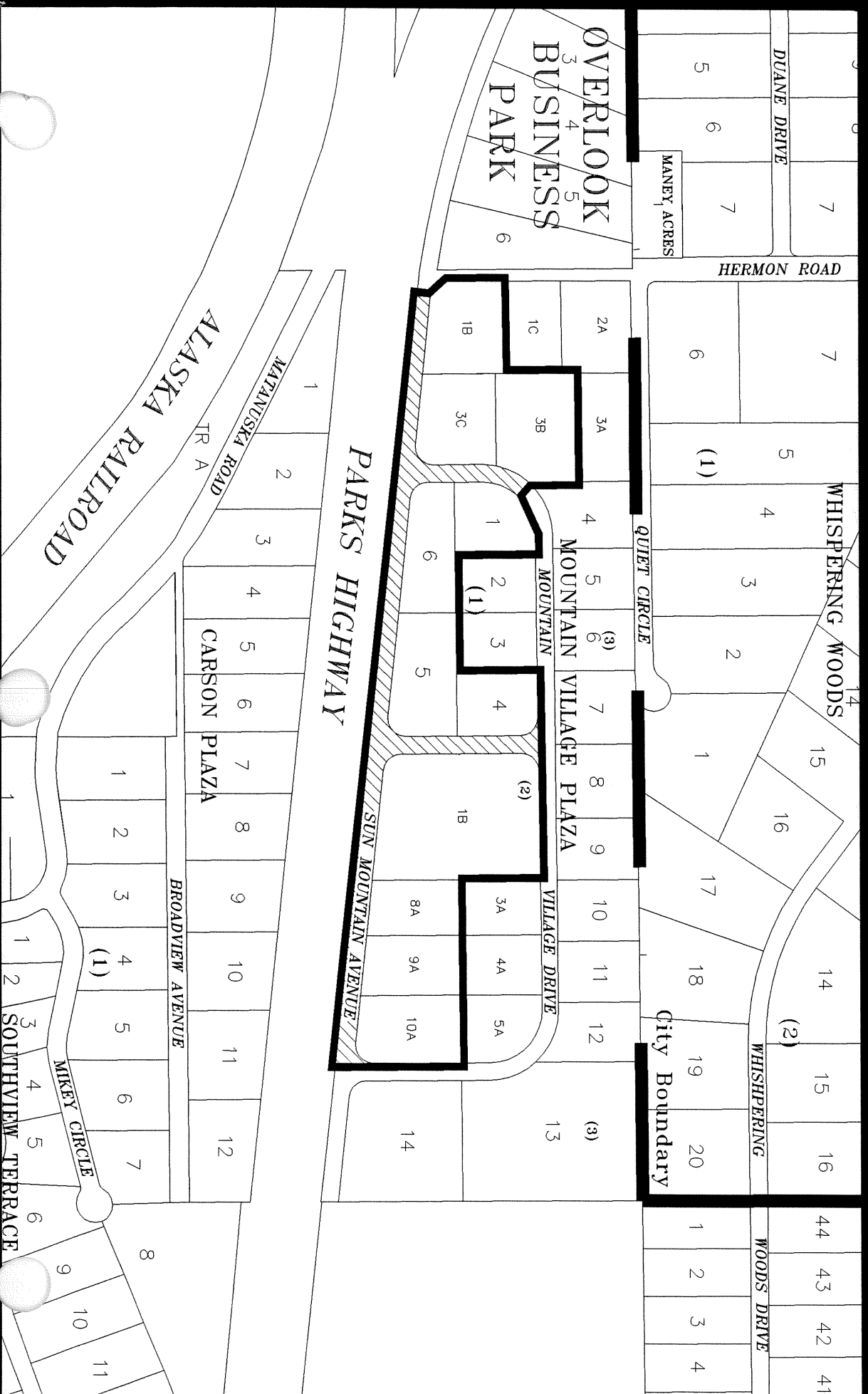


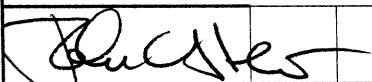
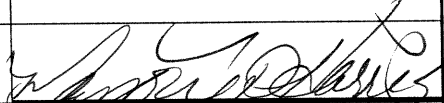
MARJORIE P. HARRIS, CMC
City Clerk

(SEAL)



Mountain Village Plaza Paving District #93P2



CITY OF WASILLA ASSESSMENT ROLL				
MT. VILLAGE PAVING LID #93P2				
MSB TAX NO.	LOT	BLOCK	OWNER	Total Assessment
MOUNTAIN VILLAGE PLAZA			PLAT NO.S 78-1,78-44, 82-48, 84-61, 85-46 & 86-75	
1408B01L001	1	1	Homesteaders Cache, Inc.	\$3,667.07
1408B01L004	4	1	Homesteaders Cache, Inc.	\$3,667.07
1408B01L005	5	1	Harold J. Nye	\$3,667.07
1408B01L006	6	1	Homesteaders Cache, Inc.	\$3,667.07
2977B02L001B	1B	2	Harold J. Nye	\$3,667.07
2304B02L008A	8A	2	Nye Frontier Ford	\$3,667.07
2304B02L009A	9A	2	Harold J. Nye	\$3,667.07
2304B02L010A	10A	2	Gittlein, Paul & Trudi D S	\$3,667.07
3224B03L001B	1B	3	Richard & Aesook Tzou	\$3,667.07
2703B03L003B	3B	3	El Toro II, Inc.	\$3,667.07
2703B03L003C	3C	3	El Toro II, Inc.	\$3,667.07
				\$40,337.77
(A \$2.00 ADMINISTRATIVE FE IS TO BE ADDED TO EACH INDIVIDUAL ASSESSMENT PAYMENT AT THE TIME OF EACH PAYMENT PER CITY OF WASILLA RESOLUTION WR86-09)				
WE, THE MAYOR AND CITY CLERK OF THE CITY OF WASILLA, ALASKA HEREBY CERTIFY THAT THIS IS THE CONFIRMED ASSESSMENT ROLL FOR PAVING ASSESSMENT DISTRICT 93P2. ALL CORRECTIONS AS DIRECTED BY THE CITY COUNCIL HAVE BEEN MADE. THE WASILLA CITY COUNCIL CONFIRMED THIS ASSESSMENT ROLL IN RESOLUTION NO. WR94-53				
				
JOHN C. STEIN, MAYOR			MARJORIE D. HARRIS, CMC CITY CLERK	



CITY OF WASILLA

REQUESTED BY: FINANCE DEPARTMENT
PREPARED BY: CLERK'S OFFICE

290 E. HERNING AVE.
WASILLA, ALASKA 99654-7091
PHONE: (907) 373-9050
FAX: (907) 373-9085

RESOLUTION NO. WR94-61

A RESOLUTION OF THE CITY OF WASILLA, ALASKA CORRECTING THE SPECIAL ASSESSMENT ROLL OF MOUNTAIN VILLAGE PAVING ASSESSMENT DISTRICT NO. 93P2.

WHEREAS, pursuant to Resolution No. WR93-26, the City of Wasilla, Alaska (the City), created Mountain Village Paving Assessment District No. 93P2, provided a method of assessment on property benefited within Mountain Village Paving Assessment District No. 93P2, and provided for the levying of an assessment thereon; and

WHEREAS, pursuant to Resolution No. WR94-53, the Assessment Roll for Mountain Village was confirmed; and

WHEREAS, an error was discovered subsequent to said confirmation involving Lot 1B, Block 2, Mountain Village Subdivision; and

WHEREAS, the owner of said lot has accepted the corrected assessment on Lot 1B, Block 2 of Mountain Village Subdivision and waived its right to any additional notice and its right to object to or protest or appeal the amount of the corrected assessment in writing;


NOW THEREFORE BE IT RESOLVED, that the Corrected Assessment Roll for Mountain Village Paving Assessment District No. 93P2 is hereby certified as the final and official assessment roll for Mountain Village Paving Assessment District No. 93P2;

BE IT FURTHER RESOLVED, that all of the other terms and conditions of Resolution No. WR94-53 remain in place.

I certify that a resolution in substantially the above from was passed by a majority of those voting at a duly called and conducted meeting of the governing body of the City of Wasilla this 24th day of October, 1994.



JOHN C. STEIN, Mayor

ATTEST:
CITY

MARJORIE D. HARRIS, CMC
City Clerk
(SEAL)
INCORPORATED