



CITY OF WASILLA

290 E. HERNING AVE.
WASILLA, ALASKA 99654-7091
PHONE: (907) 373-9050
FAX: (907) 373-9085

BOOK 0791 PAGE 743

REQUESTED BY: FINANCE DIRECTOR
PREPARED BY: CLERK'S OFFICE

RESOLUTION NO. WR94-52

A RESOLUTION OF THE CITY OF WASILLA, ALASKA CONFIRMING THE SPECIAL ASSESSMENT ROLL OF CRESTWOOD PAVING ASSESSMENT DISTRICT NO. 93P3 AND PROVIDING FOR THE LEVY AND PAYMENT OF THE ASSESSMENT.

WHEREAS, pursuant to Resolution No. WR93-27, the City of Wasilla, Alaska (the "City"), created Crestwood Paving Assessment District No. 93P3, provided a method of assessment on property benefitted within Crestwood Paving Assessment District No. 93P3, and provided for the levying of an assessment thereon; and

WHEREAS, pursuant to Resolution No. WR93-27, the City Council of the City of Wasilla directed the Finance Director to keep an account of all expenses of the improvement and provided for the assessment of the costs of the assessment; and

WHEREAS, an accounting of all expenses of the improvement have been made, the Special Assessment Roll for Crestwood Paving Assessment District No. 93P3 has been prepared and notice of hearing on the Special Assessment Roll was regularly given in accordance with the City of Wasilla Title 2.60; and

WHEREAS, a public hearing on the Special Assessment Roll was held on October 10, 1994 and all corrections found necessary to the Special Assessment Roll have been made;

NOW THEREFORE BE IT RESOLVED, by the City Council that the Special Assessment Roll of Crestwood Paving Assessment District No. 93P3 as prepared by the Finance Director is hereby confirmed;

BE IT FURTHER RESOLVED, that by virtue of the confirmation of the assessment roll, the assessments as set forth therein together with the aforementioned modifications, if any, are hereby declared to be payable and are a first lien prior and paramount to all liens except for real property taxes and collectible as such in accordance with AS 29.46 and CW 2.60.

The amounts assessed against each parcel of property as set forth in the assessment roll shall be paid as follows:

1. The assessment may be paid in one lump sum on or before November 10, 1994 without penalty or interest.
2. If the assessment is not prepaid as provided in Item 1 above, the assessment may be paid in ten (10) equal yearly installments, plus interest; the first such installment to be due and payable on or before August 10,


1995, and each payment thereafter shall be due and payable on or before August 10th of each year until paid.

3. Unpaid installment payments will bear interest at a rate of interest payable on the bonds issued to finance the improvements to Crestwood Paving Assessment District No. 93P3 plus one percent (1%) for reserves, payable on the balance of all unpaid installments, and such interest on the balance of the assessment due shall commence August 11, 1994.
4. Payments not made when due and payable under Item 2 above are delinquent on the day following the due date.
5. A penalty of eight percent (8%) shall be added to any assessment installment not paid before the date of delinquency. An additional penalty of eight percent (8%) shall be added on each anniversary of the date of delinquency that said assessment installment remains unpaid. Both the assessment installment and penalty shall draw interest at a rate three percent (3%) per annum higher than the rate payable on bonds issued to finance the improvements within the special assessment district until paid.

BE IT FURTHER RESOLVED, that the Special Assessment Roll as presented by the Finance Director, and reviewed and corrected where necessary, is hereby certified as the final and official assessment roll for Crestwood Paving Assessment District No. 93P3.

I certify that a resolution in substantially the above form was passed by a majority of those voting as a duly called and conducted meeting of the governing body of the City of Wasilla this 10th day of October, 1994.

APPROVED:



JOHN C. STEIN, Mayor

ATTEST:

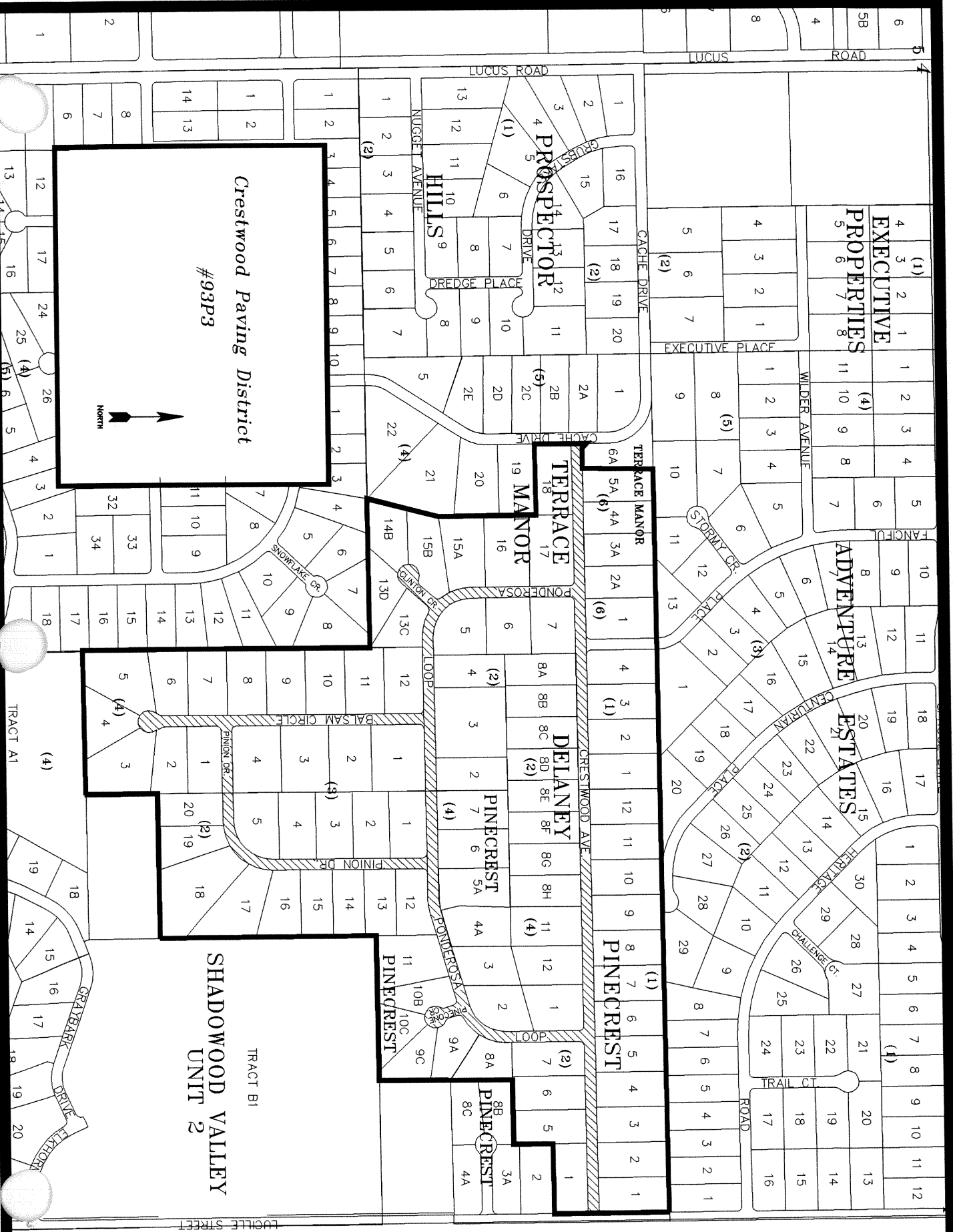


MARJORIE P. HARRIS, CMC
City Clerk

(SEAL)

CITY OF WASILLA

INCORPORATED 1975





SCALE 5 FEET

1357B04L016	16	4	M-W Drilling Inc, EMP PST	\$1,425.65
1357B04L017	17	4	Jimmie W. & Selva J. Lanz	\$1,425.65
1357B04L018	18	4	Alex & Shelly Dushkin Jr.	\$1,425.65
1357B06L001	1	6	Ronald M. & Kelly L. Moore	\$1,425.65
2288B06L002A	2A	6	Donald R & Cindy Schmelz	\$1,425.65
2288B06L003A	3A	6	Scot N. & Leslie L. Woolsey	\$1,425.65
2288B06L004A	4A	6	Wm. O & Darla Dean Plate	\$1,425.65
2288B06L005A	5A	6	Jackie F Carpenter	\$1,425.65
PINECREST SUBDIVISION			PLAT #'S 77-135, 79-372,79-446 & 83-117	
1356B01L001	1	1	Alroy I & G.J. Robinson	\$1,425.65
1356B01L002	2	1	Billy Ray & Ann E. Smith	\$1,425.65
1356B01L003	3	1	Michael H. & Cheryl White	\$1,425.65
1356B01L004	4	1	Phillip N. & C.C. Carr	\$1,425.65
1356B01L005	5	1	Michael & Kenna Lutes	\$1,425.65
1356B01L006	6	1	Harvey W. Hamilton	\$1,425.65
1356B01L007	7	1	Elizabeth N. Peet	\$1,425.65
1356B01L008	8	1	Gregg J Douglas	\$1,425.65
1356B01L009	9	1	J.L. McCarry III	\$1,425.65
1356B01L010	10	1	Gregory G. & S.L. Plummer	\$1,425.65
1356B01L011	11	1	Gregory G. & S.L. Plummer	\$1,425.65
1356B01L012	12	1	Gregory G. & S.L. Plummer	\$1,425.65
1356B02L001	1	2	Craig A. & Jessica Blake	\$1,425.65
1356B02L005	5	2	Elizabeth Ann Salazar	\$1,425.65
1356B02L006	6	2	Scott M. & J.L. Williams	\$1,425.65
1356B02L007	7	2	Gerald L. & Rosa S. Brunner	\$1,425.65
2496B02L008A	8A	2	Lance & Doothy Schubert	\$1,425.65
1723B02L009A	9A	2	Jerome R. & S.D. Raskey	\$1,425.65
3716B02L009C	9C	2	Jeffrey C. & LL Mansavage	\$1,425.65
1723B02L010B	10B	2	Wm. & Elizabeth Little	\$1,425.65
3716B02L010C	10C	2	Clayton & J.M. Darrow	\$1,425.65
1356B02L011	11	2	Tad Gilbert	\$1,425.65
1356B02L012	12	2	Rossie Lucille Steward	\$1,425.65
1356B02L013	13	2	Ronald W. & Shannon Goodwin	\$1,425.65
1356B02L014	14	2	Leland E. & J.D. VanBuskirk	\$1,425.65
1356B02L015	15	2	David W & Crystal D. Stull	\$1,425.65
1356B02L016	16	2	Alaska Housing Finance Corp.	\$1,425.65
1356B02L017	17	2	Richard K. & K.D. Breeden	\$1,425.65
1356B02L018	18	2	Karl & Joyce Lund	\$1,425.65
1356B02L019	19	2	Randall L. Apling	\$1,425.65
1356B02L020	20	2	Wayne & J.A. Fleming Jr.	\$1,425.65
1356B03L001	1	3	Patricia L. Daly	\$1,425.65
1356B03L002	2	3	Larry C. & F.M. VanPatten	\$1,425.65
1356B03L003	3	3	Allen & D.J. Palmer	\$1,425.65
1356B03L004	4	3	Andrew DeVries	\$1,425.65
1356B03L005	5	3	Jack L & Sondra L Pugh	\$1,425.65
1356B04L001	1	4	G. Mark & Peggy K. Sumpter	\$1,425.65

1356B04L002	2	4	Florence E. Schlegel	\$1,425.65
1356B04L003	3	4	M-W Drilling Inc, Emp.	\$1,425.65
1356B04L006	6	4	Lane G. & Lois Rice	\$1,425.65
1356B04L007	7	4	M-W Drilling Inc Emp Pst	\$1,425.65
1356B04L011	11	4	Hal J. & Glenna L. Gilmore	\$1,425.65
1356B04L012	12	4	M-W. Drilling Inc, EMP PST	\$1,425.65
1787000L004A	4A		Willian A. Rice	\$1,425.65
1787000L005A	5A		Ronald Dean Mistler	\$1,425.65
				\$132,585.45

(A \$2.00 ADMINISTRATIVE FEE IS TO BE ADDED TO EACH INDIVIDUAL ASSESSMENT PAYMENT AT THE TIME OF EACH BILLING PER CITY OF WASILLA RESOLUTION WR86-09)

WE, THE MAYOR AND CITY CLERK OF THE CITY OF WASILLA, ALASKA HERBY CERTIFY THAT THIS IS THE CONFIRMED ASSESSMENT ROLL FOR PAVING ASSESSMENT DISTRICT 93P3. ALL CORRECTIONS AS DIRECTED BY THE CITY COUNCIL HAVE BEEN MADE. THE WASILLA CITY COUNCIL CONFIRMED THIS ASSESSMENT ROLL IN RESOLUTION NO. WR94-52.

	
JOHN C. STEIN, MAYOR	MARJORIE D. HARRIS, CMC
12/2/94	CITY CLERK

Return to:
 City of Wasilla
 290 E. Herning Ave
 Wasilla, Ak. 99654

94-020245 296 cc

PALMER REC. DISTRICT
 REQUESTED BY _____

RETURN TO
 CITY OF WASILLA
 290 E. Herning Avenue
 Wasilla, AK 99654

'94 DEC 21 AM 9 03