



CITY OF WASILLA

290 E. HERNING AVE.
WASILLA, ALASKA 99654-7091
PHONE: (907) 373-9050
FAX: (907) 373-9085

REQUESTED BY: Finance Director
PREPARED BY: Municipal Services

RESOLUTION NO. WR93-45

A RESOLUTION OF THE CITY OF WASILLA, ALASKA CONFIRMING THE SPECIAL ASSESSMENT ROLL OF GLENWOOD AVENUE WEST PAVING ASSESSMENT DISTRICT NO. 92P2 AND PROVIDING FOR THE LEVY AND PAYMENT OF THE ASSESSMENT.

WHEREAS, pursuant to Resolution No. WR92-33, the City of Wasilla, Alaska (the "City"), created Glenwood Avenue West Paving Assessment District No. 92P2, provided a method of assessment on property benefitted within Glenwood Avenue West Paving Assessment District No. 92P2, and provided for the levying of an assessment thereon; and

WHEREAS, pursuant to Resolution No. WR92-33, the City Council of the City of Wasilla directed the Finance Director to keep an account of all expenses of the improvement and provided for the assessment of the costs of the assessment; and

WHEREAS, an accounting of all expenses of the improvement have been made, the Special Assessment Roll for Glenwood Avenue West Paving Assessment District No. 92P2 has been prepared and notice of hearing on the Special Assessment Roll was regularly given in accordance with the City of Wasilla Title 2.60; and

WHEREAS, a public hearing on the Special Assessment Roll was held on November 8, 1993 and all corrections found necessary to the Special Assessment Roll have been made;

NOW THEREFORE BE IT RESOLVED, by the City Council that the Special Assessment Roll of Glenwood Avenue West Paving Assessment District No. 92P2 as prepared by the Finance Director is hereby confirmed;

BE IT FURTHER RESOLVED, that by virtue of the confirmation of the assessment roll, the assessments as set forth therein together with the aforementioned modifications, if any, are hereby declared to be payable and are a first lien prior and paramount to all liens except for real property taxes and collectible as such in accordance with AS 29.46 and CW 2.60.

The amounts assessed against each parcel of property as set forth in the assessment roll shall be paid as follows:

1. The assessment may be paid in one lump sum on or before December 8, 1993 without penalty or interest.
2. If the assessment is not prepaid as provided in Item 1 above, the

RESOLUTION NO. WR93-45
PAGE 2

assessment may be paid in ten (10) equal yearly installments, plus interest at the rate of interest payable on the bonds issued to finance the improvements to Glenwood Avenue West Paving Assessment District No. 92P2, the first such installment to be due and payable on or before September 8, 1994, and each installment thereafter shall be due and payable on or before September 8 of each year and ending on September 8, 2003.


3. Installment payments will bear interest at a rate of interest payable on the bonds issued to finance the improvements to Glenwood Avenue West Paving Assessment District No. 92P2, payable on the balance of all installments due and such interest on the balance of the assessment due shall commence September 9, 1993.

4. Delinquent dates shall be the day following the due dates noted in Item 2 above.


5. A penalty of eight percent (8%) shall be added to any assessment installment not paid before the date of delinquency. An additional penalty of eight percent (8%) shall be added on each anniversary of the date of delinquency that said assessment installment remains unpaid. Both the assessment installment and penalty shall draw interest at a rate three percent (3%) per annum higher than the rate payable on bonds issued to finance the improvements within the special assessment district until paid.

BE IT FURTHER RESOLVED, that the Special Assessment Roll as presented by the Finance Director, and reviewed and corrected where necessary, is hereby certified as the final and official assessment roll for Glenwood Avenue West Paving Assessment District No. 92P2.

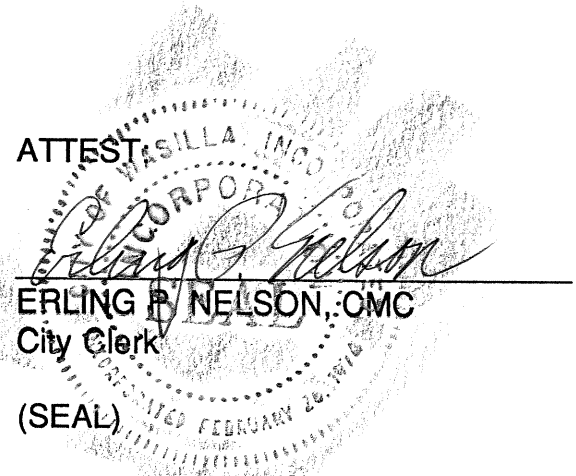
I certify that a resolution in substantially the above form was passed by a majority of those voting at a duly called and conducted meeting of the governing body of the City of Wasilla this 8 day of November, 1993.



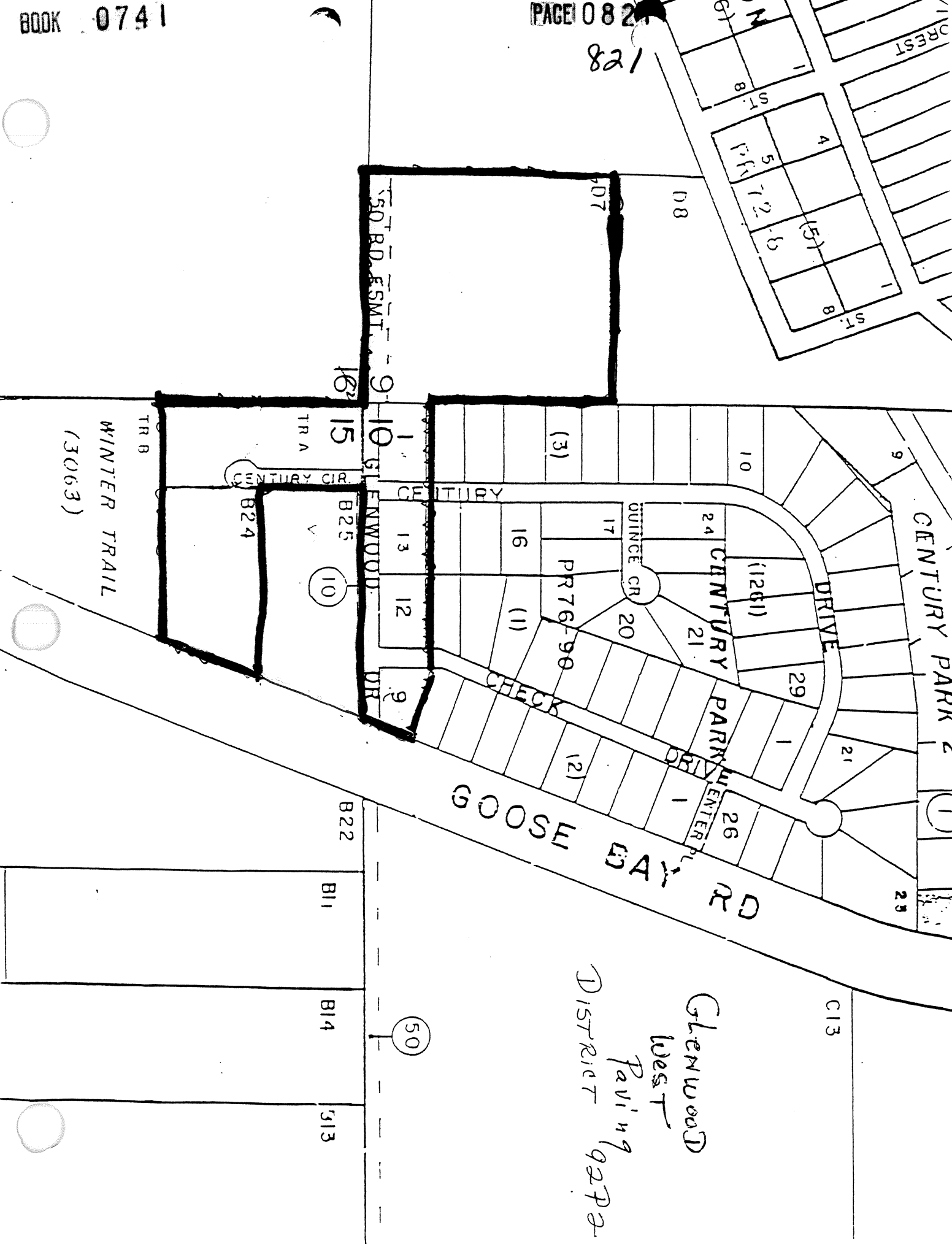
JOHN C. STEIN, Mayor

ATTEST


ERLING P. NELSON, CMC
City Clerk

(SEAL)


821



Glenwood
West
Paving
9272-
DISTRICT


CITY OF WASILLA
 ASSESSMENT ROLL
 GLENWOOD AVE PAVING LID #92P2


MSB TAX NO.	LOT	BLK	OWNER	TOTAL ASSESSMENT
CENTURY PARK	PLAT #76-105			
1261B01L012	12	1	MARTIN, LARON P. & M.	\$1,808.30
1261B01L013	13	1	MAT-SU CONSTRUCTION TRADES	\$1,808.30
1261B02L009	9	2	COLLINS, GEORGE B & J.M.	\$1,808.30
1261B03L001	1	3	SUTHERLIN, ROBERT R.H.	\$1,808.30
WINTER TRAIL	PLAT #85-94			
3063000T00A			WASILLA ASSOCIATES	\$1,808.30
MISC. TRACTS			(SEE DETAIL DESCRIPTION ON ATTACHMENT "A")	
17N01W09D007			AK. DIST. COUNCIL OF ASSEMBLIES OF GOD	\$1,808.30
17N01W15B024			CITY OF WASILLA	\$1,808.30

				\$12,658.10

(A \$2.00 ADMINISTRATIVE FEE IS TO BE ADDED TO EACH ASSESSMENT PAYMENT AT THE TIME OF EACH BILLING PER CITY OF WASILLA RESOLUTION NO. WR86-09)

WE, THE MAYOR AND CITY CLERK OF THE CITY OF WASILLA, ALASKA HERBY CERTIFY THAT THIS IS THE CONFIRMED ASSESSMENT ROLL FOR PAVING IMPROVEMENT DISTRICT #92P2. ALL CORRECTIONS AS DIRECTED BY THE CITY COUNCIL HAVE BEEN MADE. THE WASILLA CITY COUNCIL CONFIRMED THIS ASSESSMENT ROLL IN RESOLUTION NO. WR93-45.


 JOHN C. STEIN, MAYOR


 ERLING P. NELSON, CMC
 CITY CLERK

CITY OF WASILLA
ASSESSMENT ROLL
GLENWOOD AVENUE PAVING LID #92P2
ATTACHMENT "A"

Assembly of God Parcel

The South 710.00 feet of the East 670.00 feet of U.S. Government Lot 8, Section 9, Township 17 North, Range 1 West, Seward Meridian, Alaska. Containing 10.921 Acres, more or less. EXCEPT a 50 foot road easement along the South boundary of said tract along the section line between Sections 9 and 16 is reserved to the Grantors and also subject to 10 foot power easement granted to Matanuska Electric Association. (Tax Account #D7)

Senior Center

A tract of land located in the Northwest one-quarter, Northwest one-quarter Section 15, Township 17 North, Range 1 West, Seward Meridian; and more particularly described as follows:

Beginning at the Northwest corner of Section 15, marked by a General Land office Brass Cap Monument; thence North 89°53'00" East along the Section line between Section 15 and Section 10, a distance of 275.00 feet to the true Point of Beginning; thence South 00°07'00" East a distance of 280.04 feet thence North 89°53'00" East a distance of 513.78 feet to the West right-of-way of the Knik Road; thence North 20°54'00" East, along the right-of-way to the Section line, a distance of 300 feet; thence South 89°53'00" West, along the Section line, a distance of 621.37 feet to the true Point of Beginning, located in the Palmer Recording District, Third Judicial District, State of Alaska. Said land is also shown as Tract 2 on Boundary Survey Map filed July 21, 1981, as Plat 81-107. (Tax Account #B024)

93-016747
35-

PALMER REC. DISTRICT
REQUESTED BY _____

'93 NOV 16 PM 3 36

RETURN TO
CITY OF WASILLA
290 E. Heming Avenue
Wasilla, AK 99654