



CITY OF WASILLA

290 E. HERNING AVE.
WASILLA, ALASKA 99654-7091
PHONE: (907) 373-9050
FAX: (907) 373-9085

REQUESTED BY: Finance Director
PREPARED BY: Municipal Services

RESOLUTION NO. WR93-44

A RESOLUTION OF THE CITY OF WASILLA, ALASKA CONFIRMING THE SPECIAL ASSESSMENT ROLL OF NAOMI AVENUE PAVING ASSESSMENT DISTRICT 92P1 AND PROVIDING FOR THE LEVY AND PAYMENT OF THE ASSESSMENT.

WHEREAS, pursuant to Resolution No. WR92-32, the City of Wasilla, Alaska (the "City"), created Naomi Avenue Paving Assessment District No. 92P1, provided a method of assessment on property benefitted within Naomi Avenue Paving Assessment District No. 92P1, and provided for the levying of an assessment thereon; and

WHEREAS, pursuant to Resolution No. WR92-32, the City Council of the City of Wasilla directed the Finance Director to keep an account of all expenses of the improvement and provided for the assessment of the costs of the assessment; and

WHEREAS, an accounting of all expenses of the improvement have been made, the Special Assessment Roll for Naomi Avenue Paving Assessment District No. 92P1 has been prepared and notice of hearing on the Special Assessment Roll was regularly given in accordance with the City of Wasilla Title 2.60; and

WHEREAS, a public hearing on the Special Assessment Roll was held on November 8, 1993 and all corrections found necessary to the Special Assessment Roll have been made;

NOW THEREFORE BE IT RESOLVED, by the City Council that the Special Assessment Roll of Naomi Avenue Paving Assessment District No. 92P1 as prepared by the Finance Director is hereby confirmed;

BE IT FURTHER RESOLVED, that by virtue of the confirmation of the assessment roll, the assessments as set forth therein together with the aforementioned modifications, if any, are hereby declared to be payable and are a first lien prior and paramount to all liens except for real property taxes and collectible as such in accordance with AS 29.46 and CW 2.60.

The amounts assessed against each parcel of property as set forth in the assessment roll shall be paid as follows:

1. The assessment may be paid in one lump sum on or before December 8, 1993 without penalty or interest.
2. If the assessment is not prepaid as provided in Item 1 above, the assessment may be paid in ten (10) equal yearly installments, plus interest at the rate of interest payable on the bonds issued to finance the

RESOLUTION NO. WR93-44
PAGE 2

improvements to Naomi Avenue Paving Assessment District No. 92P1, the first such installment to be due and payable on or before September 8, 1994, and each installment thereafter shall be due and payable on or before September 8 of each year and ending on September 8, 2003.

3. Installment payments will bear interest at a rate of interest payable on the bonds issued to finance the improvements to Naomi Avenue Paving Assessment District No. 92P1, payable on the balance of all installments due and such interest on the balance of the assessment due shall commence September 9, 1993.

4. Delinquent dates shall be the day following the due dates noted in Item 2 above.

5. A penalty of eight percent (8%) shall be added to any assessment installment not paid before the date of delinquency. An additional penalty of eight percent (8%) shall be added on each anniversary of the date of delinquency that said assessment installment remains unpaid. Both the assessment installment and penalty shall draw interest at a rate three percent (3%) per annum higher than the rate payable on bonds issued to finance the improvements within the special assessment district until paid.

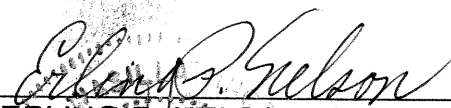
BE IT FURTHER RESOLVED, that the Special Assessment Roll as presented by the Finance Director, and reviewed and corrected where necessary, is hereby certified as the final and official assessment roll for Naomi Avenue Paving Assessment District No. 92P1.

I certify that a resolution in substantially the above form was passed by a majority of those voting at a duly called and conducted meeting of the governing body of the City of Wasilla this 8 day of November, 1993.

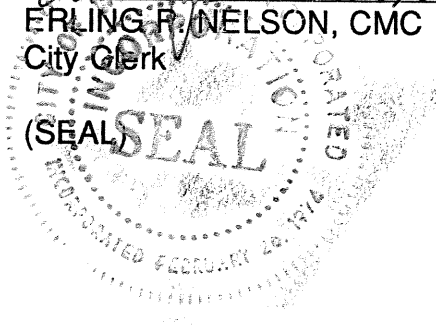


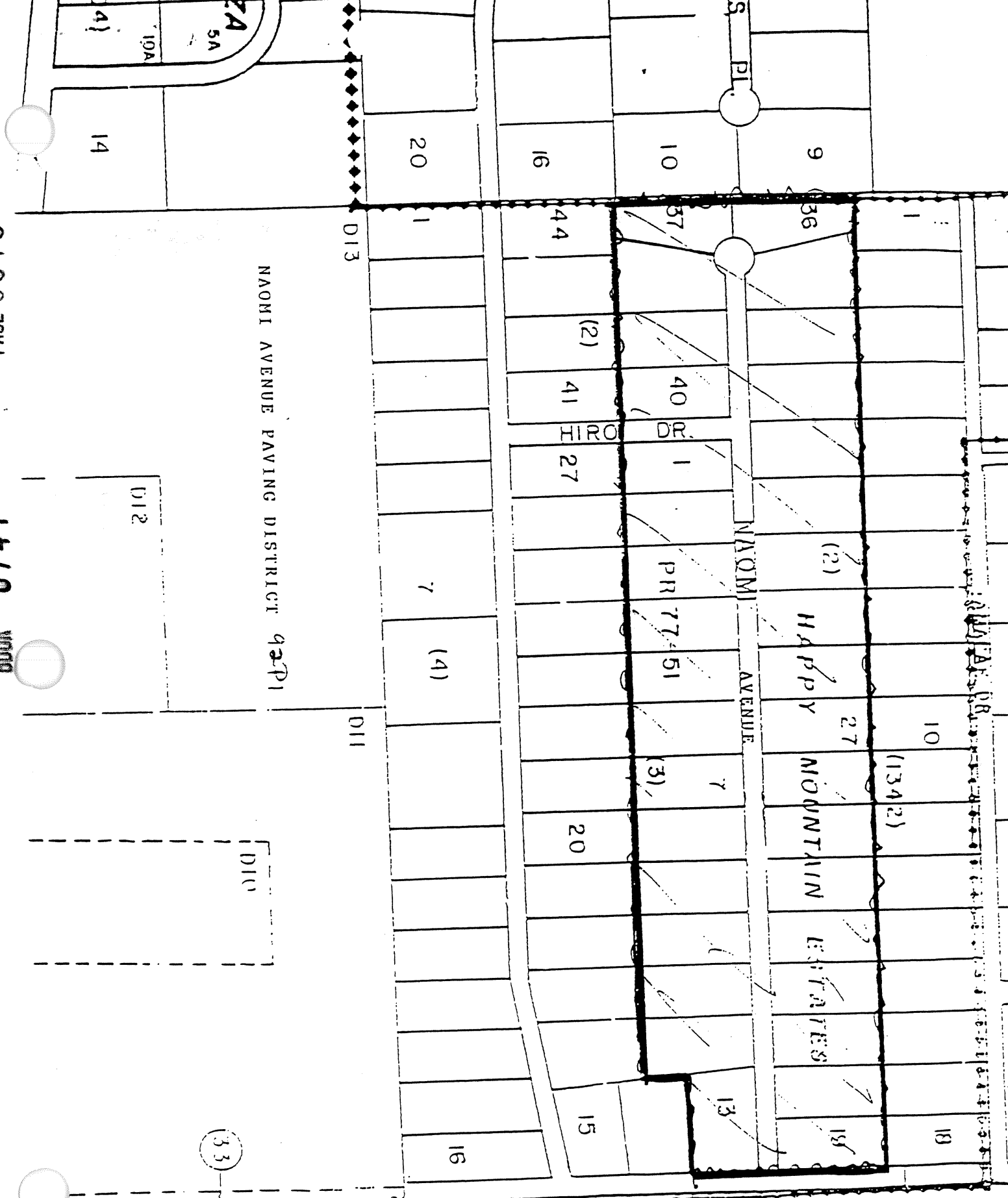
JOHN C. STEIN, Mayor

ATTEST:



ERLING P. NELSON, CMC
City Clerk





(KEY INDE

MSB TAX NO. LOT BLK PLAT #77-107 OWNER TOTAL ASSESSMENT

MSB TAX NO.	LOT	BLK	PLAT #77-107	OWNER	TOTAL ASSESSMENT
1342B02L019	19	2		IMLACH, WM. E. & CAROL	\$1,661.00
1342B02L020	20	2		IMLACH, WM. E. & CAROL	\$1,661.00
1342B02L021	21	2		NOWAG, DONALD & CARLA	\$1,661.00
1342B02L022	22	2		JOINETTE, NANCY A.	\$1,661.00
1342B02L023	23	2		LARSON, WANDA	\$1,661.00
1342B02L024	24	2		KANIA, LEON W. & P. SCOTTIE	\$1,661.00
1342B03L025	25	2		JAMES, JAY & MARION E.	\$1,661.00
1342B02L026	26	2		JENSEN, THOMAS & KAREN	\$1,661.00
1342B02L027	27	2		REYNOLDS, KRISTEN K.	\$1,661.00
1342B02L028	28	2		HEIKES, DONALD & ANGELA	\$1,661.00
1342B02L029	29	2		OTTO, RAYMOND & RUBY	\$1,661.00
1342B02L030	30	2		COBER CHARLES, JAY DAVIS COBER, JERI	\$1,661.00
1342B02L031	31	2		MEDAUGH, MICHAEL & C.M.	\$1,661.00
1342B02L032	32	2		KILLION, GERALD R. & JUDITH	\$1,661.00
1342B02L033	33	2		WIMMER, WILLIAN & JANET	\$1,661.00
1342B02L034	34	2		CHAPPEL, DAVID & SANDRA	\$1,661.00
1342B02L035	35	2		DEEDY, DANIAL	\$1,661.00
1342B02L036	36	2		LAJCSAK, PATRICIA J.	\$1,661.00
1342B02L037	37	2		SCHWADERER, FREDERICK & L.	\$1,661.00
1342B02L038	38	2		LEE, LESLIE & CYNTHIA	\$1,661.00
1342B02L039	39	2		HEISERMAN, TERRELL	\$1,661.00
1342B02L040	40	2		HILTY, LELAND & R.A.	\$1,661.00
1342B03L001	1	3		AIKEN, LEWIS & MARIE	\$1,661.00
1342B03L002	2	3		DYE, KRISTJAN & GAIL	\$1,661.00
1342B03L003	3	3		DEHART, STEVEN C & CONNIE L.	\$1,661.00
1342B03L004	4	3		SEITZ, SAMUEL E & PHYLLIS L	\$1,661.00
1342B03L005	5	3		MARKUS, NICHOLAS T. & L.S.	\$1,661.00
1342B03L006	6	3		MURPHY, JOHN & ARLENE	\$1,661.00
1342B03L007	7	3		PALIN, JAMES & FAYE	\$1,661.00
1342B03L008	8	3		DIATRIS COMPANY	\$1,661.00
1342B03L009	9	3		ROBERTS, RAYMOND & C.M.	\$1,661.00
1342B03L010	10	3		ADAMS, TIMOTHY P.	\$1,661.00
1342B03L011	11	3		KAWABE, ALBERT & EIKO	\$1,661.00
1342B03L012	12	3		KAWABE, ALBERT & EIKO	\$1,661.00
1342B03L013	13	3		BEUTLER, CLYDE & JANET	\$1,661.00

 \$58,135.00

(A \$2.00 ADMINISTRATIVE FEE IS TO BE ADDED TO EACH INDIVIDUAL ASSESSMENT PAYMENT AT THE TIME OF EACH BILLING PER CITY OF WASILLA RESOLUTION WR86-09)

WE, THE MAYOR AND CITY CLERK OF THE CITY OF WASILLA, ALASKA HEREBY CERTIFY THAT THIS IS THE CONFIRMED ASSESSMENT ROLL FOR PAVING ASSESSMENT DISTRICT 92P1. ALL CORRECTIONS AS DIRECTED BY THE CITY COUNCIL HAVE BEEN MADE. THE WASILLA CITY COUNCIL CONFIRMED THIS ASSESSMENT ROLL IN RESOLUTION NO. WR93-44.



JOHN C. STEIN, MAYOR



ERLING P. NELSON, CMC
CITY CLERK

RETURN TO
CITY OF WASILLA
290 E. HANSEN
WASILLA, AK 99607

93-016746-135
PALMER REC. DISTRICT
REQUESTED BY _____
93 NOV 16 PM 3 36