



**CITY OF WASILLA**

290 E. HERNING AVE.  
WASILLA, ALASKA 99654-7091  
PHONE: (907) 373-9050  
FAX: (907) 373-9085

Requested by: Administration  
Prepared by: Administration

**RESOLUTION NO. WR93-42**

A RESOLUTION OF THE WASILLA CITY COUNCIL PERTAINING TO THE STATE OF ALASKA'S FY94 MUNICIPAL CAPITAL PROJECT MATCHING GRANT PROGRAM - AS 37.06.

WHEREAS, the City of Wasilla has been notified that the amount of \$159,843 has been appropriated by the State of Alaska for Wasilla's participation in the Municipal Capital Project Matching Grant Program - AS 37.06; and

WHEREAS, the City of Wasilla has identified the Peck Street Paving Project as the priority project for the matching grant program.


NOW THEREFORE BE IT RESOLVED that the Wasilla City Council declares that the Peck Street Paving Project is the City's priority project for the Municipal Capital Project Matching Grant Program and therefore requests the allocation of \$159,843 from the State of Alaska; and

BE IT FURTHER RESOLVED that the City of Wasilla will appropriate \$40,127 in matching funds for the Peck Street Paving Project.

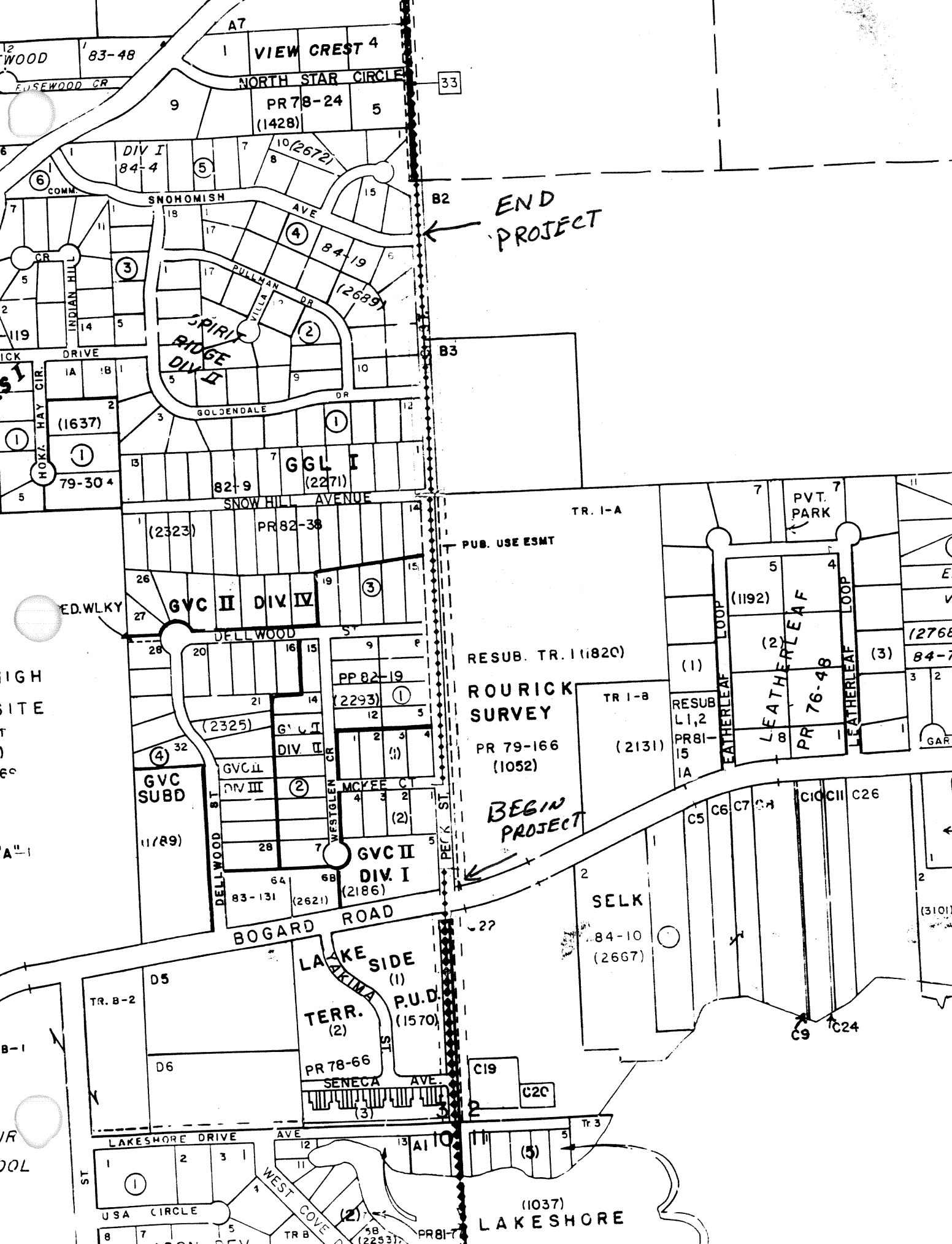
I certify that a resolution in substantially the above form was passed by a majority of those voting at a duly called and conducted meeting of the governing body of the City of Wasilla this 27th day of September, 1993.

  
\_\_\_\_\_  
John C. Stein, Mayor

ATTEST:

  
\_\_\_\_\_  
Erling P. Nelson, CMC  
City Clerk

(SEAL)



VIEW CREST 4

NORTH STAR CIRCLE

PR 78-24  
(1428)

DIV I  
84-4

SNOHOMISH AVE

SPIRIT RIDGE DIV I

SPIRIT RIDGE DIV II

GOLDENDALE DR

GGL I  
(2271)

82-9

SNOW HILL AVENUE

GVC II DIV IV

DELLWOOD ST

GVC SUBD  
(11789)

GVC II DIV III

GVC II DIV I  
(2186)

BOGARD ROAD

LAKE SIDE TERR.  
(1)  
(2)

PR 78-66  
SENECA AVE.

LAKESHORE DRIVE

USA CIRCLE

RESUB. TR. I (11820)

ROURICK SURVEY

PR 79-166  
(1052)

BEGIN PROJECT

SELK

84-10  
(2667)

LAKESHORE  
(11037)

END PROJECT

B2

B3

PUB. USE ESMT

TR. I-A

TR I-B

RESUB L1,2  
PR 81-15  
IA

LEATHERLEAF

PR 76-48

C9

C24

33

B2

B3

PUB. USE ESMT

TR I-B

27

C19

C20

13

11

5

PR 81-7

TR B

58

(22537)

PR 81-7

TR B

58

(22537)

PR 81-7

TR B

58

(22537)

PR 81-7

TR B

58

(22537)

PR 81-7

TR B

58

(22537)

PR 81-7

TR B

58

(22537)

PR 81-7

TR B

58

(22537)

PR 81-7

TR B

58

(22537)

PR 81-7

TR B

58

(22537)

PR 81-7

TR B

58

(22537)

PR 81-7

TR B

58

(22537)

PR 81-7

TR B

58

(22537)

PR 81-7

TR B

58

(22537)

PR 81-7

TR B

58

(22537)

PR 81-7

TR B

58

(22537)

PR 81-7

TR B

58

(22537)

PR 81-7

TR B

58

(22537)

PR 81-7

TR B

58

(22537)

PR 81-7

TR B

58

(22537)

PR 81-7

TR B

58

(22537)

PR 81-7

TR B

58

(22537)

PR 81-7

TR B

58

(22537)

PR 81-7

TR B

58

(22537)

PR 81-7

TR B

58

(22537)

PR 81-7

TR B

58

(22537)

PR 81-7

TR B

58

(22537)

PR 81-7

TR B

58

(22537)

PR 81-7

TR B

58

(22537)

PR 81-7

TR B

58

(22537)

PR 81-7

TR B

58

(22537)

PR 81-7

TR B

58

(22537)

PR 81-7

TR B

58

(22537)

PR 81-7

TR B

58

(22537)

PR 81-7

TR B

58

(22537)

PR 81-7

TR B

58

(22537)

PR 81-7

TR B

58

(22537)

PR 81-7

TR B

58

(22537)

PR 81-7

TR B

58

(22537)

PR 81-7

TR B

58

(22537)

PR 81-7

TR B

58

(22537)

PR 81-7

TR B

58

(22537)

PR 81-7

TR B

58

(22537)

PR 81-7

TR B

58

(22537)

PR 81-7

TR B

58

(22537)

PR 81-7

TR B

58

(22537)

PR 81-7

TR B

58

(22537)

PR 81-7

TR B

58

(22537)

PR 81-7

TR B

58

(22537)

PR 81-7

TR B

58

(22537)

PR 81-7

TR B

58

(22537)

PR 81-7

TR B

58

(22537)

PR 81-7

TR B

58

(22537)

PR 81-7

TR B

58

(22537)

PR 81-7

TR B

58

(22537)

PR 81-7

TR B

58

(22537)

PR 81-7

TR B

58

(22537)

PR 81-7

TR B

58

(22537)

PR 81-7

TR B

58

(22537)

PR 81-7

TR B

58

(22537)

PR 81-7

TR B

58

(22537)

PR 81-7

TR B

58

(22537)

PR 81-7

TR B

58

(22537)

PR 81-7

TR B

58

(22537)

PR 81-7

TR B

58

(22537)

PROJECT DESCRIPTION

(Copy For Each Project)

For each capital project listed on "Form A" from this packet, please provide in writing the information indicated on the form below. You may use the form, or attach separate pages. The information must be clearly labelled as shown below:

1. PROJECT NAME Peck Street Paving

Provide the name of the project, as it appears on "Form A". (Please be sure to provide a name for each project which indicates specifically what the project is. For example, do not simply list a project as "road improvements". Instead, list it as "road resurfacing for miles 1-10 of Sawmill Creek Road", or whatever is appropriate. When in doubt, please be more specific rather than less specific. Following this approach will greatly expedite review and approval of the project.)

Strip pave approximately 2,600 lineal feet of Peck Street, a highly traveled gravel collector road. Paving will be 24' wide including 4' for pedestrian traffic and a left turn lane at Bogard Road. Financing City share will include a local improvement district

2. PROJECT DESCRIPTION

Describe the essential characteristics of the project, including its purposes, stages, estimated duration, financing, and estimated time required for completion.

3. LOCAL SHARE Local share will be from a Local Improvement District and as necessary, augmented from City general funds to be appropriated by City Council.

Identify and explain the sources for the required local share (e.g., local cash, funding from other non-state sources, in-kind contributions allowable under AS 37.06, etc.).

NOTE: Please be as specific and informative as possible. Complete proposals will result in timely approval. If important details are omitted, follow-up requests for information will delay approval.

If you have questions either about what information to include, or how much information to include, please call Jack Fargnoli at OMB in Juneau at 465-3568 for assistance.

MUNICIPAL CAPITAL PROJECT MATCHING GRANT PROGRAM  
 FY 94 LIST OF PROPOSED PROJECTS

FY 94

MUNICIPALITY: City of Wasilla  
 ADDRESS: 290 E. Herning Avenue, Wasilla, Alaska 99654 FAX: 373-9085  
 GRANT ADMINISTRATOR: John C. Stein, Mayor TELEPHONE: 373-9055 PAGE 1 OF 1

PRIORITY NUMBER	PROJECT	STATE SHARE	LOCAL SHARE	PROJECT TOTAL	LEGISLATIVE SIGNATURES	HOUSE DISTRICT
1	Peck Street Paving	\$159,843	\$40,000	\$199,970		26
2						
3						
4						
5						
6						
7						
8						
9						
10						
<b>COLUMN TOTALS</b>						

OMB RECOMMENDATION: \_\_\_\_\_ DATE FILES TRANSFERRED TO DOA: \_\_\_\_\_