

Presented by Ord 98-35
8/10/98 W.

WASILLA CITY COUNCIL INFORMATION MEMORANDUM

IM 98-77

SUBJECT: BUDGET REVISION FOR ACCEPTANCE OF LAND

REQUESTED BY: MAYOR

PREPARED BY: FINANCE

DATE: July 21, 1998

FOR AGENDA OF: July 27, 1998

SUMMARY:

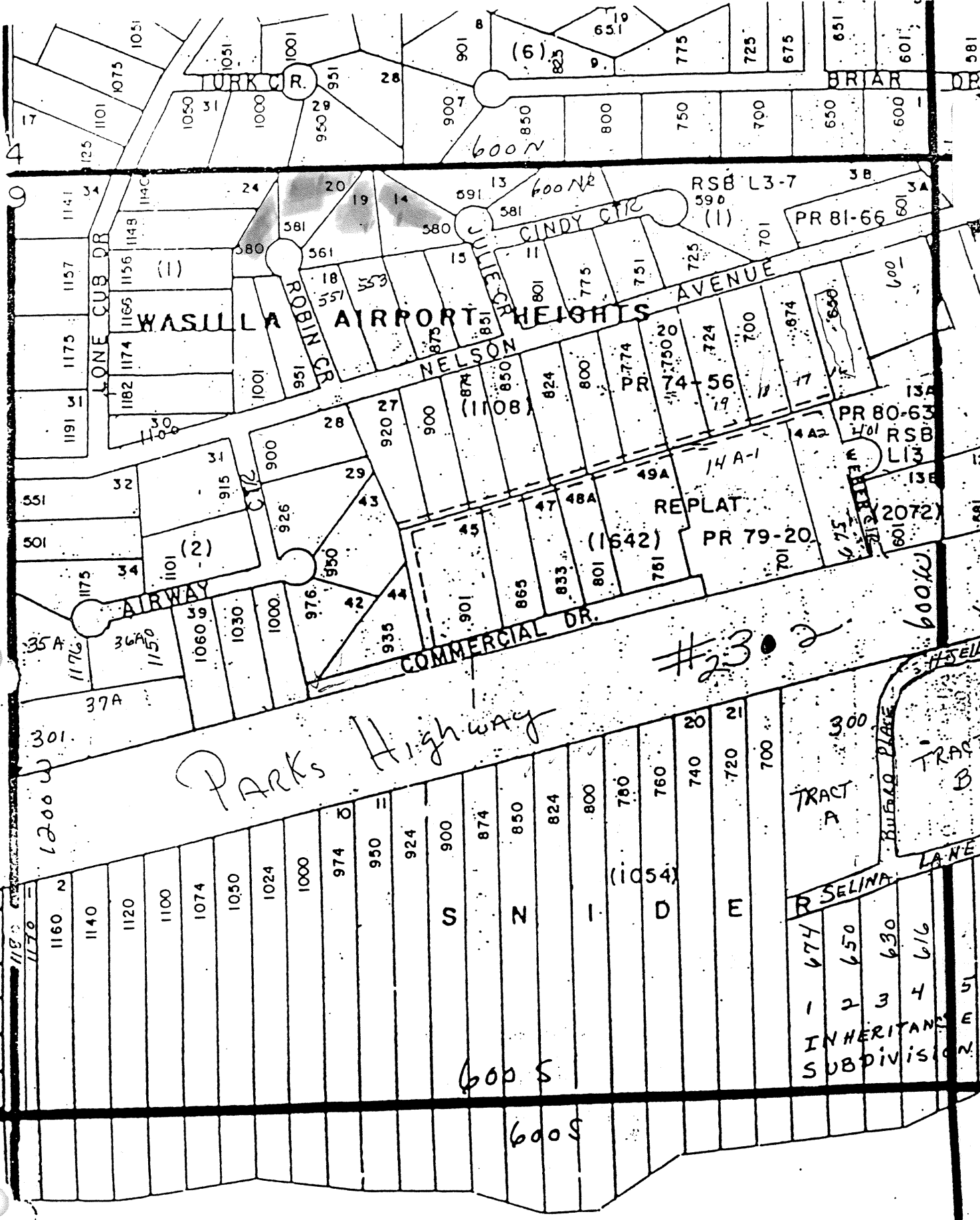
Ordinance 98-35 gives the mayor the authority to accept a donation of land, and pay the delinquent assessments. The current property owner is not going to pay the assessments. The most inexpensive way for the City of Wasilla to accept title to the property is to pay the assessments at this time. We have pulled these lots from the foreclosure process to save any further expense to the City of Wasilla.

FISCAL IMPACT: ___No ___X_Yes, amount requested: \$ 19,000 Fund: General___

RECOMMENDED ACTION: Introduction of Ordinance Serial No. 98-35.

MAYOR REVIEW/COMMENT:


Reviewed by: SARAH PALIN, Mayor



Park Highway

WASULA AIRPORT HEIGHTS AVENUE

COMMERCIAL DR.

AIRWAY

CINDY CR

ROBIN CR

LONE CUB DR

#3

TRACT A

TRACT B

INHERITANCE SUBDIVISION

600 S

600 S

S I D E

R SELINA LANE

BULLARD PLACE

LANE

RSB L3-7

PR 80-63

PR 79-20

PR 81-66

(1108)

(1642)

(1054)

(6)

(1)

(1)

(2)

RSB L13

2072

300

674

650

630

616

5

E

N

651

38

135

138

601

601

700

720

740

760

780

800

824

850

874

900

924

950

974

1000

1024

1050

1074

1100

1120

1140

1160

1170

1180

1190

1200

1200 W

301

37A

36A

35A

501

551

1191

1175

1157

1141

1143

1148

1155

1165

1174

1182

1191

1199

1100

1101

1101

1101

1101

1101

1101

1101

1101

1101

1101

1101

1101

1101

1101

1101

1101

1101

1101

1101

1101

1101

1101

1101

1101

1101

1101

1101

1101

1101

1101

1101

1101

1101

1101

1101

1101

1101

1101

1101

1101

1101

1101

1101

1101

1101

1101

1101

1101

1101

1101

1101

1101

1101

1101

1101

1101

1101

1101

1101

1101

1101

1101

1101

1101

1101

1101

1101

1101

1101

1101

1101

1101

1101

1101

1101

1101

1101

1101

1101

1101

1101

1101

1101

1101

1101

1101

1101

1101

1101

1101

1101