



## CITY OF WASILLA

290 E. HERNING AVE.  
WASILLA, ALASKA 99687  
PHONE: (907) 373-9050  
FAX: (907) 373-0788

### COUNCIL MEMORANDUM NO. 90-35

FROM: Mayor Stein

DATE: April 30, 1990

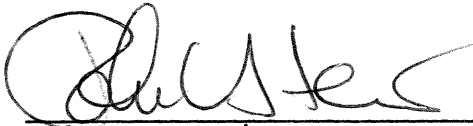
SUBJECT: 1987 Matanuska-Susitna Borough Foreclosure Process

On the wall is a City map with all of the parcels involved in the 1987 Matanuska-Susitna Borough foreclosure process for unpaid 1986 taxes highlighted. Attached to this memorandum is a list of parcels on the list which also are within Assessment areas. If the Matanuska-Susitna Borough were to foreclose on these properties the City could lose the balance of the assessments, at this time that number is \$9,758.26.

The City Administration is interested in paying taxes on Parcel #1 and 26 as potential sites for a Public Works Facility.

The Matanuska-Susitna Borough has asked that we make known our intentions by May 31st.

Recommendation: To approve payment of taxes on Tax Parcels #17N01W04A005 and #2602000T00A in the amount of \$8,296.18 funding to come from Council Contingency #411.2701. The unobligated balance in this account as of April 27, 1990 is \$13,533.00.

  
\_\_\_\_\_  
John C. Stein, Mayor

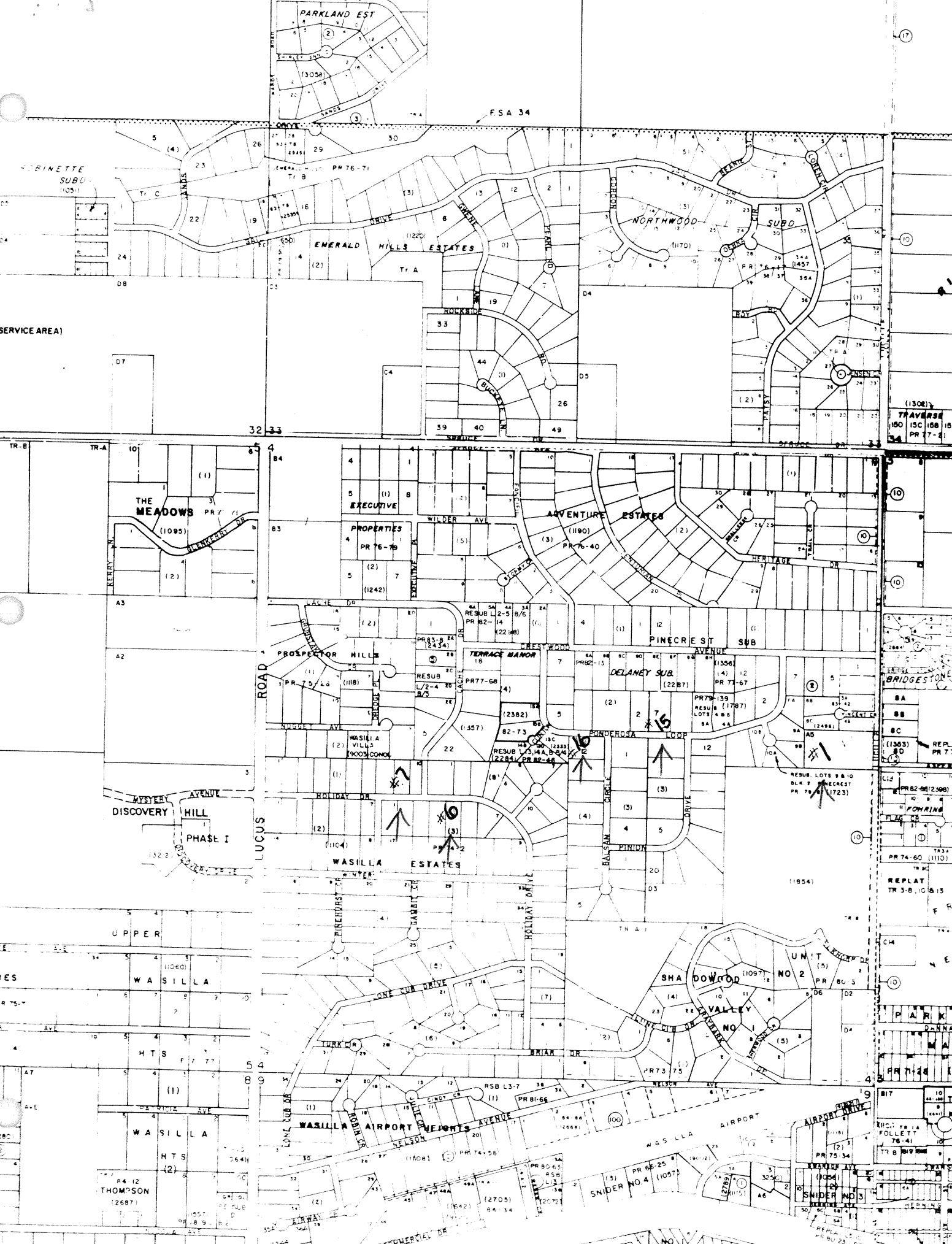
JCS:EPN/mdh

*Approved City Paying  
Taxes on properties with  
Special assessments.  
5/14/90*

PARCELS INCLUDED IN THE BOROUGH 1987 FORECLOSURE PROCESS FOR 1986 TAXES  
 THAT ARE WITHIN CITY OF WASILLA ASSESSMENT DISTRICTS

ASSESSMENT DISTRICT

PROPERTY DESCRIPTION	78-1 WATER		83-9-1 SEWER		PHASE I PAVING		TOTALS
10158ZEL009	PRINC. BAL.	\$934.87	PRINC. BAL.	\$372.52	PRINC. BAL.	\$1,397.90	\$2,705.29
	INT. DUE.	\$98.10	INT. DUE	\$69.27	INT. DUE	\$170.34	\$337.71
EAST WASILLA TOWNSITE	PEN. & FORE.	\$4.28	PEN. & FORE.	\$79.34	PEN. & FORE.	\$14.92	\$98.54
	ADMIN. FEE	\$1.00	ADMIN. FEE	\$2.00	ADMIN. FEE	\$2.00	\$4.00
TOTAL		\$1,037.25		\$523.13		\$1,585.16	\$3,145.54
10168ZEL010	PRINC. BAL.	\$934.87	PRINC. BAL	\$372.52	PRINC. BAL	\$1,999.05	\$3,706.44
EAST WASILLA TOWNSITE	INT. DUE	\$98.10	INT. DUE	\$69.27	INT. DUE	\$243.59	\$410.96
	PEN. & FORE.	\$4.28	PEN & FORE	\$79.34	PEN. & FORE.	\$21.32	\$104.94
	ADMIN. FEE	\$1.00	ADMIN. FEE	\$2.00	ADMIN. FEE	\$2.00	\$4.00
		\$1,037.25		\$523.13		\$2,265.96	\$3,826.34
2333B03L020	PRINC. BAL.	\$2,641.63	PRINC. BAL.	\$1.00	PRINC. BAL.	\$1.00	\$2,641.63
GVC II	INT. DUE.	\$138.66	INT. DUE	\$1.00	INT. DUE	\$1.00	\$138.66
	PEN. & FORE.	\$6.09	PEN. & FORE.	\$1.00	PEN. & FORE.	\$1.00	\$6.09
	ADMIN. FEE	\$1.00	ADMIN. FEE	\$1.00	ADMIN. FEE	\$1.00	\$1.00
		\$2,786.38		\$4.00		\$4.00	\$2,786.38
TOTALS		\$4,860.88		\$1,046.26		\$3,851.12	\$9,758.26



FSA 34

SIBINETTE  
SUBD  
(1051)

SERVICE AREA)

(1302)  
TRAVERSE  
150 15C 15B 15  
PR 7-41

THE MEADOWS  
(1095)

EXECUTIVE  
PROPERTIES  
PR 76-79

ADVENTURE ESTATES  
(1190)

PROSPECTOR HILLS  
PR 73-69

TERRACE MANOR  
RESUB L2-5 8/6  
PR 82-14

PINECREST SUB  
DELANEY SUB  
(2287)

DISCOVERY HILL  
PHASE I  
(104)

WASILLA ESTATES  
(104)

UPPER  
WASILLA  
(1060)

HTS  
WASILLA  
(1)

WASILLA  
HTS  
(2)

R4 12  
THOMPSON  
(2687)

WASILLA AIRPORT  
REYNOLDS AVENUE

WASILLA AIRPORT

WASILLA AIRPORT

SNIDER NO 4  
(1057)

SNIDER NO 3  
(1054)

BRIDGESTONE  
BA  
BB  
BC  
BD  
BE  
BF  
BG  
BH  
BI  
BJ  
BK  
BL  
BM  
BN  
BO  
BP  
BQ  
BR  
BS  
BT  
BU  
BV  
BW  
BX  
BY  
BZ  
C1  
C2  
C3  
C4  
C5  
C6  
C7  
C8  
C9  
CA  
CB  
CC  
CD  
CE  
CF  
CG  
CH  
CI  
CJ  
CK  
CL  
CM  
CN  
CO  
CP  
CQ  
CR  
CS  
CT  
CU  
CV  
CW  
CX  
CY  
CZ

POWING  
BLOCK 16

REPLAY  
TR 3-B, 10 & 13

PARK  
DANNA  
PR 74-46

WASILLA  
PR 75-34

WASILLA  
PR 75-34

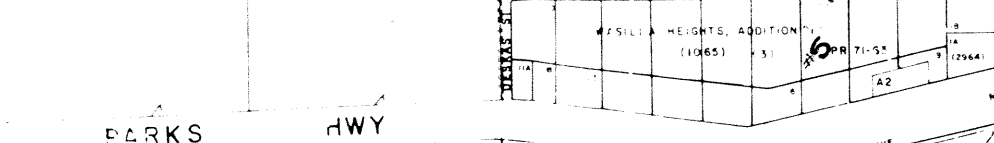
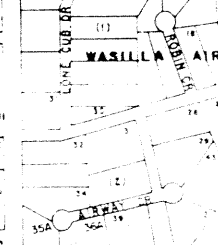
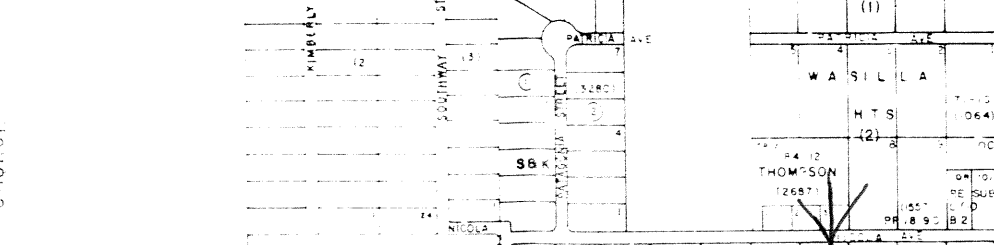
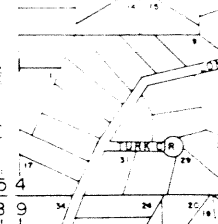
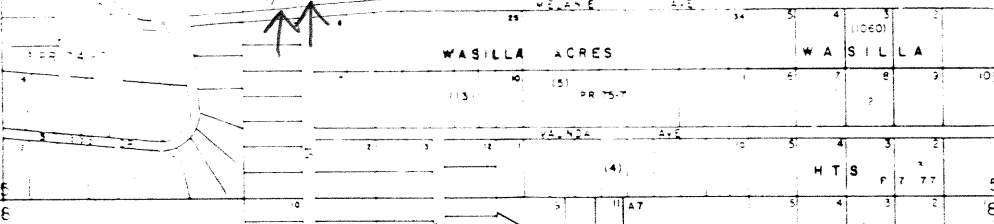
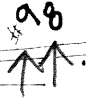
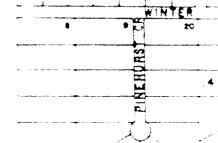
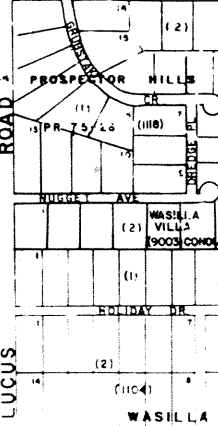
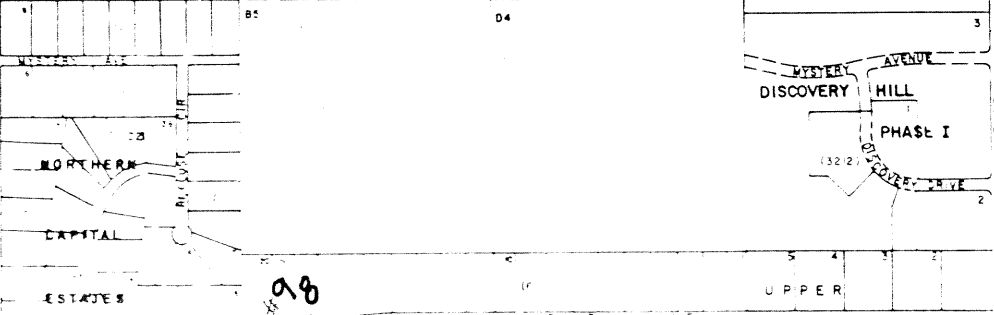
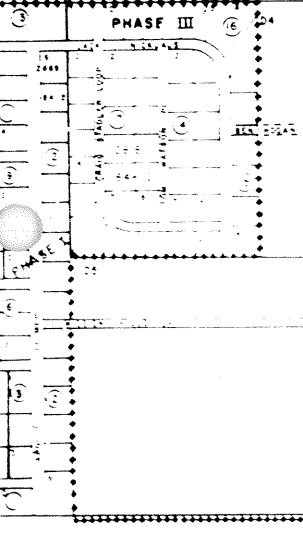
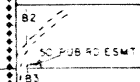
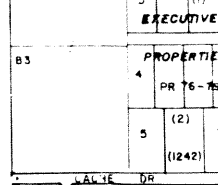
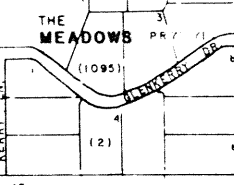
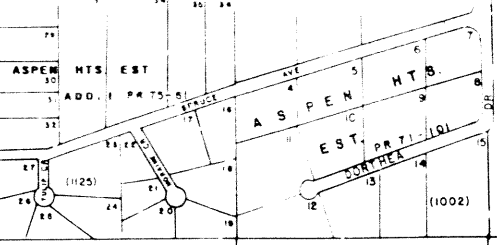
F.S.A. I  
(FIRE SERVICE AREA)

CHURCH

PHASE I

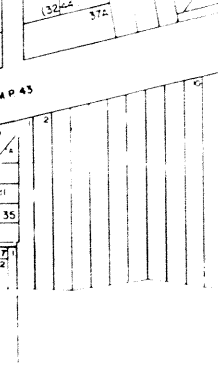
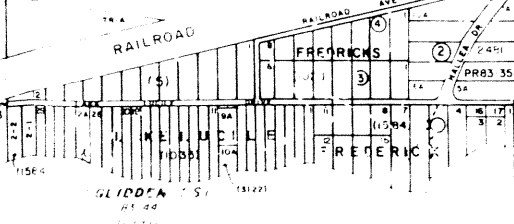
FSA 34

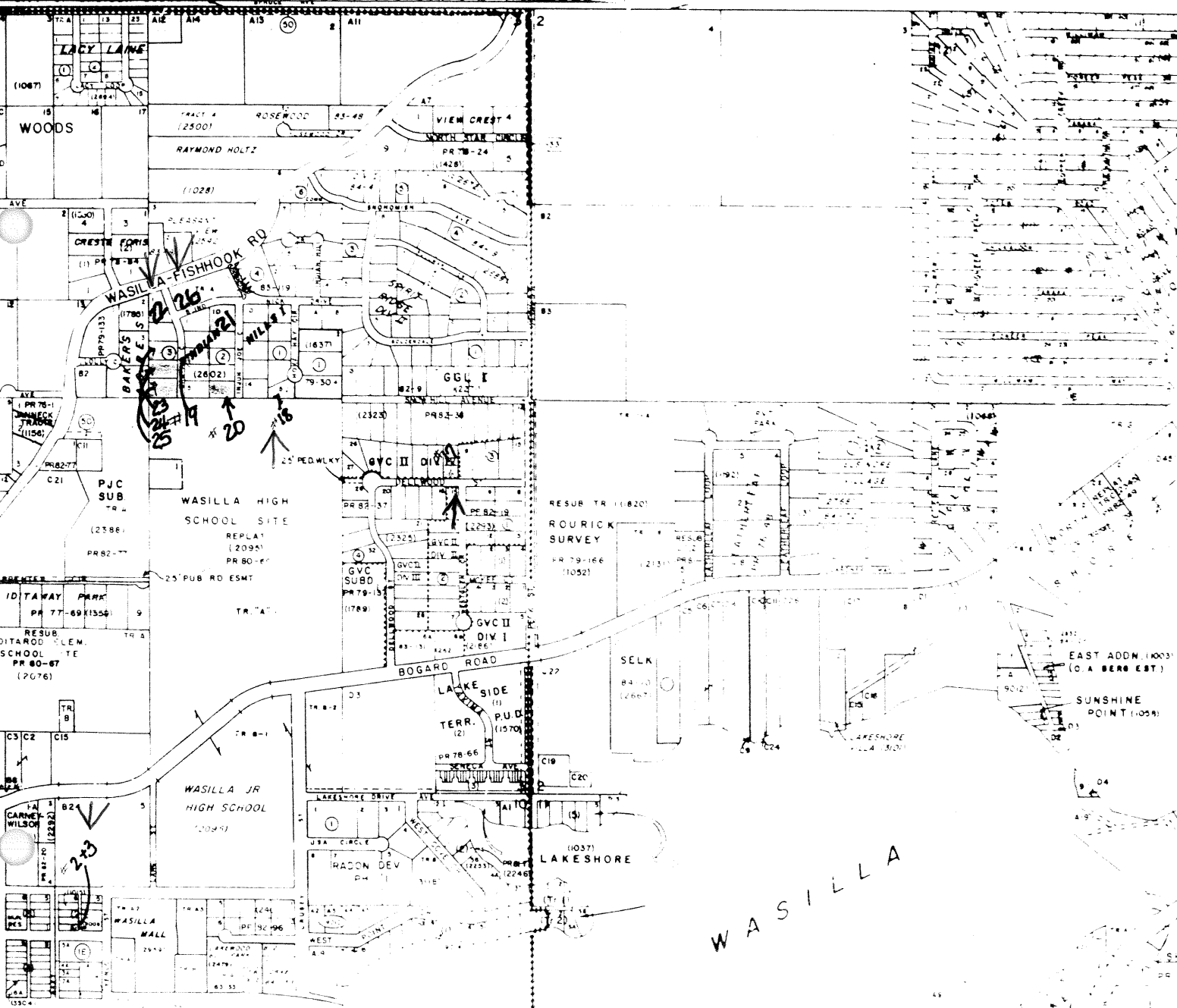
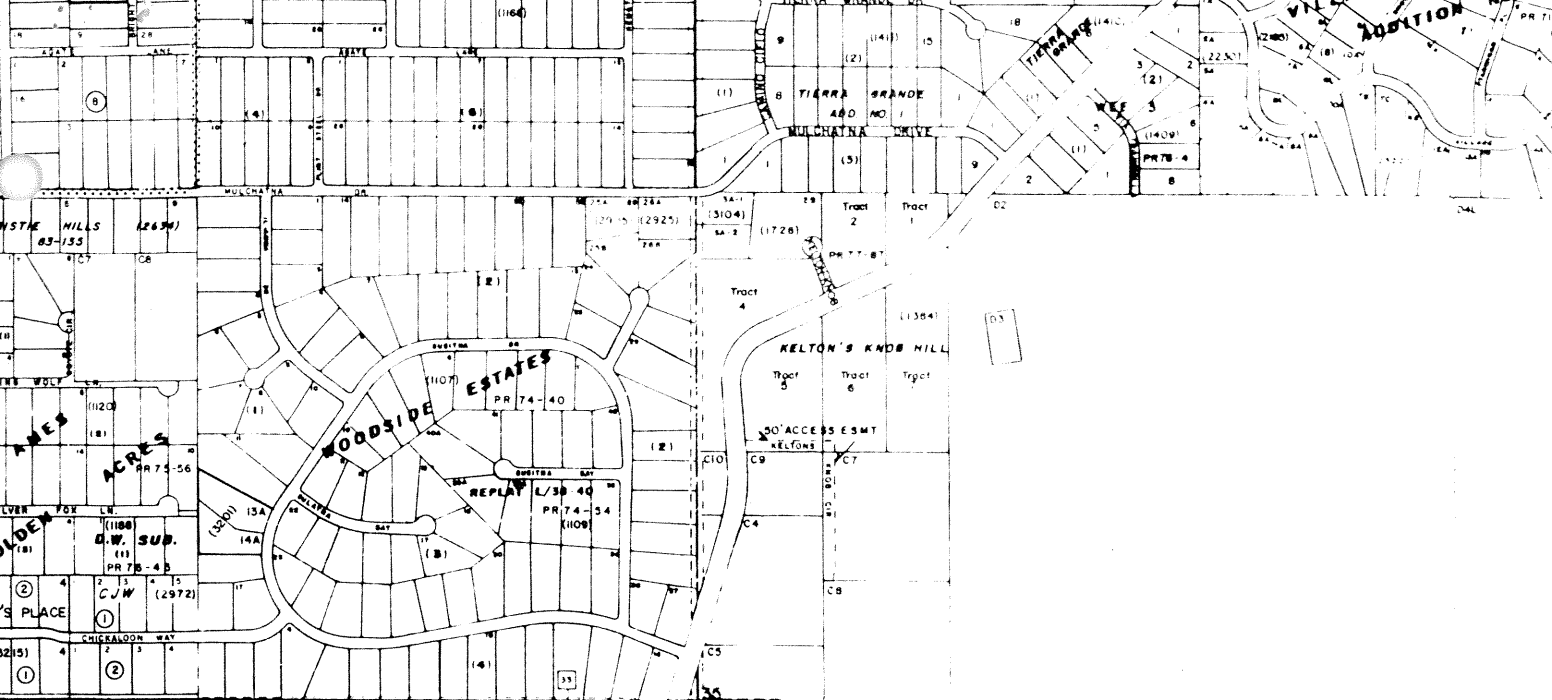
32 33

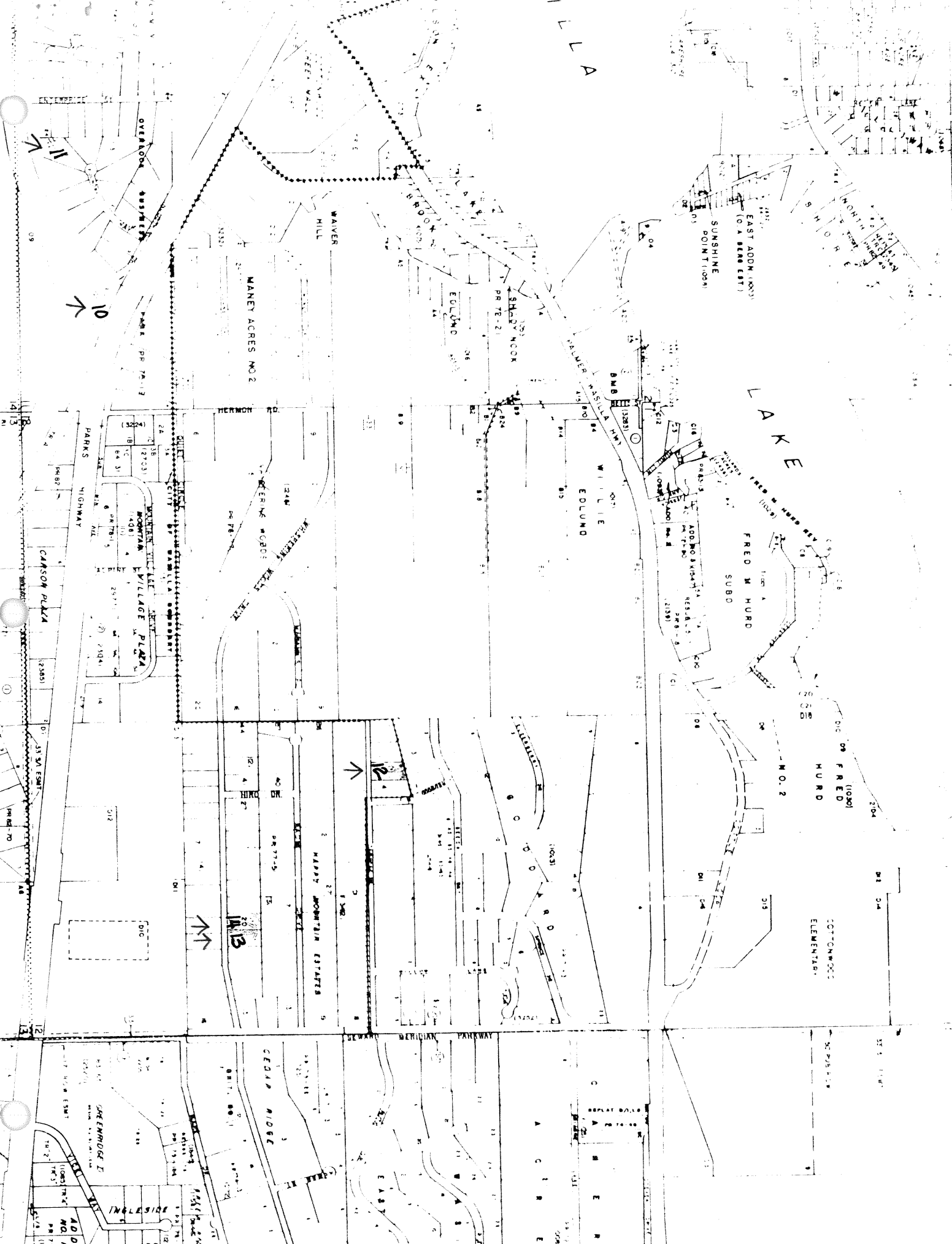


PARKS HWY

ALASKA







OVERLOOK

11

10

WAYER HILL

MANET ACRES NO. 2

EOLUND

SHADY NOOK

SUNSHINE

EAST ADDITION (O.A. BEBE EST.)

LAKE

WILLIE EOLUND

FRED W HURD SUBD

PARKS HIGHWAY  
CANSON PLAZA  
MOUNTAIN VILLAGE DRIVE  
PARKS HIGHWAY

MERRYMAN

12

MADY MOUNTAIN ESTATES

MO. 2

FRED HURD (1030)

13

14

COTTONWOOD ELEMENTARY

GREENROSE II  
INGLESIDE  
ADD NOL

BERKMAN PARKWAY

COTTONWOOD