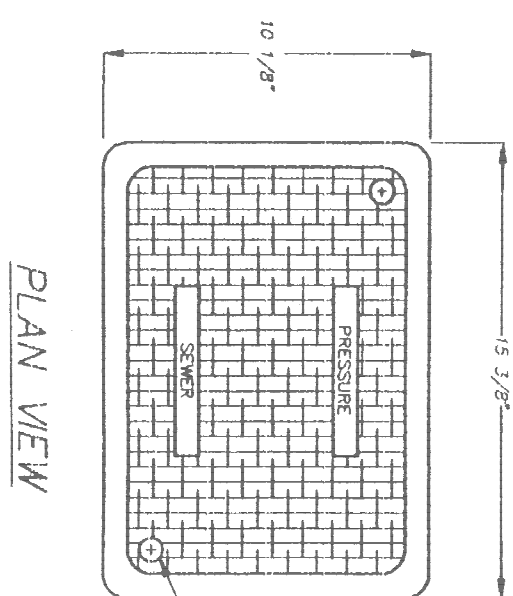
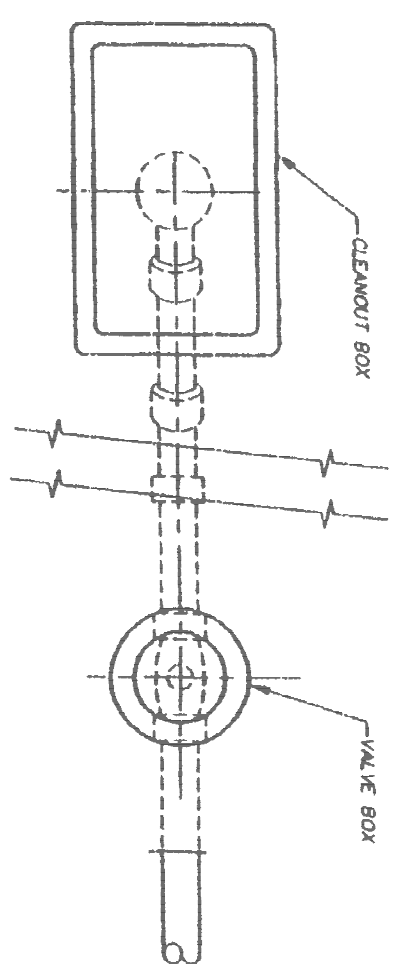
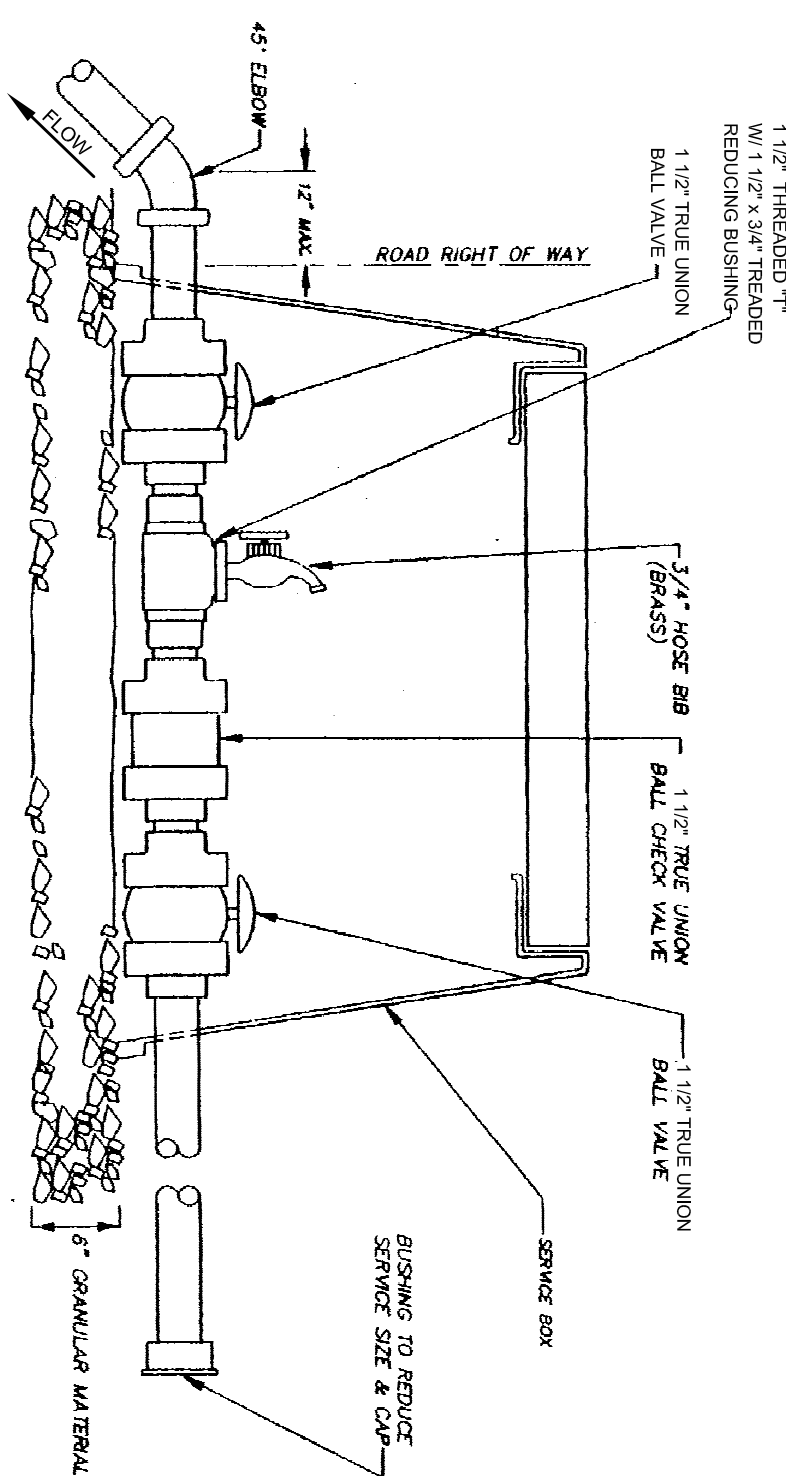
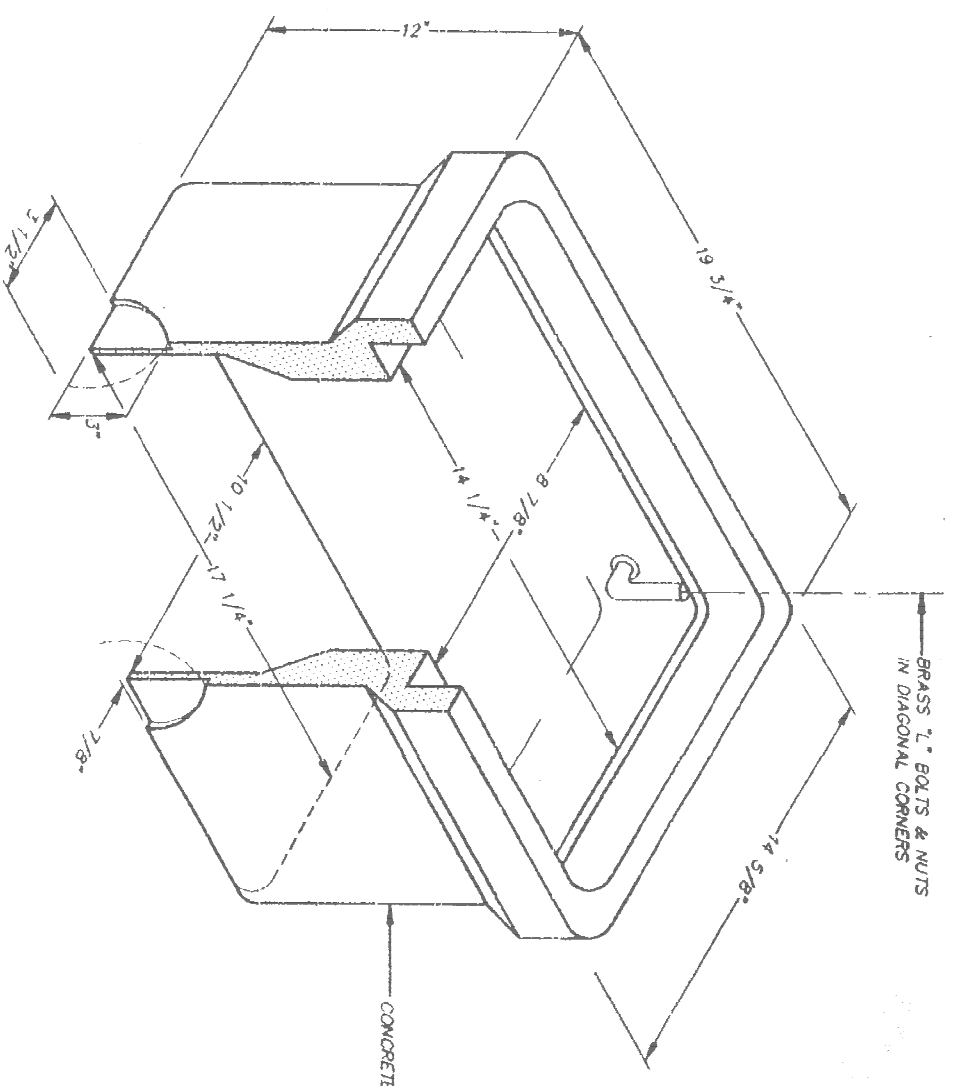
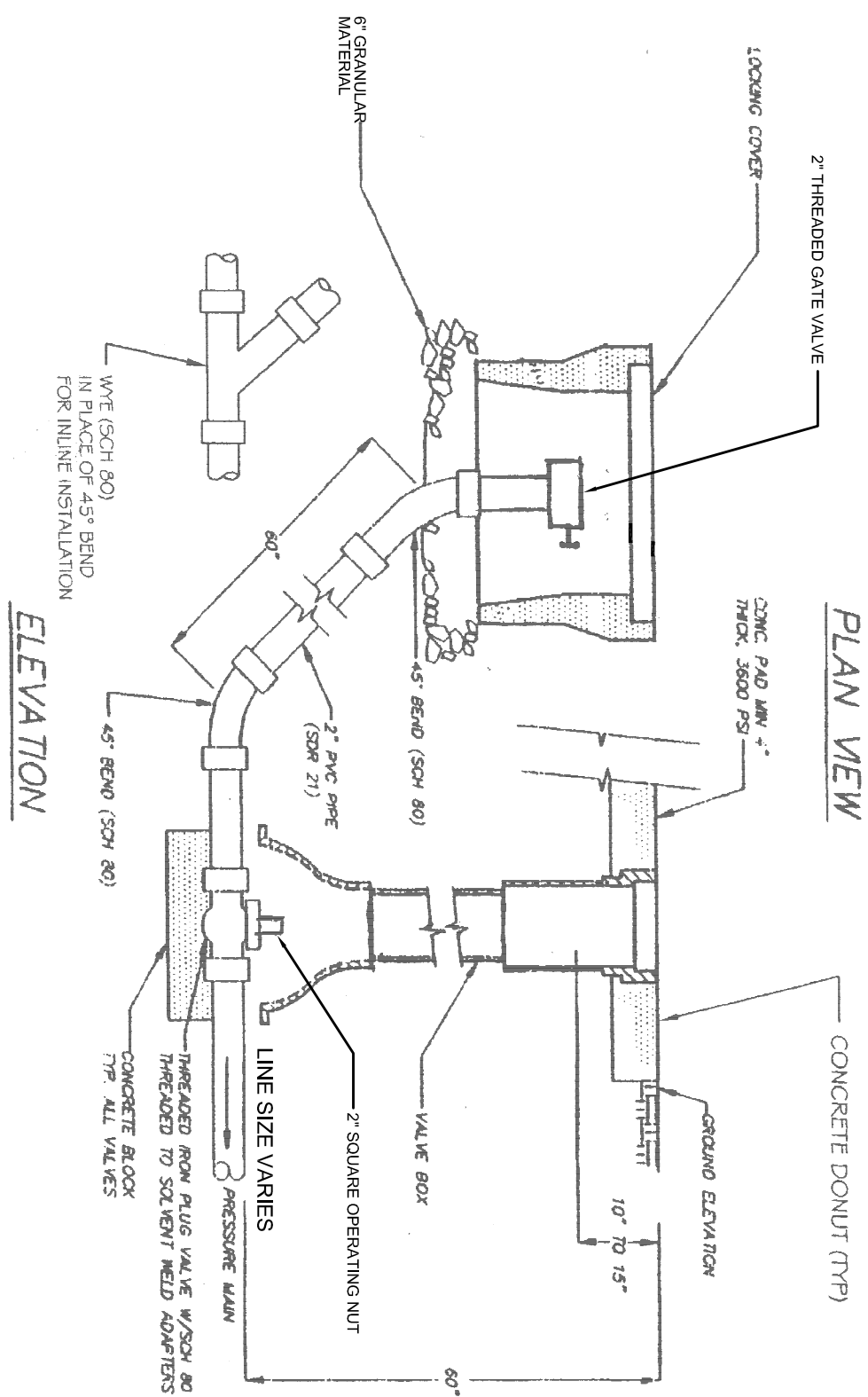


FINAL DESIGN
NOT RELEASED
FOR CONSTRUCTION



- NOTES:
1. SERVICES SHALL BE LOCATED ADJACENT TO LOT LINE IN THE LOT ROAD FRONTAGE.
 2. BOX SHALL NOT BE IN SIDEWALKS OR DRIVEWAYS.
 3. TOP OF BOX SHALL BE FLUSH WITH FINISH GRADE OF LOT.

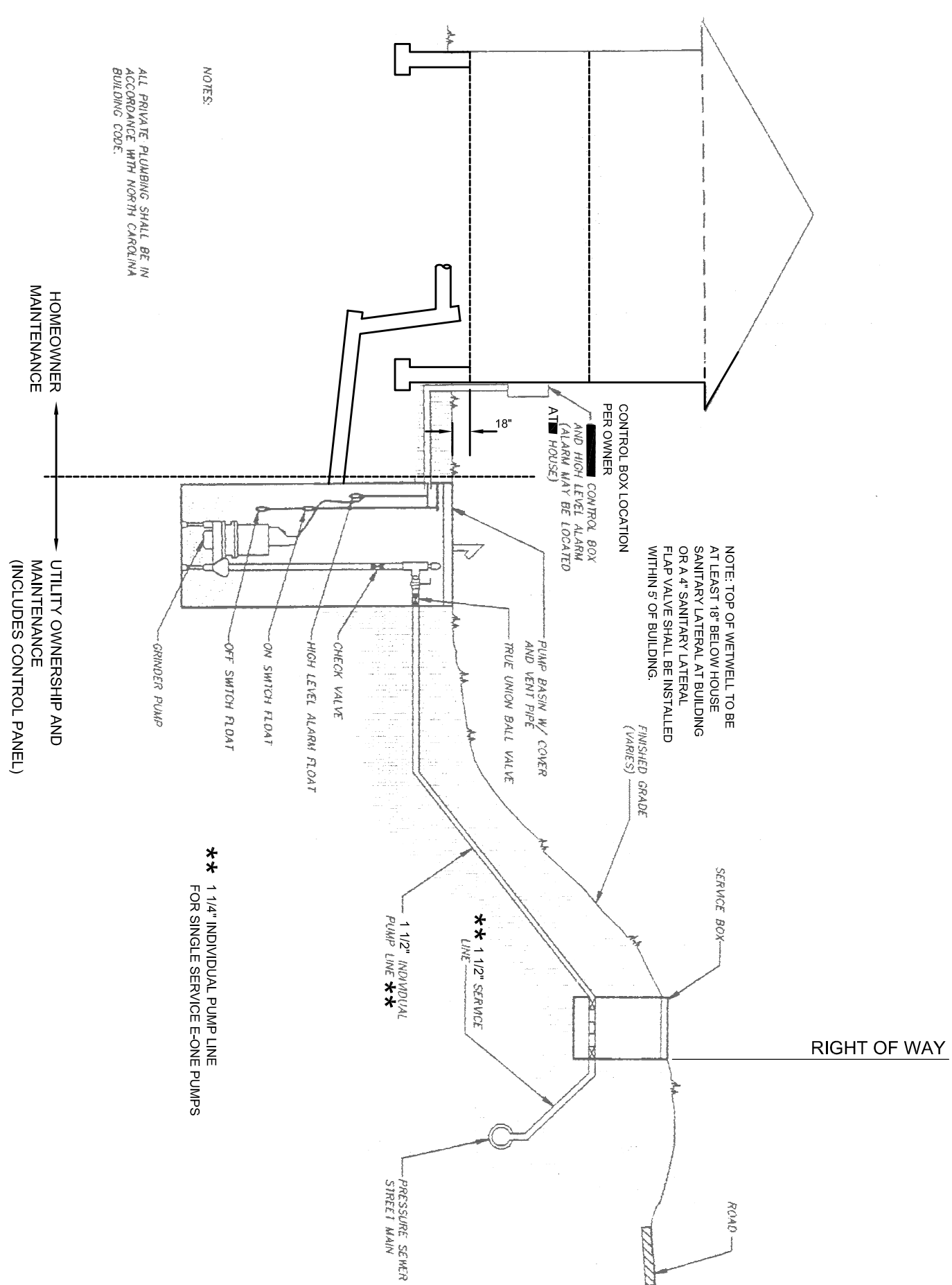
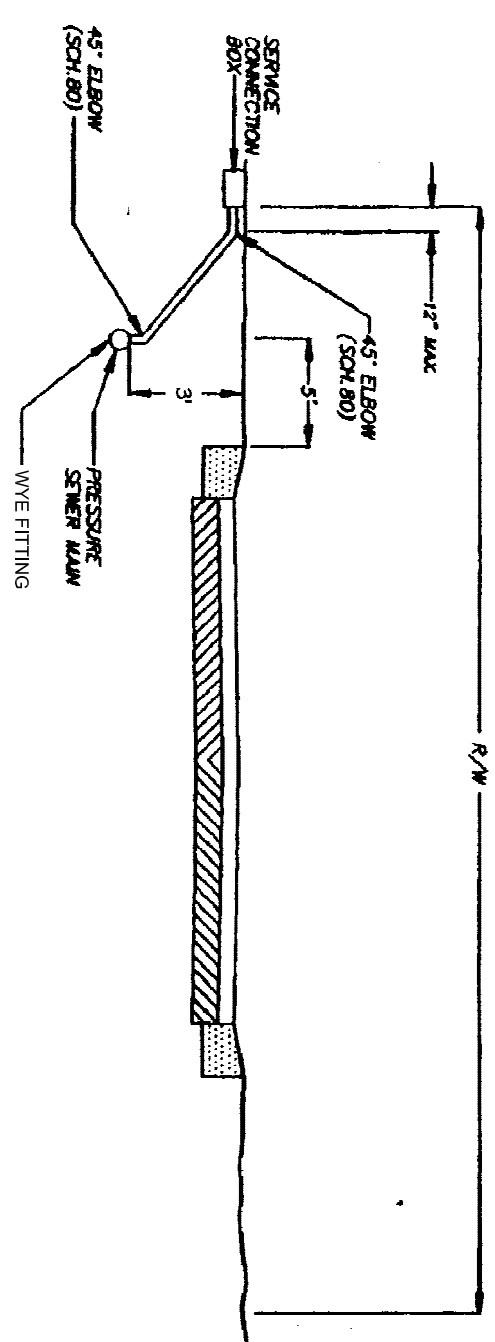
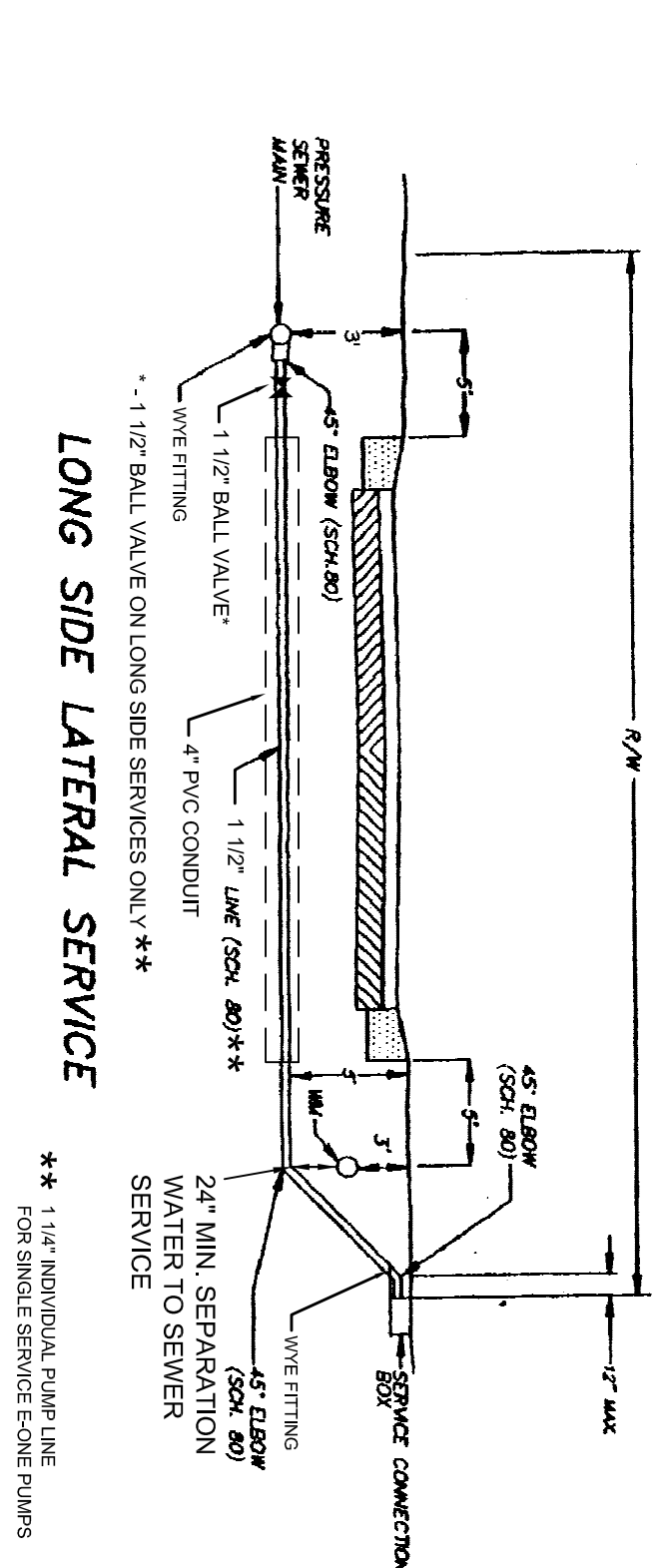
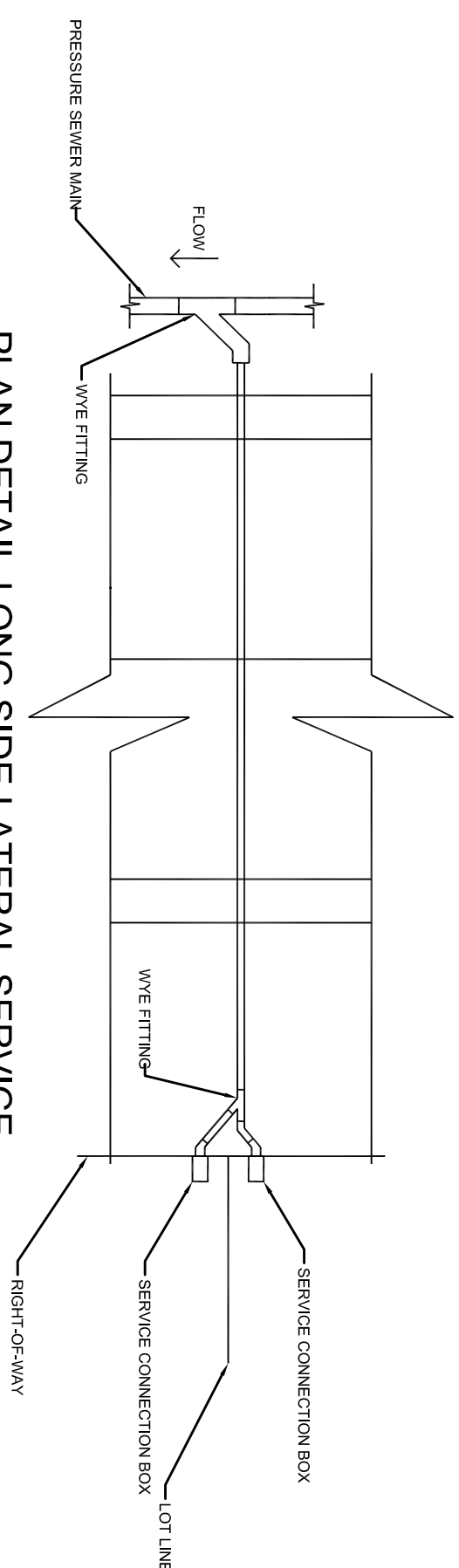


PRESSURE SEWER - STANDARD DETAIL

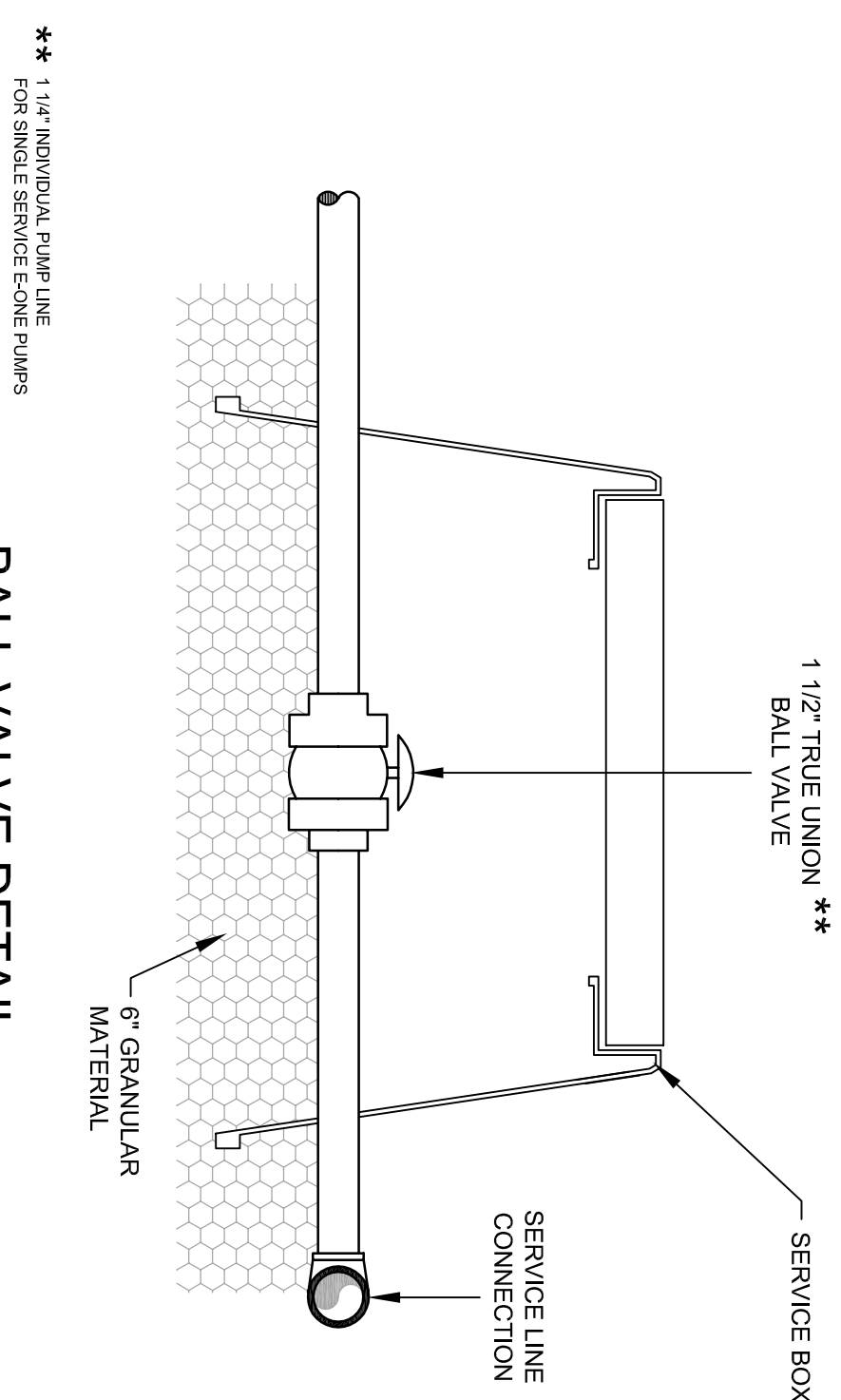
PRESSURE SEWER - STANDARD DETAIL

PRESSURE SEWER - STANDARD DETAIL
CLEANOUT AT END LINE INSTALLATION

CLEANOUT AT END LINE INSTALLATION



NOTE: NEW SEWER LATERALS WILL MEET THE SEPARATION REQUIREMENTS OF 15A NCAC 02T.0305 (F).



PRESSURE SEWER - STANDARD DETAIL

LATERAL SERVICE

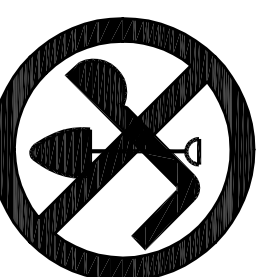
LATERAL SERVICE

PRESSURE SEWER - STANDARD DETAIL

INDIVIDUAL GRINDER PUMP SYSTEM

BALL VALVE DETAIL
FOR LONG-SIDE SERVICE

FOR LONG-SIDE SERVICE
NOT TO SCALE



BEFORE YOU DIG CALL
THE NC ONE CALL CENTER
1-800-632-4949
IT'S THE LAW!

FINAL DESIGN
NOT RELEASED
FOR CONSTRUCTION

19

Of _____

Date:	SEPTEMBER 28, 2015
Scale:	-
Drawn:	ACS
Checked:	AJF
Project No.	800-12
Computer Plot Name	800-12 Phase 3B - Sewer Details.dwg
Sheet No:	

Scale: 1

Drawn:

Checked:

Project No.

Computer Dwg. Name
800-12 Phase 3B - Sewer Details.dwg

Sheet No.

WESTFALL SUBDIVISION PH 3B & 4B
CONSTRUCTION PLANS
SEWER DETAILS
WILLIAMS TOWNSHIP
CHATHAM COUNTY, NORTH CAROLINA

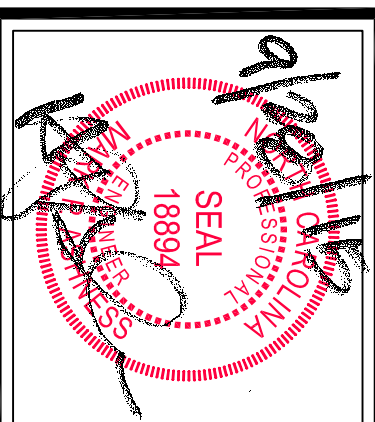
CONSTRUCTION PLANS

SEWER DETAILS

WILLIAMS TOWNSHIP
CHATHAM COUNTY, NORTH CAROLINA

WILLIAMS TOWNSHIP
CHATHAM COUNTY, NORTH CAROLINA

CHATHAM COUNTY, NORTH CAROLINA




CE GROUP

301 GLENWOOD AVE. 220
RALEIGH, NC 27603
PHONE: 919-367-8790
FAX: 919-322-0032

www.cegroupinc.com

License # C-1739

301 GLENWOOD AVE. 220
RALEIGH, NC 27603
PHONE: 919-367-8790
FAX: 919-322-0032

PHONE: 919-367-8790
FAX: 919-322-0032

FAX: 919-322-0032

FAX: 919-322-0032

www.cegroupinc.com

License # C-1739

[illegible][illegible]

