

End Of Committee Consensus Responses To Citizens' Map Change Requests.

- **Committee Discussion:**
 - Affirm Or Revise The Changes Presented
 - If Committee Wishes To Revisit One Of The Changes:
 - Direct The Joint Staff Team To Prepare Recommendations?
 - Have The Committee Propose Revisions?

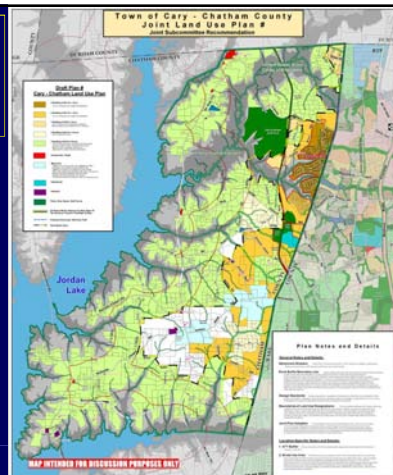
Resolving The Two Nodes

- In Aug. 2010, JIC Proposed Taking Two Draft Plans To A Community Meeting For Feedback On Node Options. One Plan Would Show Only The Eastern Node, The Other Plan Would Show Both Nodes. Suggested To Also Show A Plan With Just The Western Node.
- Does Committee Still Wish To Do That? Would Committee Prefer To Develop Greater Closure On the Proposed Mixed Use Node(s), And Hold A Meeting After Resolution Of Entire Package Of Change Requests?

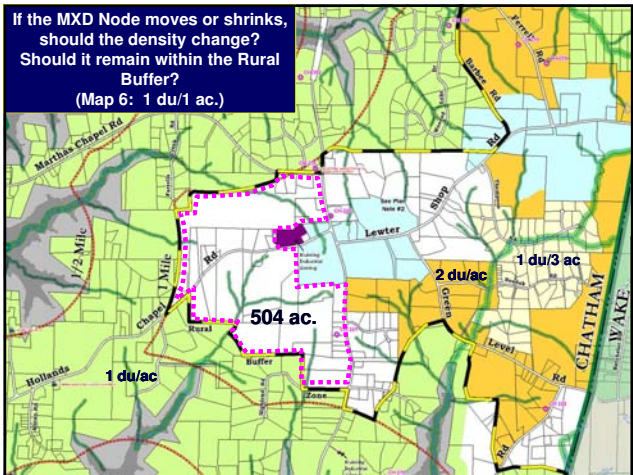
89

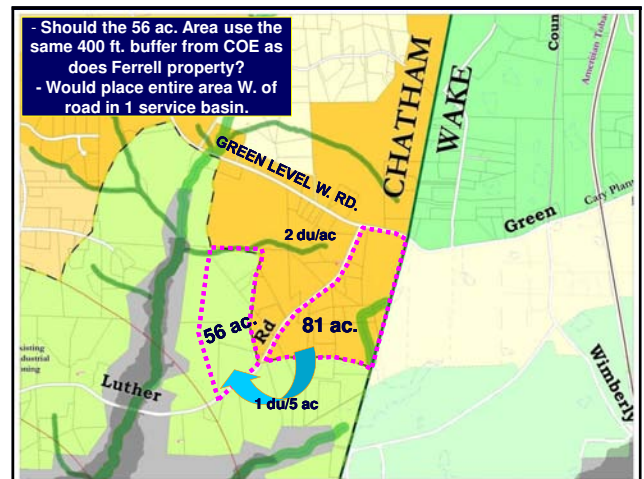
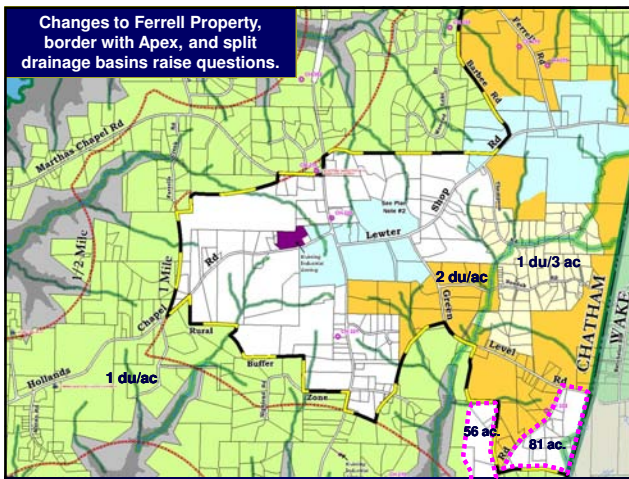
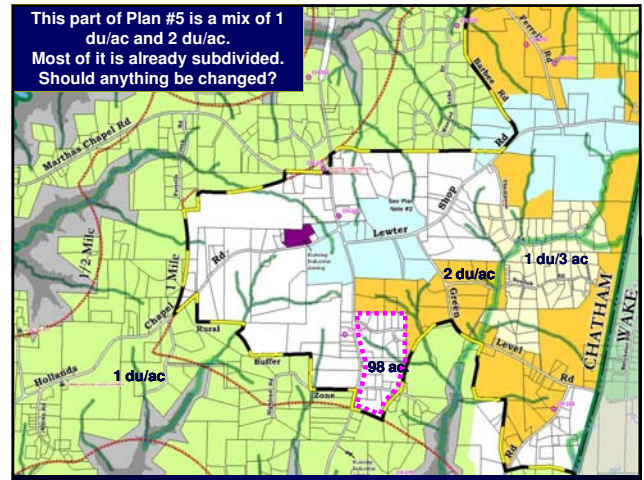
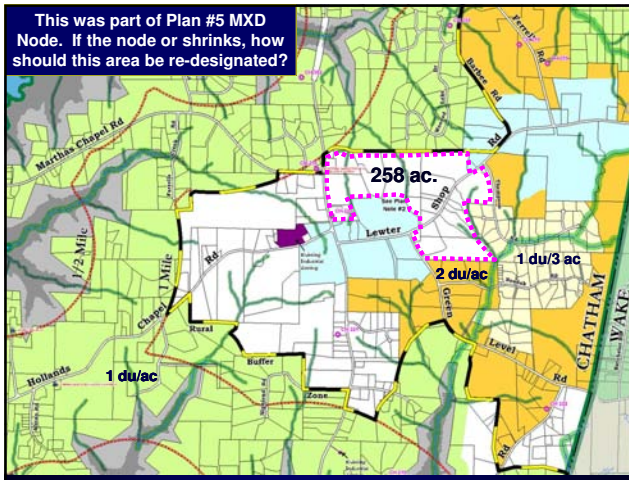
Other Unresolved Map Issues

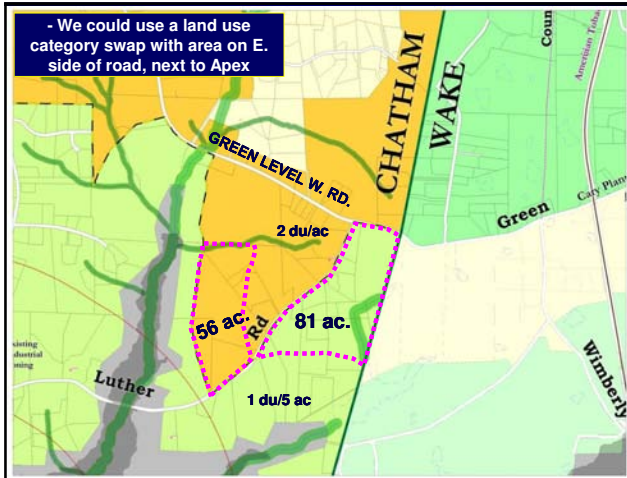
Discussion Draft From Aug. 2010



91







Ferrell Property Response And Luther Road Proposal Raises Other Questions

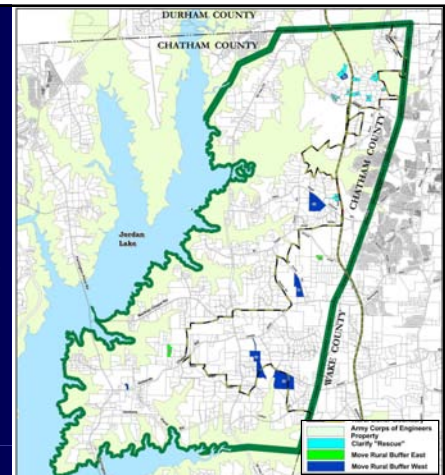
- Significant Amounts Of Land Within ¼ Mile Of COE Are Already Cleared, In Active Agriculture
- COE Land Already Provides The Buffer Around The Lake, So The ¼ Mile Buffer Is A Buffer Of The Buffer
- Should Staff Team Review The Map For Any Other Areas Where It Might Be Advisable To Revisit The ¼ Mile Coe Buffer, Esp. For Efficient Utility Provision Within Drainage Sub-basins?

98

Rural Buffer Issue, Continued

Rural Buffer Comments

100



Rural Buffer: Background Information

- The Buffer Line deals with property eligibility for public utilities, not annexation
- Properties east of Buffer Line:
 - Are not obligated to connect to utilities
 - Are eligible to request Cary utilities, but Cary is not obligated to agree to requests
 - Are not guaranteed to have major service lines within close proximity; no planned extensions
- Cost of utility extension borne by property owner
- Cary usually requests annexation in order to receive utilities, but there are exceptions

101

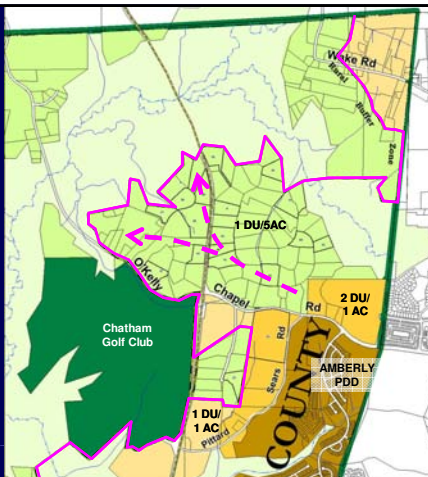
Rural Buffer/Urban Services Boundary

- Committee Heard Presentation On Long-Range Utilities Planning At Aug. 2010 Meeting
- Discussion About Ability To Provide Utility Rescues In Areas Not Included In Long Range Plans
- Some Committee Members Wished To Revisit The Overall Rural Buffer Boundaries, Purpose, And Need

102

Rural Buffer Proposal

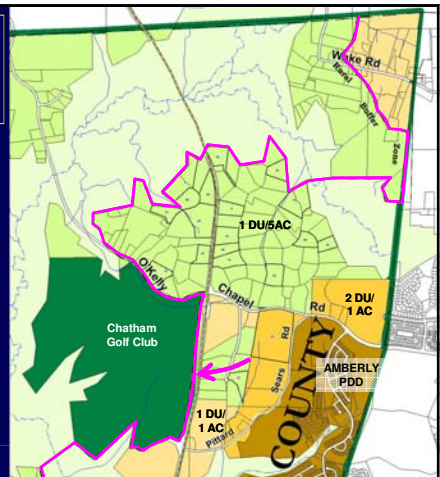
Extend Rural Buffer to Include Rosemont
(Not Resolved)



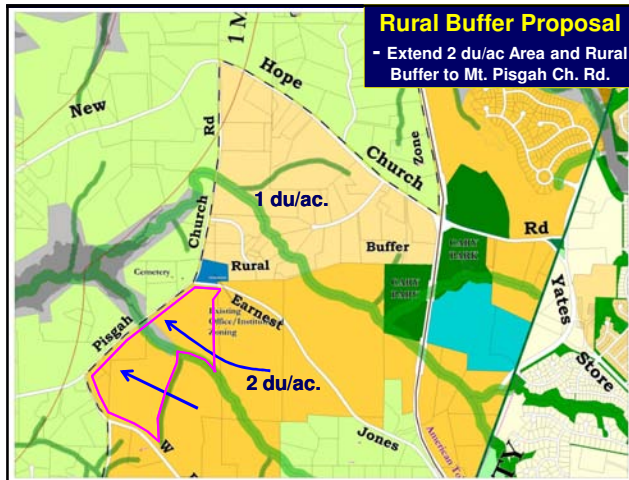
103

Rural Buffer Proposal

Also Extend Rural Buffer to Also Include all of Chatham Glen Drive/Subdiv.
(Not Resolved)



104



End Of Major Unresolved Map Issues

- **Committee Discussion:**
 - Direct The Joint Staff Team To Prepare Recommendations For These Issues, For The Committee's Consideration?
 - Have The Committee Propose Revisions?