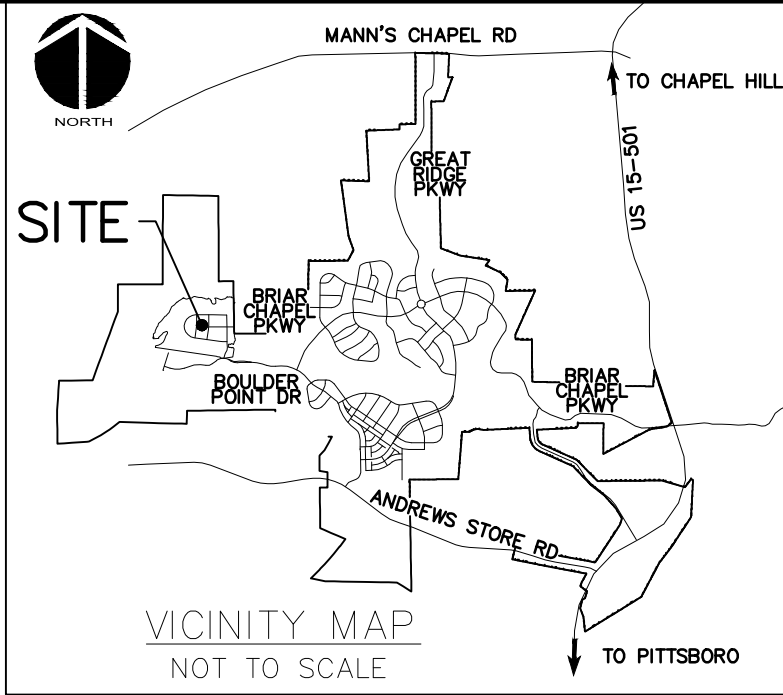
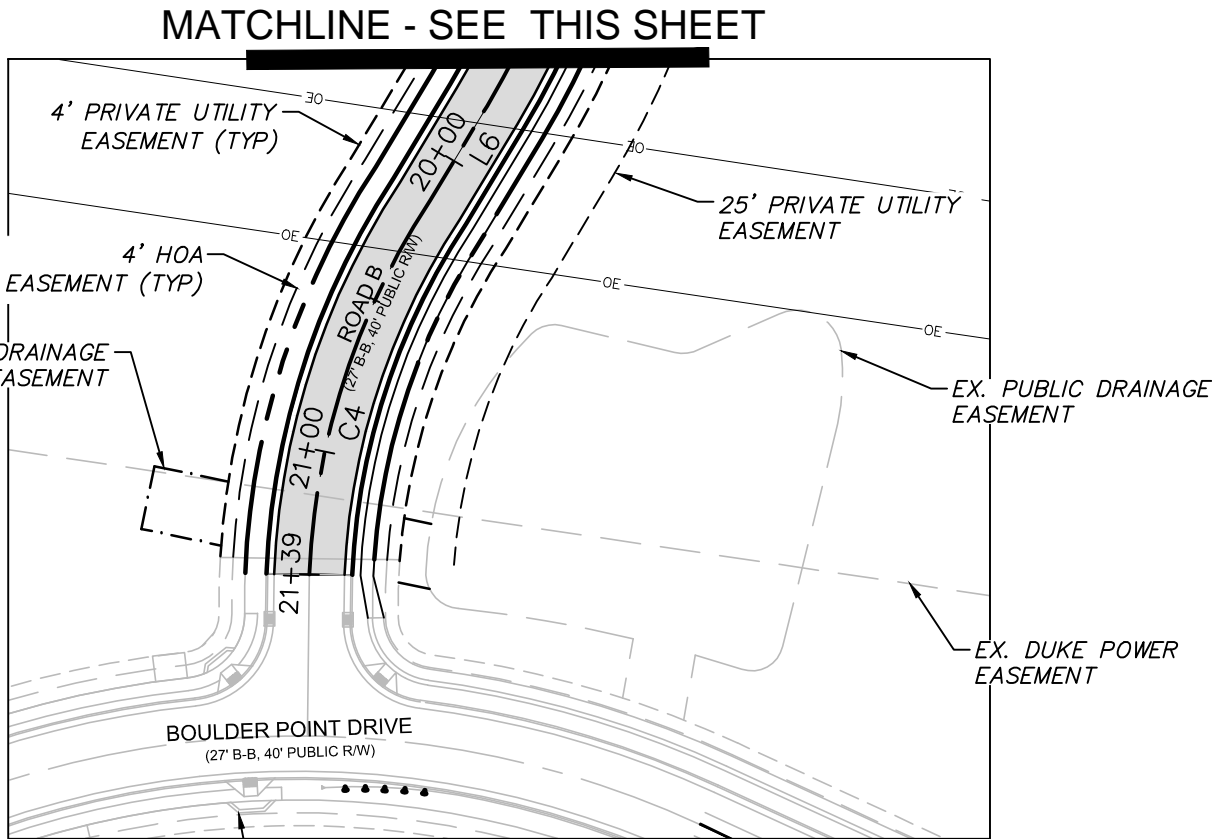


- LEGEND:**
- R/W LINE
  - FUTURE R/W LINE
  - EXISTING R/W LINE
  - HOA EASEMENT LINE
  - PUBLIC UTILITY EASEMENT LINE
  - PUBLIC DRAINAGE EASEMENT
  - EXISTING POWER LINE EASEMENT
  - OVERHEAD POWER LINE
  - 10' NO BUILD BUFFER LINE
  - RIPARIAN BUFFER LINE
  - BMP MAINTENANCE & ACCESS EASEMENT
  - ROADWAY CENTERLINE

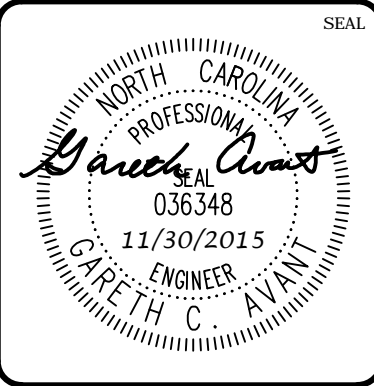


ALIGNMENT LINE DATA		
LINE #	LENGTH	BEARING
L1	653.20'	N89°50'21"W
L2	144.46'	N89°50'21"W
L3	659.82'	S81°31'57"E
L4	118.93'	N89°03'14"E
L5	840.27'	S0°56'46"E
L6	34.61'	S31°03'36"W
L7	269.50'	S0°09'39"W
L8	262.13'	S8°28'03"W
L9	265.14'	S0°09'39"W
L10	257.78'	S8°28'03"W
L11	470.66'	N89°50'21"W
L12	176.40'	S89°50'21"E

ALIGNMENT CURVE DATA					
CURVE #	ARCH LENGTH	RADIUS	CHORD BEARING	CHORD LENGTH	DELTA
C1	887.00'	296.00'	S4°18'51"W	590.45'	171°41'36"
C2	82.15'	500.00'	S86°14'22"E	82.06'	9°24'49"
C3	139.65'	250.00'	S15°03'25"W	137.84'	32°00'23"
C4	124.20'	230.00'	S17°54'05"W	122.70'	30°56'26"
C5	108.73'	750.00'	S4°18'51"W	108.64'	8°18'24"
C6	72.49'	500.00'	S4°18'51"W	72.42'	8°18'24"
C7	1.81'	300.00'	S89°39'59"E	1.81'	0°20'44"



REV. NO.	DESCRIPTIONS	DATE
3	REVISED PER COMMENTS RECEIVED FROM NCOT	2015.11.30
2	REVISED PER COMMENTS RECEIVED FROM CHATHAM COUNTY	2015.11.12
1	ISSUED FOR PERMITTING	2015.09.30



**MCKIM & CREED**  
1730 Varsity Drive, Suite 500  
Raleigh, North Carolina 27606  
Phone: (919)233-8091, Fax: (919)233-8031  
F-1222  
www.mckimcreed.com

**BRIAR CHAPEL™**  
by  
**Newland COMMUNITIES**

**BRIAR CHAPEL  
PHASE 16 SOUTH  
CHATHAM COUNTY, NORTH CAROLINA**  
  
**SITE PLAN**

DATE: SEPTEMBER 30, 2015 MCE PROJ. # 02735-0149 DRAWN: BSS DESIGNED: BSS CHECKED: GCA PROJ. MGR: CHS	SCALE: HORIZONTAL: AS NOTED VERTICAL: N/A	M&C FILE NUMBER: C1.X DRAWING NUMBER: C1.2
STATUS: FINAL DRAWINGS FOR REVIEW PURPOSES ONLY		REVISION: 3