

**BRADSHAW & ROBINSON, LLP**

ATTORNEYS AND COUNSELORS AT LAW

HALL-LONDON HOUSE

128 HILLSBORO STREET

POST OFFICE BOX 607

PITTSBORO, NORTH CAROLINA 27312

PATRICK E. BRADSHAW  
NICOLAS P. ROBINSON  
ANDREW T. SLAWTER  
TERESA G. HEATH

(919) 542-2400  
FAX 542-0496

robinson@bradshawrobinson.com

October 12, 2016

James Crawford, Chairman  
Chatham County Board of Commissioners  
80-A East Street  
Pittsboro, North Carolina 27312

Via Hand Delivery &  
Electronic Mail

RE: Briar Chapel: Request for Compact Community Ordinance ("CCO") **Waiver to Allow PSNC Regulator Station in 15-501 Viewshed Buffer Area**

Dear Board of Commissioners:

This letter serves as a formal request by NNP-Briar Chapel, LLC for a Waiver under the CCO to approve a request by Public Service Company of North Carolina (PSNC) to locate a landscaped natural gas line regulator station within the viewshed buffer area along old Highway 15-501 South near the Andrews Store Road intersection. Attached is a diagram of the location and size of the proposed station as well as a proposed landscaping plan for the regulator station (the "PSNC Station").

While the Compact Communities Ordinance does not prohibit such a use within the viewshed buffer, neither does it specifically allow for above-ground utilities within the viewshed buffer. This PSNC Station serves as single unit that will connect a PSNC transmission line to a PSNC distribution line. The PSNC Station is regional infrastructure that will enhance transmission to the local area, both within and outside of Briar Chapel. Its purpose is to lower the pressure of the natural gas coming off the main transmission line to distribution pressure. Of course, it will serve as an integral infrastructure component allowing PSNC to service the needs of its growing customer base nearby, including both residential and commercial.

The timing of this request is based on the fact that the adaptation of this PSNC Station goes hand-in-hand with the current utility relocation that is occurring in connection with the roll-out of Briar Chapel's SD-W commercial area. The utilities formerly located along the old Highway 15-501 corridor are now in the process of being relocated to the new 15-501 corridor. The timing of this request is intended to coordinate all of PSNC's necessary utility work in the area in order to maximize efficiency of these adjustments.

As I am sure you recall, the Compact Communities Ordinance ("CCO"), Section 15, authorizes the Board of Commissioners to adjust, modify, reduce or waive requirements of the

Letter to Board of Commissioners  
October 12, 2016  
Page Two

CCO. There is a reasonable nexus between the request and the impact of the compact community.

Based on the foregoing, the enclosed proposed Order of the Board of Commissioners allowing the relief requested is submitted to the Board of Commissioners for a vote at its meeting of November 21, 2016. This is to request of the County Manager that the request be placed on the Commissioners Agenda for their meeting on November 21, 2016.

Please let me know if you have any questions or concerns regarding the above.

Very truly yours,



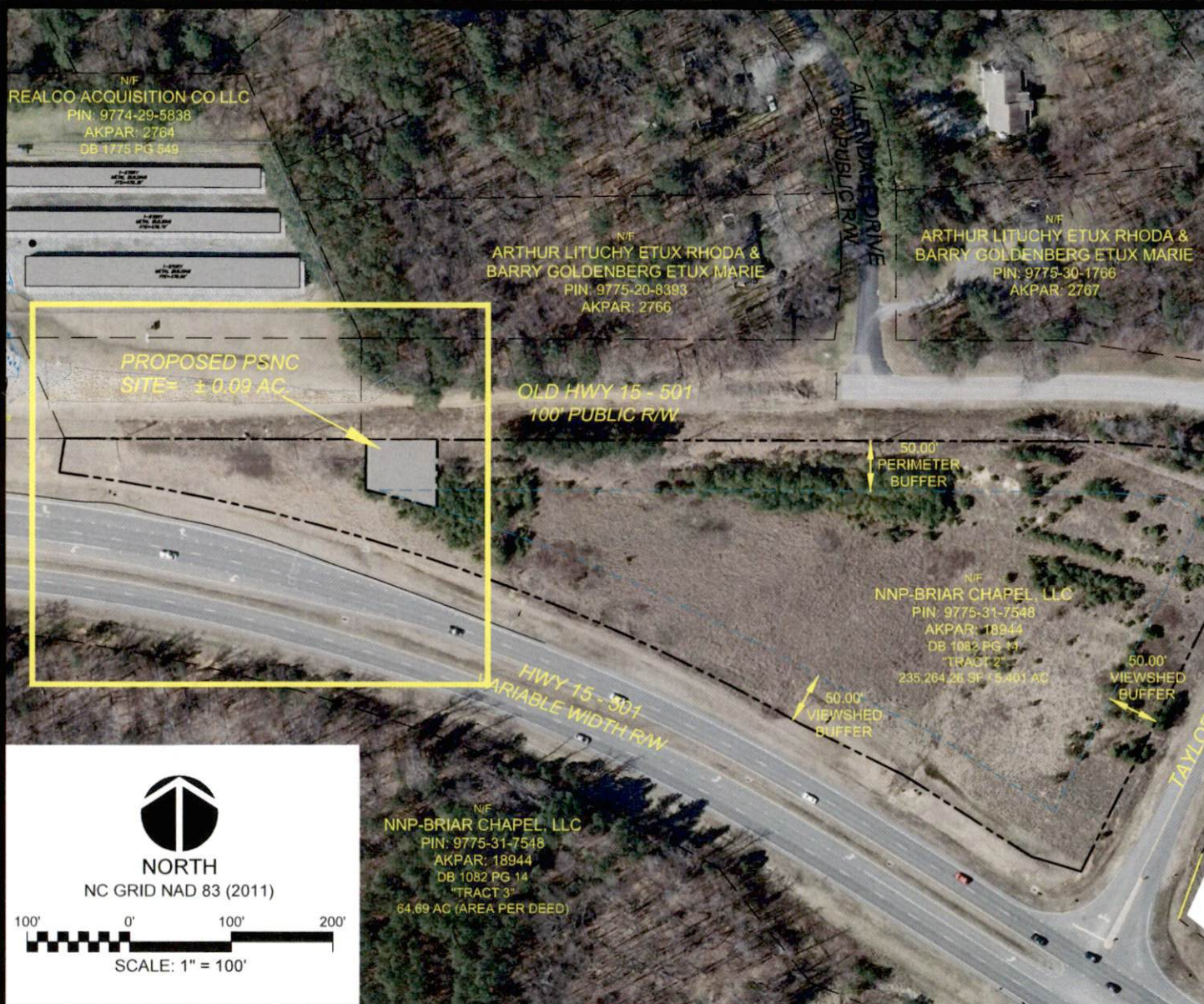
Nicolas P. Robinson

NPR:amm

Enclosure

c: Renee Paschal, County Manager  
Jason Sullivan, Planning Director  
Lee Bowman





VICINITY MAP  
NTS

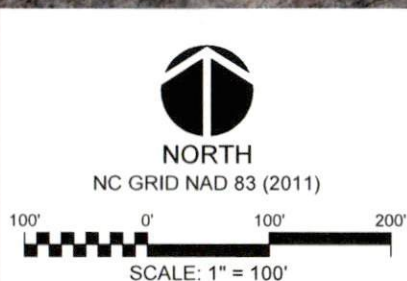
**CE GROUP**

301 GLENWOOD AVE, 220  
RALEIGH, NC 27603  
PHONE: 919-367-8790  
FAX: 919-322-0032

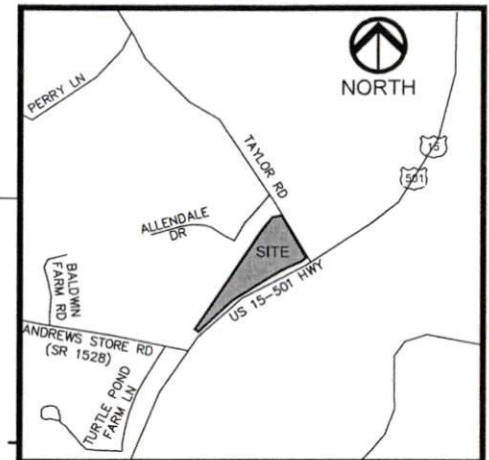
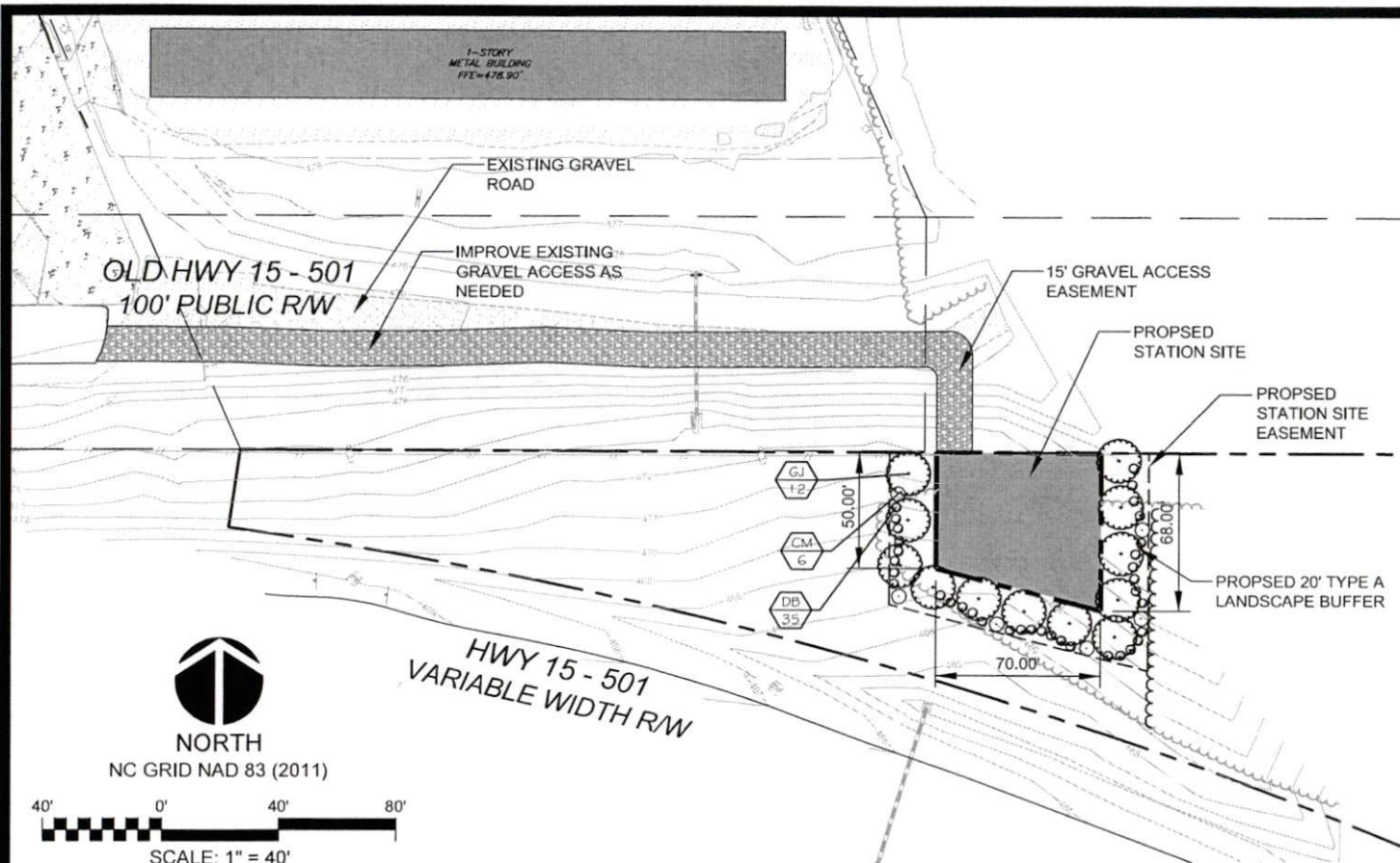
www.cegroupinc.com  
License # C-1739

**PSNC PROPOSED  
UTILITY STATION  
KEY MAP**

**CHATHAM COUNTY, NC**  
**OCTOBER 11, 2016**







VICINITY MAP  
NTS



# PLANT LIST

SYM.	QUAN.	BOTANICAL NAME	COMMON NAME	CAL.	HT.	ROOT	REMARKS
CANOPY TREES							
GJ	12	Thuja x 'Green Giant'	Green Giant Arborvitae	2-1/2"	8' - 10'	B & B	
CM	6	Lagerstroemia indica 'Miami'	Crape Myrtle	1-1/2"	6' - 8'	B & B	
SHRUBS							
DB	35	Ilex cornuta 'Burfordii nana'	Dwarf Burford Holly		18"-24"	CONT.	

**PSNC PROPOSED  
UTILITY STATION  
CHATHAM COUNTY, NC  
OCTOBER 11, 2016**