





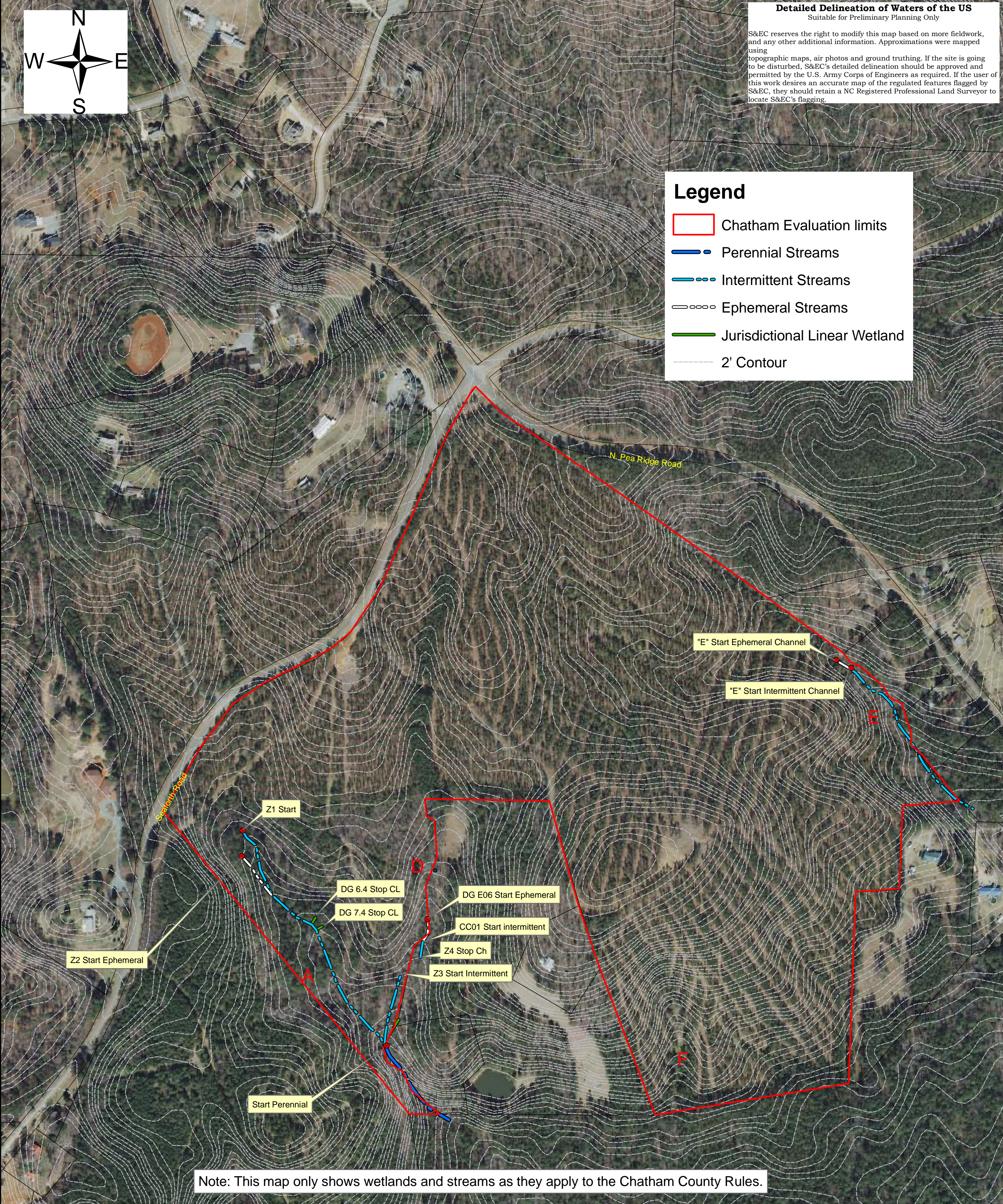


Detailed Delineation of Waters of the US Suitable for Preliminary Planning Only

S&EC reserves the right to modify this map based on more fieldwork, and any other additional information. Approximations were mapped using topographic maps, air photos and ground truthing. If the site is going to be disturbed, S&EC's detailed delineation should be approved and permitted by the U.S. Army Corps of Engineers as required. If the user of this work desires an accurate map of the regulated features flagged by S&EC, they should retain a NC Registered Professional Land Surveyor to locate S&EC's flagging.

Legend

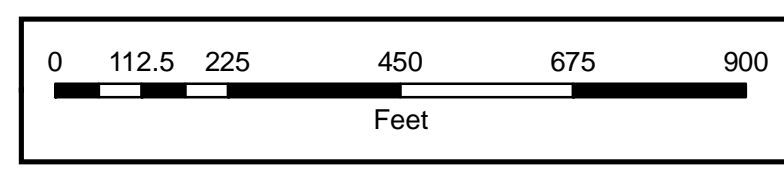
-  Chatham Evaluation limits
-  Perennial Streams
-  Intermittent Streams
-  Ephemeral Streams
-  Jurisdictional Linear Wetland
-  2' Contour



Project Number:	10719.W1
Project Manager:	SB
Scale:	1" = 250'
Date:	5/12/15

Chatham County Wetland Sketch Map
Seaforth Site
Chatham County, NC

Source:
Chatham County GIS & nconemap.com



Soil & Environmental Consultants, PA
8412 Falls of Neuse Road, Suite 104, Raleigh, NC 27615 • Phone: (919) 846-5900 • Fax: (919) 846-9467
sandec.com