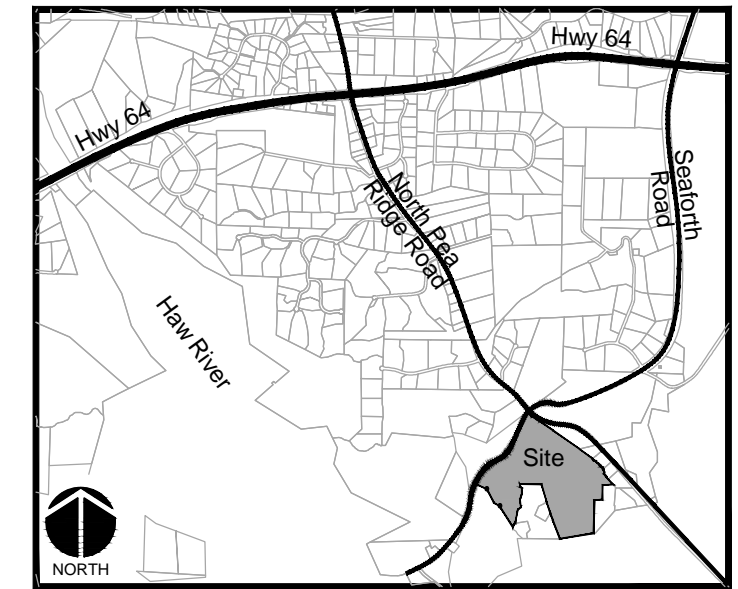
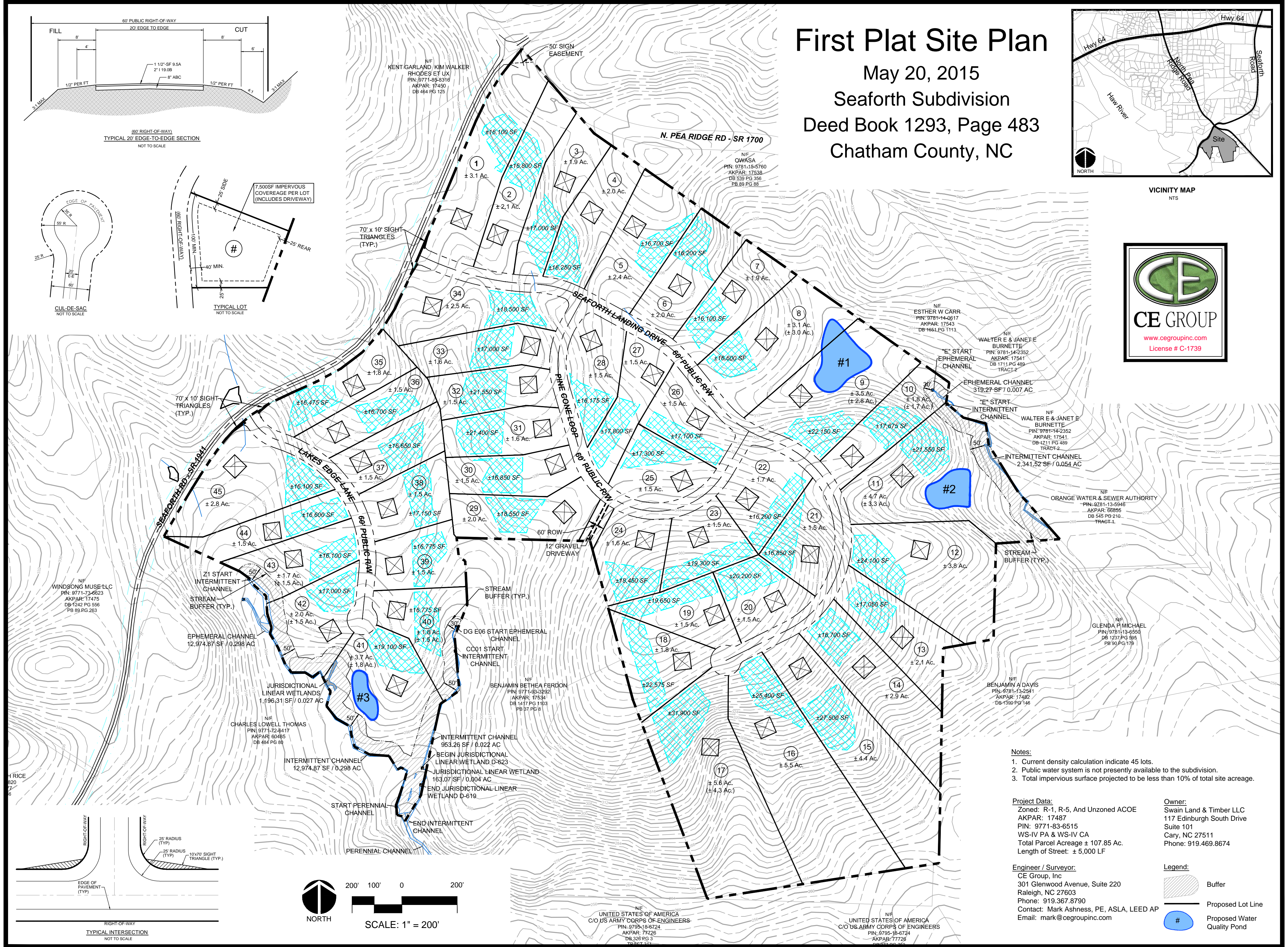
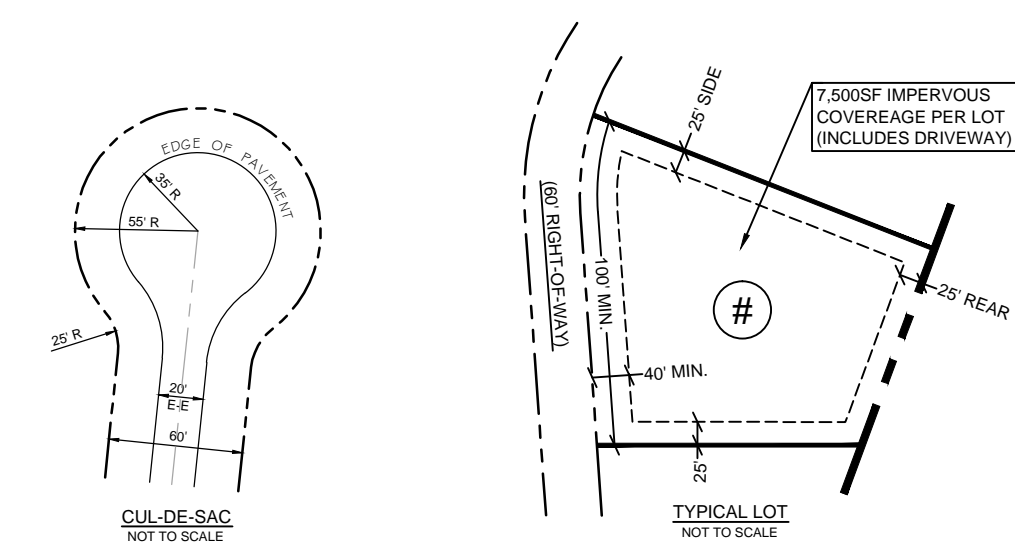
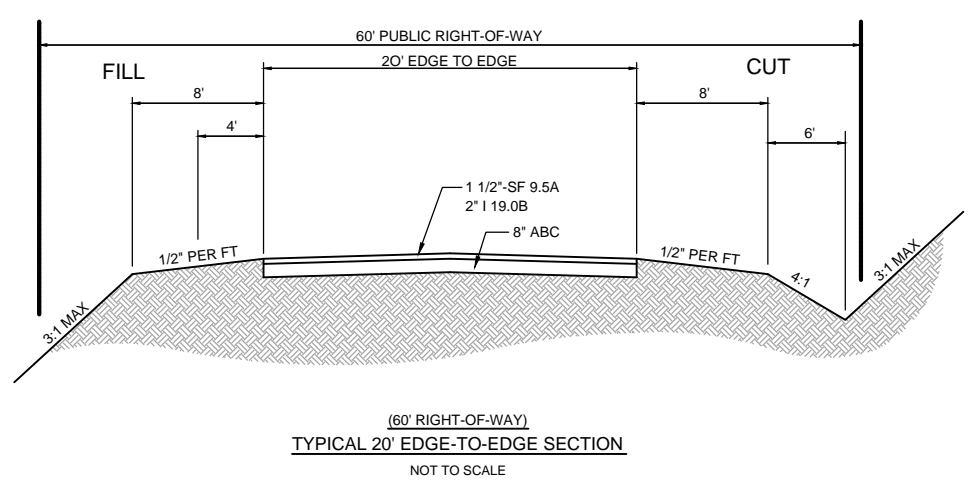


First Plat Site Plan

May 20, 2015
 Seaforth Subdivision
 Deed Book 1293, Page 483
 Chatham County, NC



VICINITY MAP
NTS



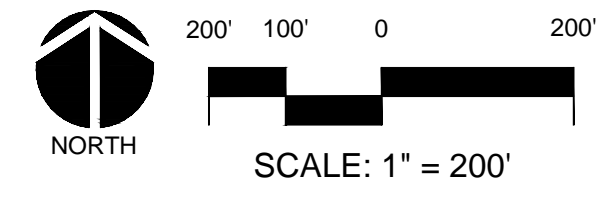
- Notes:**
1. Current density calculation indicate 45 lots.
 2. Public water system is not presently available to the subdivision.
 3. Total impervious surface projected to be less than 10% of total site acreage.

Project Data:
 Zoned: R-1, R-5, And Unzoned ACOE
 AKPAR: 17487
 PIN: 9771-83-6515
 WS-IV PA & WS-IV CA
 Total Parcel Acreage ± 107.85 Ac.
 Length of Street: ± 100.0 LF

Owner:
 Swain Land & Timber LLC
 117 Edinburgh South Drive
 Suite 101
 Cary, NC 27511
 Phone: 919.469.8674

Engineer / Surveyor:
 CE Group, Inc
 301 Glenwood Avenue, Suite 220
 Raleigh, NC 27603
 Phone: 919.367.8790
 Contact: Mark Ashness, PE, ASLA, LEED AP
 Email: mark@cegroupinc.com

- Legend:**
- Buffer
 - Proposed Lot Line
 - Proposed Water Quality Pond



UNITED STATES OF AMERICA
 C/O US ARMY CORPS OF ENGINEERS
 PIN: 9795-18-724
 AKPAR: 7726
 DB 326 PG 3
 TRACT 3

UNITED STATES OF AMERICA
 C/O US ARMY CORPS OF ENGINEERS
 PIN: 9795-18-674
 AKPAR: 77726
 DB 326 PG 3
 TRACT 3

