

CERTIFICATION OF OWNERSHIP AND DEDICATION

I (WE) HEREBY CERTIFY THAT I AM (WE ARE) THE OWNER(S) OF THE PROPERTY SHOWN AND DESCRIBED HEREON AND THAT I (WE) HEREBY ADOPT THIS PLAN OF SUBDIVISION WITH MY (OUR) FREE CONSENT, AND DEDICATE ALL RIGHT-OF-WAYS, STREETS, ALLEYS, WALKS, EASEMENTS, PARKS, AND OTHER OPEN SPACES TO PUBLIC OR PRIVATE USE AS NOTED.

OWNERS OR AUTHORIZED AGENT _____ DATE _____

REVIEW OFFICER CERTIFICATION

STATE OF NORTH CAROLINA, COUNTY OF CHATHAM

I, _____ REVIEW OFFICER FOR CHATHAM COUNTY, CERTIFY THAT THE MAP OR PLAT TO WHICH THIS CERTIFICATION IS AFFIXED MEETS ALL STATUTORY REQUIREMENTS FOR RECORDING.

REVIEW OFFICER _____ DATE _____

BY _____ TITLE _____

CERTIFICATE OF APPROVAL FOR RECORDING

I HEREBY CERTIFY THAT THE SUBDIVISION PLAT SHOWN HEREON HAS BEEN FOUND TO COMPLY WITH THE SUBDIVISION REGULATIONS FOR CHATHAM COUNTY, WITH THE EXCEPTION OF SUCH VARIANCES, IF ANY, AS NOTED IN THE MINUTES OF THE BOARD OF COMMISSIONERS, AND THAT IT HAS BEEN APPROVED BY THE BODY FOR RECORDING IN THE OFFICE OF THE COUNTY REGISTER OF DEEDS.

DATE _____

CHAIRMAN, CHATHAM COUNTY BOARD OF COMMISSIONERS _____

CERTIFICATION OF THE APPROVAL OF UTILITIES

I HEREBY CERTIFY THAT THE _____ IMPROVEMENTS HAVE BEEN INSTALLED IN AN ACCEPTABLE MANNER AND ACCORDING TO THE SPECIFICATIONS OF THE CHATHAM COUNTY UTILITY POLICY AND/OR THE CHATHAM COUNTY SUBDIVISION REGULATIONS, EXCEPT AS NOTED HEREON; OR PROPER PROVISIONS HAVE BEEN MADE FOR THEIR INSTALLATION.

DATE _____

SIGNATURE _____ TITLE _____

BY NNP-BRIAR CHAPEL, LLC

DEPARTMENT OF TRANSPORTATION
DIVISION OF HIGHWAYS

PROPOSED SUBDIVISION ROAD
CONSTRUCTION STANDARDS CERTIFICATION

APPROVED _____ DISTRICT ENGINEER _____

DATE _____

SURVEY NOTES:

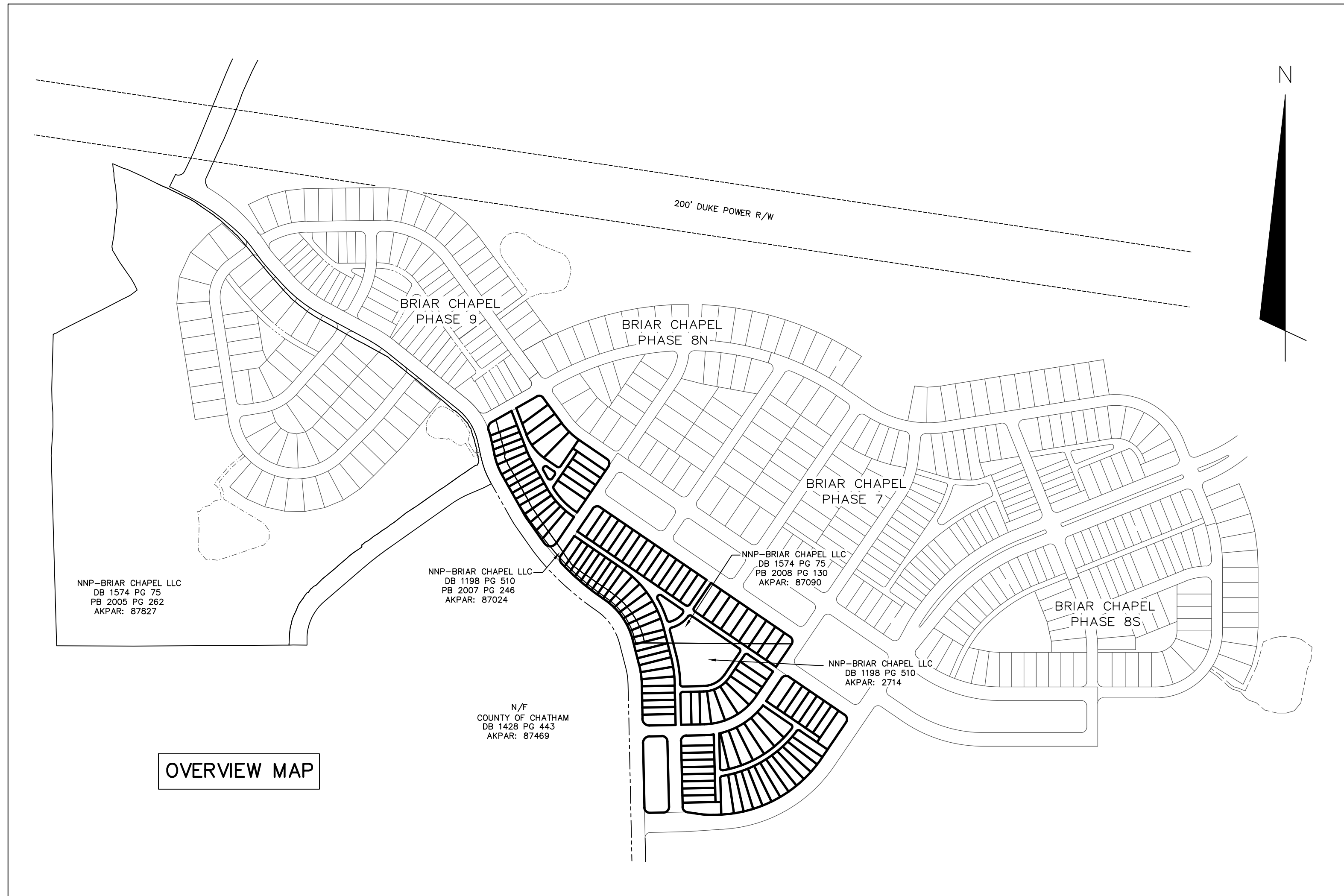
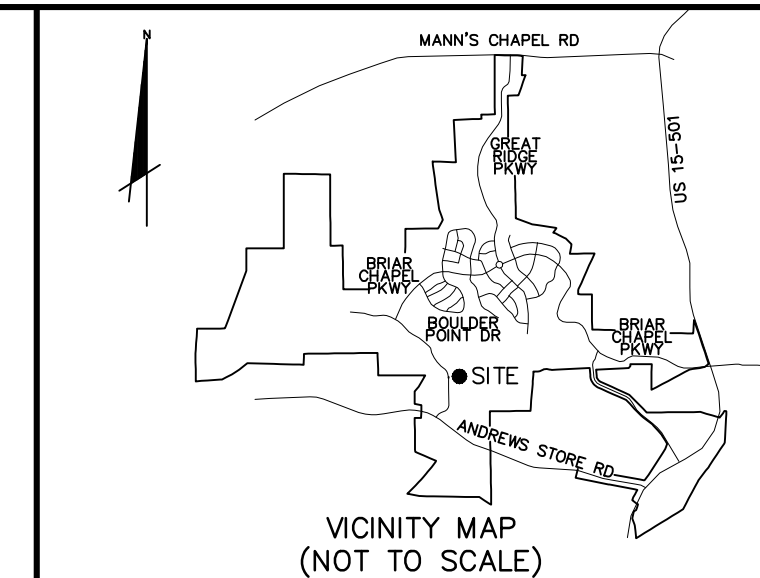
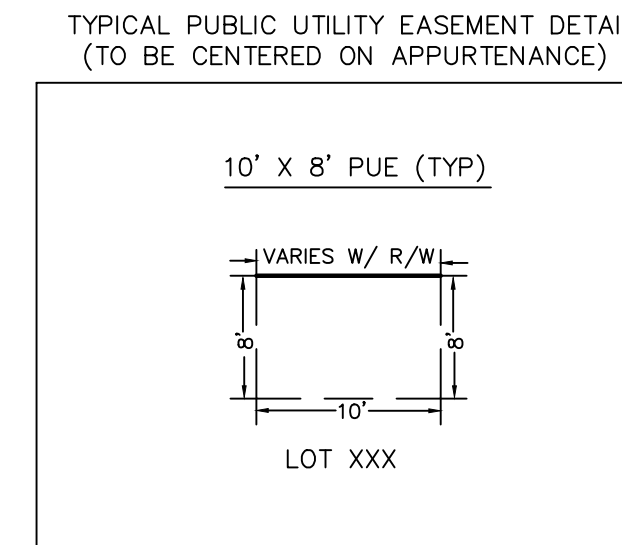
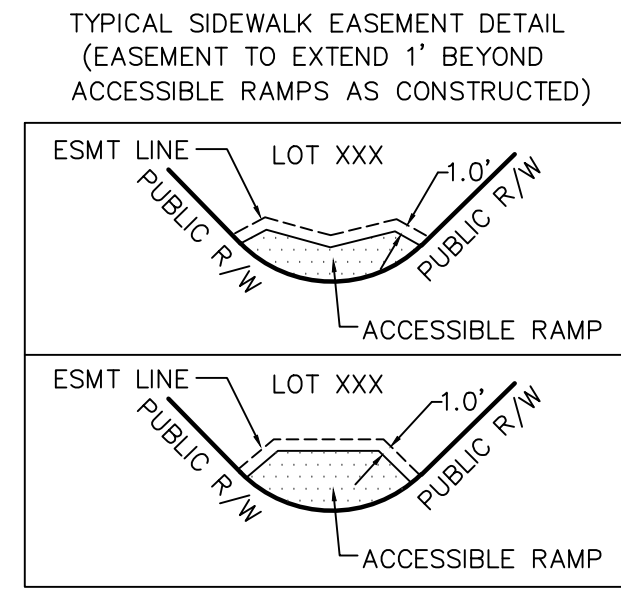
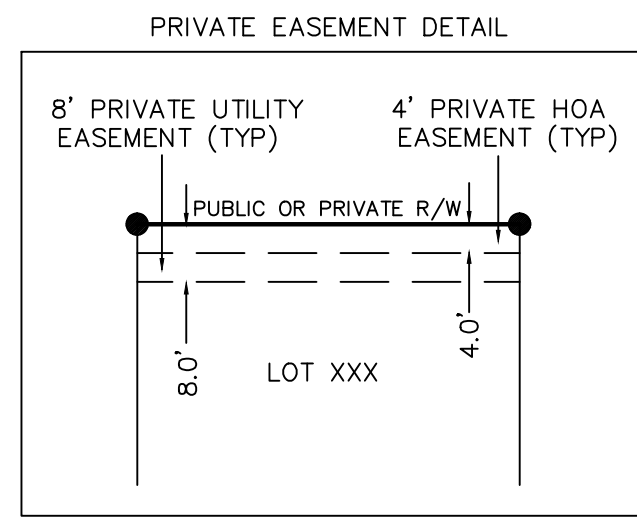
- ALL DISTANCES SHOWN ARE HORIZONTAL GROUND DISTANCES IN U.S. SURVEY FEET (UNLESS OTHERWISE STATED).
- NO NC GRID MONUMENT IS WITHIN 2,000' OF SURVEYED TRACT.
- ALL BEARINGS ARE BASED ON THE NORTH CAROLINA STATE PLANE COORDINATE SYSTEM (NAD 1983/NSRS 2007).
- THIS SURVEY PERFORMED AND MAP PREPARED WITHOUT THE BENEFIT OF A TITLE REPORT. THIS SURVEY IS SUBJECT TO ANY FACTS AND EASEMENTS WHICH MAY BE DISCLOSED BY A FULL AND ACCURATE TITLE SEARCH.
- SEE SHEET 3 OF 3 FOR LINE AND CURVE TABLE DATA.
- THIS PROPERTY IS LOCATED IN FLOOD HAZARD ZONE "X". AREAS DETERMINED TO BE OUTSIDE THE 0.2% ANNUAL AS WELL AS ZONE "AE" AS SHOWN ON FEMA FIRM MAP PANEL #371097650J WITH AN EFFECTIVE DATE OF FEBRUARY 2, 2007.
- PROJECT AREA INCLUDES PORTIONS OF PARCELS AKP# 87090, 2714 AND 87024. COMPLETE BOUNDARY SURVEYS OF THESE PARCELS WERE NOT PERFORMED IN THE COURSE OF THIS SURVEY. AREA CALCULATIONS FOR THESE PARCELS ARE BASED ON CHATHAM COUNTY GIS PARCEL DATA.
- TIE LINES SHOWN TO PUBLIC AND PRIVATE DRAINAGE EASEMENTS ARE CHORD DISTANCES.
- SIDEWALK EASEMENTS (SWE) SHOWN WILL BE BOUNDED BY PUBLIC RIGHT-OF-WAY AND BY LINES ONE FOOT BEYOND THE ACCESSIBLE RAMPS AS CONSTRUCTED.

ADDITIONAL NOTES:

- ALL LOTS SHOWN HEREON WILL BE CONVEYED SUBJECT TO RESTRICTIONS, CONDITIONS, COVENANTS AND PROVISIONS FOR SETBACKS, USE MAINTENANCE, EASEMENTS, ASSESSMENTS AND OTHER MATTERS CONTAINED IN THE DECLARATION OF COVENANTS, CONDITIONS AND RESTRICTIONS FOR BRIAR CHAPEL, RECORDED AT BOOK 1370, PAGE 1020, AND RE-RECORDED AT BOOK 1372, PAGE 884, AS AMENDED AND SUPPLEMENTED (THE "DECLARATION").
- THE DESIGNATIONS AND CONDITIONS OF USAGE OF COMMON AREA/OPEN SPACE ARE AS SET FORTH IN THE DECLARATION.
- MINIMUM SETBACKS FOR IMPROVEMENTS ON LOTS SHALL BE ESTABLISHED BY THE DECLARATION, THE DECLARANT (OR ITS DESIGNEE) UNDER THE DECLARATION, OR ANY DESIGN GUIDELINES ADOPTED PURSUANT TO THE DECLARATION.
- LIGHTING SHALL CONFORM WITH THE CHATHAM COUNTY LIGHTING ORDINANCE.
- THE 4' OR 5' PRIVATE HOA EASEMENTS SHOWN HEREON MAY BE EXERCISED BY NNP-BRIAR CHAPEL, LLC AND/OR BRIAR CHAPEL COMMUNITY ASSOCIATION, INC. FOR THE PURPOSE OF INSTALLATION, MAINTENANCE, REPAIR AND REPLACEMENT OF STREET TREES AND LANDSCAPING AND FOR SUCH PURPOSES AS AUTHORIZED UNDER ARTICLE XI OF THE DECLARATION.
- IN ADDITION TO ANY AND ALL EASEMENTS RESERVED OR GRANTED IN THE DECLARATION, DECLARANT RESERVES FOR ITSELF AND GRANTS TO THE ASSOCIATION (AS DEFINED IN THE DECLARATION) AND ALL UTILITY PROVIDERS (AS DEFINED IN THE DECLARATION), PERPETUAL, NON-EXCLUSIVE 4', 5', 6', 8', 9' AND 10' EASEMENTS (AS APPLICABLE) FOR ALL UTILITIES PURPOSES INCLUDED IN THE DECLARATION, INCLUDING, WITHOUT RESERVATION, THE PURPOSES OF ACCESS AND INSTALLING, INSPECTING, MAINTAINING, REPAIRING AND REPLACING UTILITIES ALONG ALL LOT FRONTAGE ON PUBLIC AND PRIVATE RIGHTS-OF-WAY. SEE INSET.
- THE EASEMENTS DESCRIBED ON THIS PLAT ARE IN ADDITION TO AND NOT IN LIMITATION OF ANY EASEMENTS DESCRIBED IN THE DECLARATION.

RIGHT-OF-WAY MAINTENANCE RESPONSIBILITY NOTE:

- MAINTENANCE OF PUBLIC R/W TO BE THE RESPONSIBILITY OF THE DEVELOPER AND/OR BRIAR CHAPEL COMMUNITY ASSOCIATION, INC. UNTIL SUCH TIME THAT THEY ARE ACCEPTED BY NCDOT.
- MAINTENANCE OF ALLEYWAYS, SHOWN HEREON AS PRIVATE R/W, TO BE THE RESPONSIBILITY OF THE DEVELOPER AND/OR BRIAR CHAPEL COMMUNITY ASSOCIATION, INC.



OVERVIEW MAP

SITE DATA

ZONING: CONDITIONAL USE DISTRICT - COMPACT COMMUNITY
 APPROXIMATE LINEAR FOOTAGE OF PUBLIC STREETS: 876 LF
 APPROXIMATE LINEAR FOOTAGE OF PRIVATE STREETS: 3,720 LF
 TOTAL NUMBER OF LOTS: 124
 TOTAL AREA OF LOTS: 11.832 ACRES
 515,391 SQUARE FEET
 TOTAL PRIVATE RIGHT-OF-WAY: 1.628 ACRES
 70,900 SQUARE FEET
 TOTAL PUBLIC RIGHT-OF-WAY: 0.882 ACRES
 38,440 SQUARE FEET
 TOTAL COMMON AREAS: 1.823 ACRES
 79,397 SQUARE FEET
 TOTAL PROJECT AREA: 16.165 ACRES
 704,128 SQUARE FEET

OWNER INFORMATION:

NNP-BRIAR CHAPEL, LLC
 16 WINDY KNOLL CIRCLE
 CHAPEL HILL, NC 27516
 PHONE: (919) 951-0700
 FAX: (919) 240-4963
 CONTACT: BILL MUMFORD, P.E.

DATE	REVISION	INITIAL

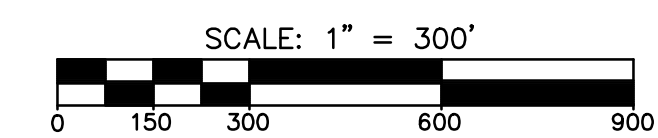
1730 Varsity Drive Suite 500
 Raleigh, North Carolina 27606
 Phone: (919)233-8091, Fax: (919)233-8031
 NC FIRM # 1222
 Internet Site: <http://www.mckimcreed.com>

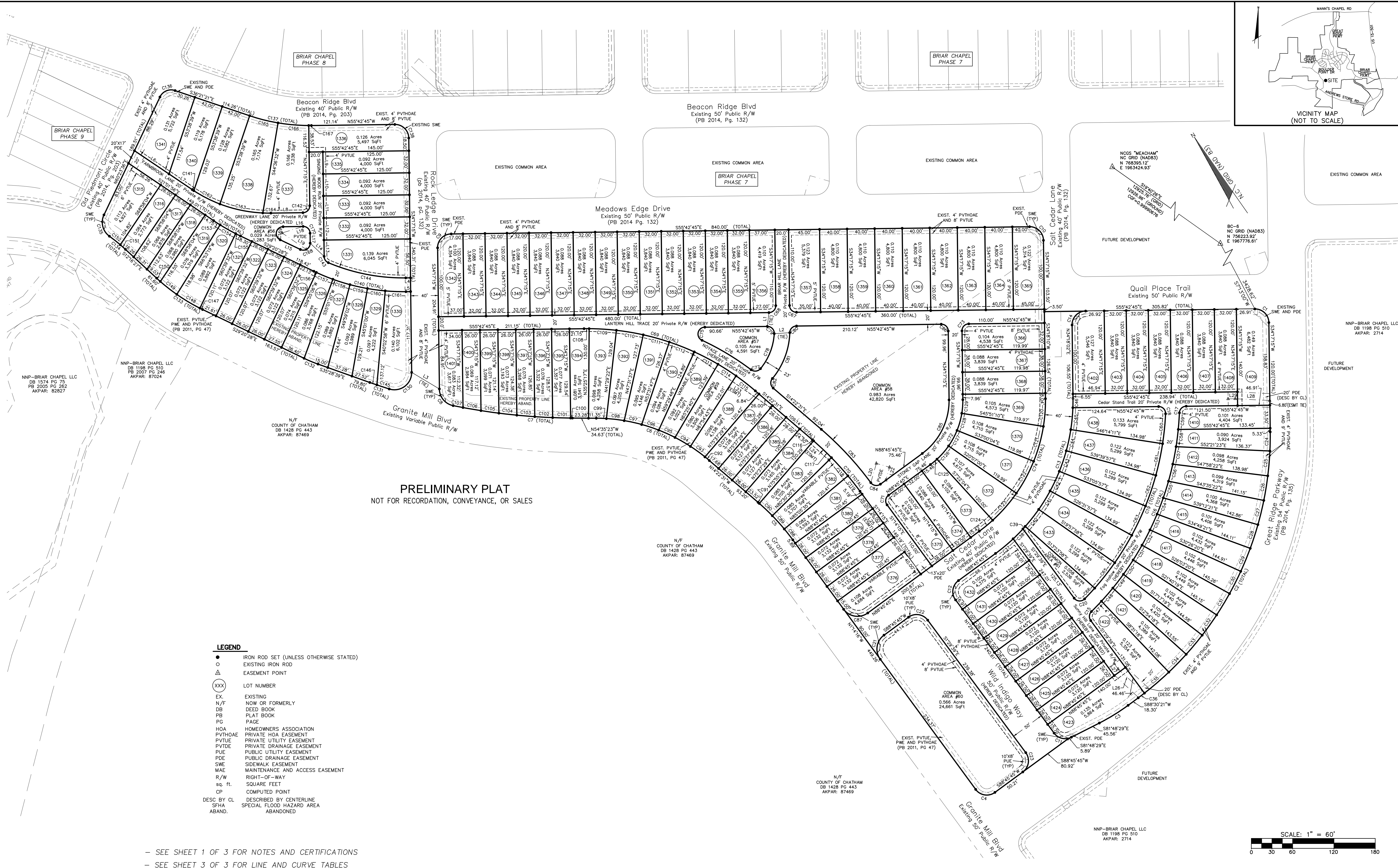
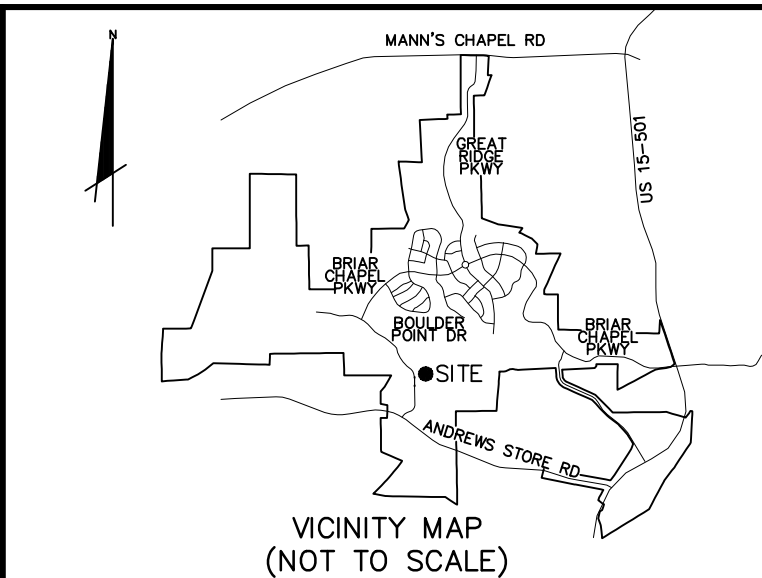
DATE: _____

FINAL SUBDIVISION PLAT, EASEMENT AND RIGHT-OF-WAY DEDICATION
 OF
BRIAR CHAPEL DEVELOPMENT - PHASE 11 NORTH
 FOR
NNP-BRIAR CHAPEL, LLC
 DATE: JUNE 5, 2015 SCALE: 1" = 300'
 BALDWIN TOWNSHIP CHATHAM COUNTY NORTH CAROLINA

PROJECT #: 2735-0109
 PROJ. SVYR: DSC
 DRAWN BY: DSC
 FIELD BK.:
 COMP. FILE: VB101-27350109.dwg
 SHEET #: 1 OF 3
 DWG. #:

- LEGEND**
- IRON ROD SET (UNLESS OTHERWISE STATED)
 - EXISTING IRON ROD
 - △ EASEMENT POINT
 - (XXX) LOT NUMBER
 - EX. EXISTING
 - N/F NOW OR FORMERLY
 - DB DEED BOOK
 - PB PLAT BOOK
 - PG PAGE
 - HOA HOMEOWNERS ASSOCIATION
 - PVTHOAE PRIVATE HOA EASEMENT
 - PVTHUE PRIVATE UTILITY EASEMENT
 - PVTHDE PRIVATE DRAINAGE EASEMENT
 - PUE PUBLIC UTILITY EASEMENT
 - PDE PUBLIC DRAINAGE EASEMENT
 - SWE SIDEWALK EASEMENT
 - MAE MAINTENANCE AND ACCESS EASEMENT
 - R/W RIGHT-OF-WAY
 - sq. ft. SQUARE FEET
 - CP COMPUTED POINT
 - DESC BY CL DESCRIBED BY CENTERLINE
 - SFHA SPECIAL FLOOD HAZARD AREA
 - ABAND. ABANDONED





PRELIMINARY PLAT
NOT FOR RECORDATION, CONVEYANCE, OR SALES

- LEGEND**
- IRON ROD SET (UNLESS OTHERWISE STATED)
 - EXISTING IRON ROD
 - △ EASEMENT POINT
 - XXX LOT NUMBER
 - EX. EXISTING
 - N/F. NOW OR FORMERLY
 - DB. DEED BOOK
 - PB. PLAT BOOK
 - PG. PAGE
 - HOA. HOMEOWNERS ASSOCIATION
 - PVTHOAE. PRIVATE HOA EASEMENT
 - PVTUE. PRIVATE UTILITY EASEMENT
 - PVTDE. PRIVATE DRAINAGE EASEMENT
 - PUE. PUBLIC UTILITY EASEMENT
 - PDE. PUBLIC DRAINAGE EASEMENT
 - SWE. SIDEWALK EASEMENT
 - MAE. MAINTENANCE AND ACCESS EASEMENT
 - R/W. RIGHT-OF-WAY
 - sq. ft. SQUARE FEET
 - CP. COMPUTED POINT
 - DESC BY CL. DESCRIBED BY CENTERLINE
 - SFHA. SPECIAL FLOOD HAZARD AREA
 - ABAND. ABANDONED

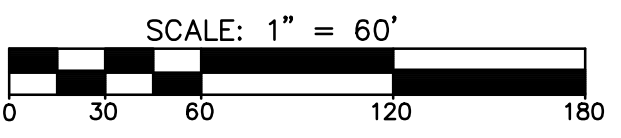
- SEE SHEET 1 OF 3 FOR NOTES AND CERTIFICATIONS
- SEE SHEET 3 OF 3 FOR LINE AND CURVE TABLES

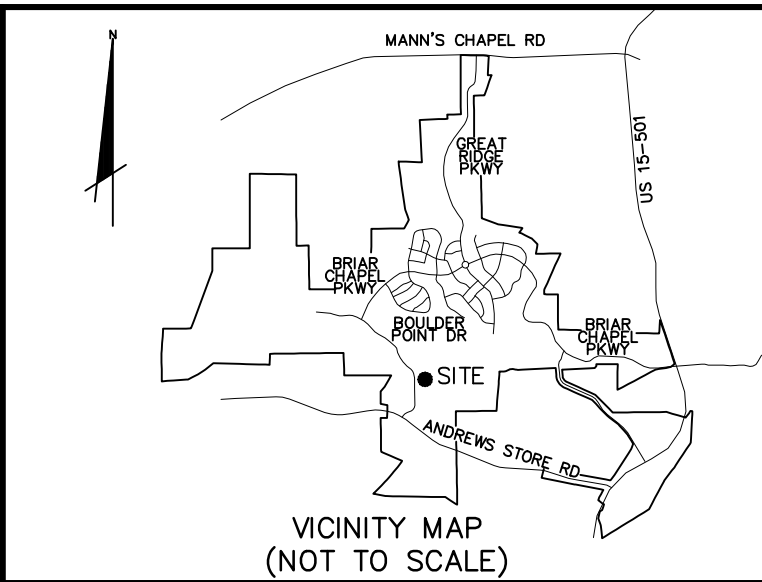
DATE	REVISION	INITIAL

MCKIM & CREED
1730 Varsity Drive Suite 500
Raleigh, North Carolina 27606
Phone: (919)233-8091, Fax: (919)233-8031
NC FIRM # 1222
Internet Site: <http://www.mckimcreed.com>

FINAL SUBDIVISION PLAT, EASEMENT AND RIGHT-OF-WAY DEDICATION
OF
BRIAR CHAPEL DEVELOPMENT - PHASE 11 NORTH
FOR
NNP-BRIAR CHAPEL, LLC
DATE: JUNE 5, 2015 SCALE: 1" = 60'
BALDWIN TOWNSHIP CHATHAM COUNTY NORTH CAROLINA

PROJECT #: 2735-0109
PROJ. SVYR.: DSC
DRAWN BY: DSC
FIELD BK.:
COMP. FILE: VB101-27350109.dwg
SHEET #: 2 OF 3
DWG. #:





Curve Table						
Curve #	Radius	Length	Tangent	Chord Bearing	Ch. Length	Delta
C1	20.00'	31.42'	20.00'	S10°42'45"E	28.28'	090°00'00"
C2	473.00'	447.59'	242.14'	S61°23'48"W	431.08'	054°13'06"
C3	290.50'	49.11'	24.61'	S86°39'04"E	49.05'	009°41'10"
C4	20.00'	31.42'	20.00'	N46°14'16"W	28.28'	089°59'59"
C5	325.00'	74.52'	37.42'	N7°48'24"W	74.36'	013°08'16"
C6	255.00'	178.98'	93.35'	N34°28'57"W	175.33'	040°12'51"
C7	900.00'	174.47'	87.51'	N49°02'10"W	174.20'	011°06'26"
C8	25.00'	33.93'	20.16'	N4°35'51"W	31.39'	077°46'12"
C9	20.00'	31.42'	20.00'	N79°17'15"E	28.28'	090°00'00"
C10	20.00'	31.42'	20.00'	S10°42'45"E	28.28'	090°00'00"
C11	20.00'	28.03'	16.88'	S41°39'04"E	25.80'	080°18'50"
C12	20.00'	31.51'	20.09'	S43°38'03"W	28.35'	090°15'24"
C13	275.00'	261.40'	141.52'	N61°31'53"E	251.67'	054°27'43"
C14	20.00'	31.41'	20.00'	N79°17'39"E	28.28'	089°59'13"
C15	10.00'	14.29'	8.68'	S39°27'27"W	13.11'	081°54'12"
C16	430.00'	323.16'	169.64'	N58°52'45"E	315.61'	043°03'35"
C17	10.00'	15.17'	9.48'	S80°49'07"W	13.76'	086°56'17"
C18	10.00'	16.30'	10.61'	N9°01'42"W	14.55'	093°22'06"
C19	410.00'	300.10'	157.13'	N58°37'28"E	293.44'	041°56'14"
C20	10.00'	17.26'	11.69'	S50°57'02"E	15.20'	098°54'46"
C21	25.00'	39.27'	25.00'	S43°45'44"W	35.36'	090°00'01"
C22	20.00'	31.33'	19.91'	N46°21'57"W	28.22'	089°44'36"
C23	20.00'	31.51'	20.09'	N43°38'03"E	28.35'	090°15'24"
C24	473.00'	27.71'	13.86'	N35°57'56"E	27.70'	003°21'22"
C25	473.00'	36.19'	18.10'	N39°50'08"E	36.18'	004°23'00"
C26	473.00'	36.19'	18.10'	N44°13'08"E	36.18'	004°23'00"
C27	473.00'	36.19'	18.10'	N48°36'09"E	36.18'	004°23'00"
C28	473.00'	36.19'	18.10'	N52°59'09"E	36.18'	004°23'00"
C29	473.00'	36.19'	18.10'	N57°22'10"E	36.18'	004°23'00"
C30	473.00'	36.19'	18.10'	N61°45'10"E	36.18'	004°23'00"
C31	473.00'	36.19'	18.10'	N66°08'10"E	36.18'	004°23'00"
C32	473.00'	36.19'	18.10'	N70°31'11"E	36.18'	004°23'00"
C33	473.00'	36.19'	18.10'	N74°54'11"E	36.18'	004°23'00"
C34	473.00'	36.19'	18.10'	N79°17'12"E	36.18'	004°23'00"
C35	473.00'	46.73'	23.38'	N84°18'31"E	46.71'	005°39'38"
C36	473.00'	11.28'	5.64'	N87°49'20"E	11.28'	001°22'01"
C37	273.75'	33.25'	16.65'	N85°17'36"E	33.23'	006°57'34"
C38	269.32'	20.24'	10.13'	N79°43'15"E	20.24'	004°18'23"
C39	219.23'	4.88'	2.44'	N77°09'59"E	4.88'	001°16'31"
C40	275.00'	31.52'	15.78'	N73°19'02"E	31.50'	006°34'00"
C41	275.00'	31.52'	15.78'	N66°45'02"E	31.50'	006°34'00"
C42	275.00'	31.52'	15.78'	N60°11'03"E	31.50'	006°34'00"
C43	275.00'	31.52'	15.78'	N53°37'03"E	31.50'	006°34'00"
C44	275.00'	31.52'	15.78'	N47°03'03"E	31.50'	006°34'00"
C45	269.84'	31.98'	16.01'	N40°24'03"E	31.96'	006°47'23"
C46	249.01'	13.46'	6.73'	N35°47'15"E	13.46'	003°05'50"
C47	430.00'	20.90'	10.45'	N79°01'00"E	20.90'	002°47'05"
C48	430.00'	25.30'	12.65'	N75°56'19"E	25.30'	003°22'17"
C49	430.00'	25.18'	12.60'	N72°34'30"E	25.18'	003°21'20"
C50	430.00'	25.11'	12.56'	N69°13'28"E	25.10'	003°20'44"
C51	430.00'	25.08'	12.54'	N65°52'52"E	25.07'	003°20'29"
C52	430.00'	25.09'	12.55'	N62°32'20"E	25.08'	003°20'34"
C53	430.00'	25.14'	12.57'	N59°11'33"E	25.14'	003°21'00"
C54	430.00'	25.24'	12.62'	N55°50'10"E	25.23'	003°21'47"
C55	430.00'	25.38'	12.69'	N52°27'50"E	25.37'	003°22'54"
C56	430.00'	25.56'	12.78'	N49°04'13"E	25.56'	003°24'21"
C57	430.00'	25.78'	12.90'	N45°38'58"E	25.78'	003°26'08"
C58	430.00'	25.28'	12.64'	N42°14'50"E	25.28'	003°22'07"
C59	430.00'	24.12'	12.06'	N38°57'22"E	24.11'	003°12'49"
C60	410.00'	43.71'	21.87'	N40°42'35"E	43.69'	006°06'28"

Curve Table						
Curve #	Radius	Length	Tangent	Chord Bearing	Ch. Length	Delta
C61	410.00'	47.00'	23.52'	N47°02'51"E	46.97'	006°34'04"
C62	410.00'	46.99'	23.52'	N53°36'53"E	46.96'	006°33'59"
C63	410.00'	46.99'	23.52'	N60°10'52"E	46.96'	006°33'59"
C64	410.00'	46.99'	23.52'	N66°44'51"E	46.96'	006°33'59"
C65	410.00'	46.99'	23.52'	N73°18'50"E	46.96'	006°33'59"
C66	410.00'	21.44'	10.72'	N78°05'42"E	21.44'	002°59'46"
C67	10.00'	15.71'	10.00'	S10°42'45"E	14.14'	090°00'00"
C68	10.00'	15.71'	10.00'	N79°17'15"E	14.14'	090°00'00"
C69	375.00'	270.55'	141.47'	N35°02'38"W	264.72'	041°20'13"
C70	445.00'	102.04'	51.24'	N7°48'23"W	101.81'	013°08'16"
C71	10.00'	15.71'	10.00'	S43°45'45"W	14.14'	090°00'00"
C72	115.00'	109.34'	59.20'	N61°31'30"E	105.27'	054°28'30"
C73	10.00'	15.71'	10.00'	S79°17'15"W	14.14'	090°00'00"
C74	235.00'	223.38'	120.93'	N61°31'53"E	215.06'	054°27'43"
C75	10.00'	26.93'	43.87'	S47°07'38"W	19.50'	154°19'15"
C76	395.00'	83.17'	41.74'	N24°00'05"W	83.01'	012°03'49"
C77	10.00'	15.25'	9.55'	S61°39'42"E	13.82'	087°23'03"
C78	87.50'	55.48'	28.71'	N56°28'55"E	54.56'	036°19'43"
C79	10.00'	16.41'	10.73'	N8°41'50"W	14.63'	094°01'49"
C80	10.00'	15.25'	9.56'	S80°35'18"W	13.82'	087°23'54"
C81	110.00'	72.42'	37.58'	N55°45'03"E	71.12'	037°43'24"
C82	10.00'	15.53'	9.82'	S30°07'07"W	14.02'	088°59'16"
C83	465.00'	105.83'	53.15'	N75°11'19"W	105.61'	013°02'26"
C84	10.00'	15.69'	9.98'	S46°17'10"E	14.13'	089°54'10"
C85	95.00'	90.32'	48.90'	N61°31'30"E	86.96'	054°28'30"
C86	10.00'	15.71'	10.00'	N10°42'45"W	14.14'	090°00'00"
C87	25.00'	39.27'	25.00'	S46°14'16"E	35.36'	089°59'59"
C88	325.00'	20.09'	10.05'	N3°00'31"W	20.09'	003°32'30"
C89	325.00'	25.98'	13.00'	N7°04'10"W	25.97'	004°34'46"
C90	325.00'	25.98'	13.00'	N11°38'58"W	25.97'	004°34'50"
C91	325.00'	2.47'	1.24'	N14°09'27"W	2.47'	000°26'09"
C92	255.00'	8.33'	4.16'	N15°18'39"W	8.33'	001°52'15"
C93	255.00'	26.00'	13.01'	N19°10'02"W	25.99'	005°50'31"
C94	255.00'	25.94'	12.98'	N25°00'07"W	25.93'	005°49'40"
C95	255.00'	26.01'	13.02'	N30°50'17"W	26.00'	005°50'40"
C96	247.14'	26.01'	13.02'	N36°44'39"W	26.00'	006°01'50"
C97	244.57'	26.01'	13.02'	N42°27'57"W	26.00'	006°05'38"
C98	255.00'	26.02'	13.02'	N48°22'22"W	26.01'	005°50'46"
C99	255.00'	14.66'	7.33'	N52°56'34"W	14.66'	003°17'38"
C100	900.00'	2.72'	1.36'	S54°30'11"E	2.72'	000°10'24"
C101	900.00'	26.02'	13.01'	S53°35'17"E	26.02'	001°39'23"
C102	900.00'	26.06'	13.03'	S51°55'50"E	26.06'	001°39'32"
C103	900.00'	26.12'	13.06'	S50°16'11"E	26.12'	001°39'46"
C104	900.00'	26.20'	13.10'	S48°36'15"E	26.20'	001°40'05"
C105	900.00'	26.31'	13.16'	S46°55'58"E	26.31'	001°40'30"
C106	900.00'	26.44'	13.22'	S45°15'13"E	26.44'	001°41'00"
C107	900.00'	14.60'	7.30'	S43°56'50"E	14.60'	000°55'47"
C108	375.00'	7.42'	3.71'	N55°08'44"W	7.42'	001°08'02"
C109	375.00'	39.72'	19.88'	N51°32'40"W	39.70'	006°04'06"
C110	375.00'	39.52'	19.78'	N45°29'30"W	39.50'	006°02'15"
C111	375.00'	39.29'	19.66'	N39°28'18"W	39.27'	006°00'09"
C112	375.00'	39.05'	19.54'	N33°29'13"W	39.04'	005°58'01"
C113	375.00'	38.82'	19.43'	N27°32'16"W	38.80'	005°55'52"
C114	375.00'	31.25'	15.63'	N22°11'06"W	31.24'	004°46'28"
C115	375.00'	35.49'	17.76'	N17°05'12"W	35.48'	005°25'20"
C116	445.00'	2.32'	1.16'	N14°13'34"W	2.32'	000°17'56"
C117	445.00'	35.61'	17.81'	N11°47'03"W	35.60'	004°35'06"
C118	445.00'	35.61'	17.81'	N7°11'57"W	35.60'	004°35'06"
C119	445.00'	28.50'	14.25'	N3°04'20"W	28.49'	003°40'09"
C120	235.00'	40.40'	20.25'	N39°13'34"E	40.35'	009°51'04"

Curve Table						
Curve #	Radius	Length	Tangent	Chord Bearing	Ch. Length	Delta
C121	235.00'	52.71'	26.47'	N50°34'40"E	52.60'	012°51'09"
C122	235.00'	52.79'	26.50'	N63°26'20"E	52.67'	012°52'11"
C123	235.00'	52.29'	26.25'	N76°14'53"E	52.18'	012°44'55"
C124	235.00'	25.18'	12.60'	N85°41'33"E	25.17'	006°08'24"
C125	115.00'	12.30'	6.16'	N85°41'50"E	12.30'	006°07'49"
C126	115.00'	25.59'	12.85'	N76°15'28"E	25.54'	012°44'57"
C127	115.00'	25.80'	12.96'	N63°27'18"E	25.75'	012°51'22"
C128	115.00'	25.80'	12.96'	N50°35'56"E	25.75'	012°51'22"
C129	115.00'	19.84'	9.94'	N39°13'45"E	19.81'	009°53'00"
C130	25.00'	47.27'	34.63'	N88°27'31"E	40.54'	108°20'33"
C131	900.00'	29.73'	14.87'	S36°25'25"E	29.73'	001°53'34"
C132	205.00'	21.95'	10.99'	S32°24'34"E	21.94'	006°08'10"
C133	278.49'	81.10'	40.84'	S20°40'15"E	80.82'	016°41'10"
C134	255.00'	30.11'	15.07'	N15°39'25"W	30.09'	006°45'56"
C135	25.00'	34.66'	20.77'	S20°40'36"W	31.95'	079°25'58"
C136	18.00'	26.15'	16.00'	N77°58'53"W	23.91'	083°15'03"
C137	270.00'	91.22'	46.05'	S46°02'03"E	90.78'	019°21'24"
C138	20.00'	31.42'	20.00'	N10°42'45"W	28.28'	090°00'00"
C139	310.00'	44.96'	22.52'	S25°11'12"E	44.92'	008°18'32"
C140	300.00'	138.08'	70.29'	S42°31'37"E	136.86'	026°22'17"
C141	200.00'	2.82'	1.41'	S12°26'08"E	2.82'	000°48'24"
C142	10.00'	15.71'	10.00'	N79°17'15"E	14.14'	090°00'00"
C143	10.00'	11.59'	6.54'	S1°05'40"W	10.95'	066°23'09"
C144	280.00'	115.40'	58.53'	S43°54'20"E	114.59'	023°36'51"
C145	900.00'	18.89'	9.44'	S36°46'08"E	18.89'	001°12'08"
C146	900.00'	10.84'	5.42'	S35°49'21"E	10.84'	000°41'25"
C147	278.49'	4.39'	2.19'	S28°33'45"E	4.39'	000°54'09"
C148	278.49'					