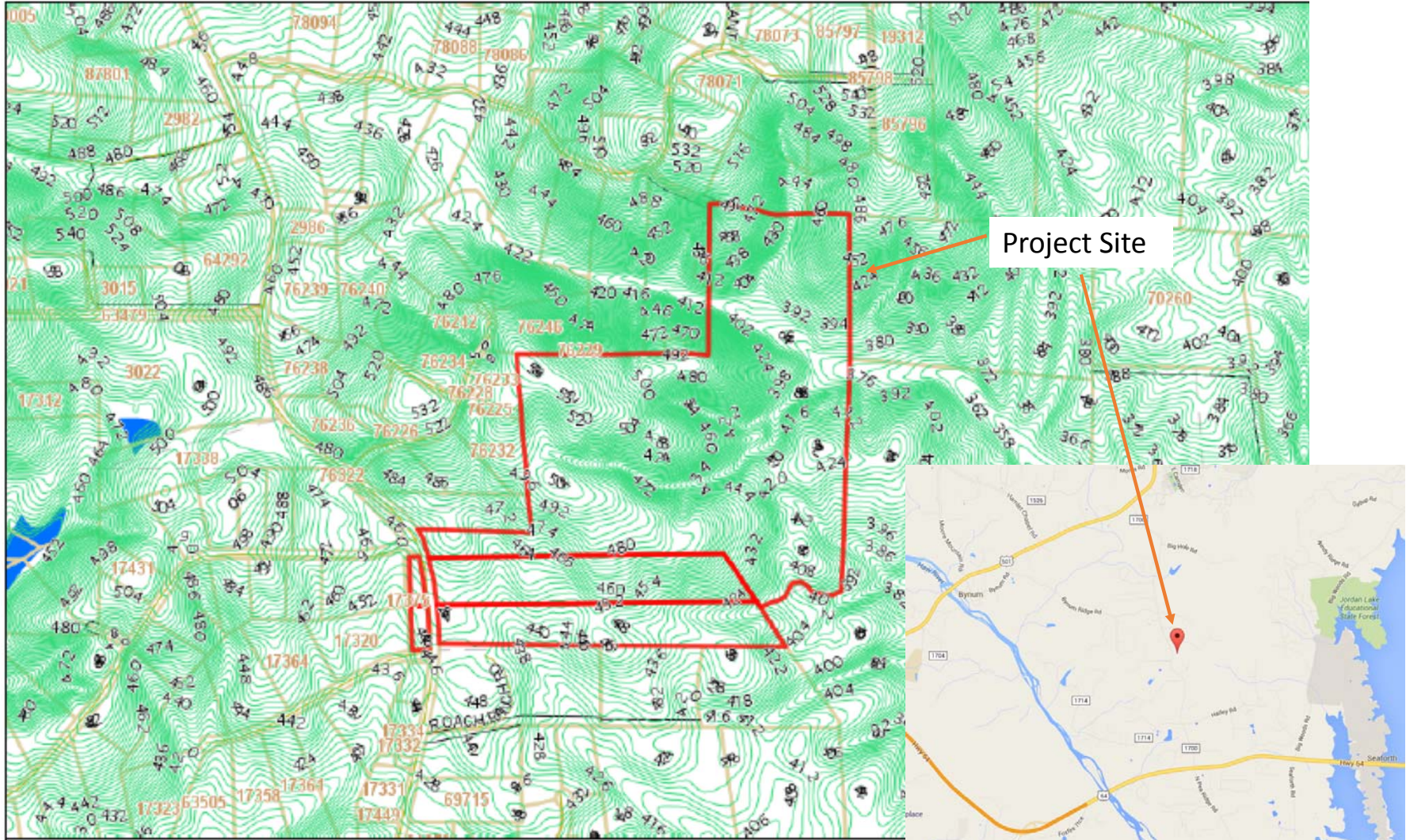
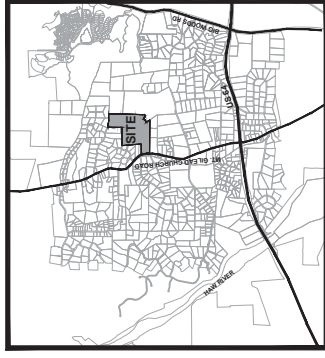
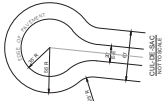


APPENDIX 1
SITE VICINITY MAP



Sunset Grove, Pittsboro, NC Chatham County GIS Topography (2' Contours) & Vicinity Map

APPENDIX 2
PRELIMINARY SITE PLANS



VICINITY MAP
N.T.S.
NORTH

SUNSET GROVE FORMERLY COPPER RIDGE FIRST PLAT EXHIBIT

CHATHAM COUNTY, NC
6/5/2015
AKPAR: 17425, 17440, 17441

SITE DATA:	
PIN:	9773-60-6882 9772-59-2771 9772-59-4420
SITE AREA:	± 107.82 AC.
TOTAL LOTS:	± 55 LOTS
AVERAGE LOT SIZE:	± 1.7 AC.
LENGTH OF ROADS:	± 7,200 LF
* COUNTY WATER TO BE PROVIDED	

- DAW — EXISTING WATERLINE
- PROPOSED WATERLINE
- APPROXIMATE STREAM BUFFERS
- CONVENTIONAL SOILS (GREATER THAN 24')
- SURFACE DRIP SOILS (12' TO 24')
- EXISTING CEMETERY
- PROPOSED WATER QUALITY POND
- SUB-SURFACE DRIP SOILS (LESS THAN 12')



GENERAL NOTE:

1. A BOUNDARY SURVEY HAS NOT BEEN PERFORMED.



IMPERVIOUS CALCULATIONS

Roadway	159,500 sf	
Residential	412,500 sf	7500 sf/lot
Misc	10,000 sf	
	<hr/>	
	582,000 sf	
	or	
	13.36 ac	

Total Impervious Area =

13.36 ac.

Total Project Area =

107.80 ac.

Overall Project Impervious % =

12.4%

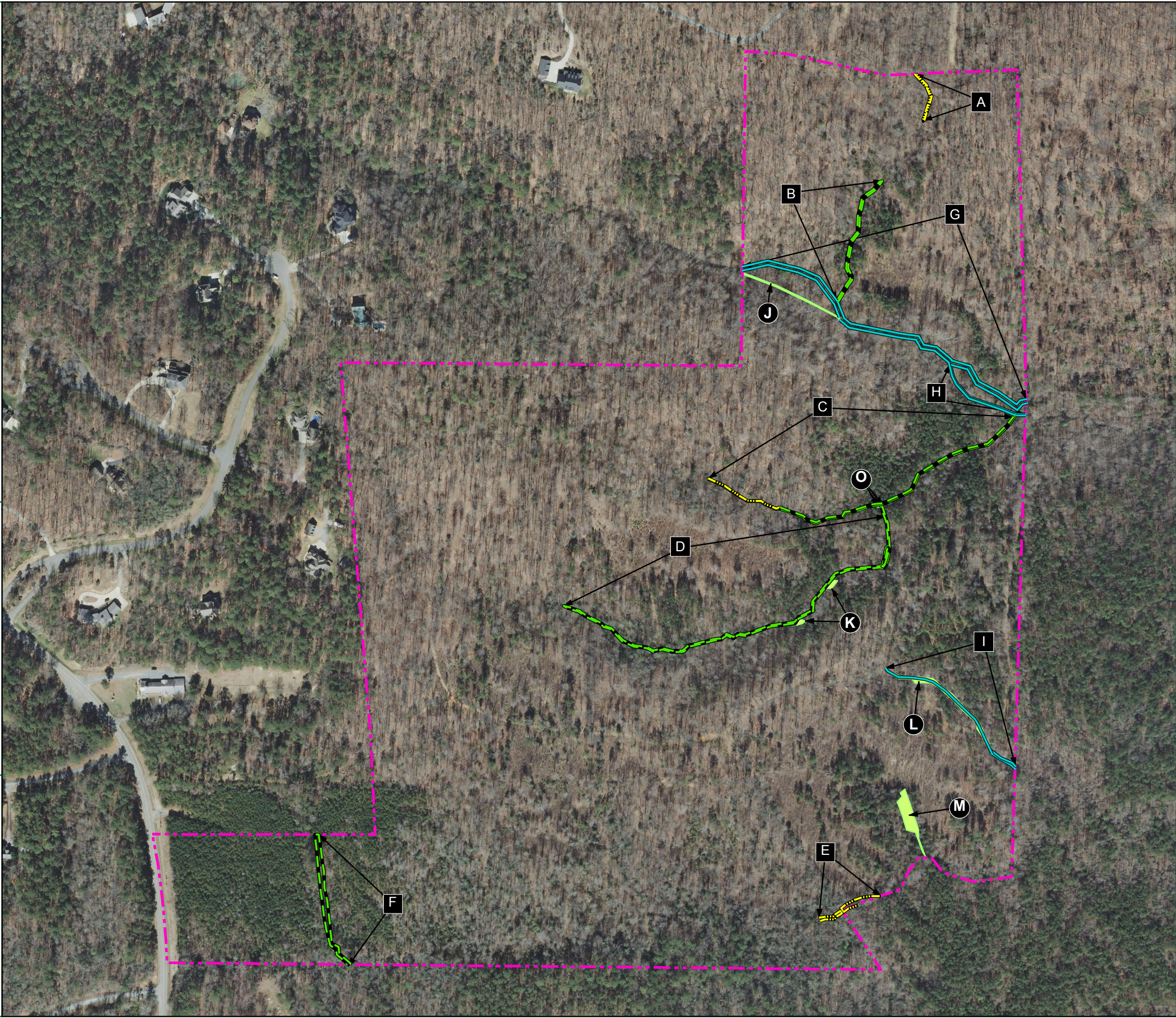
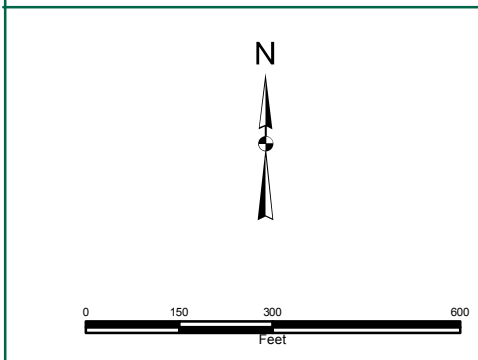
LD

APPENDIX 6
SURFACE WATER RESOURCE MAPS

Resource Identification	Classification							Resource Description Notes*
	PFO (ft²)	PSS (ft²)	PEM (ft²)	POW (ft²)	R3 (L.F.)	R4 (L.F.)	R6 (L.F.)	
A							166	NT/NV
B						426		NT/NV
C						855	245	NT/NV
D						1,400		NT/NV
E							166	NT/NV
F						429		NT/NV
G								NT/NV
H						1,048		NT/NV
I						291		NT/NV
J	1,336					536		NT/NV
K	858							NT/V
L	4,194							NT/V
M	4,394							NT/V
O	106							NT/V
Total	10,890	0	0	0	1,875	3,110	576	0
Total Wetland Area =	10,890		ft²		0.25 Acres			
Total Stream Length =	5,561		L.F.					

- Legend**
- Parcel Limits - 107.8 acres
 - Perennial Stream (R3)
 - Intermittent Stream (R4)
 - Ephemeral Stream (R6)
 - Wetlands

- NOTES:**
1. WATERS OF THE U.S. WITHIN THE PROJECT STUDY LIMITS HAVE BEEN GPS LOCATED BY TIMMONS GROUP.
 2. WATERS OF THE U.S. HAVE NOT BEEN CONFIRMED BY THE U.S. ARMY CORPS OF ENGINEERS.
 3. PROJECT STUDY LIMITS ARE APPROXIMATE.
 4. IMAGERY FROM ESRI ONLINE.
 5. COWARDIN STREAM CLASSIFICATIONS ARE BASED SOLELY ON FIELD OBSERVATIONS. NO FORMAL STREAM ASSESSMENT METHODOLOGY WAS COMPLETED TO DETERMINE THESE COWARDIN CLASSIFICATIONS.



Path: Y:\06\36673-Sunset_Grove\GIS\Wetland Delineation\Wetland Delineation Map.mxd

TIMMONS GROUP

SUNSET GROVE
CHATHAM COUNTY, NORTH CAROLINA

FIGURE 4: DRAFT PRELIMINARY JURISDICTIONAL WATERS OF THE U.S. DELINEATION MAP

THIS DRAWING PREPARED AT THE
CORPORATE OFFICE
1001 Boulders Parkway, Suite 300 | Richmond, VA 23225
TEL 804.200.6500 FAX 804.560.7648 www.timmons.com

YOUR VISION ACHIEVED THROUGH OURS

Site Development | Residential | Infrastructure | Technology | Environmental

REVISION DESCRIPTION

DATE

11/16/2015

DRAWN BY
B. NORRIS

DESIGNED BY
B. NORRIS

CHECKED BY
S. MITCHELL

SCALE
1" = 300'

JOB NUMBER
36673

SHEET NO.
1 OF 1

These plans and associated documents are the exclusive property of TIMMONS GROUP and may not be reproduced in whole or in part and shall not be used for any purpose whatsoever, inclusive, but not limited to construction, bidding, and/or construction staking without the express written consent of TIMMONS GROUP.