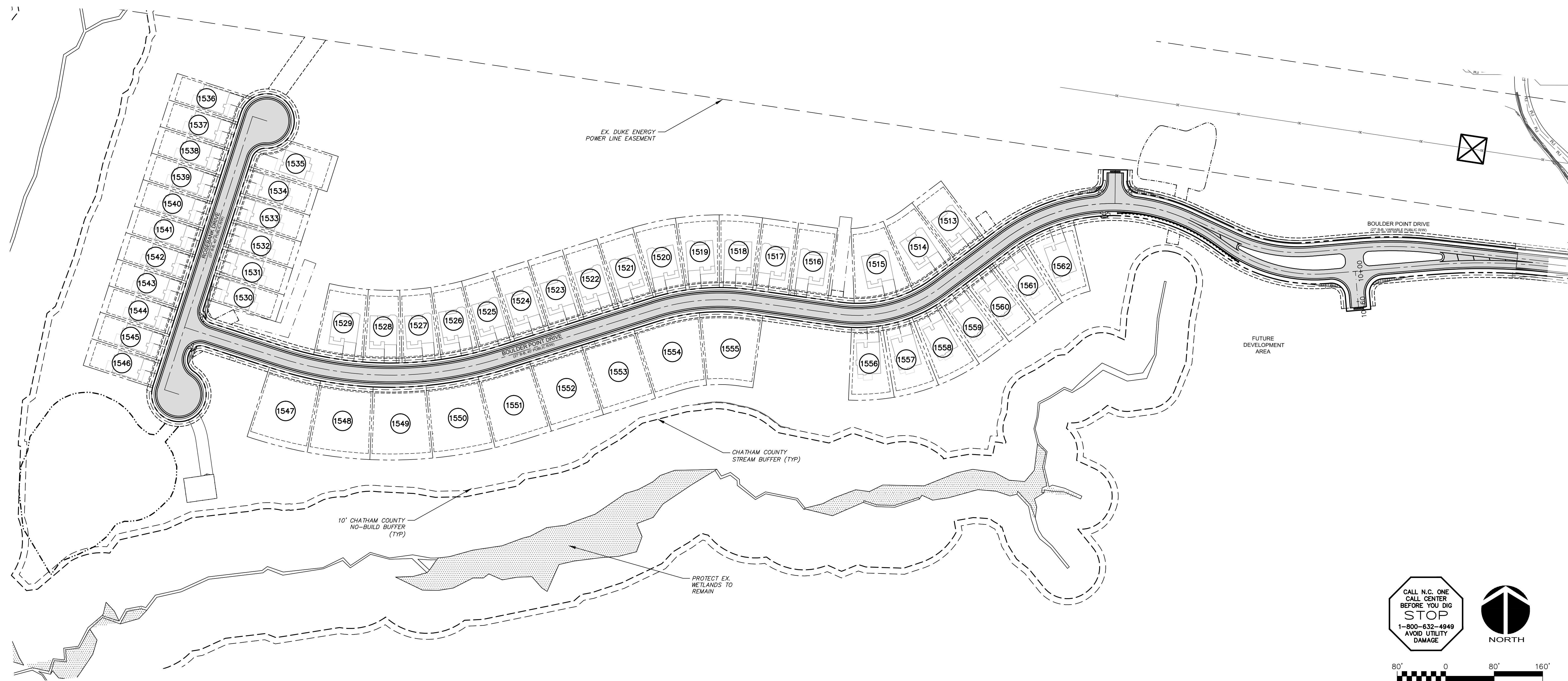
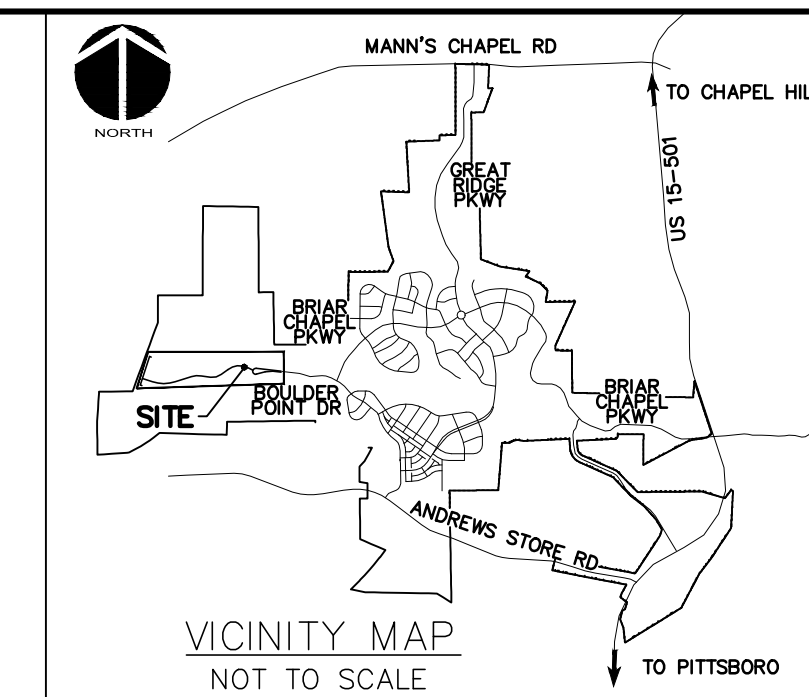


LEGEND:

- R/W LINE
- FUTURE R/W LINE
- EXISTING R/W LINE
- HOA EASEMENT LINE
- PUBLIC UTILITY EASEMENT LINE
- PUBLIC DRAINAGE EASEMENT
- EXISTING POWER LINE EASEMENT
- OVERHEAD POWER LINE
- 10' NO BUILD BUFFER LINE
- RIPARIAN BUFFER LINE
- BMP MAINTENANCE & ACCESS EASEMENT
- ROADWAY CENTERLINE

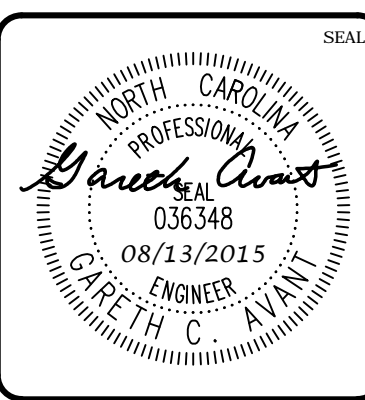
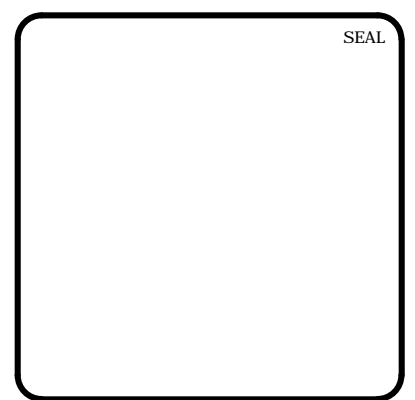


CALL N.C. ONE CALL CENTER BEFORE YOU DIG
STOP
 1-800-632-4949
 AVOID UTILITY DAMAGE

NORTH

80' 0 80' 160'
 SCALE: 1"=80' (Horiz.)

REV. NO.	DESCRIPTIONS	DATE
2	REVISED PER COMMENTS FROM NCDOT	2015.08.13
1	ISSUED FOR PERMITTING	2015.06.17



MCKIM & CREED

1730 Varsity Drive, Suite 500
 Raleigh, North Carolina 27606
 Phone: (919)233-8091, Fax: (919)233-8031
 F-1222
www.mckimcreed.com

BRIAR CHAPEL™

by
Newland COMMUNITIES

**BRIAR CHAPEL
 PHASE 15 NORTH
 CHATHAM COUNTY, NORTH CAROLINA**

OVERALL SITE PLAN

DATE: JUNE 17, 2015	SCALE: N/A	MSC FILE NUMBER: C1.X
MCE PROJ. # 02735-0113	HORIZONTAL: AS NOTED	DRAWING NUMBER: C1.0
DRAWN: BSS	VERTICAL: N/A	
DESIGNED: BSS		
CHECKED: GCA		
PROJ. MGR.: CHS		
STATUS: FINAL DRAWINGS FOR REVIEW PURPOSES ONLY	REVISION: 2	