

**CERTIFICATION OF OWNERSHIP AND DEDICATION**

I (WE) HEREBY CERTIFY THAT I AM (WE ARE) THE OWNER(S) OF THE PROPERTY SHOWN AND DESCRIBED HEREON AND THAT I (WE) HEREBY ADOPT THIS PLAN OF SUBDIVISION WITH MY (OUR) FREE CONSENT, AND DEDICATE ALL RIGHT-OF-WAYS, STREETS, ALLEYS, WALKS, EASEMENTS, PARKS, AND OTHER OPEN SPACES TO PUBLIC OR PRIVATE USE AS NOTED.

OWNERS OR AUTHORIZED AGENT \_\_\_\_\_ DATE \_\_\_\_\_

**REVIEW OFFICER CERTIFICATION**

STATE OF NORTH CAROLINA, COUNTY OF CHATHAM

I, \_\_\_\_\_ REVIEW OFFICER FOR CHATHAM COUNTY, CERTIFY THAT THE MAP OR PLAT TO WHICH THIS CERTIFICATION IS AFFIXED MEETS ALL STATUTORY REQUIREMENTS FOR RECORDING.

REVIEW OFFICER \_\_\_\_\_ DATE \_\_\_\_\_

BY \_\_\_\_\_ TITLE \_\_\_\_\_

**CERTIFICATE OF APPROVAL FOR RECORDING**

I HEREBY CERTIFY THAT THE SUBDIVISION PLAT SHOWN HEREON HAS BEEN FOUND TO COMPLY WITH THE SUBDIVISION REGULATIONS FOR CHATHAM COUNTY, WITH THE EXCEPTION OF SUCH VARIANCES, IF ANY, AS NOTED IN THE MINUTES OF THE BOARD OF COMMISSIONERS, AND THAT IT HAS BEEN APPROVED BY THE BODY FOR RECORDING IN THE OFFICE OF THE COUNTY REGISTER OF DEEDS.

DATE \_\_\_\_\_

CHAIRMAN, CHATHAM COUNTY BOARD OF COMMISSIONERS \_\_\_\_\_

**CERTIFICATION OF THE APPROVAL OF UTILITIES**

I HEREBY CERTIFY THAT THE \_\_\_\_\_ IMPROVEMENTS HAVE BEEN INSTALLED IN AN ACCEPTABLE MANNER AND ACCORDING TO THE SPECIFICATIONS OF THE CHATHAM COUNTY UTILITY POLICY AND/OR THE CHATHAM COUNTY SUBDIVISION REGULATIONS, EXCEPT AS NOTED HEREON; OR PROPER PROVISIONS HAVE BEEN MADE FOR THEIR INSTALLATION.

DATE \_\_\_\_\_

SIGNATURE \_\_\_\_\_ TITLE \_\_\_\_\_

BY NNP-BRIAR CHAPEL, LLC

DEPARTMENT OF TRANSPORTATION  
DIVISION OF HIGHWAYS

PROPOSED SUBDIVISION ROAD  
CONSTRUCTION STANDARDS CERTIFICATION

APPROVED \_\_\_\_\_ DISTRICT ENGINEER \_\_\_\_\_

DATE \_\_\_\_\_

**SURVEY NOTES:**

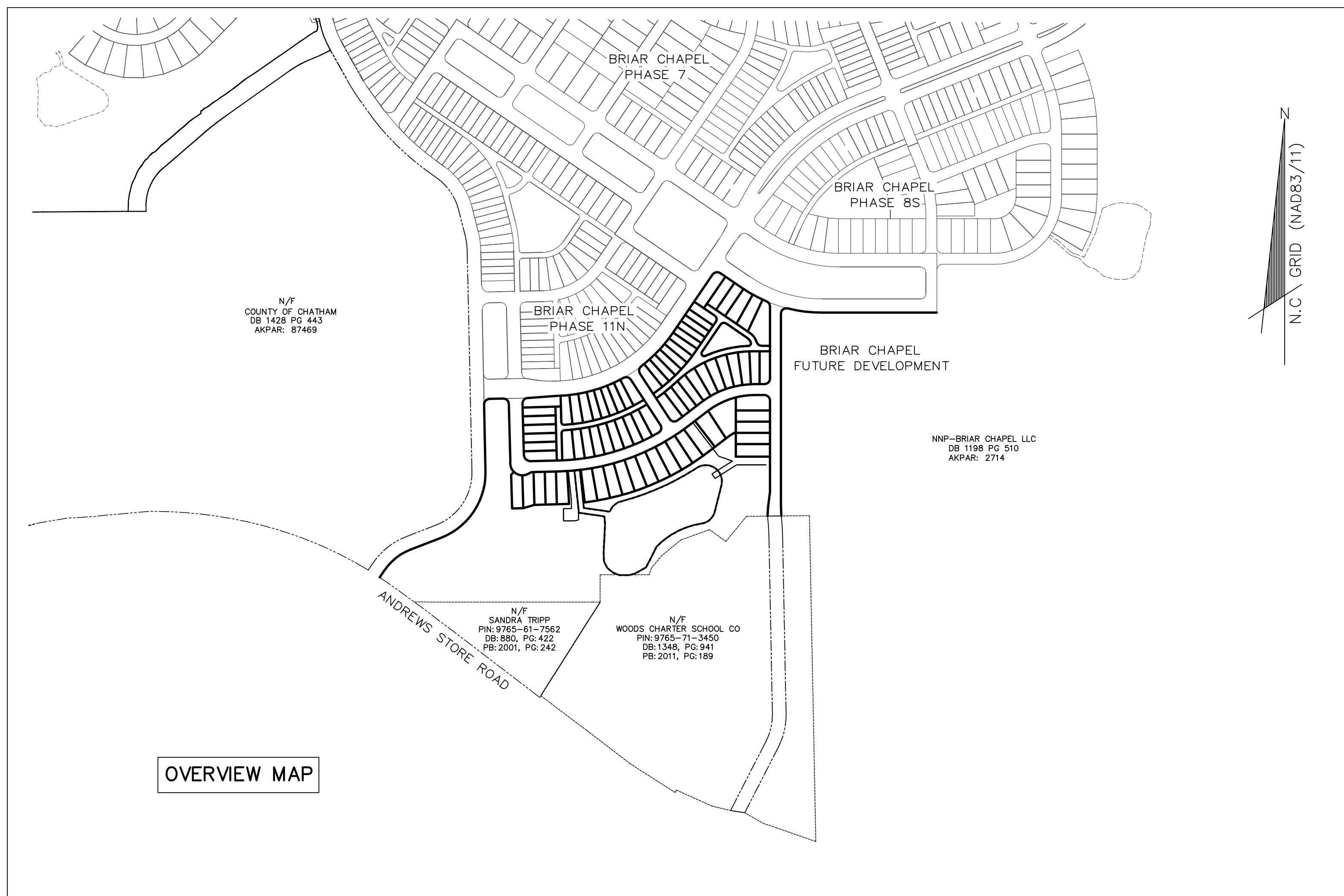
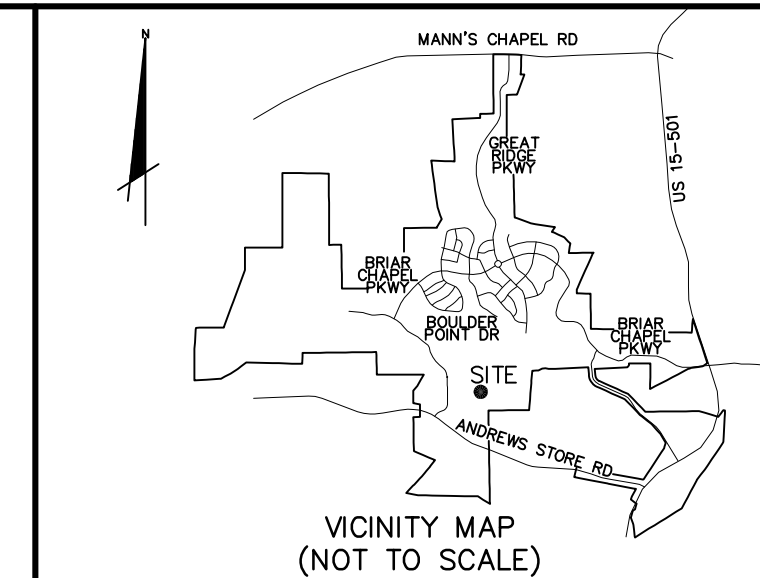
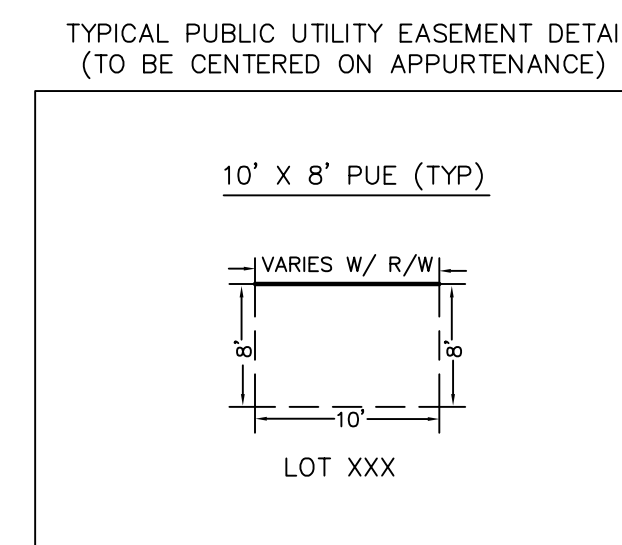
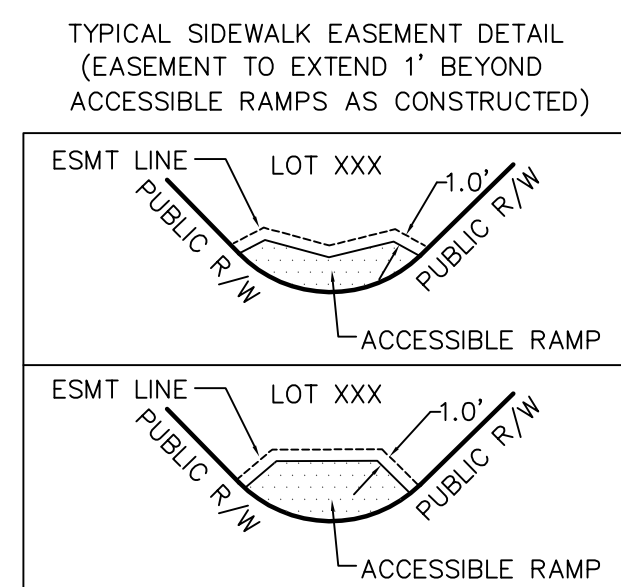
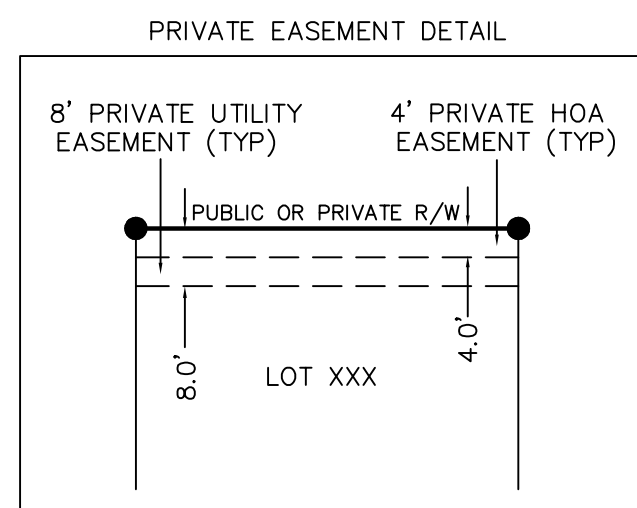
- ALL DISTANCES SHOWN ARE HORIZONTAL GROUND DISTANCES IN U.S. SURVEY FEET (UNLESS OTHERWISE STATED).
- NO NC GRID MONUMENT IS WITHIN 2,000' OF SURVEYED TRACT.
- ALL BEARINGS ARE BASED ON THE NORTH CAROLINA STATE PLANE COORDINATE SYSTEM (NAD 1983/NSRS 2007).
- THIS SURVEY PERFORMED AND MAP PREPARED WITHOUT THE BENEFIT OF A TITLE REPORT. THIS SURVEY IS SUBJECT TO ANY FACTS AND EASEMENTS WHICH MAY BE DISCLOSED BY A FULL AND ACCURATE TITLE SEARCH.
- SEE SHEET 3 OF 3 FOR LINE AND CURVE TABLE DATA.
- THIS PROPERTY IS NOT LOCATED IN A SPECIAL FLOOD HAZARD AREA. IT IS LOCATED IN ZONE "X", AS SHOWN ON FEMA FIRM MAP PANEL #3710978500J WITH AN EFFECTIVE DATE OF FEBRUARY 2, 2007.
- PROJECT AREA INCLUDES PORTIONS OF PARCELS AKPAR 87090, 2714 AND 87024. COMPLETE BOUNDARY SURVEYS OF THESE PARCELS WERE NOT PERFORMED IN THE COURSE OF THIS SURVEY. AREA CALCULATIONS FOR THESE PARCELS ARE BASED ON CHATHAM COUNTY GIS PARCEL DATA.
- THE LINES SHOWN TO PUBLIC AND PRIVATE DRAINAGE EASEMENTS ARE CHORD DISTANCES.
- SIDEWALK EASEMENTS (SWE) SHOWN WILL BE BOUNDED BY PUBLIC RIGHT-OF-WAY AND BY LINES ONE FOOT BEYOND THE ACCESSIBLE RAMPS AS CONSTRUCTED.

**ADDITIONAL NOTES:**

- ALL LOTS SHOWN HEREON WILL BE CONVEYED SUBJECT TO RESTRICTIONS, CONDITIONS, COVENANTS AND PROVISIONS FOR SETBACKS, USE MAINTENANCE, EASEMENTS, ASSESSMENTS AND OTHER MATTERS CONTAINED IN THE DECLARATION OF COVENANTS, CONDITIONS AND RESTRICTIONS FOR BRIAR CHAPEL, RECORDED AT BOOK 1370, PAGE 1020, AND RE-RECORDED AT BOOK 1372, PAGE 884, AS AMENDED AND SUPPLEMENTED (THE "DECLARATION").
- THE DESIGNATIONS AND CONDITIONS OF USAGE OF COMMON AREA/OPEN SPACE ARE AS SET FORTH IN THE DECLARATION.
- MINIMUM SETBACKS FOR IMPROVEMENTS ON LOTS SHALL BE ESTABLISHED BY THE DECLARATION, THE DECLARANT (OR ITS DESIGNEE) UNDER THE DECLARATION, OR ANY DESIGN GUIDELINES ADOPTED PURSUANT TO THE DECLARATION.
- LIGHTING SHALL CONFORM WITH THE CHATHAM COUNTY LIGHTING ORDINANCE.
- THE 4' OR 5' PRIVATE HOA EASEMENTS SHOWN HEREON MAY BE EXERCISED BY NNP-BRIAR CHAPEL, LLC AND/OR BRIAR CHAPEL COMMUNITY ASSOCIATION, INC. FOR THE PURPOSE OF INSTALLATION, MAINTENANCE, REPAIR AND REPLACEMENT OF STREET TREES AND LANDSCAPING AND FOR SUCH PURPOSES AS AUTHORIZED UNDER ARTICLE XI OF THE DECLARATION.
- IN ADDITION TO ANY AND ALL EASEMENTS RESERVED OR GRANTED IN THE DECLARATION, DECLARANT RESERVES FOR ITSELF AND GRANTS TO THE ASSOCIATION (AS DEFINED IN THE DECLARATION) AND ALL UTILITY PROVIDERS (AS DEFINED IN THE DECLARATION), PERPETUAL, NON-EXCLUSIVE 4', 5', 6', 8', 9' AND 10' EASEMENTS (AS APPLICABLE) FOR ALL UTILITIES PURPOSES INCLUDED IN THE DECLARATION, INCLUDING, WITHOUT RESERVATION, THE PURPOSES OF ACCESS AND INSTALLING, INSPECTING, MAINTAINING, REPAIRING AND REPLACING UTILITIES ALONG ALL LOT FRONTAGE ON PUBLIC AND PRIVATE RIGHTS-OF-WAY. SEE INSET.
- THE EASEMENTS DESCRIBED ON THIS PLAT ARE IN ADDITION TO AND NOT IN LIMITATION OF ANY EASEMENTS DESCRIBED IN THE DECLARATION.

**RIGHT-OF-WAY MAINTENANCE RESPONSIBILITY NOTE:**

- MAINTENANCE OF PUBLIC R/W TO BE THE RESPONSIBILITY OF THE DEVELOPER AND/OR BRIAR CHAPEL COMMUNITY ASSOCIATION, INC. UNTIL SUCH TIME THAT THEY ARE ACCEPTED BY NCDOT.
- MAINTENANCE OF ALLEYWAYS, SHOWN HEREON AS PRIVATE R/W, TO BE THE RESPONSIBILITY OF THE DEVELOPER AND/OR BRIAR CHAPEL COMMUNITY ASSOCIATION, INC.



I, DAVID S. CLARK, PLS. L-4729, CERTIFY THAT THIS PLAT WAS DRAWN UNDER MY SUPERVISION FROM AN ACTUAL SURVEY MADE UNDER MY SUPERVISION FROM INFORMATION SHOWN IN DEED BOOKS REFERENCED ON MAP AND MAP BOOKS REFERENCED ON MAP; THAT ANY LINES NOT ACTUALLY SURVEYED APPEAR AS BROKEN LINES AND WERE PLOTTED FROM INFORMATION AS NOTED ON THE PLAT; THAT THE RATIO OF PRECISION AS CALCULATED IS BETTER THAN 1:10,000; THAT THE AREA IS COMPUTED BY COORDINATE METHOD; THAT THIS PLAT WAS PREPARED IN ACCORDANCE WITH G.S. 47-30 AS AMENDED. WITNESS MY ORIGINAL SIGNATURE, REGISTRATION NUMBER, AND SEAL THIS THE \_\_\_\_\_ DAY OF \_\_\_\_\_ A.D., 2015.

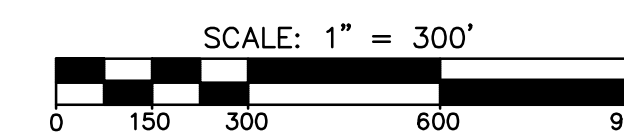
DAVID S. CLARK L-4729  
PROFESSIONAL LAND SURVEYOR

I, DAVID S. CLARK, PLS. L-4729, CERTIFY THAT THE SURVEY CREATES A SUBDIVISION OF LAND WITHIN THE AREA OF A COUNTY OR MUNICIPALITY THAT HAS AN ORDINANCE THAT REGULATES PARCELS OF LAND.

DATE \_\_\_\_\_

**PRELIMINARY PLAT**  
NOT FOR RECORDATION, CONVEYANCE, OR SALES

- LEGEND**
- IRON ROD SET (UNLESS OTHERWISE STATED)
  - EXISTING IRON ROD
  - △ EASEMENT POINT
  - (XXX) LOT NUMBER
  - EX. EXISTING
  - N/F NOW OR FORMERLY
  - DB DEED BOOK
  - PB PLAT BOOK
  - PG PAGE
  - HOA HOMEOWNERS ASSOCIATION
  - PVTHOAE PRIVATE HOA EASEMENT
  - PVTHUE PRIVATE UTILITY EASEMENT
  - PVTHDE PRIVATE DRAINAGE EASEMENT
  - PUE PUBLIC UTILITY EASEMENT
  - PDE PUBLIC DRAINAGE EASEMENT
  - SWE SIDEWALK EASEMENT
  - MAE MAINTENANCE AND ACCESS EASEMENT
  - R/W RIGHT-OF-WAY
  - sq. ft. SQUARE FEET
  - CP COMPUTED POINT
  - DESC BY CL DESCRIBED BY CENTERLINE
  - SFHA SPECIAL FLOOD HAZARD AREA
  - ABAND. ABANDONED



**OWNER INFORMATION:**

NNP-BRIAR CHAPEL, LLC  
16 WINDY KNOLL CIRCLE  
CHAPEL HILL, NC 27516  
PHONE: (919) 951-0700  
FAX: (919) 240-4963  
CONTACT: BILL MUMFORD, P.E.

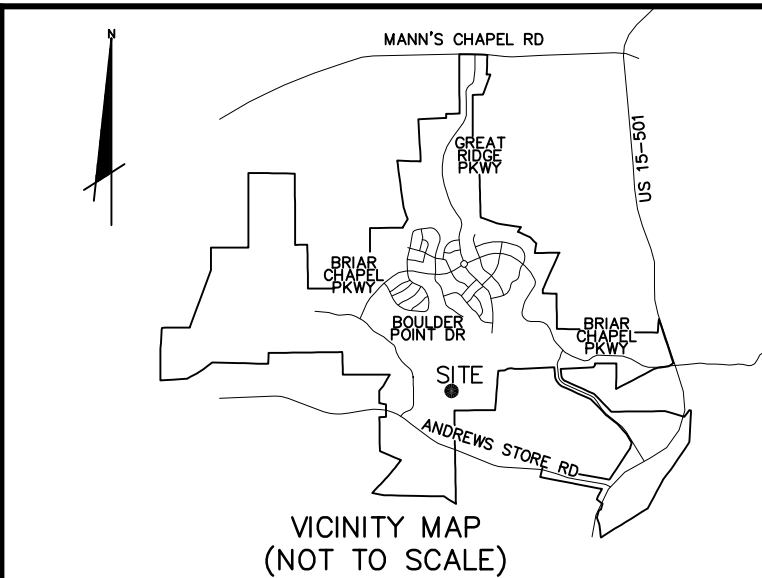
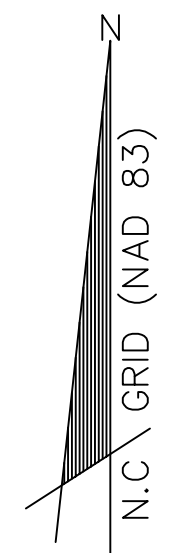
DATE	REVISION	INITIAL

**MCKIM & CREED**  
1730 Varsity Drive Suite 500  
Raleigh, North Carolina 27606  
Phone: (919)233-8091, Fax: (919)233-8031  
NC FIRM # 1222  
Internet Site: <http://www.mckimcreed.com>

DATE: \_\_\_\_\_

FINAL SUBDIVISION PLAT, EASEMENT AND RIGHT-OF-WAY DEDICATION  
OF  
**BRIAR CHAPEL DEVELOPMENT - PHASE 11 SOUTH**  
FOR  
**NNP-BRIAR CHAPEL, LLC**  
DATE: SEPTEMBER 09, 2015 SCALE: 1" = 300'  
BALDWIN TOWNSHIP CHATHAM COUNTY NORTH CAROLINA

PROJECT #: 2735-0109  
PROJ. SVYR: DSC  
DRAWN BY: JRC  
FIELD BK.:  
COMP. FILE: VB101-27350109.dwg  
SHEET #: 1 OF 3  
DWG. #:



NCOS "MEACHAM"  
NC GRID (NAD83)  
N 768395.12'  
E 1963424.93'

BC-6  
NC GRID (NAD83)  
N 756223.92'  
E 1967776.61'

BRIAR CHAPEL  
PHASE 11 NORTH

GRANITE MILL BLVD.  
EXISTING 50' PUBLIC R/W

WILD INDIGO WAY  
40' PUBLIC R/W (HEREBY DEDICATED)

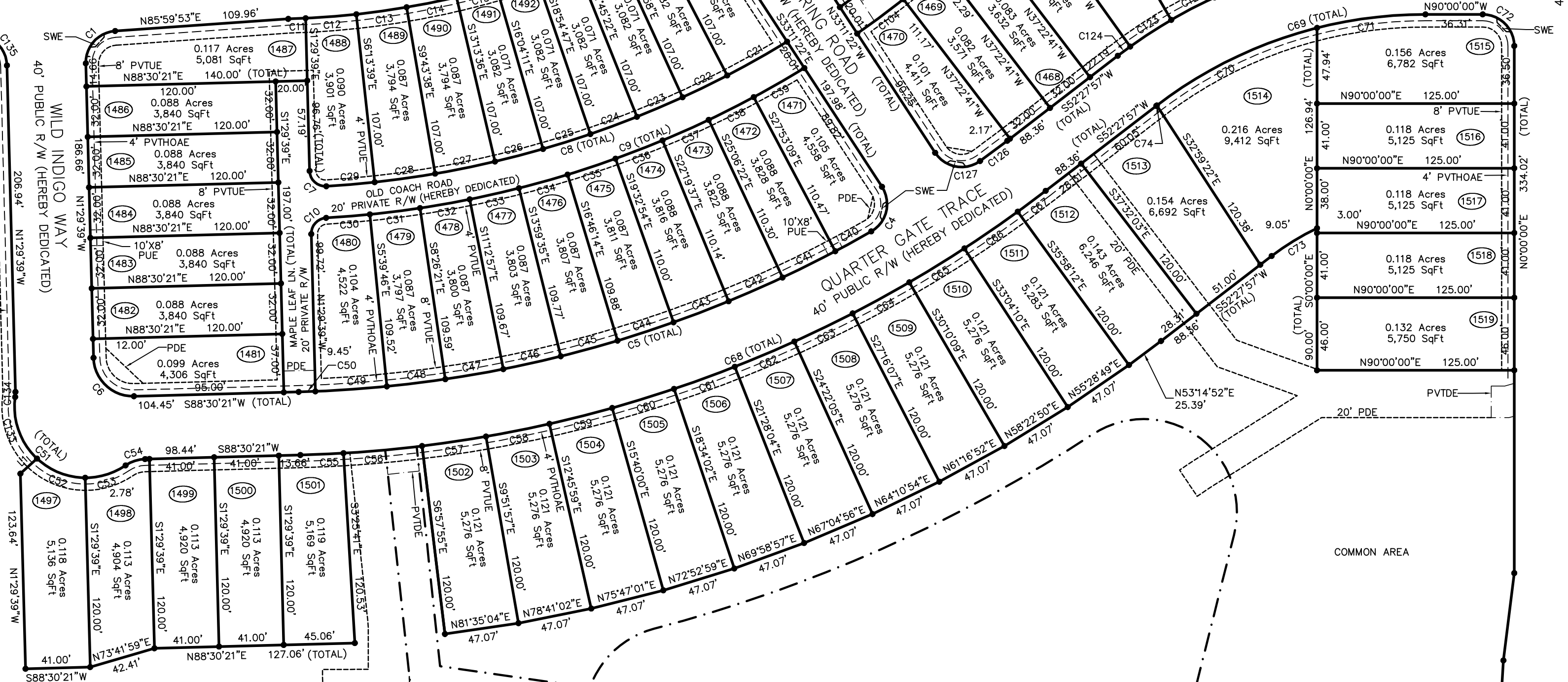
Great Ridge Parkway  
Existing 54' Public R/W  
(Pb 2014, p. 35)

OLD SPRING ROAD  
40' PUBLIC R/W (HEREBY DEDICATED)

QUARTER GATE TRACE  
40' PUBLIC R/W (HEREBY DEDICATED)

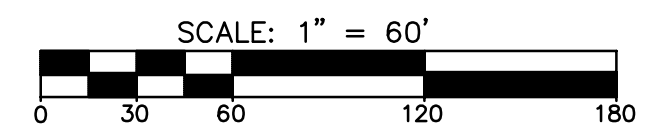
WOODLAND GROVE LANE  
40' PUBLIC R/W (HEREBY DEDICATED)

CARDINAL RIDGE ROAD  
EXISTING 50' PUBLIC R/W



**PRELIMINARY PLAT**  
NOT FOR RECORDATION, CONVEYANCE, OR SALES

- LEGEND**
- IRON ROD SET (UNLESS OTHERWISE STATED)
  - EXISTING IRON ROD
  - △ EASEMENT POINT
  - (XXX) LOT NUMBER
  - EX. EXISTING
  - N/F NOW OR FORMERLY
  - DB DEED BOOK
  - PB PLAT BOOK
  - PG PAGE
  - HOA HOMEOWNERS ASSOCIATION
  - PVTHOAE PRIVATE HOA EASEMENT
  - PVUIE PRIVATE UTILITY EASEMENT
  - PVDEE PRIVATE DRAINAGE EASEMENT
  - PUE PUBLIC UTILITY EASEMENT
  - PDE PUBLIC DRAINAGE EASEMENT
  - SWE SIDEWALK EASEMENT
  - MAE MAINTENANCE AND ACCESS EASEMENT
  - R/W RIGHT-OF-WAY
  - sq. ft. SQUARE FEET
  - CP COMPUTED POINT
  - DESC BY CL DESCRIBED BY CENTERLINE
  - SFHA SPECIAL FLOOD HAZARD AREA
  - ABAND. ABANDONED



- SEE SHEET 1 OF 3 FOR NOTES AND CERTIFICATIONS  
- SEE SHEET 3 OF 3 FOR LINE AND CURVE TABLES

N/F  
SANDRA TRIPP  
PIN: 9765-61-7562  
DB: 880, PG: 422  
PB: 2001, PG: 242

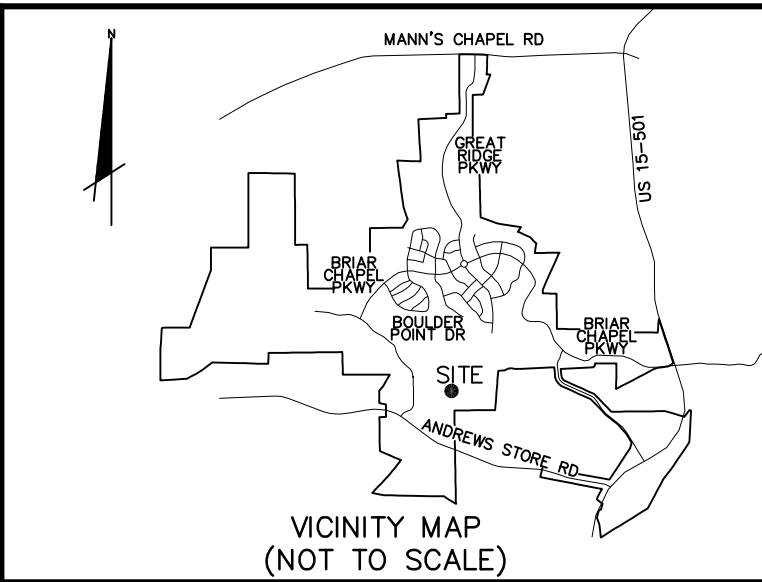
DATE	REVISION	INITIAL

**MCKIM & CREED**  
1730 Varsity Drive Suite 500  
Raleigh, North Carolina 27606  
Phone: (919)233-8091, Fax: (919)233-8031  
NC FIRM # 1222  
Internet Site: <http://www.mckimcreed.com>

DATE: \_\_\_\_\_

FINAL SUBDIVISION PLAT, EASEMENT AND RIGHT-OF-WAY DEDICATION  
OF  
**BRIAR CHAPEL DEVELOPMENT - PHASE 11 SOUTH**  
FOR  
**NNP-BRIAR CHAPEL, LLC**  
DATE: SEPTEMBER 09, 2015 SCALE: 1" = 60'  
BALDWIN TOWNSHIP CHATHAM COUNTY NORTH CAROLINA

PROJECT #: 2735-0109  
PROJ. SVYR: DSC  
DRAWN BY: JRC  
FIELD BK.:  
COMP. FILE: VB102-27350109.dwg  
SHEET #: 2 OF 3  
DWG. #:



Curve Table						
Curve #	Radius	Length	Tangent	Chord Bearing	Ch. Length	Delta
C90	20.00'	23.41'	13.26'	N33°32'18"W	22.10'	067°04'35"
C125	20.00'	31.42'	20.00'	N45°00'00"E	28.28'	090°00'00"
C116	320.00'	209.63'	108.73'	S71°13'58"W	205.90'	037°32'03"
C126	770.00'	21.48'	10.74'	N53°15'54"E	21.48'	001°35'54"
C127	20.00'	32.37'	20.98'	S79°33'46"E	28.95'	092°44'47"
C75	20.00'	29.95'	18.59'	S9°42'49"W	27.23'	085°48'23"
C102	654.00'	98.21'	49.20'	N50°45'21"E	98.12'	008°36'16"
C103	400.00'	304.01'	159.77'	S68°13'36"W	296.75'	043°32'47"
C93	15.00'	23.56'	15.00'	N10°42'45"W	21.21'	090°00'00"
C94	634.00'	229.22'	115.88'	N44°38'42"E	227.98'	020°42'55"
C92	60.00'	40.63'	21.13'	N36°18'55"W	39.85'	038°47'41"
C91	20.00'	25.51'	14.82'	S53°27'32"E	23.82'	073°04'56"
C131	420.00'	162.82'	82.44'	S76°58'17"W	161.80'	022°12'41"
C130	10.00'	19.87'	15.35'	N31°09'31"E	16.76'	113°50'12"
C129	40.00'	20.91'	10.70'	N40°44'10"W	20.67'	029°57'11"
C128	15.00'	23.56'	15.00'	S79°17'15"W	21.21'	090°00'00"
C132	10.00'	25.90'	35.36'	S39°55'24"E	19.25'	148°25'18"
C3	20.00'	29.95'	18.59'	N76°05'34"W	27.23'	085°48'23"
C4	20.00'	32.59'	21.21'	N13°29'40"E	29.10'	093°22'06"
C5	770.00'	380.69'	194.32'	N74°20'32"E	376.82'	028°19'38"

Curve Table						
Curve #	Radius	Length	Tangent	Chord Bearing	Ch. Length	Delta
C6	25.00'	39.27'	25.00'	S46°29'39"E	35.36'	090°00'00"
C1	20.00'	30.54'	19.14'	S42°15'07"W	27.66'	087°29'33"
C7	10.00'	16.05'	10.35'	S47°28'17"E	14.38'	091°57'17"
C8	634.00'	309.09'	157.68'	N72°35'05"E	306.04'	027°55'59"
C10	10.00'	15.39'	9.68'	S42°35'15"W	13.91'	088°09'47"
C9	654.00'	320.82'	163.70'	N72°36'57"E	317.61'	028°06'22"
C72	20.00'	31.42'	20.00'	N45°00'00"W	28.28'	090°00'00"
C69	280.00'	183.43'	95.14'	S71°13'58"W	180.16'	037°32'03"
C68	810.00'	509.50'	263.50'	N70°29'09"E	501.15'	036°02'24"
C54	23.00'	13.18'	6.77'	S72°05'35"W	13.00'	032°49'32"
C51	45.00'	103.79'	101.42'	S58°14'51"E	82.27'	132°08'40"
C134	20.00'	20.00'	3.25'	N3°09'55"E	3.25'	009°19'08"
C135	20.00'	31.33'	19.91'	N46°21'57"W	28.22'	089°44'36"
C73	160.00'	33.81'	16.97'	S58°31'12"W	33.75'	012°06'31"
C76	527.00'	168.59'	85.02'	N43°27'08"E	167.87'	018°19'46"
C85	523.50'	103.83'	52.09'	S61°23'40"E	103.66'	0112°15'00"
C84	20.24'	31.36'	19.81'	S79°33'10"W	28.32'	088°46'36"
C138	205.00'	124.01'	63.97'	N51°30'13"E	122.13'	034°39'39"
C137	255.00'	311.87'	178.79'	N33°47'54"E	292.79'	070°04'22"
C136	20.00'	31.42'	20.00'	S43°45'44"W	28.28'	090°00'01"

Curve Table						
Curve #	Radius	Length	Tangent	Chord Bearing	Ch. Length	Delta
C2	527.00'	252.69'	128.82'	N74°44'26"E	250.28'	027°28'23"
C11	527.00'	11.02'	5.51'	N87°52'41"E	11.02'	001°11'53"
C12	527.00'	32.25'	16.13'	N85°31'33"E	32.25'	003°30'24"
C13	527.00'	32.19'	16.10'	N82°01'22"E	32.18'	003°29'58"
C14	527.00'	32.19'	16.10'	N78°31'23"E	32.18'	003°29'58"
C15	527.00'	26.15'	13.08'	N75°21'06"E	26.15'	002°50'36"
C16	527.00'	26.15'	13.08'	N72°30'31"E	26.15'	002°50'36"
C17	527.00'	26.15'	13.08'	N69°39'55"E	26.15'	002°50'36"
C18	527.00'	26.15'	13.08'	N66°49'20"E	26.15'	002°50'36"
C19	527.00'	26.15'	13.08'	N63°58'44"E	26.15'	002°50'36"
C20	527.00'	13.89'	6.95'	N61°48'08"E	13.89'	001°30'37"
C40	770.00'	26.01'	13.01'	N61°08'47"E	26.01'	001°56'08"
C41	770.00'	37.36'	18.68'	N63°30'14"E	37.35'	002°46'47"
C42	770.00'	37.35'	18.68'	N66°17'00"E	37.35'	002°46'45"
C43	770.00'	37.34'	18.67'	N69°03'44"E	37.34'	002°46'43"
C44	770.00'	37.33'	18.67'	N71°50'26"E	37.33'	002°46'41"
C45	770.00'	37.33'	18.67'	N74°37'06"E	37.32'	002°46'39"
C46	770.00'	37.32'	18.66'	N77°23'44"E	37.32'	002°46'37"
C47	770.00'	37.32'	18.66'	N80°10'21"E	37.31'	002°46'36"
C48	770.00'	37.31'	18.66'	N82°56'56"E	37.31'	002°46'35"

Curve Table						
Curve #	Radius	Length	Tangent	Chord Bearing	Ch. Length	Delta
C49	770.00'	45.47'	22.74'	N86°01'44"E	45.46'	003°23'01"
C50	770.00'	10.55'	5.28'	N88°06'47"E	10.55'	000°47'07"
C30	654.00'	27.82'	13.91'	N85°27'01"E	27.82'	002°26'15"
C31	654.00'	32.00'	16.00'	N82°49'47"E	32.00'	002°48'13"
C32	654.00'	32.00'	16.00'	N80°01'33"E	32.00'	002°48'13"
C33	654.00'	32.00'	16.00'	N77°13'20"E	32.00'	002°48'13"
C34	654.00'	32.00'	16.00'	N74°25'06"E	32.00'	002°48'13"
C35	654.00'	32.00'	16.00'	N71°36'53"E	32.00'	002°48'13"
C36	654.00'	32.00'	16.00'	N68°48'39"E	32.00'	002°48'13"
C37	654.00'	32.00'	16.00'	N66°00'26"E	32.00'	002°48'13"
C38	654.00'	32.00'	16.00'	N63°12'12"E	32.00'	002°48'13"
C39	654.00'	36.97'	18.49'	N60°10'56"E	36.96'	003°14'19"
C21	634.00'	43.59'	21.80'	N60°35'16"E	43.58'	003°56'21"
C22	634.00'	31.46'	15.73'	N63°58'44"E	31.46'	002°50'36"
C23	634.00'	31.46'	15.73'	N66°49'20"E	31.46'	002°50'36"
C24	634.00'	31.46'	15.73'	N69°39'55"E	31.46'	002°50'36"
C25	634.00'	31.46'	15.73'	N72°30'31"E	31.46'	002°50'36"
C26	634.00'	31.46'	15.73'	N75°21'06"E	31.46'	002°50'36"
C27	634.00'	38.72'	19.37'	N78°31'23"E	38.72'	003°29'58"
C28	634.00'	38.72'	19.37'	N82°01'22"E	38.72'	003°29'58"

Curve Table						
Curve #	Radius	Length	Tangent	Chord Bearing	Ch. Length	Delta
C29	634.00'	30.75'	15.38'	N85°09'43"E	30.74'	002°46'44"
C52	45.00'	33.69'	17.68'	S68°19'10"E	32.91'	042°53'26"
C53	45.00'	27.14'	14.00'	N72°57'28"E	26.73'	034°33'18"
C55	810.00'	27.34'	13.67'	N87°32'20"E	27.34'	001°56'02"
C56	810.00'	50.01'	25.01'	N84°48'12"E	50.00'	003°32'14"
C57	810.00'	41.00'	20.51'	N81°35'04"E	41.00'	002°54'02"
C58	810.00'	41.00'	20.51'	N78°41'02"E	41.00'	002°54'02"
C59	810.00'	41.00'	20.51'	N75°47'01"E	41.00'	002°54'02"
C60	810.00'	41.00'	20.51'	N72°52'59"E	41.00'	002°54'02"
C61	810.00'	41.00'	20.51'	N69°58'57"E	41.00'	002°54'02"
C62	810.00'	41.00'	20.51'	N67°04'56"E	41.00'	002°54'02"
C63	810.00'	41.00'	20.51'	N64°10'54"E	41.00'	002°54'02"
C64	810.00'	41.00'	20.51'	N61°16'52"E	41.00'	002°54'02"
C65	810.00'	41.00'	20.51'	N58°22'50"E	41.00'	002°54'02"
C66	810.00'	41.00'	20.51'	N55°28'49"E	41.00'	002°54'02"
C67	810.00'	22.11'	11.06'	N53°14'52"E	22.11'	001°33'51"
C70	280.00'	113.54'	57.56'	S64°10'55"W	112.76'	023°30'58"
C71	280.00'	69.40'	34.88'	S82°53'57"W	69.23'	0141°2'06"
C74	280.00'	0.49'	0.24'	S52°30'56"W	0.49'	000°05'59"
C77	527.00'	13.74'	6.87'	N51°52'13"E	13.74'	001°29'36"

Curve Table						
Curve #	Radius	Length	Tangent	Chord Bearing	Ch. Length	Delta
C78	527.00'	26.15'	13.08'	N49°42'07"E	26.15'	002°50'36"
C79	527.00'	26.15'	13.08'	N46°51'31"E	26.15'	002°50'36"
C80	527.00'	26.15'	13.08'	N44°00'56"E	26.15'	002°50'36"
C81	527.00'	26.15'	13.08'	N41°10'20"E	26.15'	002°50'36"
C82	527.00'	26.15'	13.08'	N38°19'45"E	26.15'	002°50'36"
C83	528.01'	24.10'	12.05'	N35°35'51"E	24.10'	002°36'54"
C86	523.50'	23.67'	11.84'	S57°00'29"E	23.67'	002°35'28"
C87	523.50'	32.10'	16.05'	S60°03'36"E	32.09'	003°30'47"
C88	523.50'	31.82'	15.91'	S63°33'28"E	31.81'	003°28'57"
C89	523.50'	16.24'	8.12'	S66°11'16"E	16.24'	001°46'39"
C95	634.00'	28.99'	14.50'	N35°35'51"E	28.99'	002°37'12"
C96	634.00'	31.46'	15.73'	N38°19'45"E	31.46'	002°50'36"
C97	634.00'	31.46'	15.73'	N41°10'20"E	31.46'	002°50'36"
C98	634.00'	31.46'	15.73'	N44°00'56"E	31.46'	002°50'36"
C99	634.00'	31.46'	15.73'	N46°51'31"E	31.46'	002°50'36"
C100	634.00'	31.46'	15.73'	N49°42'07"E	31.46'	002°50'36"
C101	634.00'	42.92'	21.47'	N53°03'47"E	42.92'	003°52'45"
C104	648.35'	36.51'	18.26'	N53°27'31"E	36.51'	003°13'36"
C105	654.00'	32.03'	16.02'	N50°27'23"E	32.02'	002°48'21"
C106	654.00'	29.68'	14.84'	N47°45'13"E	29.67'	002°36'00"

Curve Table						
Curve #	Radius	Length	Tangent	Chord Bearing	Ch. Length	Delta
C107	400.00'	2.45'	1.22'	S46°37'44"W	2.45'	000°21'02"
C108	400.00'	35.63'	17.83'	S49°21'22"W	35.62'	005°06'14"
C109	400.00'	42.18'	21.11'	S54°55'43"W	42.16'	006°02'30"
C110	400.00'	42.59'	21.31'	S60°59'59"W	42.57'	006°06'01"
C111	400.00'	42.67'	21.36'	S67°06'21"W	42.65'	006°06'43"
C112	400.00'	42.72'	21.38'	S73°13'16"W	42.70'	006°07'07"
C113	400.00'	42.73'	21.38'	S79°20'26"W	42.71'	006°07'13"
C114	400.00'	42.70'	21.37'	S85°27'32"W	42.68'	006°06'59"
C115	400.00'	10.35'	5.18'	S89°15'31"W	10.35'	001°28'59"
C117	320.00'	13.74'	6.87'	S88°46'10"W	13.74'	002°27'39"
C118	320.00'	31.01'	15.52'	S84°45'46"W	31.00'	005°33'10"
C119	320.00'	31.01'	15.52'	S79°12'36"W	31.00'	005°33'10"
C120	320.00'	31.01'	15.52'	S73°39'26"W	31.00'	005°33'10"
C121	320.00'	31.01'	15.52'	S68°06'16"W	31.00'	005°33'10"
C122	320.00'	31.01'	15.52'	S62°33'07"W	31.00'	005°33'10"
C123	320.00'	31.01'	15.52'	S56°59'57"W	31.00'	005°33'10"
C124	320.00'	9.81'	4.91'	S53°20'39"W	9.81'	001°45'25"
C133	45.00'	42.96'	23.28'	S19°31'29"E	41.35'	054°41'57"

Line Table		
Line #	Direction	Length
L1	N47°36'59"E	14.22'
L2	S90°00'00"E	64.86'