

Pittsboro

Cary / Apex

PROPOSED 8' WATERLINE

US HWY 64

Existing 60' wide approved access (ex. fence break)

Proposed deceleration lane

Existing 60' wide approved access (ex. fence break)

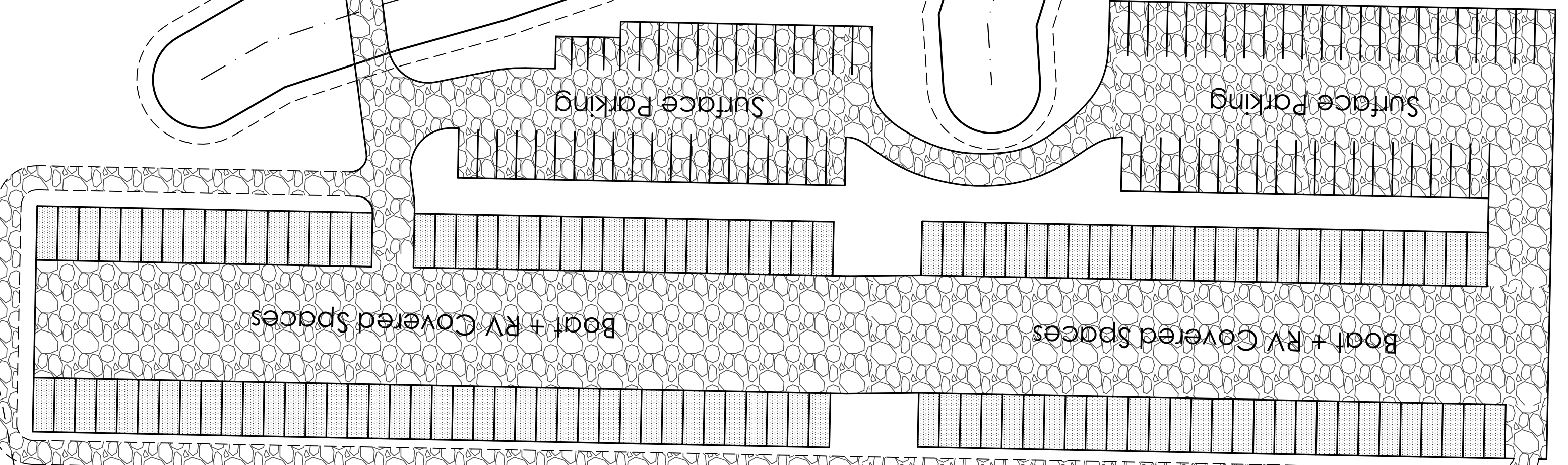
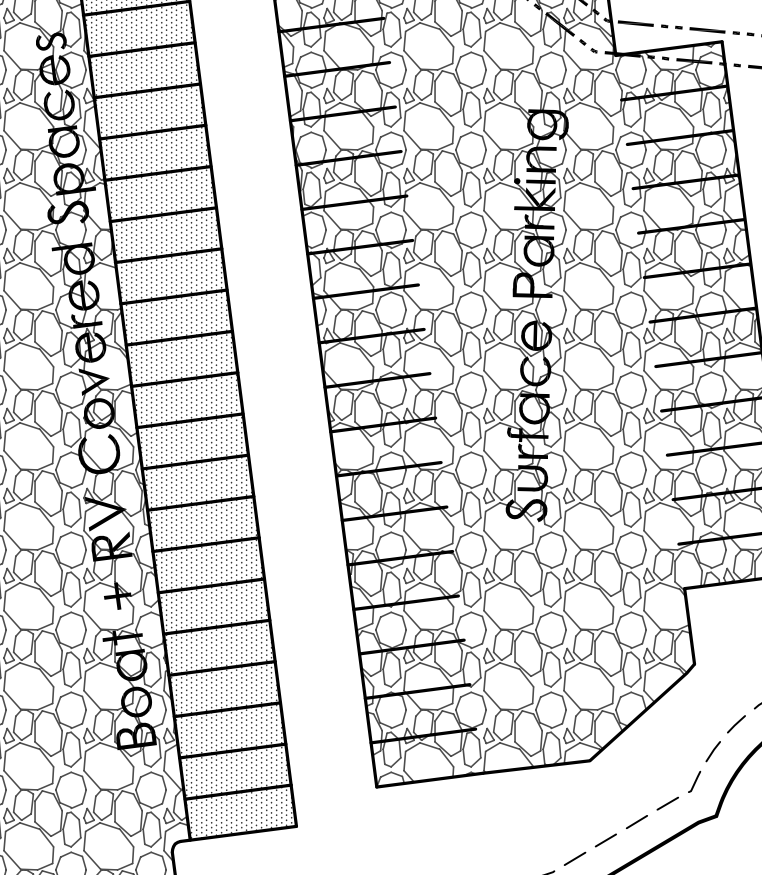
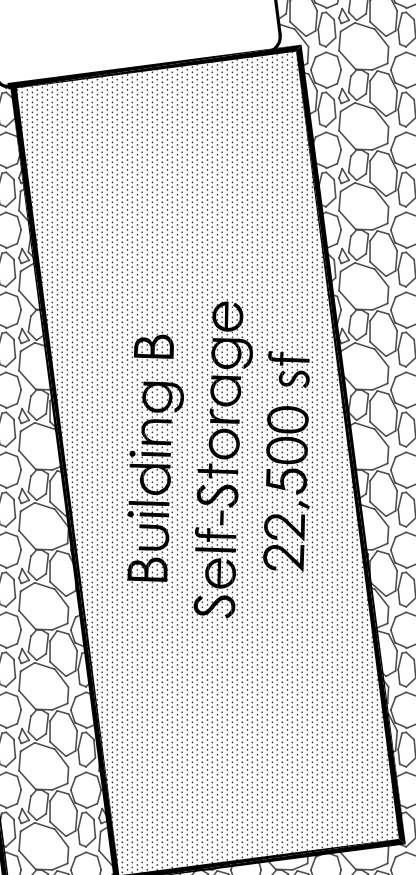
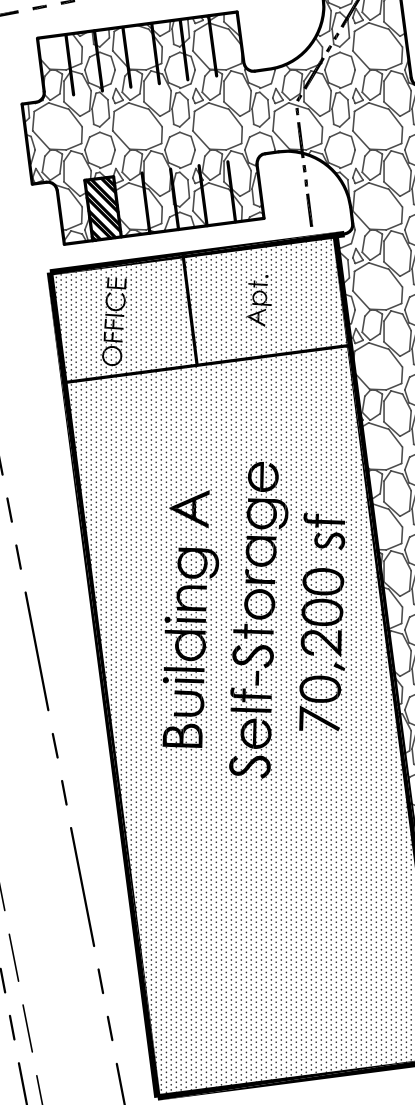
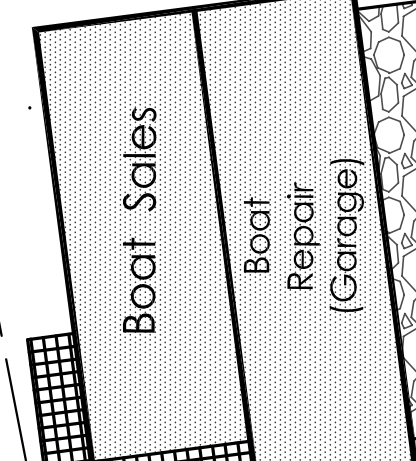
20 foot landscape buffer

50 foot building setback

6" WL

20 foot landscape buffer

20 foot landscape buffer

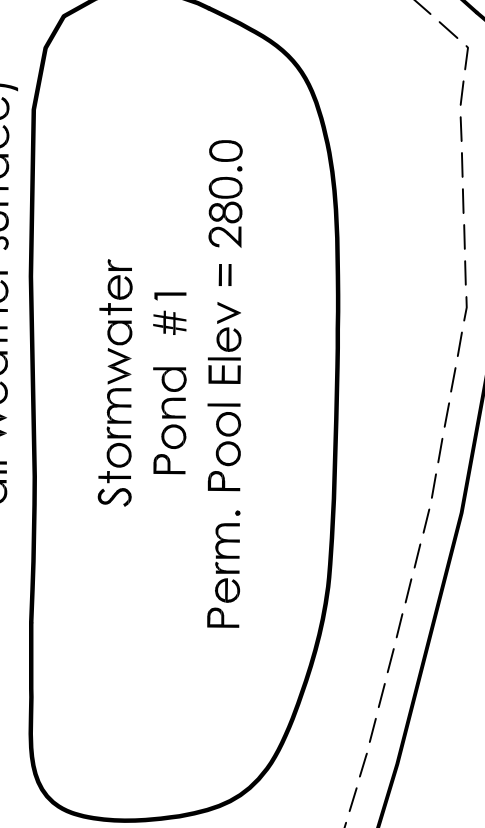
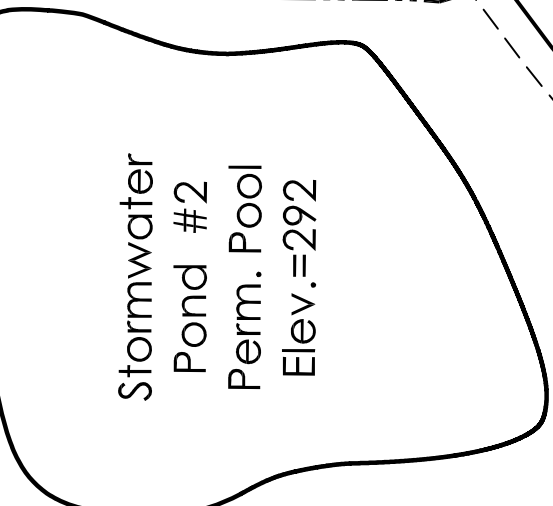
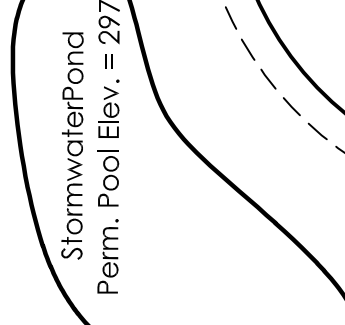


Boat + RV Covered Spaces

Surface Parking

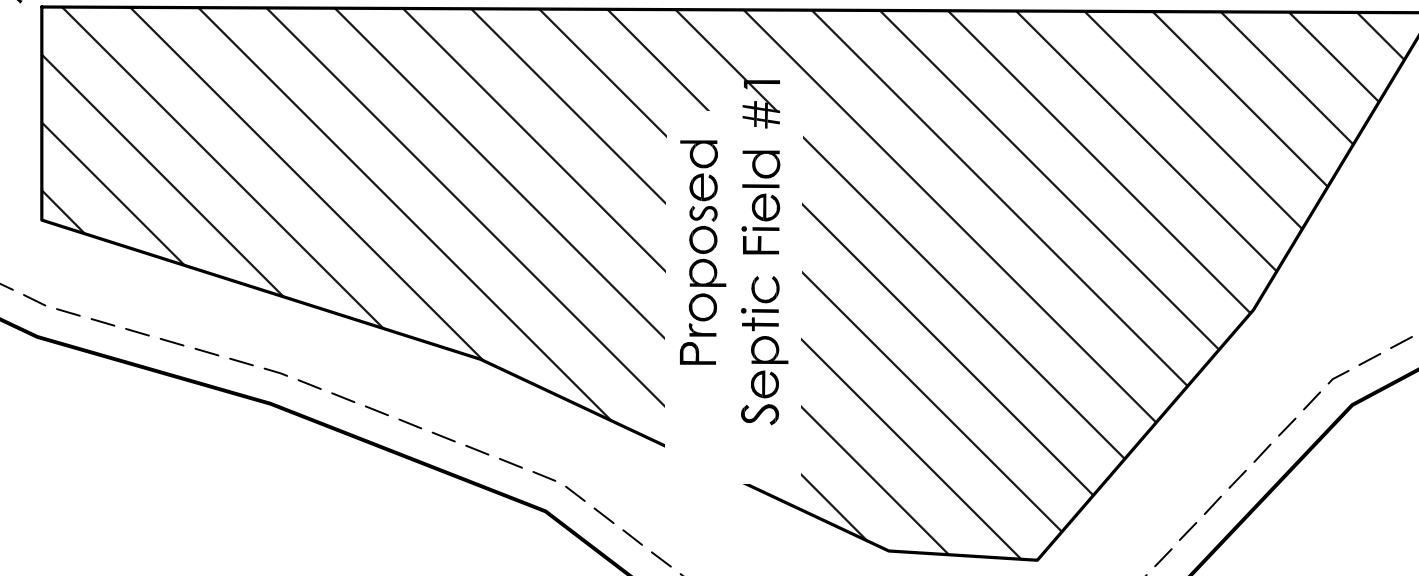
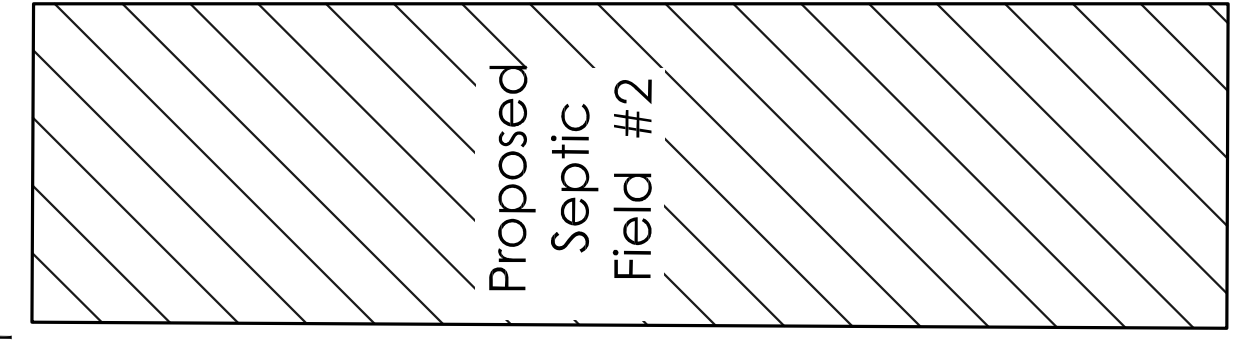
Boat + RV Covered Spaces

Surface Parking



Utility Crossing - Exempt Buffer Crossing

Proposed Forcemain - Office to Septic System



BUILDING AREA SUMMARY

- 3-story self storage (bldg A): 70,200 sf
- 1-story self storage (bldg B): 22,500 sf
- boat sales + repair: 15,000 sf
- boat + RV garages: 13ft wide x 34 feet : 66,300 sf
- all driveways and surface parking: 310,000 sf

LEGEND

- Building or Covered Structure
- Paved or Gravel Surface

C3

SITE PLAN

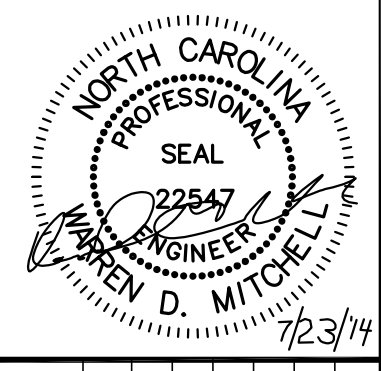
Scale: 1"=60'

July 3, 2014

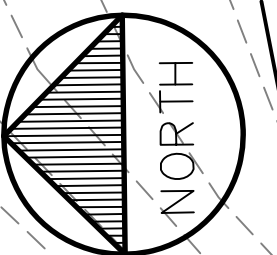
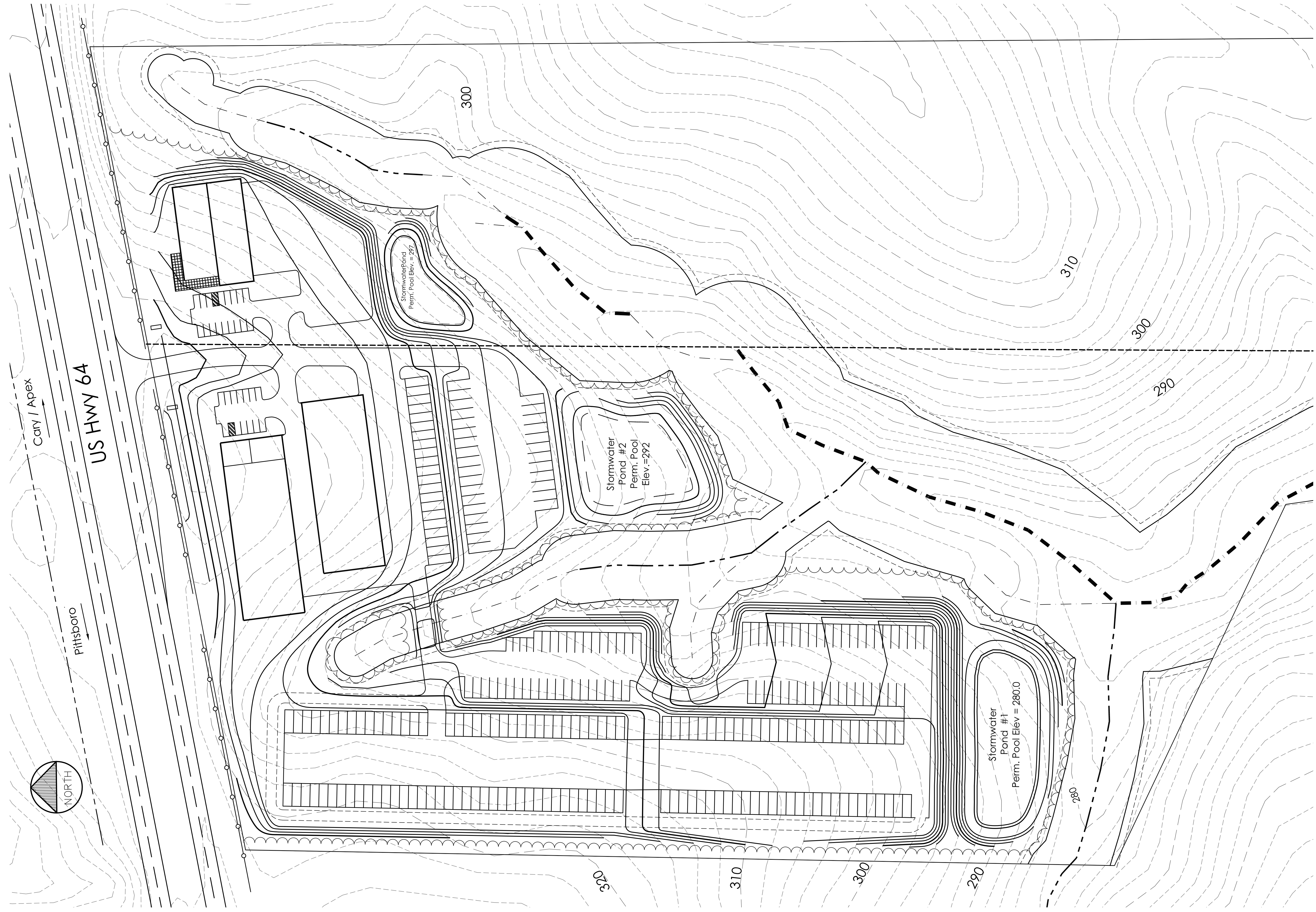
Space Station Conditional Zoning District
Self-Storage, Boat + RV Storage, Boat Sales

Chatham County, North Carolina

REVISIONS



Warren D. Mitchell, PE
 Civil Engineering
 253 Tobacco Farm Way
 CHAPEL HILL, NORTH CAROLINA, 27516
 warren@mitchellpe.com
 P (919) 593-1916



Cary / Apex

Pittsboro

US HWY 64

Stormwater Pond
Perm. Pool Elev. = 297

Stormwater Pond #2
Perm. Pool Elev. = 292

Stormwater Pond #1
Perm. Pool Elev = 280.0

300

310

300

290

320

310

300

290

280

REVISIONS

Space Station Conditional Zoning District
Self-Storage, Boat + RV Storage, Boat Sales

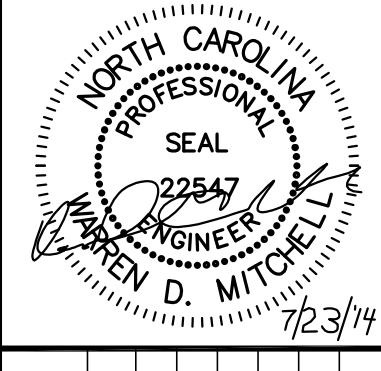
Chatham County, North Carolina

July 3, 2014

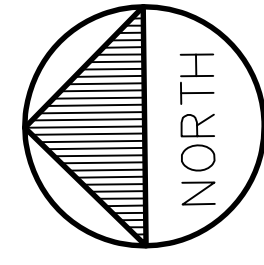
Scale: 1"=60'

Grading + Storm Plan

C4



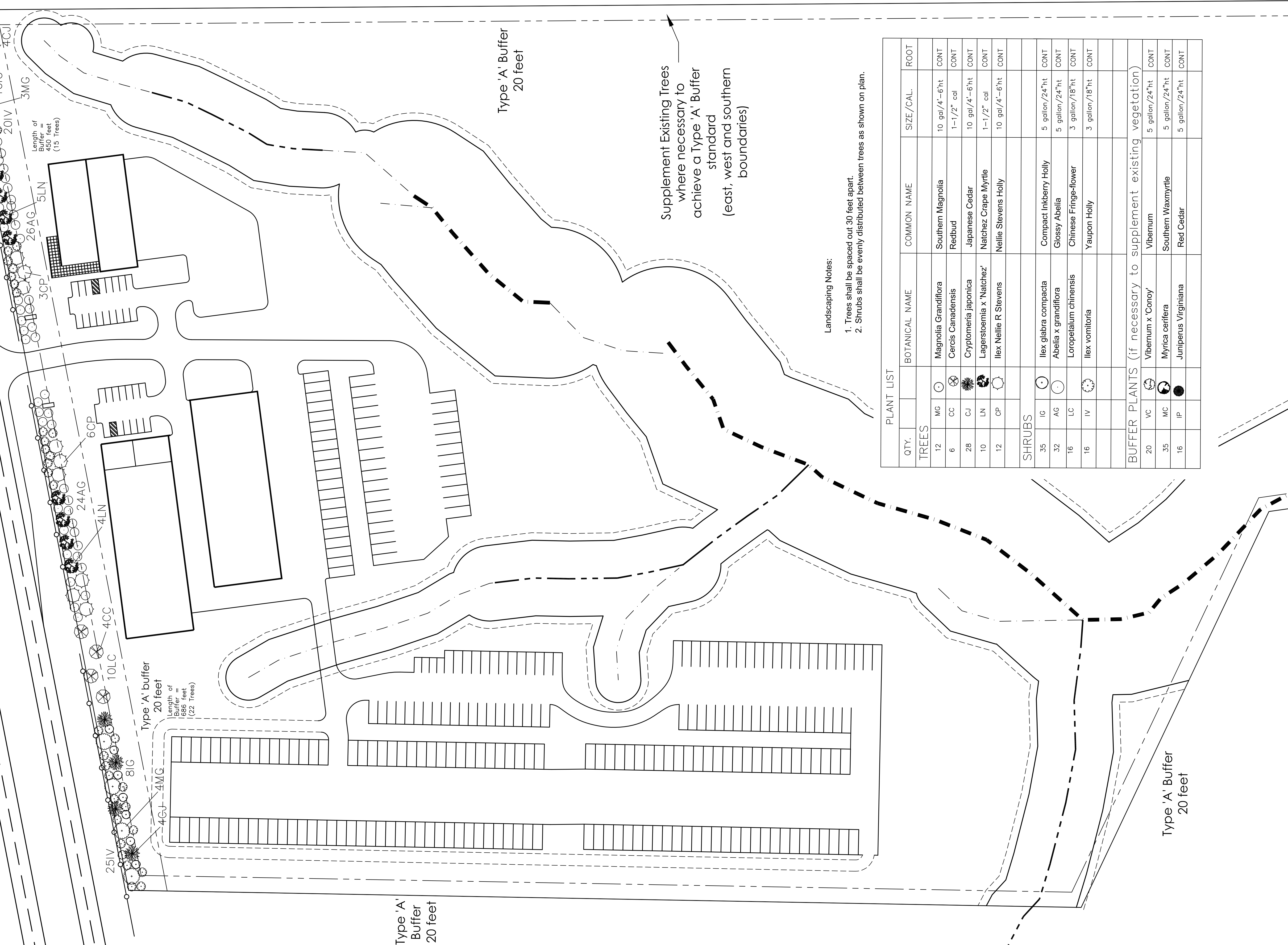
Warren D. Mitchell, PE
Civil Engineering
253 Tobacco Farm Way
CHAPEL HILL, NORTH CAROLINA 27516
warrenmitchellpe@gmail.com
P (919) 593-1916



Cary / Apex

Pittsboro

US HWY 64



Length of Buffer = 450 feet (15 Trees)

Type 'A' Buffer 20 feet
Length of Buffer = 686 feet (22 Trees)

Type 'A' Buffer 20 feet

Type 'A' Buffer 20 feet

Type 'A' Buffer 20 feet

Supplement Existing Trees where necessary to achieve a Type 'A' Buffer standard (east, west and southern boundaries)

Landscaping Notes:

- 1. Trees shall be spaced out 30 feet apart.
- 2. Shrubs shall be evenly distributed between trees as shown on plan.

QTY.		BOTANICAL NAME	COMMON NAME	SIZE/CAL.	ROOT
TREES					
12	MG	Magnolia Grandiflora	Southern Magnolia	10 gal/4"-6"ht	CONT
6	CC	Cercis Canadensis	Redbud	1-1/2" cal	CONT
28	CJ	Cryptomeria japonica	Japanese Cedar	10 gal/4"-6"ht	CONT
10	LN	Lagerstroemia x 'Natchez'	Natchez Crape Myrtle	1-1/2" cal	CONT
12	CP	Ilex Nellie R Stevens	Nellie Stevens Holly	10 gal/4"-6"ht	CONT
SHRUBS					
35	IG	Ilex glabra compacta	Compact Inkberry Holly	5 gallon/24"ht	CONT
32	AG	Abelia x grandiflora	Glossy Abelia	5 gallon/24"ht	CONT
16	LC	Loropetalum chinensis	Chinese Fringe-flower	3 gallon/18"ht	CONT
16	IV	Ilex vomitoria	Yaupon Holly	3 gallon/18"ht	CONT
BUFFER PLANTS (if necessary to supplement existing vegetation)					
20	VC	Viburnum x 'Conoy'	Viburnum	5 gallon/24"ht	CONT
35	MC	Myrica cerifera	Southern Waxmyrtle	5 gallon/24"ht	CONT
16	IP	Juniperus Virginiana	Red Cedar	5 gallon/24"ht	CONT

Space Station Conditional Zoning District
Self-Storage, Boat + RV Storage, Boat Sales

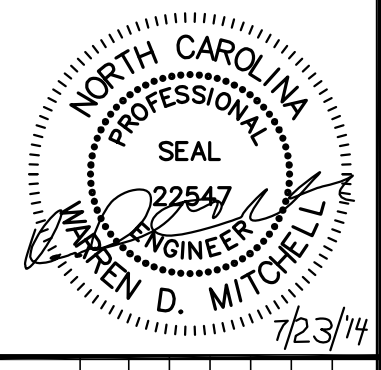
Chatham County, North Carolina

July 3, 2014

Scale: 1"=60'

Landscape Plan

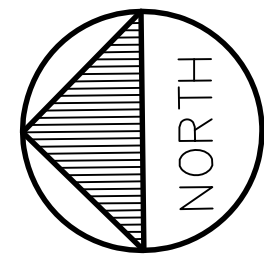
C5



Warren D. Mitchell, PE
Civil Engineering
253 Tobacco Farm Way
CHAPEL HILL, NORTH CAROLINA 27516
warrenmitchellpe@gmail.com
P (919) 993-1916

REVISIONS

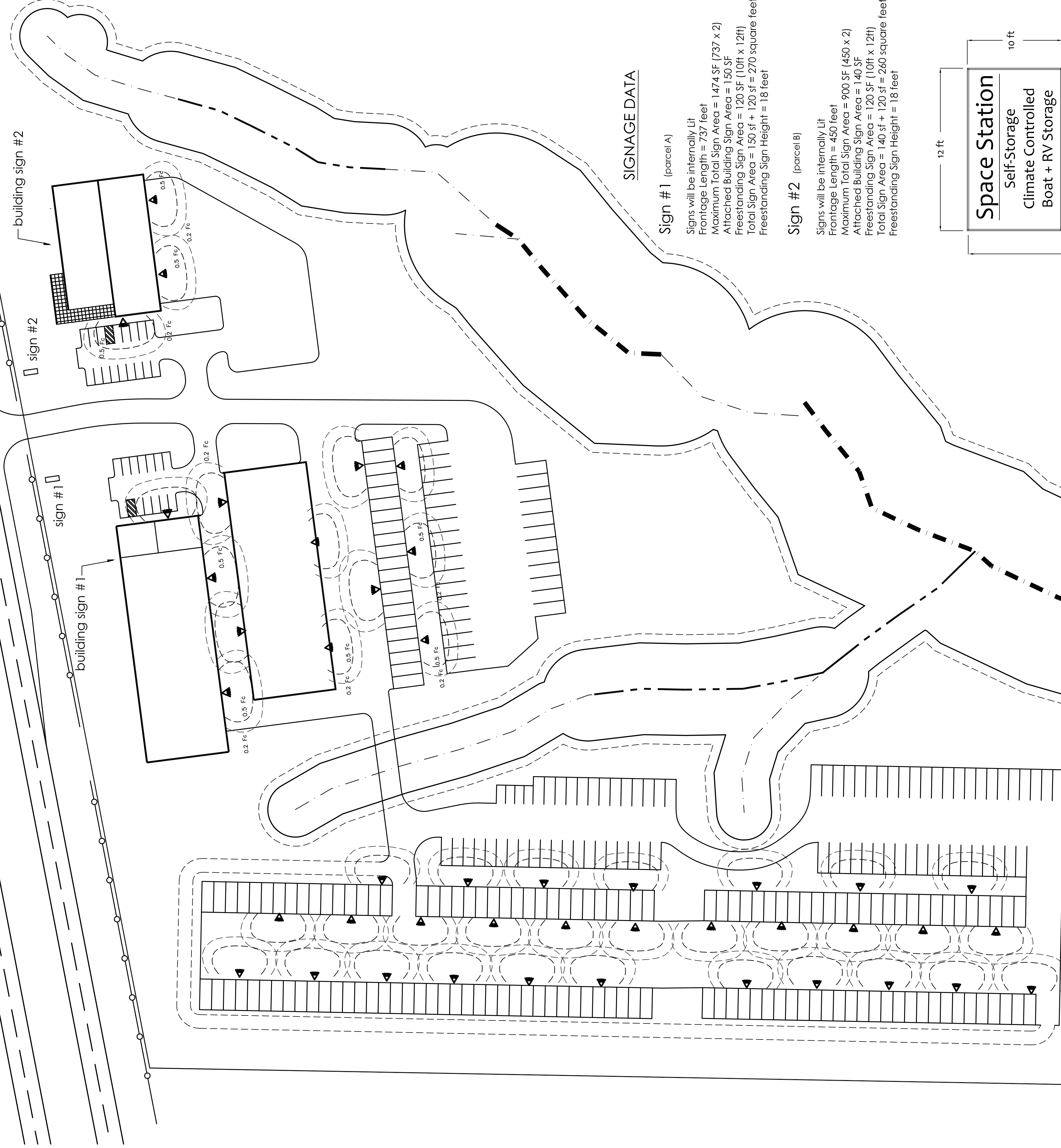
7/23/14



Pittsboro

Cary / Apex

US HWY 64



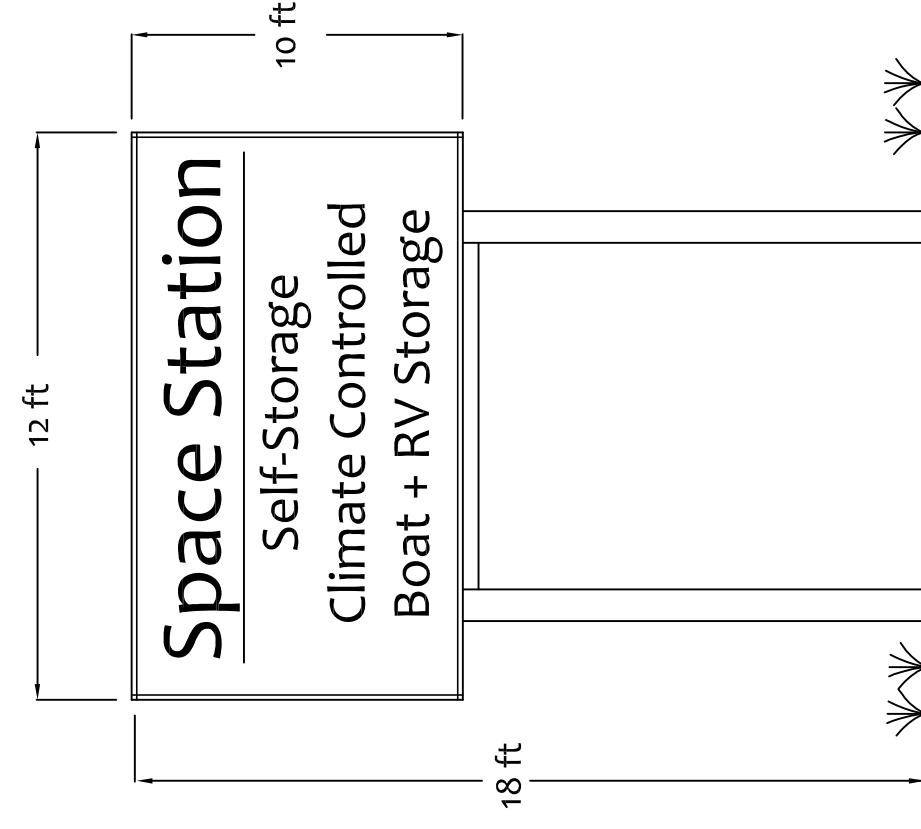
SIGNAGE DATA

Sign #1 (parcel A)

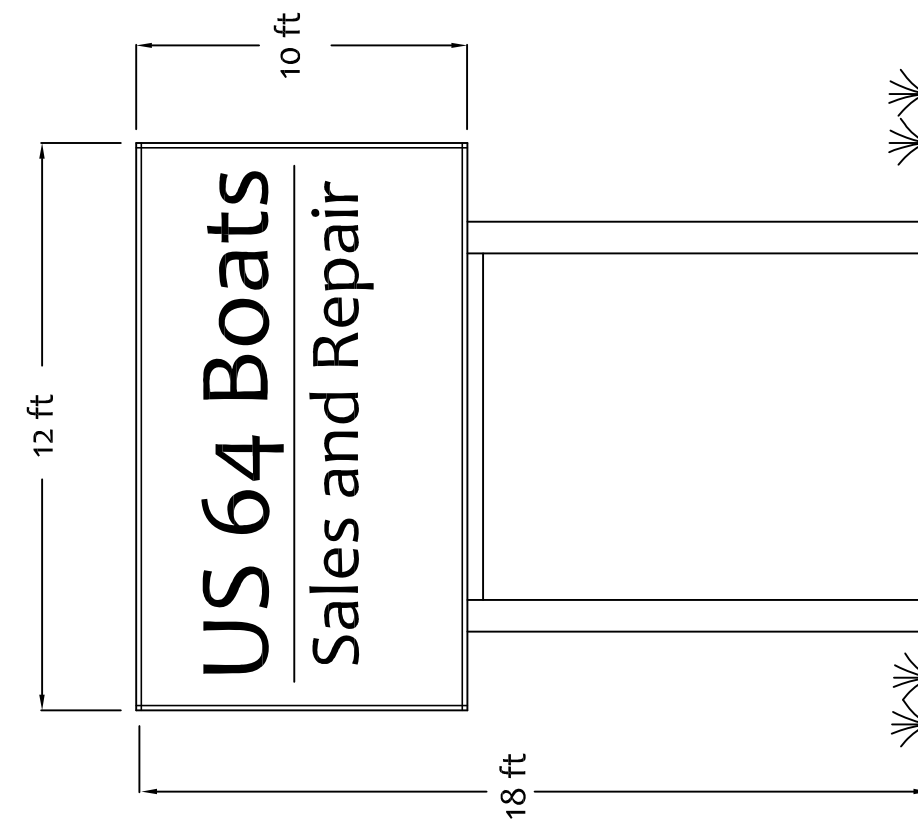
Signs will be internally lit
 Frontage Length = 73.7 feet
 Maximum Total Sign Area = 1474 SF (737 x 2)
 Attached Building Sign Area = 150 SF
 Freestanding Sign Area = 120 SF (10ft x 12ft)
 Total Sign Area = 150 sf + 120 sf = 270 square feet
 Freestanding Sign Height = 18 feet

Sign #2 (parcel B)

Signs will be internally lit
 Frontage Length = 450 feet
 Maximum Total Sign Area = 900 SF (450 x 2)
 Attached Building Sign Area = 140 SF
 Freestanding Sign Area = 120 SF (10ft x 12ft)
 Total Sign Area = 140 sf + 120 sf = 260 square feet
 Freestanding Sign Height = 18 feet



PROPOSED SIGN #1



PROPOSED SIGN #2

Lighting Notes:

Lighting will comply with all provisions of the Chatham County Lighting Ordinance. Specifically, the maximum light level shall be 0.5 maintained footcandle at any property line in a residential area.

Site lights shall be wall pack style lights mounted on the storage buildings and will be full cutoff enclosed lights.

FIXTURES:

1. All wall packs on the building(s) will be style WPXL86 LED by Atlas Lighting.
2. Wall packs on the one-story self-storage buildings will be mounted at a height of approximately 11 feet.
3. Wall packs on the three-story self-storage building will be mounted at a height of 20 feet.
4. Wall packs mounted on the boat + RV storage buildings will be mounted at a height of 14 to 16 feet.



REVISIONS

Space Station Conditional Zoning District
 Self-Storage, Boat + RV Storage, Boat Sales

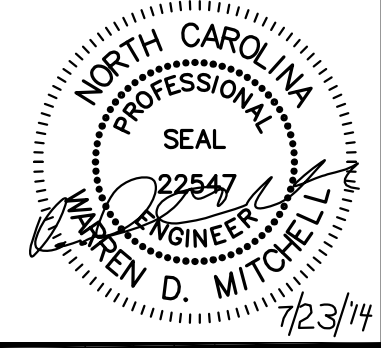
Chatham County, North Carolina

July 3, 2014

Scale: 1"=60'

Sign+Lighting Plan

C6



Warren D. Mitchell, PE
 Civil Engineering
 253 Tobacco Farm Way
 CHAPEL HILL, NORTH CAROLINA 27516
 warren@mitchellpe@gmail.com
 P (919) 593-1916