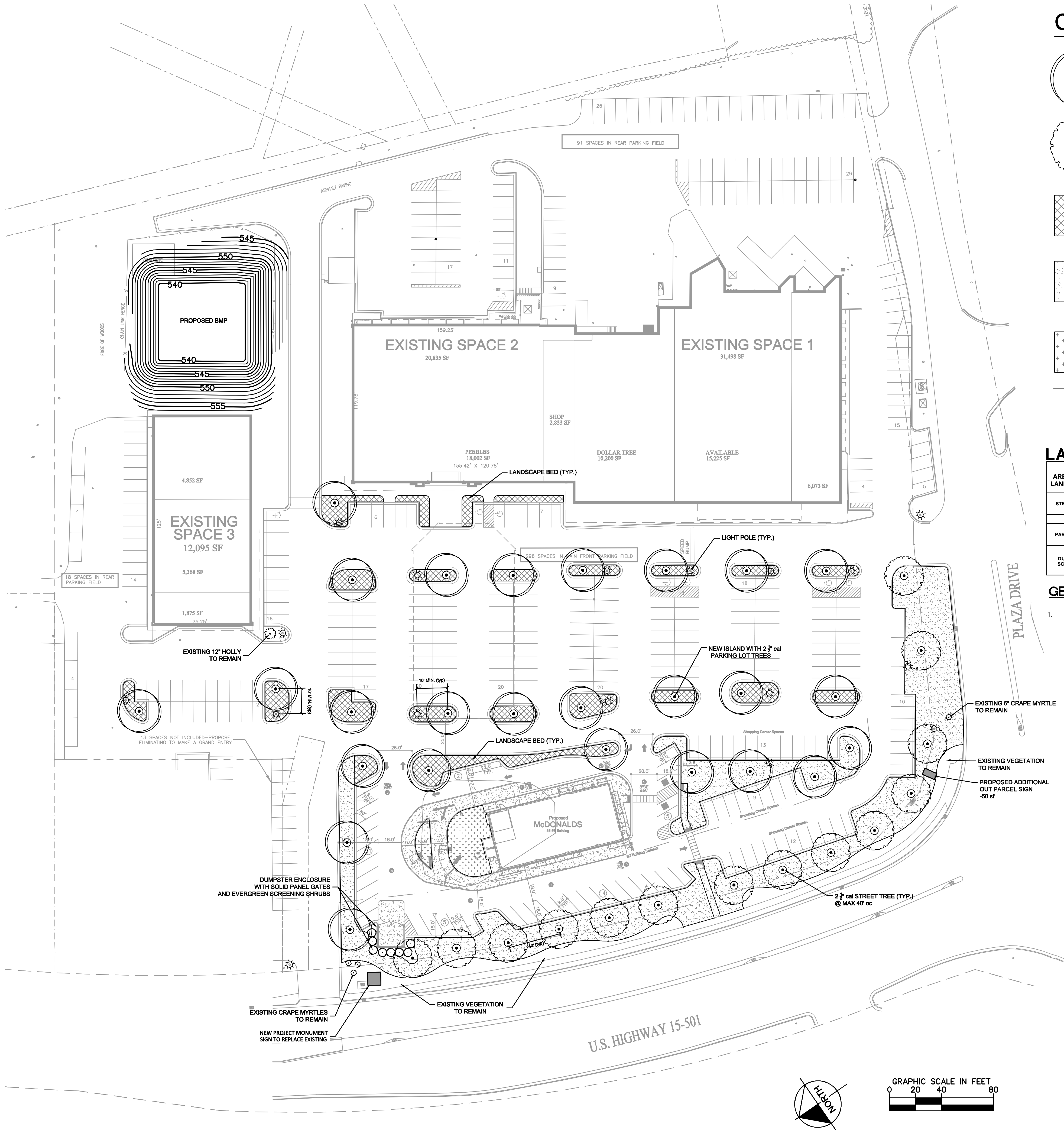


Plotted By: Henderson, Ross Sheet Set: kha Layout: Layout1 May 21, 2014 02:42:40pm k:\V\DT-LIB\A\012700000_Cole Park Plaza\15-CAD\Files\Plansheets\1-10 Landscape Plan.dwg
This document, together with the concepts and designs presented herein, is intended only for the specific purpose and client for which it was prepared. Reuse of and improper reliance on this document without written authorization and adaptation by Kimley-Horn and Associates, Inc. shall be without liability to Kimley-Horn and Associates, Inc.



CONCEPT PLANT SCHEDULE

	PARKING LOT TREES ACER BUERGERIANUM 'ABFSS' / VALYNOR TRIDENT MAPLE	26
	STREET YARD SHADE TREES ULMUS PARVIFOLIA 'BSNUFF' / EVERCLEAR LACEBARK ELM	14
	EVERGREEN SHRUBS ILEX GLABRA 'COMPACTA' / COMPACT INKBERRY ILEX VOMITORIA 'NANA' / DWARF YAUPON	~8,723 SF
	SOD CYNODON DACTYLON / BERMUDA GRASS ZOYSIA X 'JAMUR' / JAMUR ZOYSIA	~21,361 SF
	GROUND COVERS, ORNAMENTAL GRASSES, EVERGREEN SHRUBS, AND LAWN	~1,773 SF
	LIGHT POLE/ FIXTURE	

LANDSCAPE REQUIREMENTS

AREA TO BE LANDSCAPED	CODE REQUIREMENT	SQUARE FEET/LINEAL FEET OF FRONTAGE	TOTAL QUANTITY REQUIRED	TOTAL QUANTITY PROVIDED	COMMENTS	CODE SECTION
STREET YARD	1 TREE SHALL BE PLANTED AT 40' OC.	652 ft	652 / 40 = 16.3	NEW TREES= 14 EXISTING TREES= 4 TOTAL TREES= 18	TREES SHALL BE A MINIMUM 2-1/2" CALIPER AT TIME OF INSTALLATION AND REACH A HEIGHT OF 30' AT MATURITY.	8A
RECOMMENDED DESIGN GUIDELINES						
PARKING LOT	PROVIDE TREES FOR SHADE OF AT LEAST 50% OF PAVED AREA. LANDSCAPE ISLANDS ARE REQUIRED AT THE ENDS OF PARKING AISLES, AT MAXIMUM OF EVERY 10 SPACES.	125,687 ft	125,687 ft / 5= 62,843.5 ft	NEW TREES= 28 EXISTING TREES= 1 TOTAL TREES= 29	PROPOSED PLANTINGS BASED ON BEST PRACTICES	7
DUMPSTER SCREENING	A 95% SOLID TREATED WOOD FENCE AT LEAST 1' HIGHER THAN OBJECT WITH BORDER PLANTINGS OF EVERGREEN SHRUBS THAT APPROXIMATE A 30% SCREEN ON THE TWO MOST VISIBLE SIDE OF FENCE.	N/A	N/A	SHRUBS= 8	TREES SHALL BE A MINIMUM 2-1/2" CALIPER AT TIME OF INSTALLATION AND REACH A HEIGHT OF 30' AT MATURITY.	4A

GENERAL NOTES:

1.

FOR ILLUSTRATIVE PURPOSES ONLY
AND SUBJECT TO CHANGE PENDING
FINAL SITE DESIGN

Kimley»Horn

© 2012 KIMLEY-HORN AND ASSOCIATES, INC.
333 FAYETTEVILLE STREET, SUITE 600, RALEIGH, NC 27601
PHONE: 919-835-1494 FAX: 919-653-5847
WWW.KIMLEY-HORN.COM

PRELIMINARY
NOT FOR CONSTRUCTION

PROGRESS
DRAFT

KHA PROJECT
012700000

DATE
10/25/2013

SCALE AS SHOWN

DESIGNED BY KHA

DRAWN BY KHA

CHECKED BY KHA

SHEET NUMBER

REVISIONS

BY

DATE