

# The Retreat At Haw River Site Plan

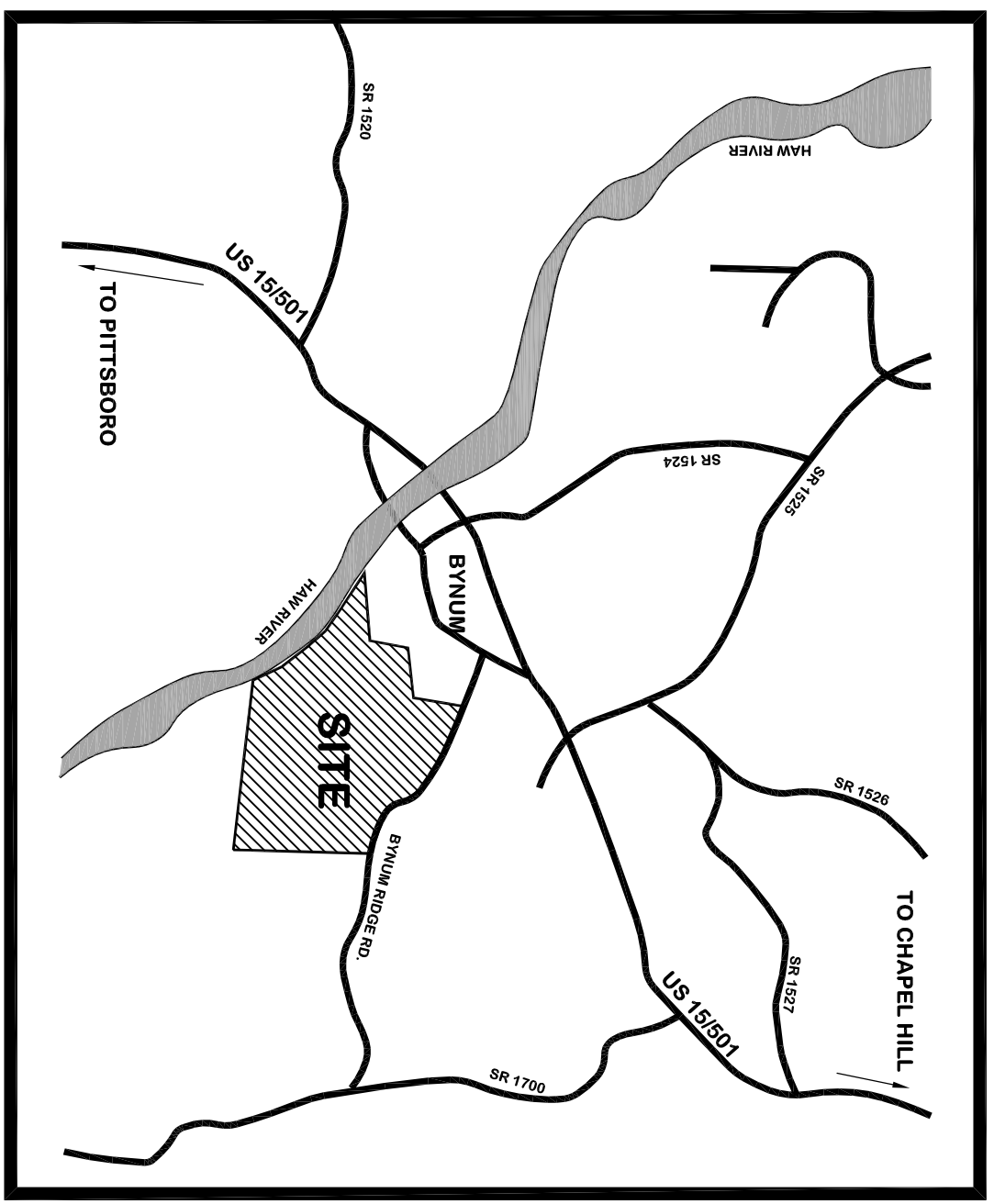
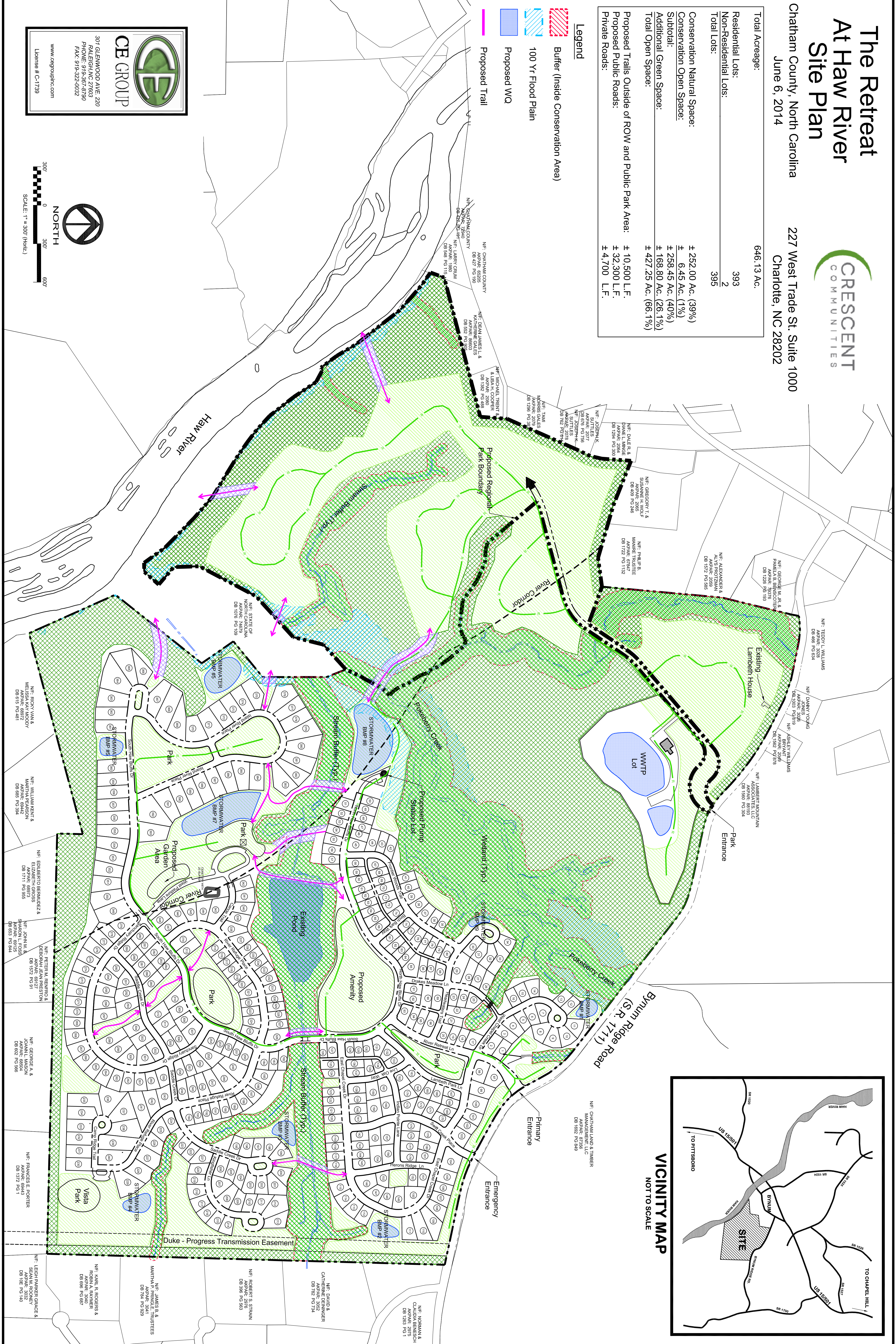


Chatham County, North Carolina  
June 6, 2014

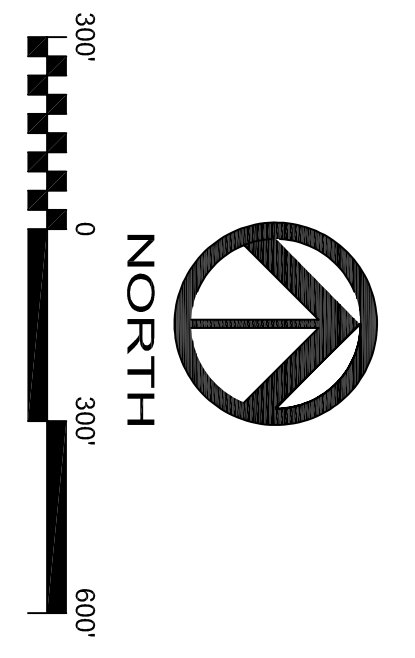
227 West Trade St. Suite 1000  
Charlotte, NC 28202

Total Acreage:	646.13 Ac.
Residential Lots:	393
Non-Residential Lots:	2
Total Lots:	395
Conservation Natural Space:	± 252.00 Ac. (39%)
Conservation Open Space:	± 6.45 Ac. (1%)
Subtotal:	± 258.45 Ac. (40%)
Additional Green Space:	± 168.80 Ac. (26.1%)
Total Open Space:	± 427.25 Ac. (66.1%)
Proposed Trails Outside of ROW and Public Park Area:	± 10,500 L.F.
Proposed Public Roads:	± 32,300 L.F.
Private Roads:	± 4,700 L.F.

- Legend**
- Buffer (Inside Conservation Area)
  - 100 Yr Flood Plain
  - Proposed WQ
  - Proposed Trail



307 GLENWOOD AVE, 220  
RALEIGH, NC 27603  
PHONE: 919-367-8790  
FAX: 919-322-0032  
www.cegroupinc.com  
License # C-1739



N.F. CAROLINA COUNTY  
N.F. CHATHAM COUNTY  
N.F. DEAN JAMES L. &  
MAYNARD GALE  
APPEAR: 1980  
DB 548 PG 115  
DB 527 PG 98  
DB 527 PG 98  
DB 548 PG 115  
N.F. TAMI  
MORRIS GALE  
APPEAR: 2011  
DB 198 PG 33  
N.F. JOSEPH K.  
APPEAR: 2011  
DB 676 PG 756  
N.F. JOSEPH K.  
APPEAR: 2011  
DB 676 PG 756  
N.F. DALE R. &  
DANIEL L. MINGE  
APPEAR: 2014  
DB 124 PG 303  
N.F. GREGORY T. &  
SUSANNE H. WOLF  
APPEAR: 2014  
DB 489 PG 246  
N.F. PHILIP B.  
MANIRE TRUSTEE  
APPEAR: 2011  
DB 172 PG 1132  
N.F. ALEXANDER &  
PANELA E. BERSCOTER  
APPEAR: 2009  
DB 1572 PG 585  
N.F. GEORGE A. &  
PANELA E. BERSCOTER  
APPEAR: 2009  
DB 1226 PG 193  
N.F. TEDDY L. WILLIAMS  
APPEAR: 2012  
DB 468 PG 634  
N.F. DANNY YOUNG  
APPEAR: 2012  
DB 1000 PG 819  
N.F. ASHLEY WILLIAMS  
APPEAR: 2012  
DB 1957 PG 978  
N.F. LAMBERT YOUNG  
APPEAR: 2012  
DB 1580 PG 334  
N.F. RICH VAN &  
MELISSA KAY MOODY  
APPEAR: 2012  
DB 615 PG 451  
N.F. WILLIAM KENT &  
MARTHA PARSON  
APPEAR: 2012  
DB 685 PG 394  
N.F. EDUARDO BERNARDEZ &  
ELIZABETH GROSS  
APPEAR: 2012  
DB 1111 PG 595  
N.F. PETER M. RENFRO &  
DEBORAH JEAN PRESTON  
APPEAR: 2012  
DB 1012 PG 531  
N.F. GEORGE A. &  
JOANN L. MASON  
APPEAR: 2012  
DB 92 PG 538  
N.F. FRANCIS E. PORTER  
APPEAR: 2012  
DB 1372 PG 1  
N.F. KARL R. ROGERS &  
ROBIN A. RAYNER  
APPEAR: 2010  
DB 89 PG 535  
N.F. JAMES B. &  
ROBIN A. RAYNER  
APPEAR: 2011  
DB 774 PG 929  
N.F. ROBERT S. STRAIN  
APPEAR: 2012  
DB 388 PG 583  
N.F. DAVID &  
CATHERINE DENINGER  
APPEAR: 2012  
DB 732 PG 734  
N.F. NORMAN &  
CLAUDIA BENSCH  
APPEAR: 2012  
DB 1283 PG 1