

The Retreat At Haw River Site Plan

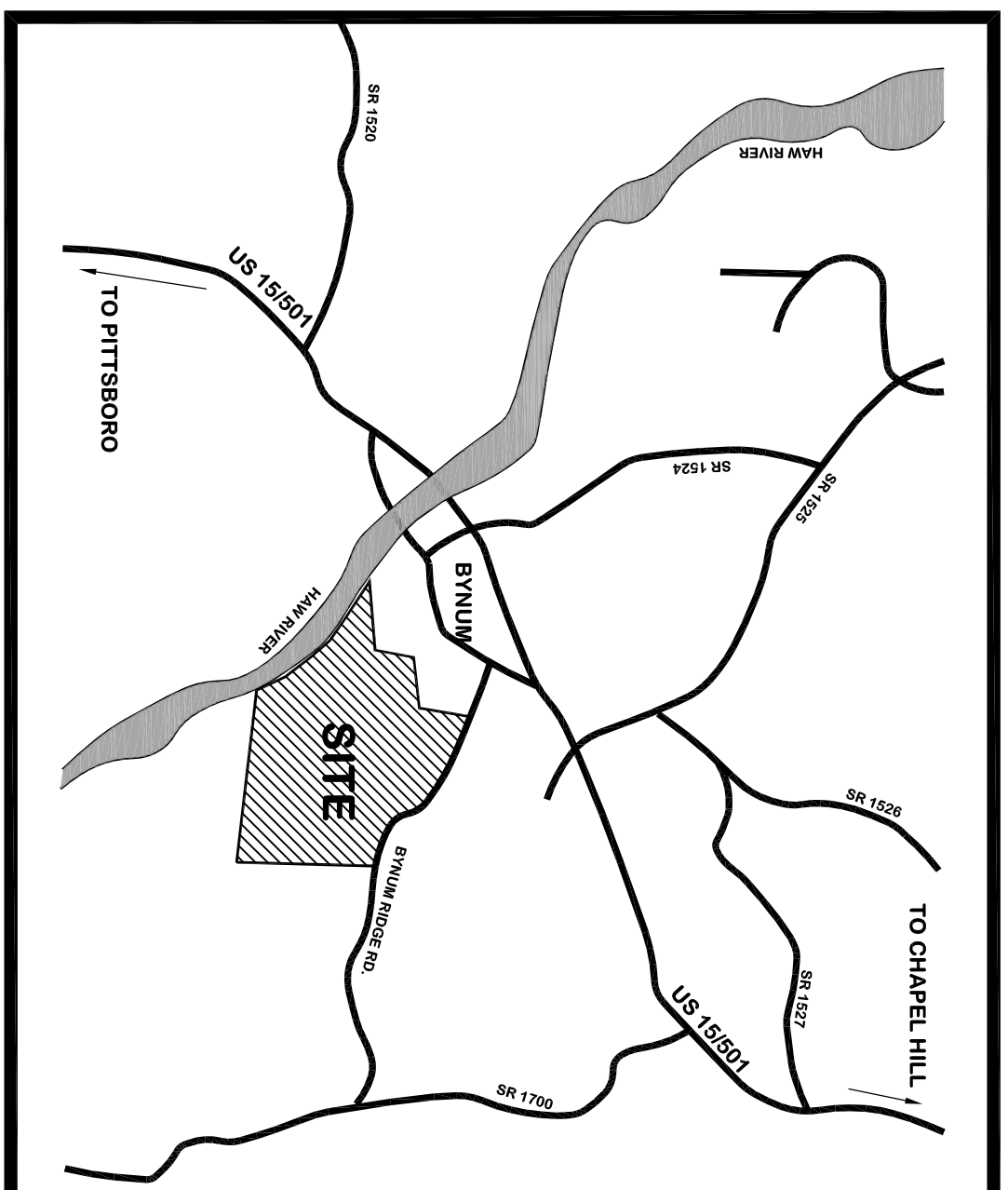
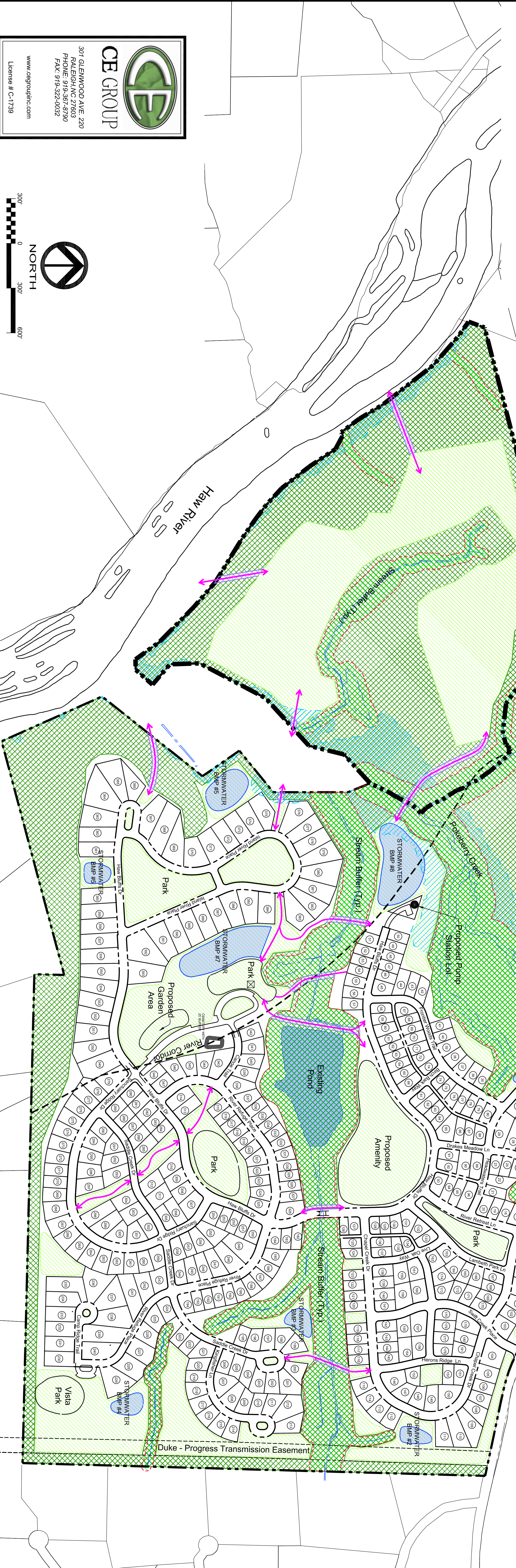


Chatham County, North Carolina
May 16, 2014

227 West Trade St. Suite 1000
Charlotte, NC 28202

Total Acreage:	646.13 Ac.
Residential Lots:	393
Non-Residential Lots:	2
Total Lots:	395
Conservation Natural Space:	± 252.00 Ac. (39%)
Conservation Open Space:	± 6.45 Ac. (1%)
Subtotal:	± 258.45 Ac. (40%)
Additional Green Space:	± 168.80 Ac. (26.1%)
Total Open Space:	± 427.25 Ac. (66.1%)
Proposed Trails Outside of ROW and Public Park Area:	± 10,500 L.F.
Proposed Public Roads:	± 32,300 L.F.
Private Roads:	± 4,700 L.F.

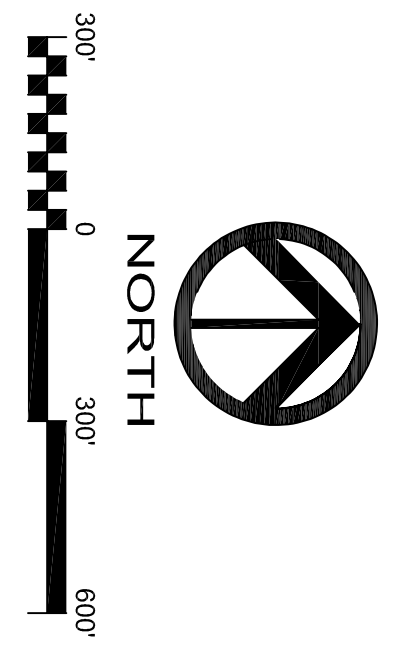
- Legend**
- Buffer (Inside Conservation Area)
 - 100 Yr Flood Plain
 - Proposed WQ
 - Proposed Trail



CCE GROUP

307 GLENWOOD AVE, 220
RALEIGH, NC 27603
PHONE: 919-367-8790
FAX: 919-322-0032

www.ccegroupinc.com
License # C-1739



The Retreat At Haw River Drainage Plan

Chatham County, North Carolina
May 16, 2014



227 West Trade St. Suite 1000
Charlotte, NC 28202

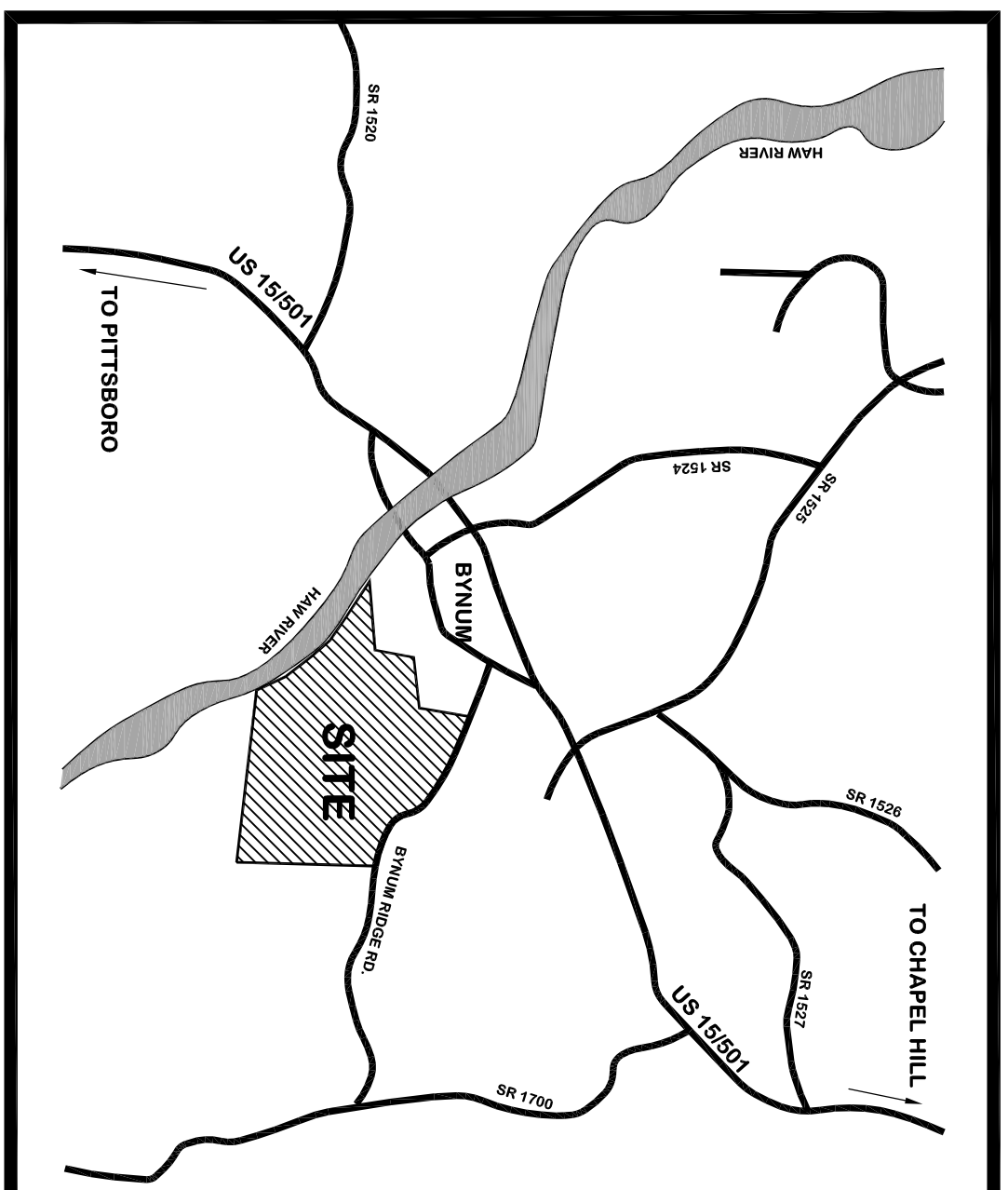
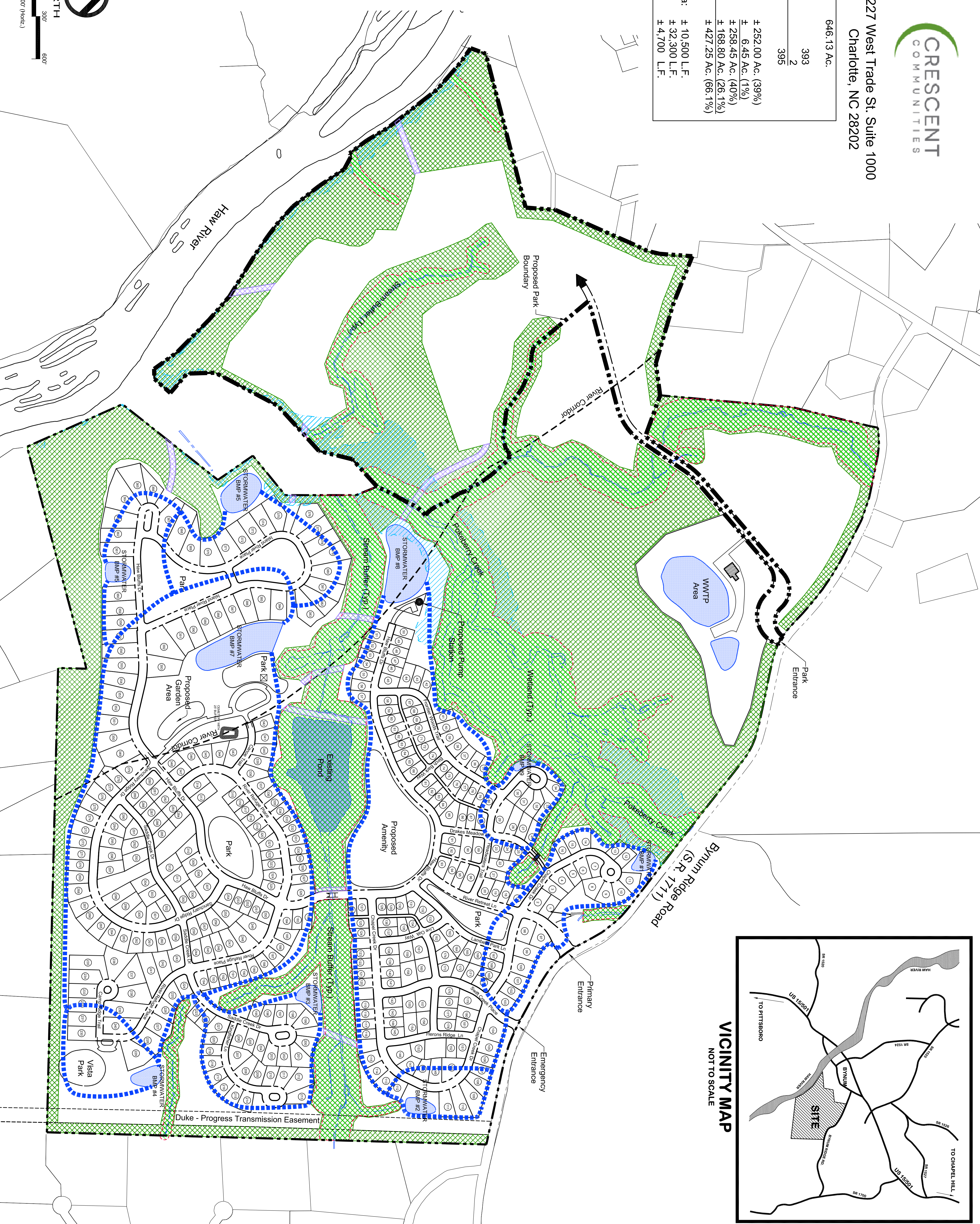
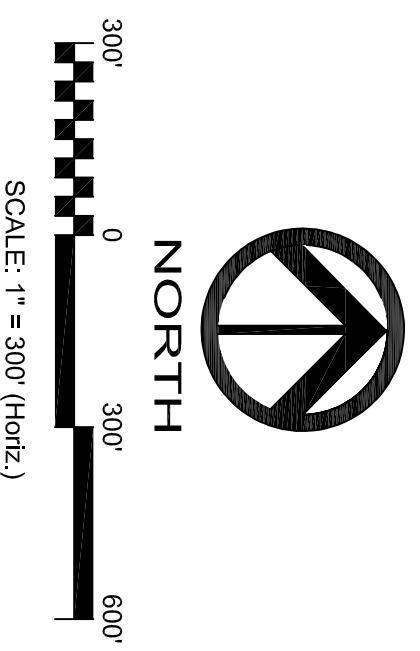
Total Acreage:	646.13 Ac.
Residential Lots:	393
Non-Residential Lots:	2
Total Lots:	395
Conservation Natural Space:	± 252.00 Ac. (39%)
Conservation Open Space:	± 6.45 Ac. (1%)
Subtotal:	± 258.45 Ac. (40%)
Additional Green Space:	± 168.80 Ac. (26.1%)
Total Open Space:	± 427.25 Ac. (66.1%)
Proposed Trails Outside of ROW and Public Park Area:	± 10,500 L.F.
Proposed Public Roads:	± 32,300 L.F.
Private Roads:	± 4,700 L.F.

Legend

- Buffer (Inside Conservation Area)
- 100 Yr Flood Plain
- Proposed WQ
- Conservation Natural Space
- Conservation Open Space
- Proposed Drainage Areas

Impervious Summary

Proposed Development:	± 87.4 Ac. (± 13.5%)
Future Park Area:	± 8.1 Ac. (± 1.5%)
Total:	± 15% (± 15%)





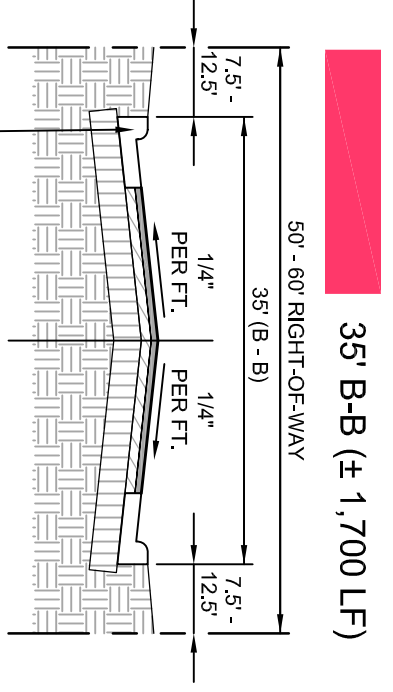
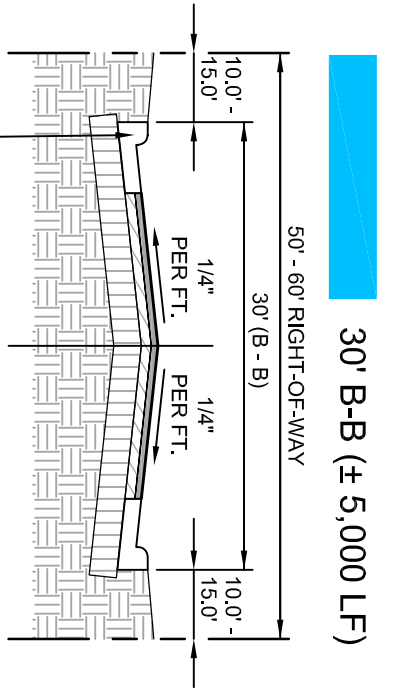
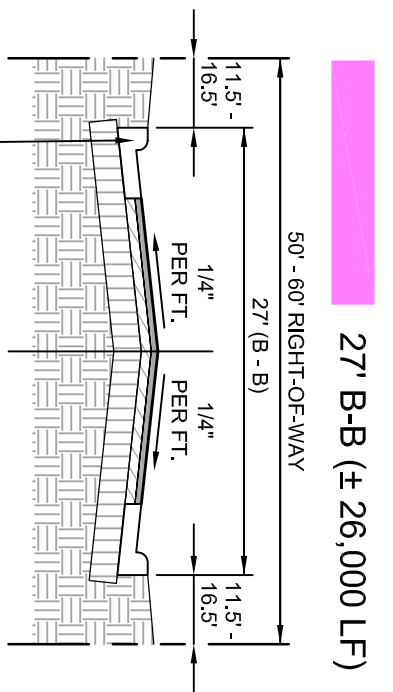
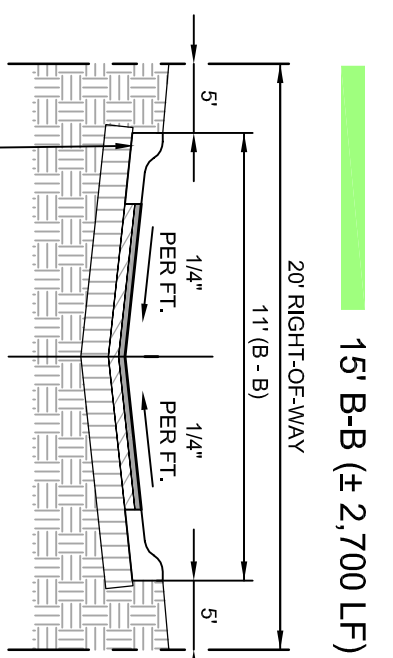
The Retreat At Haw River Roadway & Land Disturbance Plan

Chatham County, North Carolina
May 16, 2014

227 West Trade St. Suite 1000
Charlotte, NC 28202

Total Acreage:	646.13 Ac.
Residential Lots:	393
Non-Residential Lots:	2
Total Lots:	395
Conservation Natural Space:	± 252.00 Ac. (39%)
Conservation Open Space:	± 6.45 Ac. (1%)
Subtotal:	± 258.45 Ac. (40%)
Additional Green Space:	± 168.80 Ac. (26.1%)
Total Open Space:	± 427.25 Ac. (66.1%)
Proposed Trails Outside of ROW and Public Park Area:	± 10,500 L.F.
Proposed Public Roads:	± 32,300 L.F.
Private Roads:	± 4,700 L.F.

- Legend**
- Buffer (Inside Conservation Area)
 - Conservation Natural Space
 - Conservation Open Space
 - Green Space
 - Proposed WQ
 - Proposed Disturbed Limit Line (± 350 Ac.)

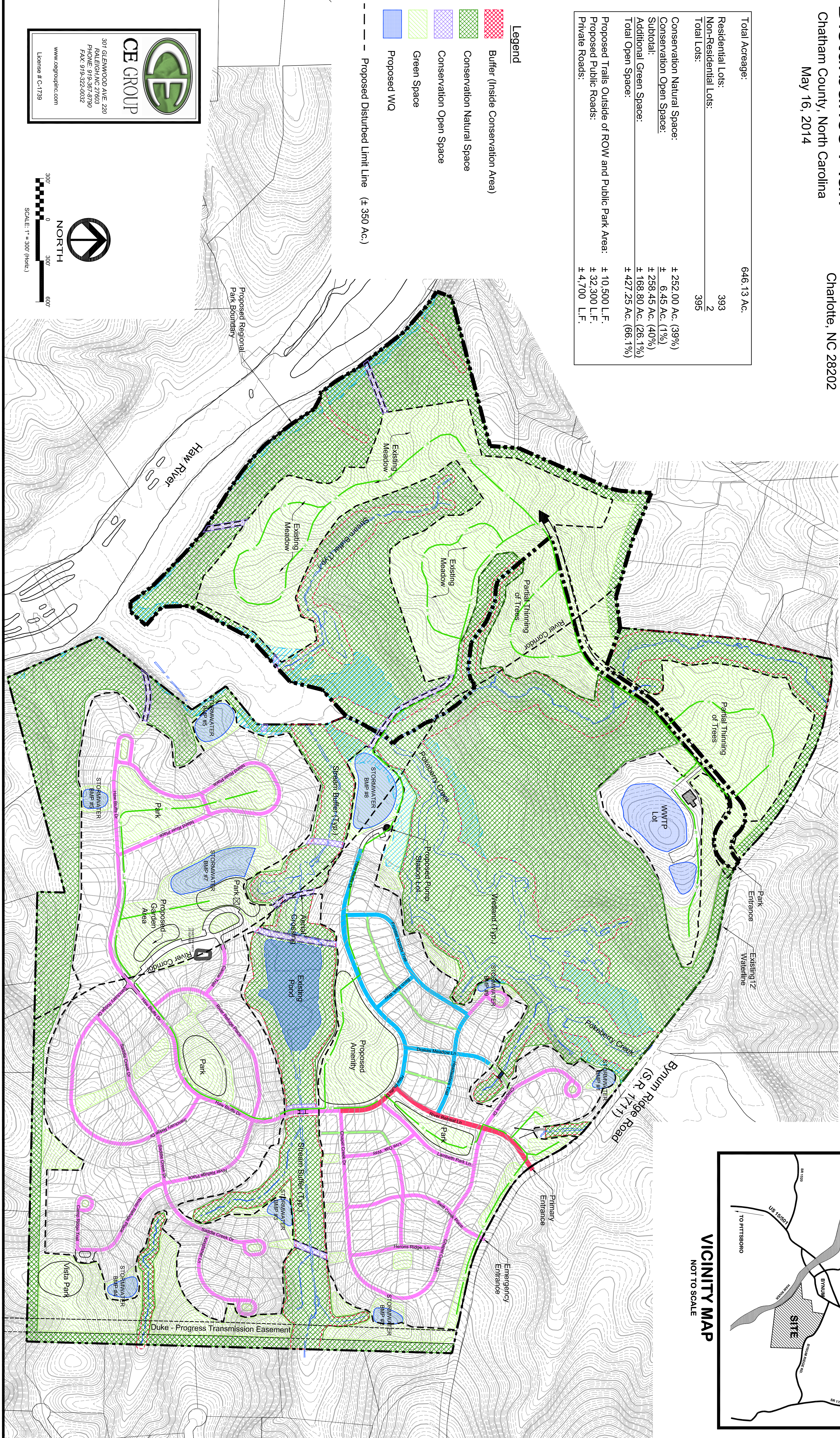
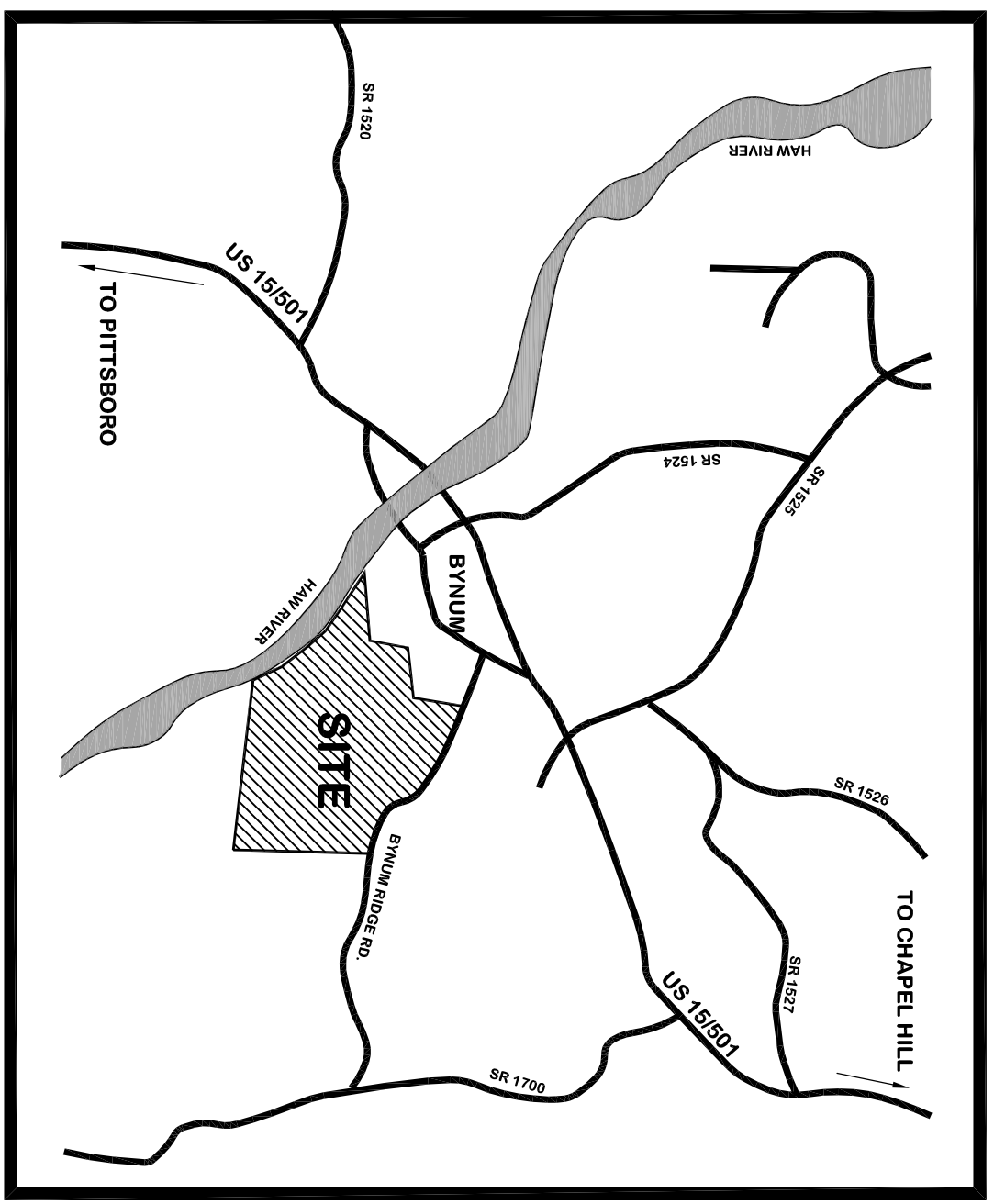


ROADWAY SECTION (15' B-B) NTS

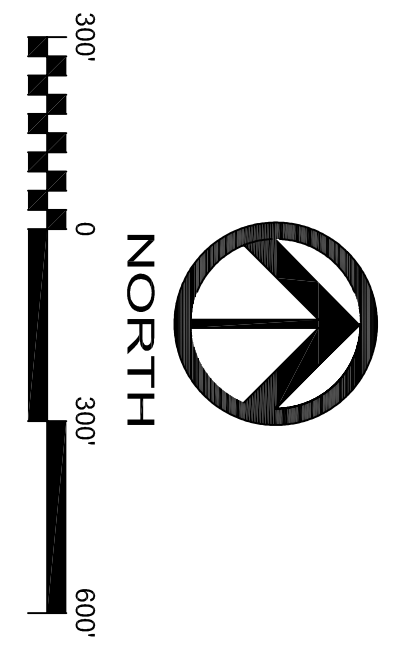
ROADWAY SECTION (27' B-B) NTS

ROADWAY SECTION (30' B-B) NTS

ROADWAY SECTION (35' B-B) NTS



307 GLENWOOD AVE, 220
PALEIGH, NC 27603
PHONE: 919-367-8790
FAX: 919-322-0032
www.cegroupinc.com
License # C-1739



The Retreat At Haw River Utility Plan



Chatham County, North Carolina
May 16, 2014

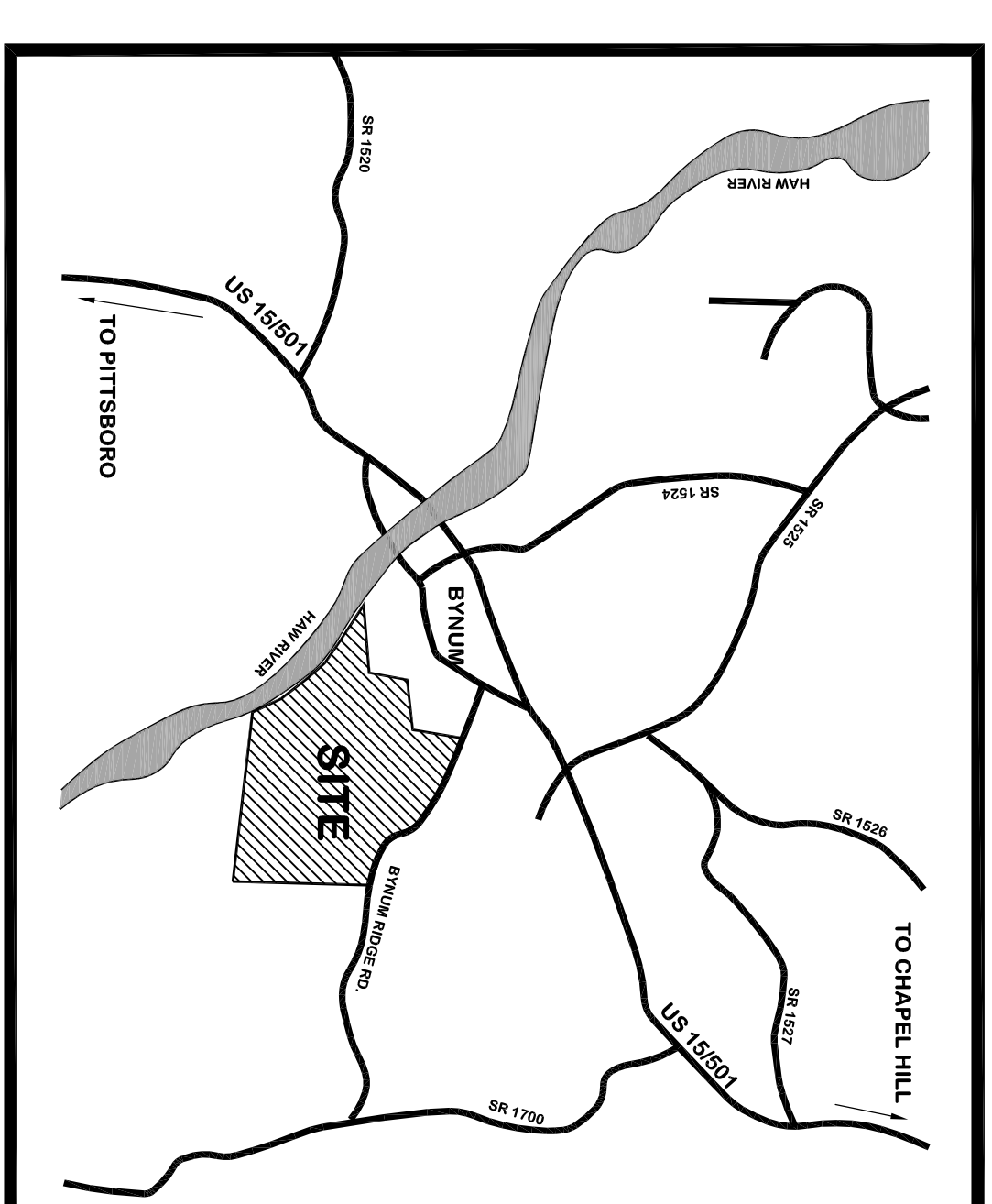
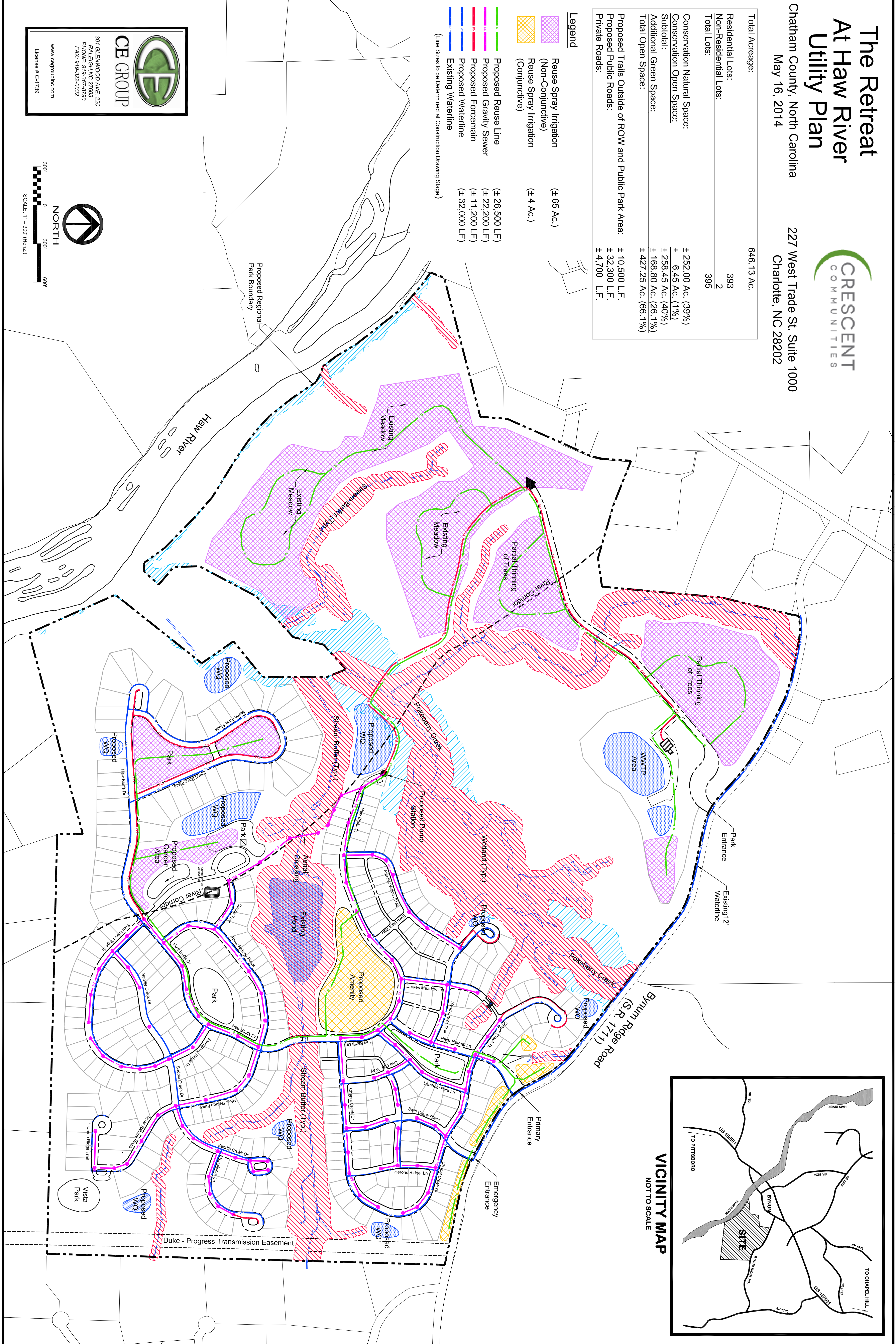
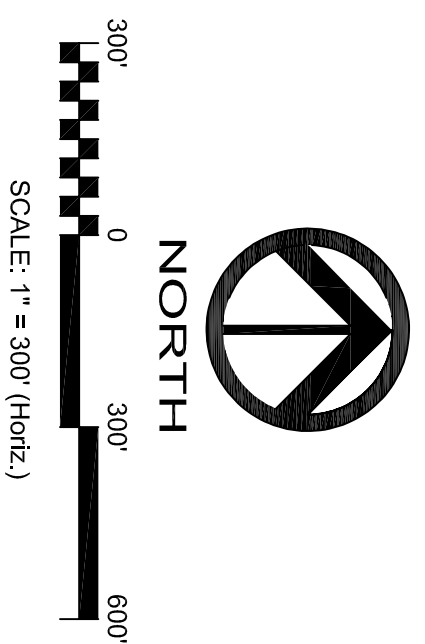
227 West Trade St. Suite 1000
Charlotte, NC 28202

Total Acreage:	646.13 Ac.
Residential Lots:	393
Non-Residential Lots:	2
Total Lots:	395
Conservation Natural Space:	± 252.00 Ac. (39%)
Conservation Open Space:	± 6.45 Ac. (1%)
Subtotal:	± 258.45 Ac. (40%)
Additional Green Space:	± 168.80 Ac. (26.1%)
Total Open Space:	± 427.25 Ac. (66.1%)
Proposed Trails Outside of ROW and Public Park Area:	± 10,500 L.F.
Proposed Public Roads:	± 32,300 L.F.
Private Roads:	± 4,700 L.F.

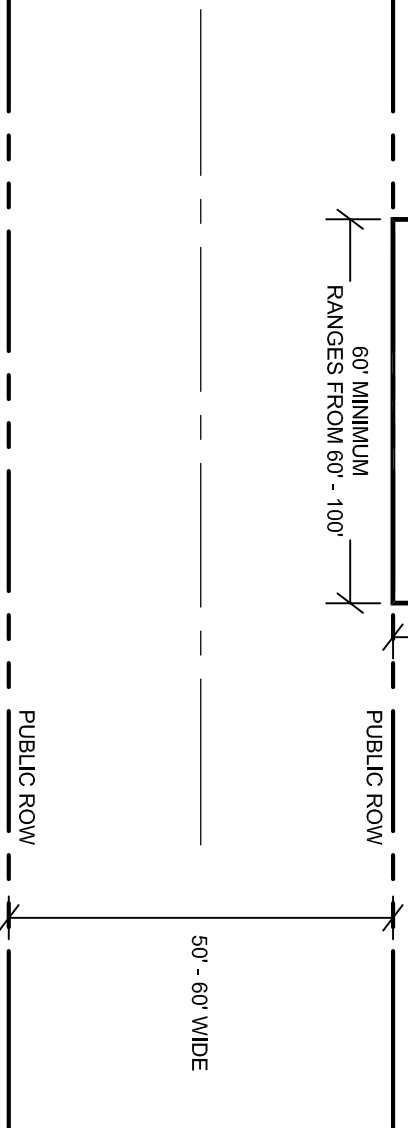
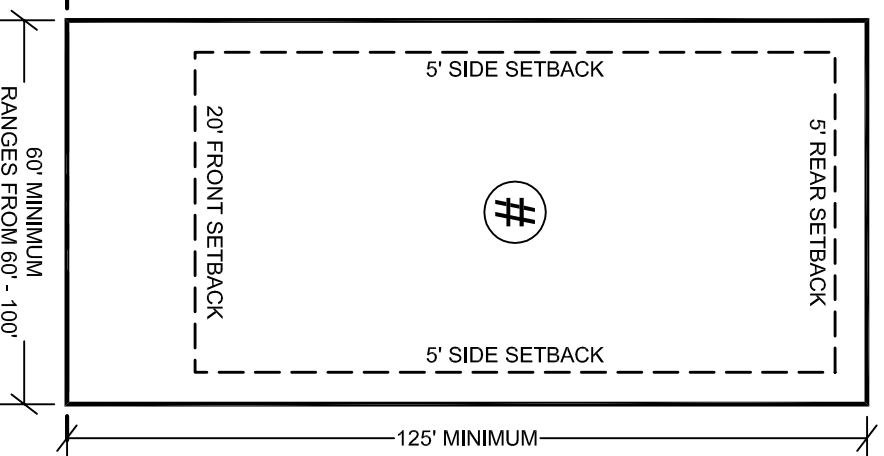
Legend	
	Reuse Spray Irrigation (Non-Conjunctive) (± 65 Ac.)
	Reuse Spray Irrigation (Conjunctive) (± 4 Ac.)
	Proposed Reuse Line (± 26,500 L.F.)
	Proposed Gravity Sewer (± 22,200 L.F.)
	Proposed Forcemain (± 11,200 L.F.)
	Proposed Waterline (± 32,000 L.F.)
	Existing Waterline

(Line Sizes to be Determined at Construction Drawing Stage)

307 GLENWOOD AVE, 220
RALEIGH, NC 27603
PHONE: 919-367-9790
FAX: 919-322-0032
www.cesgroupinc.com
License # C-1739



IMPERVIOUS RESTRICTIONS:
4,500 SF FOR 60' - 80' WIDE LOTS
6,000 SF FOR 100' WIDE LOTS



Typical Lot Layout

May 16, 2014
The Retreat At Haw River
Chatham County, NC



SCALE: 1" = 30'