



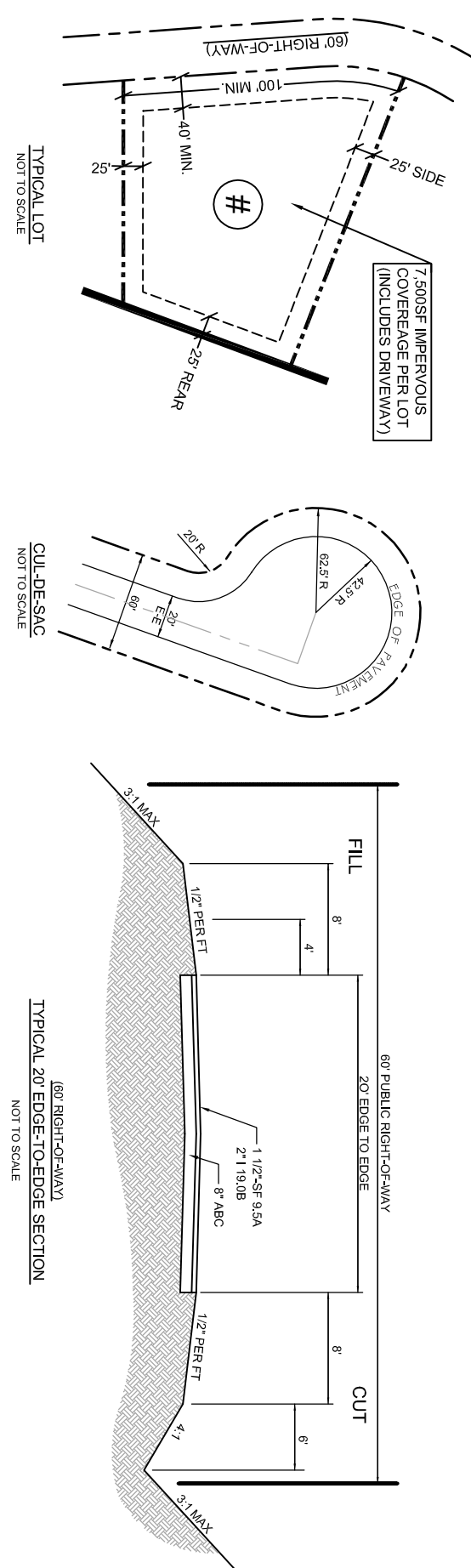
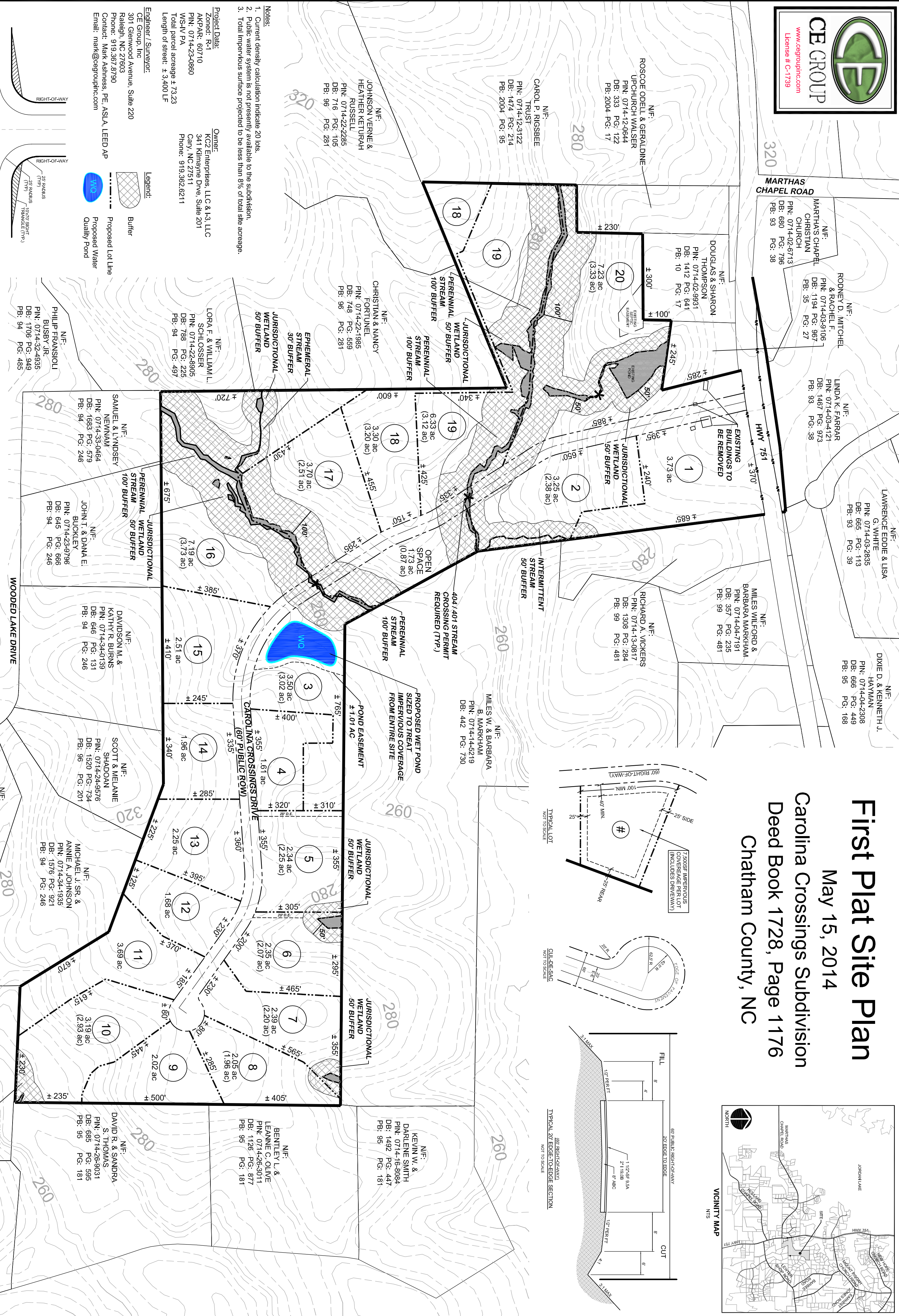
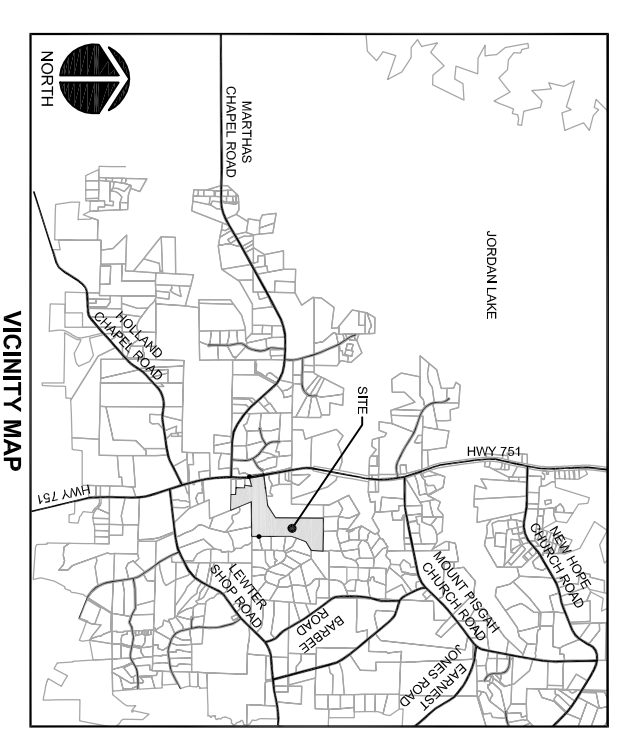
First Plat Site Plan

May 15, 2014

Carolina Crossings Subdivision

Deed Book 1728, Page 1176

Chatham County, NC

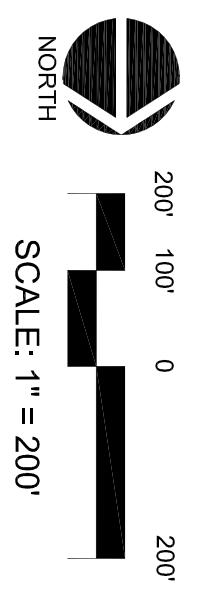
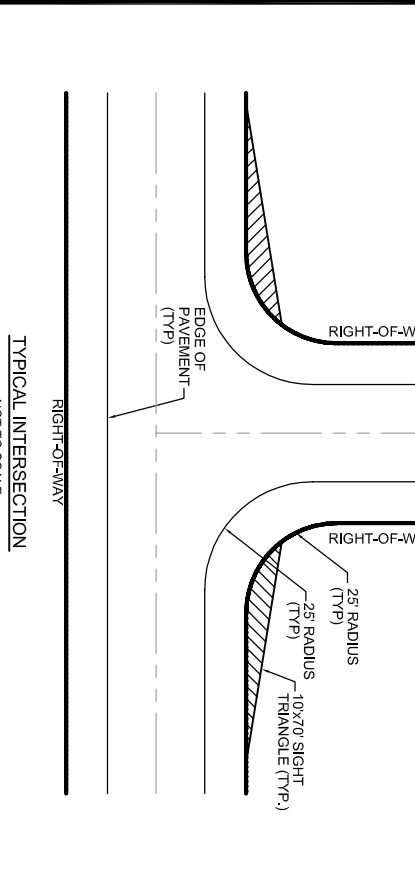
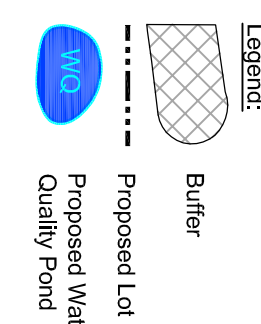


- Notes:
1. Current density calculation indicate 20 lots.
 2. Public water system is not presently available to the subdivision.
 3. Total impervious surface projected to be less than 8% of total site acreage.

Project Data:
 Zoned: R-1
 AKPAR: 60710
 PIN: 0714-23-0860
 WS-IV PA
 Total parcel acreage ± 73.23
 Length of street: ± 3,400 LF

Owner:
 KC2 Enterprises, LLC & I-3, LLC
 341 Kilmare Drive, Suite 201
 Cary, NC 27511
 Phone: 919.362.6211

Engineer / Surveyor:
 CE Group, Inc
 301 Glenwood Avenue, Suite 220
 Raleigh, NC 27603
 Phone: 919.367.8790
 Contact: Mark Asmussen, PE, ASLA, LEED AP
 Email: mark@cegroupinc.com



Adjacent Owners:

- ROSCOE ODELL & GERALDINE UPCHURCH WALSER:** PIN: 0714-12-0644, DB: 333, PG: 122, PB: 2004, PG: 17
- CAROL P. RIGSBEE TRUST:** PIN: 0714-12-3122, DB: 1474, PG: 214, PB: 2004, PG: 95
- JOHNSON VERNIE & HEATHER KETURAH RUSSELL:** PIN: 0714-22-2285, DB: 716, PG: 105, PB: 96, PG: 281
- CHRISTIAN & SHARON THOMPSON:** PIN: 0714-02-9931, DB: 1412, PG: 641, PB: 10, PG: 17
- DOUGLAS & SHARON THOMPSON:** PIN: 0714-02-9931, DB: 1412, PG: 641, PB: 10, PG: 17
- MARTHAS CHAPEL CHRISTIAN CHURCH:** PIN: 0714-02-6713, DB: 680, PG: 796, PB: 93, PG: 38
- RODNEY D. MITCHELL & RACHEL F. FARRAR:** PIN: 0714-03-9106, DB: 1194, PG: 967, PB: 35, PG: 27
- LINDA K. FARRAR:** PIN: 0714-03-4121, DB: 1467, PG: 973, PB: 93, PG: 38
- LAWRENCE EDDIE & LISA G. WHITE:** PIN: 0714-03-2835, DB: 665, PG: 113, PB: 93, PG: 39
- DIXIE D. & KENNETH J. HAYMAN:** PIN: 0714-04-2308, DB: 666, PG: 448, PB: 95, PG: 168
- MILES WILFORD & BARBARA MARKHAM:** PIN: 0714-04-7181, DB: 357, PG: 235, PB: 99, PG: 481
- RICHARD A. VICKERS:** PIN: 0714-13-0817, DB: 1308, PG: 1284, PB: 99, PG: 481
- MILES W. & BARBARA B. MARKHAM:** PIN: 0714-14-5219, DB: 442, PG: 730
- DAVIDSON M. & KATHY R. BURNS:** PIN: 0714-34-0139, DB: 646, PG: 131, PB: 94, PG: 246
- SCOTT & MELANIE SHADOAN:** PIN: 0714-24-9676, DB: 1520, PG: 734, PB: 96, PG: 201
- MICHAEL J. SR. & ANNIE A. JOHNSON:** PIN: 0714-34-1935, DB: 1576, PG: 921, PB: 94, PG: 246
- SCOTT D. & CYNTHIA MOLLENKOPF:** PIN: 0714-35-5699, DB: 1582, PG: 134, PB: 95, PG: 98
- DAVID R. & SANDRA S. THOMAS:** PIN: 0714-26-8031, DB: 685, PG: 595, PB: 95, PG: 181
- BENTLEY L. & LEANNE C. OLIVE:** PIN: 0714-26-3011, DB: 1126, PG: 877, PB: 95, PG: 181
- KENIN W. & DARLENE SMITH:** PIN: 0714-16-8084, DB: 1492, PG: 447, PB: 95, PG: 181
- SCOTT D. & CYNTHIA MOLLENKOPF:** PIN: 0714-35-5699, DB: 1582, PG: 134, PB: 95, PG: 98
- PATRICK M. & TAMARA J. MANHARD:** PIN: 0714-36-5242, DB: 673, PG: 104, PB: 95, PG: 181