

| N. SERENITY HILL CIRCLE (PUBLIC) |         |          |                      |
|----------------------------------|---------|----------|----------------------|
| Number                           | Length  | Radius   | Line/Chord Direction |
| L1                               | 214.394 |          | N3° 13' 12.53"W      |
| L2                               | 315.223 |          | N14° 00' 08.08"E     |
| L3                               | 435.824 |          | N9° 42' 28.15"E      |
| L4                               | 257.449 |          | N80° 47' 16.24"E     |
| L5                               | 115.069 |          | N80° 47' 16.24"E     |
| L6                               | 42.457  |          | S37° 41' 51.03"E     |
| L7                               | 353.489 |          | S18° 48' 08.90"W     |
| L8                               | 196.348 |          | S3° 30' 23.25"E      |
| C1                               | 120.235 | 400.000  | N5° 23' 27.77"E      |
| C2                               | 37.476  | 500.000  | N11° 51' 18.12"E     |
| C3                               | 198.493 | 160.000  | N45° 14' 52.19"E     |
| C4                               | 295.249 | 275.000  | S68° 27' 17.39"E     |
| C5                               | 320.486 | 325.000  | S9° 26' 51.06"E      |
| C6                               | 86.258  | 325.000  | S11° 11' 56.63"W     |
| C7                               | 224.159 | 1500.000 | S0° 46' 28.52"W      |
| C8                               | 119.998 | 500.000  | S3° 22' 08.04"W      |

| LONG HOLLOW DRIVE (PRIVATE) |         |         |                      |
|-----------------------------|---------|---------|----------------------|
| Number                      | Length  | Radius  | Line/Chord Direction |
| C18                         | 14.758  | 90.000  | N85° 29' 08.05"E     |
| C19                         | 52.566  | 60.000  | S64° 43' 05.38"E     |
| C20                         | 45.201  | 200.000 | S33° 08' 42.22"E     |
| L25                         | 48.614  |         | N80° 47' 16.24"E     |
| L26                         | 90.670  |         | S89° 49' 00.14"E     |
| L27                         | 123.769 |         | S39° 37' 10.62"E     |
| L28                         | 126.812 |         | S26° 40' 13.82"E     |

| WILBURN AVENUE (PRIVATE) |         |         |                      |
|--------------------------|---------|---------|----------------------|
| Number                   | Length  | Radius  | Line/Chord Direction |
| C22                      | 134.204 | 125.000 | S68° 27' 17.39"E     |
| C23                      | 172.569 | 175.000 | S9° 26' 51.06"E      |
| C24                      | 13.452  | 200.000 | S20° 43' 45.37"W     |
| L29                      | 80.139  |         | N80° 47' 16.24"E     |
| L30                      | 42.457  |         | S37° 41' 51.03"E     |
| L31                      | 323.262 |         | S18° 48' 08.90"W     |
| L32                      | 86.552  |         | S22° 39' 21.84"W     |

| MENA ROAD (PRIVATE) |         |        |                      |
|---------------------|---------|--------|----------------------|
| Number              | Length  | Radius | Line/Chord Direction |
| L33                 | 150.000 |        | N80° 47' 16.24"E     |

| WYND PATH (PRIVATE) |        |        |                      |
|---------------------|--------|--------|----------------------|
| Number              | Length | Radius | Line/Chord Direction |
| L34                 | 74.000 |        | S9° 12' 43.76"E      |

| SOUTHALL STREET (PRIVATE) |         |        |                      |
|---------------------------|---------|--------|----------------------|
| Number                    | Length  | Radius | Line/Chord Direction |
| L35                       | 150.573 |        | S71° 11' 51.10"E     |

| WISBOROUGH COURT (PRIVATE) |         |        |                      |
|----------------------------|---------|--------|----------------------|
| Number                     | Length  | Radius | Line/Chord Direction |
| L36                        | 136.647 |        | S12° 02' 8.17"W      |
| C25                        | 33.259  | 24.000 | S27° 40' 50.19"E     |
| L37                        | 96.535  |        | S67° 23' 48.55"E     |

| SILVERBELL LANE (PRIVATE) |         |        |                      |
|---------------------------|---------|--------|----------------------|
| Number                    | Length  | Radius | Line/Chord Direction |
| L38                       | 219.498 |        | S3° 30' 23.25"E      |

| PORTHAVEN PLACE (PRIVATE) |         |        |                      |
|---------------------------|---------|--------|----------------------|
| Number                    | Length  | Radius | Line/Chord Direction |
| L39                       | 165.079 |        | S80° 17' 31.85"E     |

| VANOLINDA LANE (PRIVATE) |         |        |                      |
|--------------------------|---------|--------|----------------------|
| Number                   | Length  | Radius | Line/Chord Direction |
| L40                      | 180.479 |        | S13° 59' 36.27"W     |

| PRESERVATION LANE (PRIVATE) |        |        |                      |
|-----------------------------|--------|--------|----------------------|
| Number                      | Length | Radius | Line/Chord Direction |
| L41                         | 93.085 |        | S0° 54' 37.44"W      |

| BRIAR CHAPEL PARKWAY NORTH (PUBLIC) |         |         |                      |
|-------------------------------------|---------|---------|----------------------|
| Number                              | Length  | Radius  | Line/Chord Direction |
| C26                                 | 855.968 | 930.000 | N77° 26' 40.13"E     |
| L42                                 | 193.122 |         | S76° 11' 77.22"E     |
| C27                                 | 208.708 | 970.000 | S82° 21' 07.46"E     |
| L43                                 | 297.266 |         | S88° 30' 57.71"E     |

| BRIAR CHAPEL PARKWAY SOUTH (PUBLIC) |         |          |                      |
|-------------------------------------|---------|----------|----------------------|
| Number                              | Length  | Radius   | Line/Chord Direction |
| C28                                 | 800.745 | 870.000  | N77° 26' 40.13"E     |
| L44                                 | 193.122 |          | S76° 11' 77.22"E     |
| C29                                 | 221.618 | 1030.000 | S82° 21' 07.46"E     |
| L45                                 | 297.229 |          | S88° 30' 57.71"E     |

| CROSS MEADOW DRIVE (PRIVATE) |         |        |                      |
|------------------------------|---------|--------|----------------------|
| Number                       | Length  | Radius | Line/Chord Direction |
| L48                          | 232.588 |        | S13° 48' 42.78"W     |

| SUMMERSWEET LANE (PUBLIC) AND ALLEY O (PRIVATE) |         |          |                      |
|---|---------|----------|----------------------|
| Number  | Length  | Radius   | Line/Chord Direction |
| C9  | 154.079 | 1229.000 | S79° 46' 46.87"E     |
| L9  | 224.543 |          | S83° 22' 16.52"E     |
| L10   | 125.868 |          | S76° 11' 17.22"E     |
| L11   | 44.797  |          | S76° 11' 17.22"E     |
| C30   | 41.626  | 26.500   | N58° 48' 43.00"E     |
| L46   | 10.389  |          | N13° 48' 43.00"E     |
| C31   | 42.448  | 26.500   | N32° 4' 35.00"W      |
| L47   | 45.919  |          | N77° 57' 52.00"W     |

| TOBACCO FARM WAY (PUBLIC) |         |          |                      |
|---------------------------|---------|----------|----------------------|
| Number                    | Length  | Radius   | Line/Chord Direction |
| C10                       | 199.788 | 650.000  | S67° 40' 04.02"E     |
| C11                       | 321.014 | 1500.000 | S64° 59' 35.90"E     |
| L12                       | 323.835 |          | S76° 28' 23.42"E     |

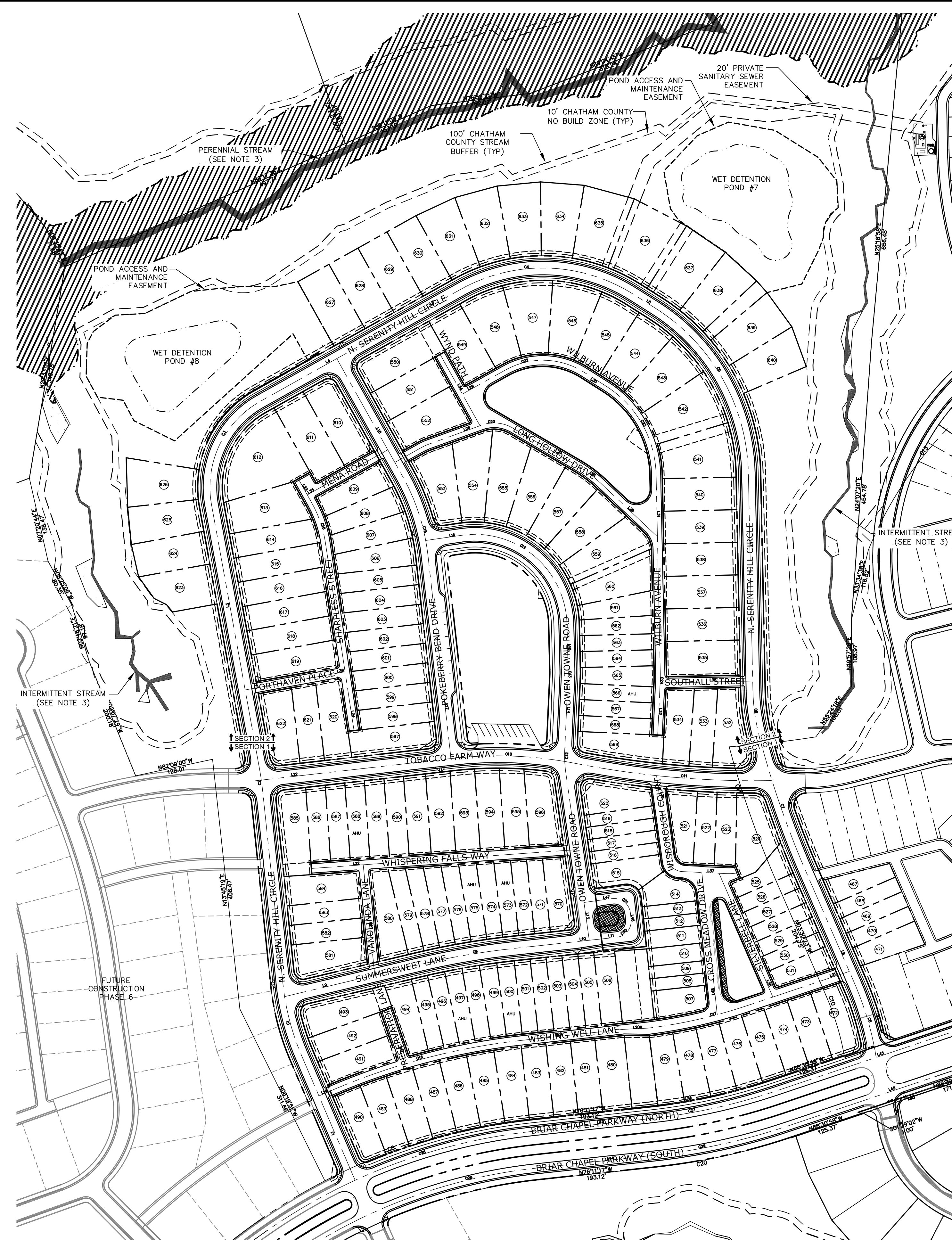
| OWEN TOWNE ROAD (PUBLIC) |         |         |                      |
|--------------------------|---------|---------|----------------------|
| Number                   | Length  | Radius  | Line/Chord Direction |
| C12                      | 13.889  | 200.000 | N20° 36' 07.42"E     |
| C13                      | 253.672 | 150.000 | N29° 50' 08.61"W     |
| C14                      | 36.847  | 200.000 | N17° 18' 48.91"E     |
| L13                      | 275.237 |         | N12° 02' 08.17"E     |
| L14                      | 117.724 |         | N22° 35' 29.65"E     |
| L15                      | 72.839  |         | N18° 36' 43.30"E     |
| L16                      | 58.780  |         | N78° 17' 00.52"W     |

| POKEBERRY BEND DRIVE (PUBLIC) |         |         |                      |
|-------------------------------|---------|---------|----------------------|
| Number                        | Length  | Radius  | Line/Chord Direction |
| C15                           | 136.920 | 345.000 | N2° 09' 26.41"E      |
| L17                           | 332.402 |         | N13° 31' 36.58"E     |
| L18                           | 218.334 |         | N9° 12' 43.76"W      |

| WISHING WELL LANE (PRIVATE) |         |          |                      |
|-----------------------------|---------|----------|----------------------|
| Number                      | Length  | Radius   | Line/Chord Direction |
| C16                         | 320.814 | 1079.172 | S84° 42' 16.23"E     |
| C17                         | 164.306 | 823.500  | S82° 48' 00.63"E     |
| L19                         | 23.441  |          | N86° 46' 44.75"E     |
| L20                         | 165.479 |          | S76° 11' 17.22"E     |
| L20A                        | 40.483  |          | S72° 47' 25.61"E     |
| L21                         | 175.916 |          | S88° 30' 57.71"E     |

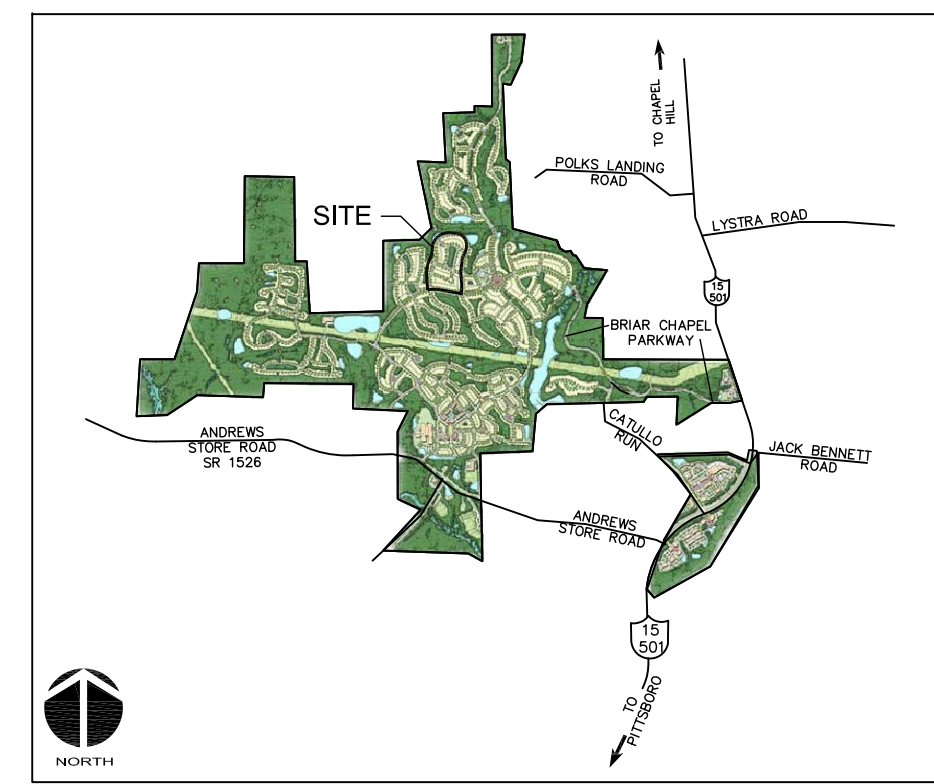
| WHISPERING FALLS WAY (PRIVATE) |         |        |                      |
|--------------------------------|---------|--------|----------------------|
| Number                         | Length  | Radius | Line/Chord Direction |
| L22                            | 432.233 |        | S74° 02' 50.55"E     |

| SHARPLESS STREET (PRIVATE) |         |         |                      |
|----------------------------|---------|---------|----------------------|
| Number                     | Length  | Radius  | Line/Chord Direction |
| L23                        | 42.675  |         | S9° 12' 43.76"E      |
| L24                        | 309.387 |         | S11° 20' 29.28"W     |
| C21                        | 68.158  | 190.000 | S1° 03' 52.76"W      |



**NOTES:**

- ALL DIMENSIONS AND GRADES SHOWN ON THE PLANS SHALL BE FIELD VERIFIED BY THE CONTRACTOR PRIOR TO CONSTRUCTION. CONTRACTOR SHALL NOTIFY OWNER IF ANY DISCREPANCIES EXIST PRIOR TO CONSTRUCTION. NO ADDITIONAL COMPENSATION WILL BE PAID TO THE CONTRACTOR FOR ANY WORK DONE DUE TO DIMENSIONS OR GRADES SHOWN INCORRECTLY ON THE PLANS IF SUCH NOTIFICATION HAS NOT BEEN GIVEN.
- EXISTING INFRASTRUCTURE AS SHOWN MAY BE UNDER CONSTRUCTION AND SHALL BE FIELD VERIFIED BY CONTRACTOR. REFER TO THE FOLLOWING JOHN R. MCADAMS BRIAR CHAPEL PLANS AND CONSTRUCTION BULLETINS FOR ADDITIONAL INFORMATION:
  - RECLAMATION FACILITY EROSION CONTROL PLAN, SEALED JULY 29, 2005
  - PHASE 1 CONSTRUCTION PLANS, SEALED OCT 21, 2005
  - WEST EXTENSION GRADING PLAN (INTERIM), SEALED MAR 1, 2007
  - PHASE 3 CONSTRUCTION PLANS, SEALED DEC 4, 2006
  - PHASE 4 CONSTRUCTION PLANS, SEALED JAN 15, 2007
  - WATER QUALITY PONDS 5 AND 6 CONSTRUCTION PLANS, SEALED AUG 24, 2006
  - PUMP STATION CONSTRUCTION PLANS, DATED APR 3, 2006
  - PHASE 4 - POD D CONSTRUCTION PLANS, SEALED SEP 17, 2007
  - PHASE 3 & 4 EROSION CONTROL PLANS, SEALED JULY 26, 2007
- STREAM AND WETLAND LOCATIONS ARE BASED ON DELINEATIONS PROVIDED BY SOIL AND ENVIRONMENTAL CONSULTANTS IN RALEIGH, NC - CONTACT NIKKI THOMSON AT 919-846-5900.
- A PORTION OF THIS PROPERTY IS LOCATED IN SPECIAL FLOOD HAZARD AREA "AE" AS SHOWN ON FEMA FIRM MAP #3710976500J DATED FEBRUARY 2, 2007.
- ALL PROPOSED ROADWAY DIMENSIONS AS SHOWN ARE MEASURED FROM BACK OF CURB TO BACK OF CURB. ALL PROPOSED ALLEY DIMENSIONS AS SHOWN ARE MEASURED FROM EDGE OF PAVEMENT TO EDGE OF PAVEMENT, UNLESS NOTED OTHERWISE.
- BEFORE STARTING ANY CONSTRUCTION OF IMPROVEMENTS WITHIN ANY NCDOT STREET OR HIGHWAY RIGHT-OF-WAY, CONTACT NCDOT DISTRICT OFFICE AND OBTAIN ALL PERMITS AND ENCROACHMENTS. KEEP COPIES ON CONSTRUCTION SITE. ALSO CONTACT NCDOT DISTRICT OFFICE 24 HOURS IN ADVANCE BEFORE PLACING CURB AND GUTTER AT 336-629-1423.
- REFER TO PLAN AND PROFILE SHEETS FOR DETAILED SANITARY SEWER AND STORM DRAINAGE INFORMATION WITHIN PUBLIC ROADS AND PRIVATE ALLEYS.
- CONTRACTOR TO ENSURE SMOOTH TIE-IN FROM PUBLIC ROADWAY CURB AND GUTTER TO ASPHALT IN PRIVATE ALLEYS.



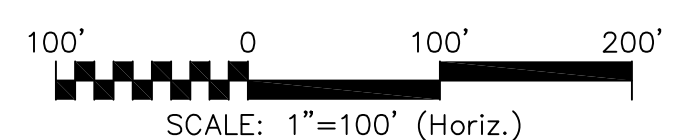
**LEGEND**

- EXISTING WETLANDS
- EXISTING STREAM CHANNEL
- NEW PAVEMENT
- ROADWAY CENTERLINE
- LOT LINE
- EXISTING ROW
- 100-YEAR FLOODPLAIN
- 100-YEAR FLOODPLAIN AREA
- 50' CHATHAM COUNTY STREAM BUFFER
- 10' NO BUILD ZONE BUFFER
- 4' H.O.A. EASEMENT
- 4' PRIVATE UTILITY EASEMENT
- ACCESSIBLE RAMP
- OVERALL PROPERTY LINE
- AHU AFFORDABLE HOUSING UNIT

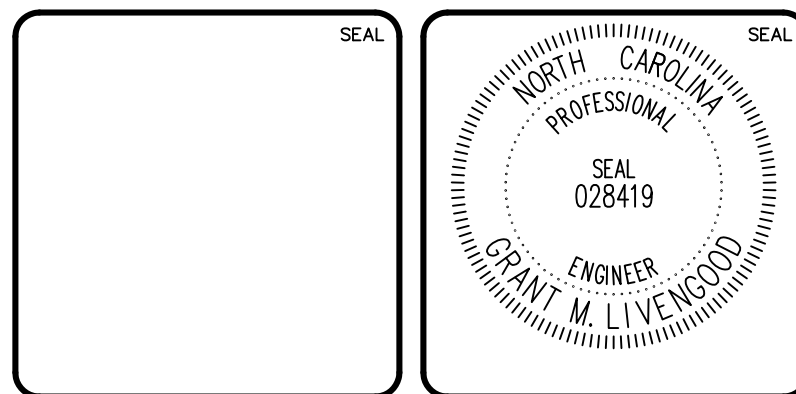
**LOT SUMMARY:**

|                            |            |
|----------------------------|------------|
| SECTION 1                  | 0          |
| • 50' LOTS                 | 30         |
| • 40' LOTS                 | 15         |
| • 32' LOTS                 | 28         |
| • 26' LOTS                 | 14         |
| • TOWNHOME LOTS            | 5          |
| • AFFORDABLE HOUSING UNITS |            |
| <b>SUBTOTAL</b>            | <b>92</b>  |
| SECTION 2                  | 40         |
| • 50' LOTS                 | 17         |
| • 40' LOTS                 | 16         |
| • 32' LOTS                 | 8          |
| • 26' LOTS                 | 0          |
| • TOWNHOME LOTS            | 1          |
| • AFFORDABLE HOUSING UNITS |            |
| <b>SUBTOTAL</b>            | <b>82</b>  |
| <b>TOTAL</b>               | <b>174</b> |

CALL N.C. ONE  
CALL CENTER  
BEFORE YOU DIG  
**STOP**  
1-800-632-4949  
AVOID UTILITY  
DAMAGE



| REV. NO. | DESCRIPTION                | DATE       |
|----------|----------------------------|------------|
| A        | REVISED AFTER CONSTRUCTION | 2014.01.08 |



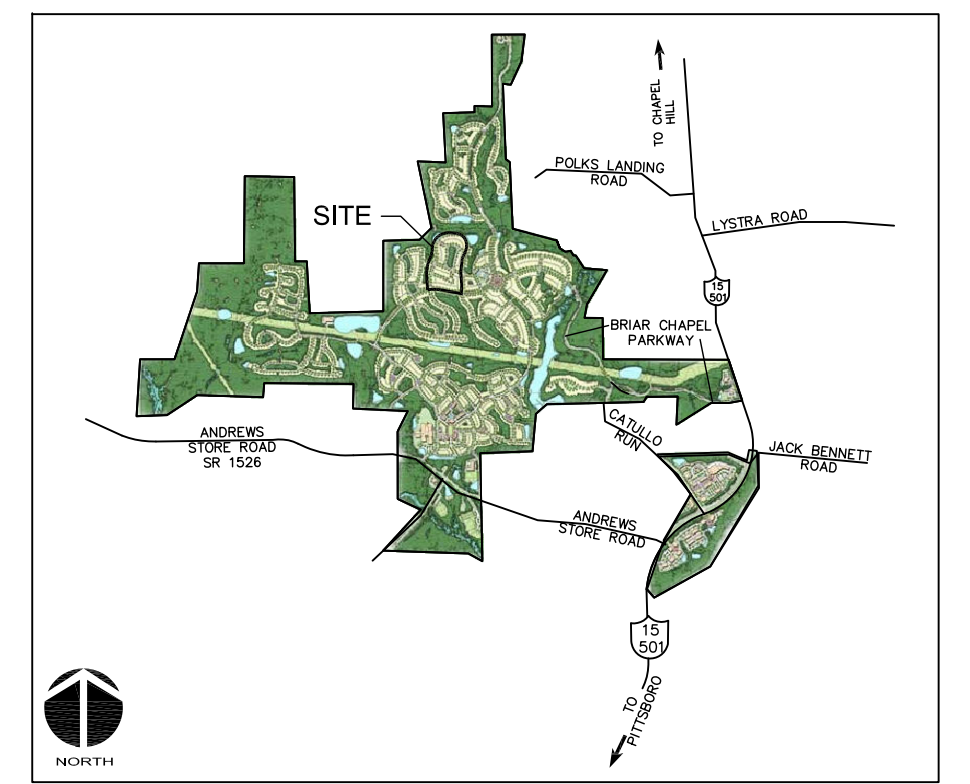
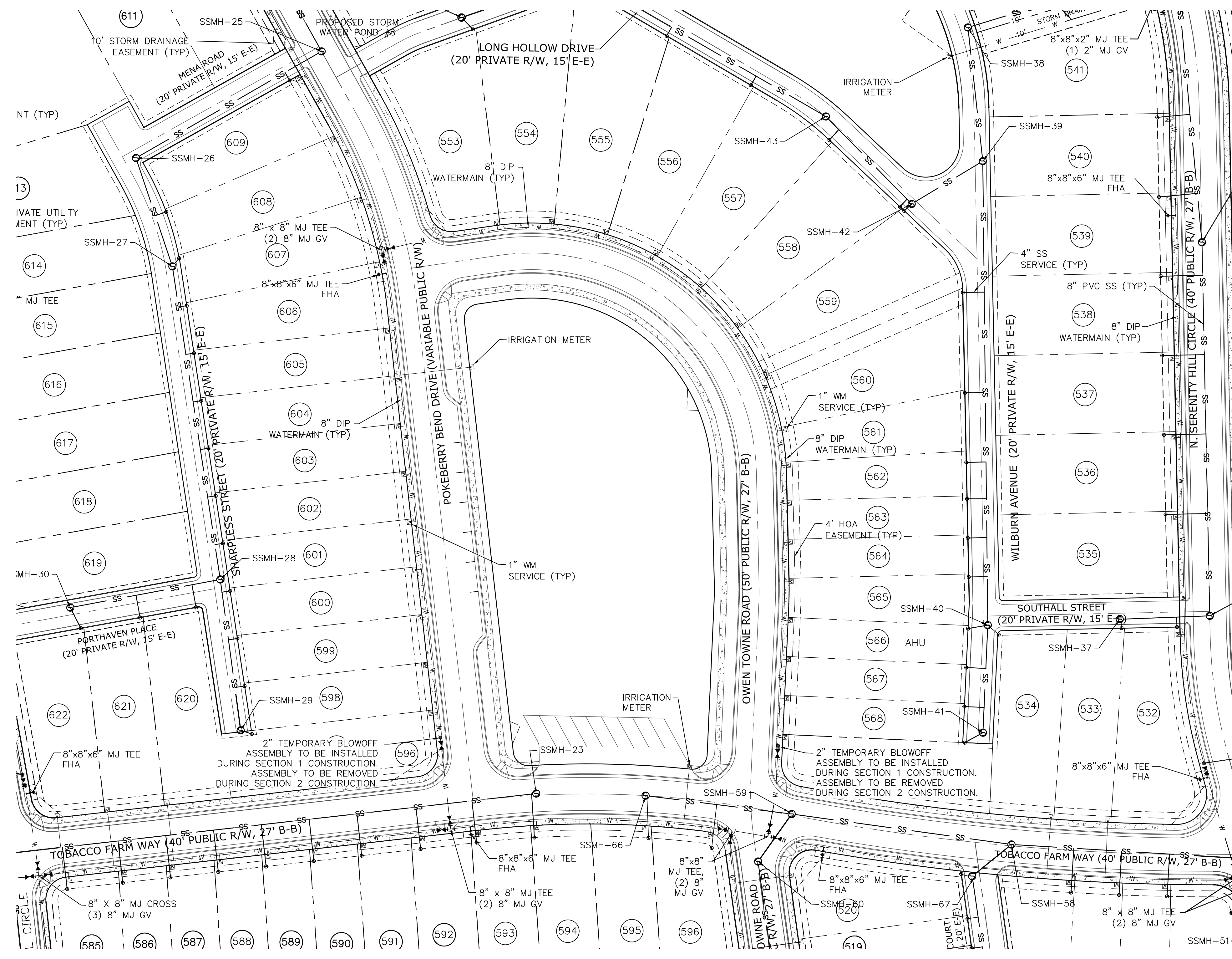
**MCKIM & CREED**  
1730 Varsity Drive, Suite 500  
Raleigh, North Carolina 27606  
Phone: (919)233-8091, Fax: (919)233-8031  
C-0342  
www.mckimcreed.com

**BRIAR CHAPEL™**  
by  
Newland COMMUNITIES

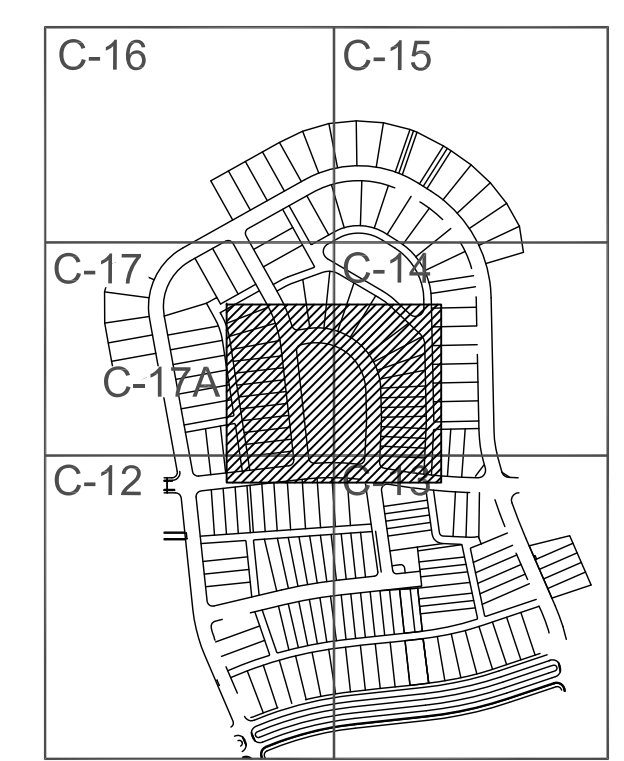
**BRIAR CHAPEL  
PHASE 5 NORTH  
CHATHAM COUNTY, NORTH CAROLINA**  
**OVERALL SITE PLAN**

|                                    |                              |                        |
|------------------------------------|------------------------------|------------------------|
| DATE: NOVEMBER 5, 2010             | SCALE: HORIZONTAL: 1" = 100' | MAC FILE NUMBER: CS101 |
| MCE PROJ. # 02735-0069             | VERTICAL: NA                 | DRAWING NUMBER: C-3A   |
| DRAWN: CMB                         |                              |                        |
| DESIGNED: CMB                      |                              |                        |
| CHECKED: GML                       |                              |                        |
| PROJ. MGR.: GML                    |                              |                        |
| STATUS: REVISED AFTER CONSTRUCTION | REVISION: A                  |                        |





VICINITY MAP  
NOT TO SCALE

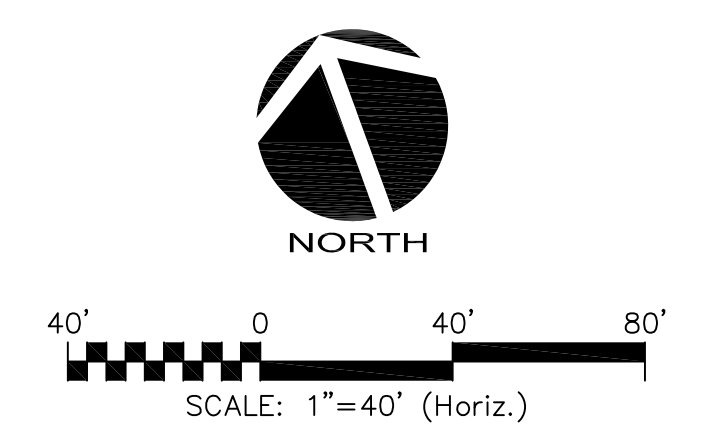


KEY MAP  
NOT TO SCALE

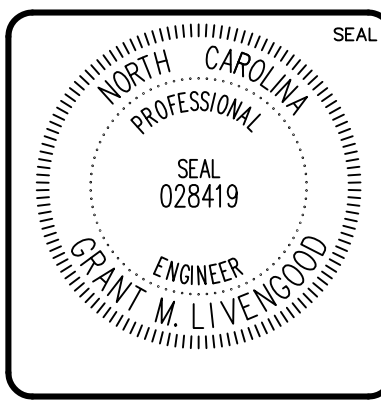
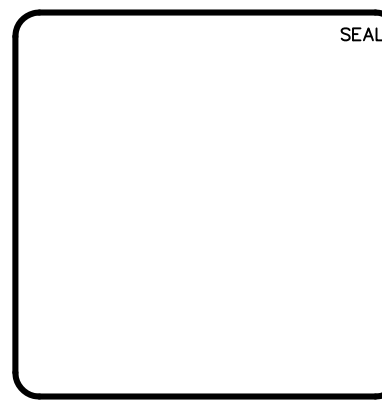
LEGEND

- SS SANITARY SEWER LINE
- W WATER MAIN
- SS EXISTING SANITARY SEWER LINE
- W EXISTING WATER MAIN
- ⊙ SANITARY SEWER MANHOLE
- ⊗ SANITARY SEWER CLEANOUT
- ⊠ WATER METER
- ⊕ BLOWOFF VALVE ASSEMBLY
- ⊙ FIRE HYDRANT ASSEMBLY (FHA)
- ROADWAY CENTERLINE
- ROW
- LOT LINE
- 50' CHATHAM COUNTY STREAM BUFFER
- 10' NO BUILD ZONE BUFFER
- 4' H.O.A. EASEMENT
- 4' PRIVATE UTILITY EASEMENT
- 100-YEAR FLOODPLAIN
- 100-YEAR FLOODPLAIN AREA
- EXISTING WETLANDS
- EXISTING STREAM CHANNEL

NOTES  
 1. SEE SHEET C-3 FOR SITE PLAN NOTES.  
 2. REFER TO PLAN AND PROFILE SHEETS FOR DETAILED SANITARY SEWER AND STORM DRAINAGE INFORMATION WITHIN PUBLIC ROADS AND PRIVATE ALLEYS.



| REVNO. | DESCRIPTION                | DATE       |
|--------|----------------------------|------------|
| A      | REVISED AFTER CONSTRUCTION | 2014.01.08 |



**MCKIM & CREED**  
 1730 Varsity Drive, Suite 500  
 Raleigh, North Carolina 27606  
 Phone: (919)233-8091, Fax: (919)233-8031  
 C-0342  
 www.mckimcreed.com

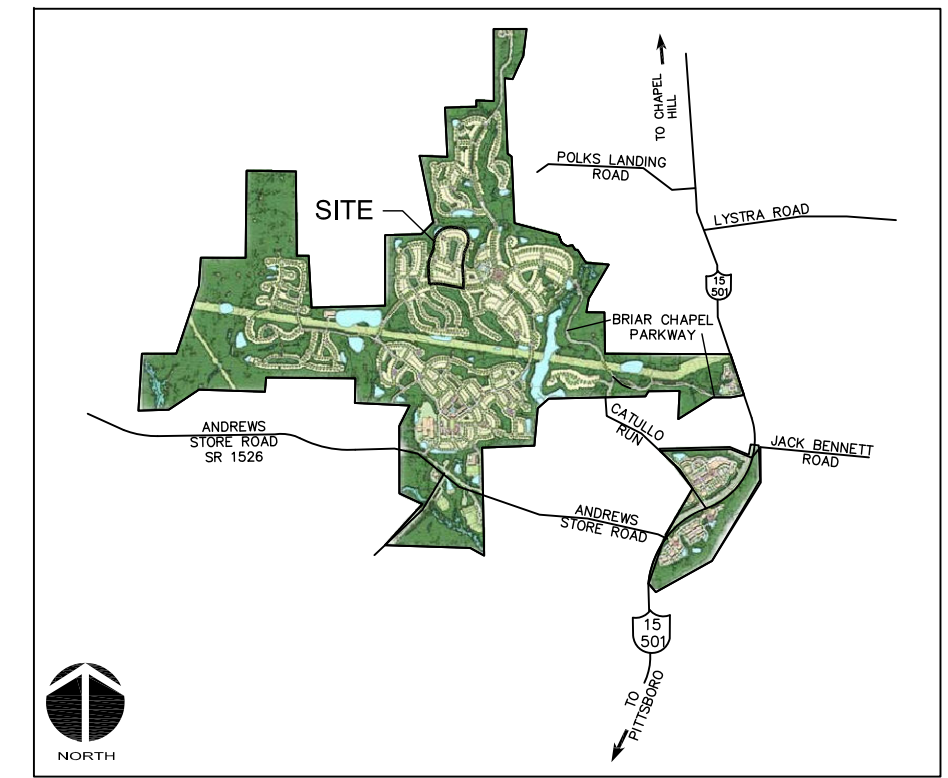
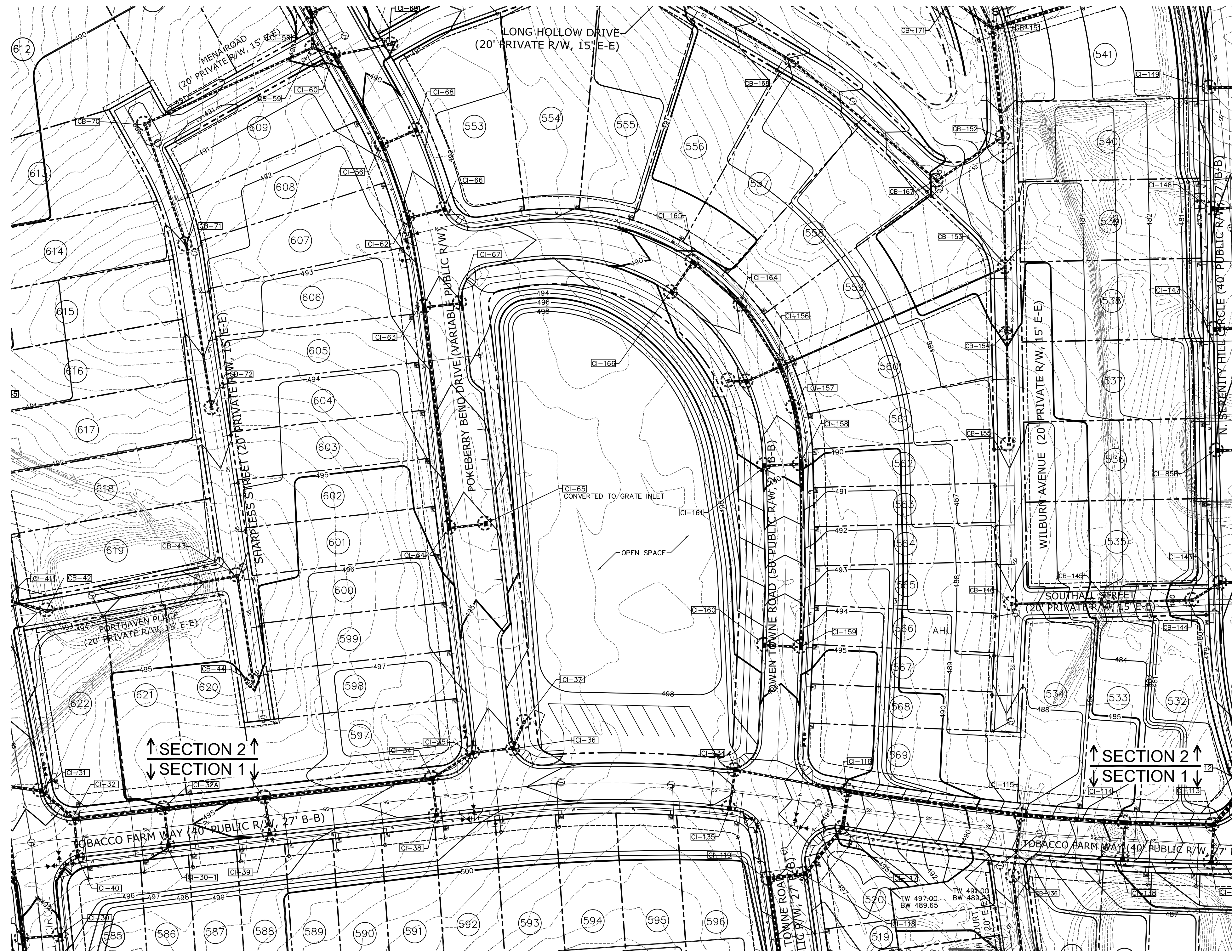
**BRIAR CHAPEL™**  
 by  
 Newland COMMUNITIES

**BRIAR CHAPEL  
 PHASE 5 NORTH - SECTION 2  
 CHATHAM COUNTY, NORTH CAROLINA**

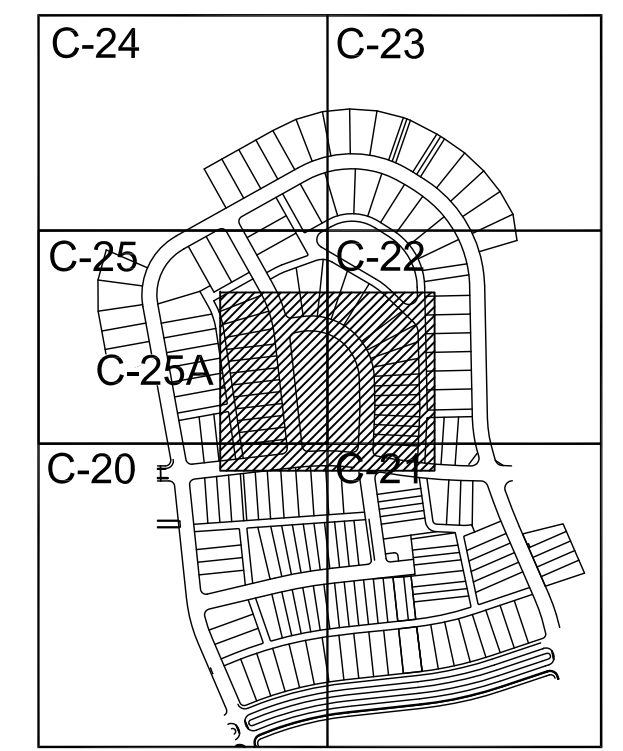
UTILITY PLAN

|                        |                             |                        |
|------------------------|-----------------------------|------------------------|
| DATE: NOVEMBER 5, 2010 | SCALE: HORIZONTAL: 1" = 40' | MAC FILE NUMBER: CU101 |
| MCE PROJ. # 02735-0069 | VERTICAL: NA                | DRAWING NUMBER: C-17A  |
| DRAWN: CMB             |                             |                        |
| DESIGNED: CMB          |                             |                        |
| CHECKED: GML           |                             |                        |
| PROJ. MGR.: GML        |                             |                        |

STATUS: REVISED AFTER CONSTRUCTION  
 REVISION: A



VICINITY MAP  
NOT TO SCALE



KEY MAP  
NOT TO SCALE

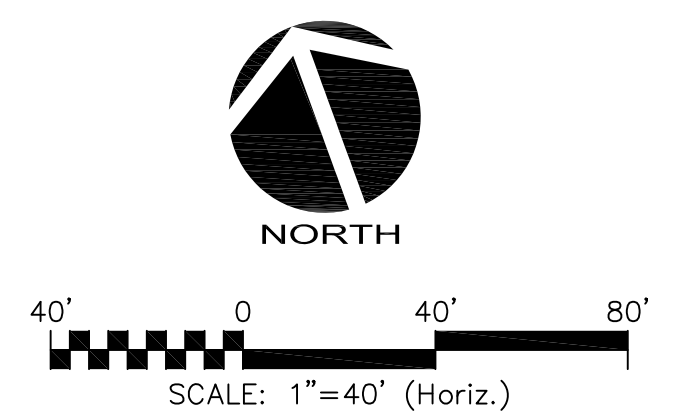
LEGEND:

- EXISTING WETLANDS
- EXISTING STREAM CHANNEL
- BLOCK & GRAVEL PIPE INLET PROTECTION
- RIP RAP OUTLET PROTECTION
- TEMPORARY CONSTRUCTION ENTRANCE
- EXISTING SILT FENCE
- LIMITS OF DISTURBANCE
- DIVERSION DITCH
- TREE PROTECTION FENCE
- COMBINATION SILT FENCE/TREE PROTECTION FENCE
- SILT FENCE OUTLET
- EXISTING CONTOUR
- PROPOSED CONTOUR
- TEMPORARY DIVERSION DITCH
- CHECK DAM
- BAFFLE
- TEMPORARY PIPE
- PERMANENT STORM DRAINAGE PIPE

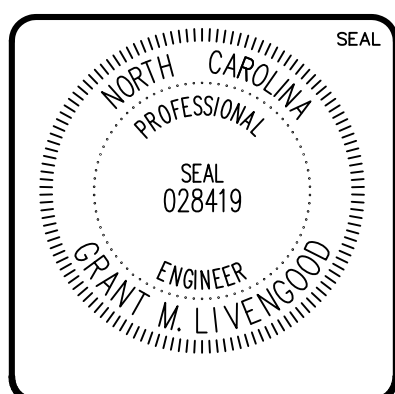
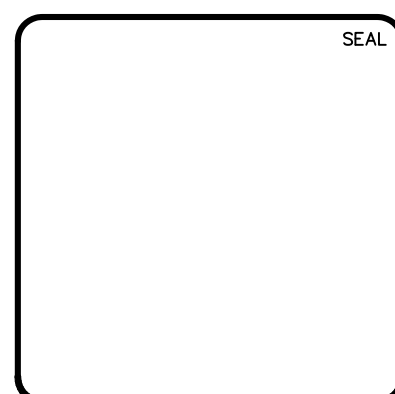


NOTES:

1. SEE SHEET C-19 FOR CONSTRUCTION SEQUENCE, RETAINING WALL NOTES, GENERAL NOTES, STORM DRAINAGE NOTES, LIMITS OF DISTURBANCE NOTES AND TREE SAVE NOTES.
2. REFER TO PLAN & PROFILE SHEETS FOR DETAILED SANITARY SEWER, STORM DRAINAGE AND WATER LINE INFORMATION WITHIN PUBLIC ROADS AND PRIVATE ALLEYS.
3. SEE SHEET D-6 FOR RETAINING WALL DETAILS.



| REV. NO. | DESCRIPTION                | DATE       |
|----------|----------------------------|------------|
| A        | REVISED AFTER CONSTRUCTION | 2014.01.06 |



**MCKIM & CREED**  
 1730 Varsity Drive, Suite 500  
 Raleigh, North Carolina 27606  
 Phone: (919)233-8091, Fax: (919)233-8031  
 C-0342  
 www.mckimcreed.com

**BRIAR CHAPEL™**  
 by  
**Newland COMMUNITIES**

**BRIAR CHAPEL  
 PHASE 5 NORTH - SECTION 2  
 CHATHAM COUNTY, NORTH CAROLINA**

**GRADING, DRAINAGE &  
 STAGE 2 EROSION CONTROL PLAN**

|                                    |                             |                        |
|------------------------------------|-----------------------------|------------------------|
| DATE: NOVEMBER 5, 2010             | SCALE: HORIZONTAL: 1" = 40' | M&C FILE NUMBER: CG101 |
| MCE PROJ. # 02735-0069             | VERTICAL: NA                | DRAWING NUMBER: C-25A  |
| DRAWN: CMB                         |                             |                        |
| DESIGNED: CMB                      |                             |                        |
| CHECKED: GML                       |                             |                        |
| PROJ. MGR: GML                     |                             |                        |
| STATUS: REVISED AFTER CONSTRUCTION | REVISION: A                 |                        |