



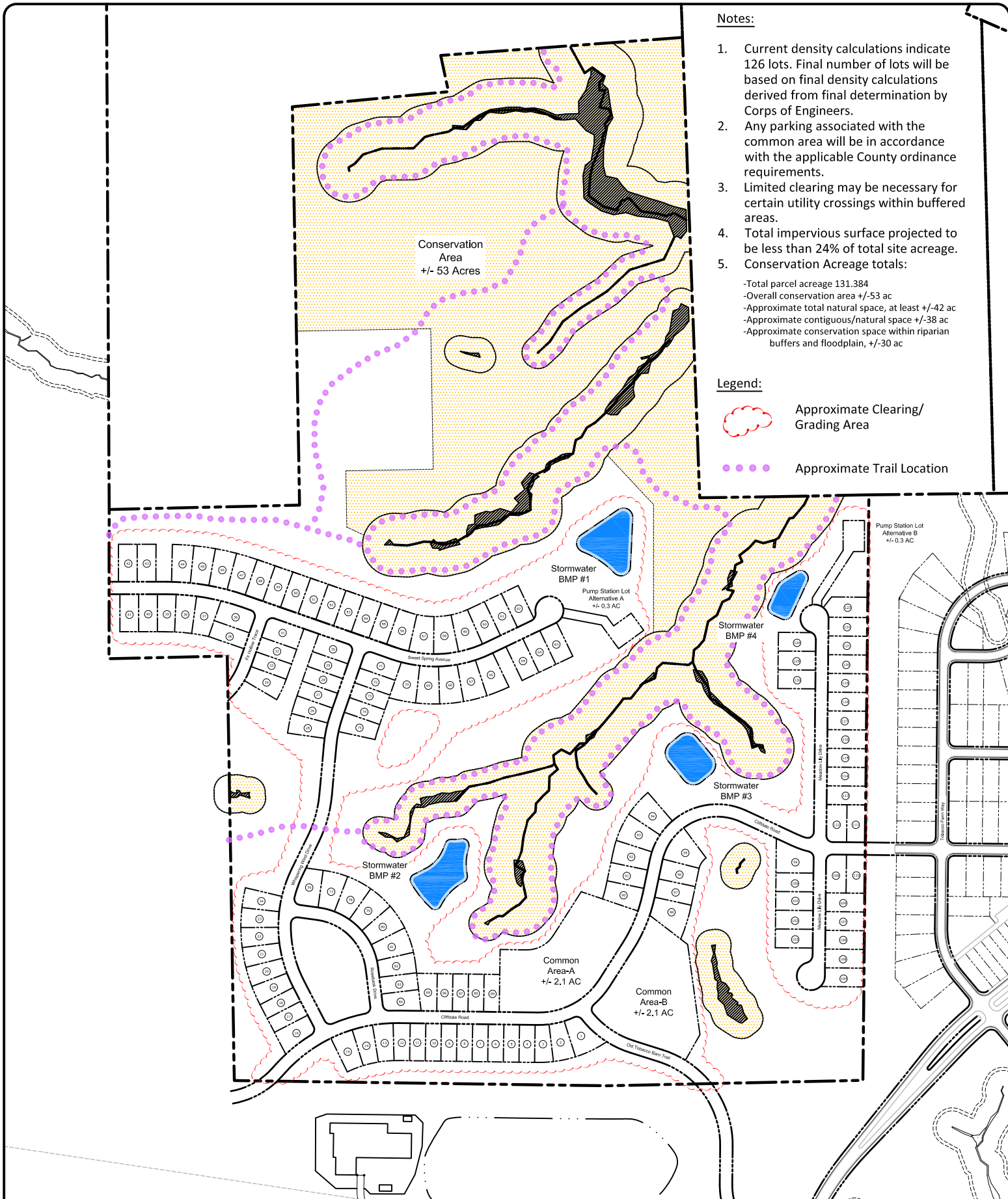
Notes:

1. Current density calculations indicate 126 lots. Final number of lots will be based on final density calculations derived from final determination by Corps of Engineers.
2. Any parking associated with the common area will be in accordance with the applicable County ordinance requirements.
3. Limited clearing may be necessary for certain utility crossings within buffered areas.
4. Total impervious surface projected to be less than 24% of total site acreage.
5. Conservation Acreage totals:

- Total parcel acreage 131.384
- Overall conservation area +/- 53 ac
- Approximate total natural space, at least +/- 42 ac
- Approximate contiguous/natural space +/- 38 ac
- Approximate conservation space within riparian buffers and floodplain, +/- 30 ac

Legend:

-  Approximate Clearing/Grading Area
-  Approximate Trail Location

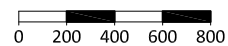


Owner: NNP-Briar Chapel, LLC
Book 1722, Page 1163

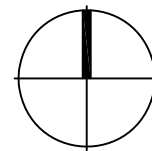
US Steel Tract-Parcel No. 2177

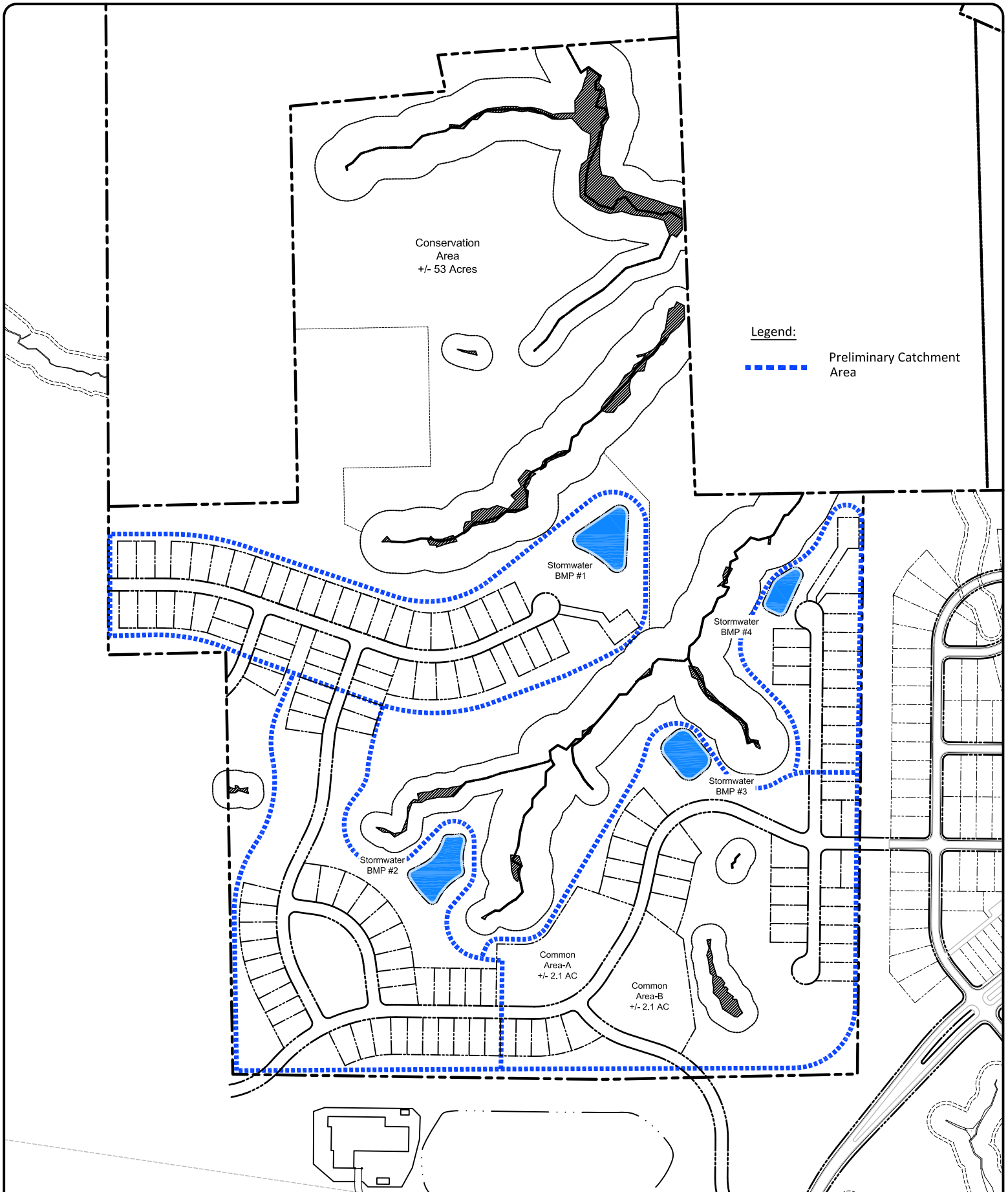
Site Plan

Scale: 1"=400'



Date:
March 19, 2014





Owner: NNP-Briar Chapel, LLC
Book 1722, Page 1163

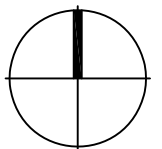
US Steel Tract-Parcel No. 2177

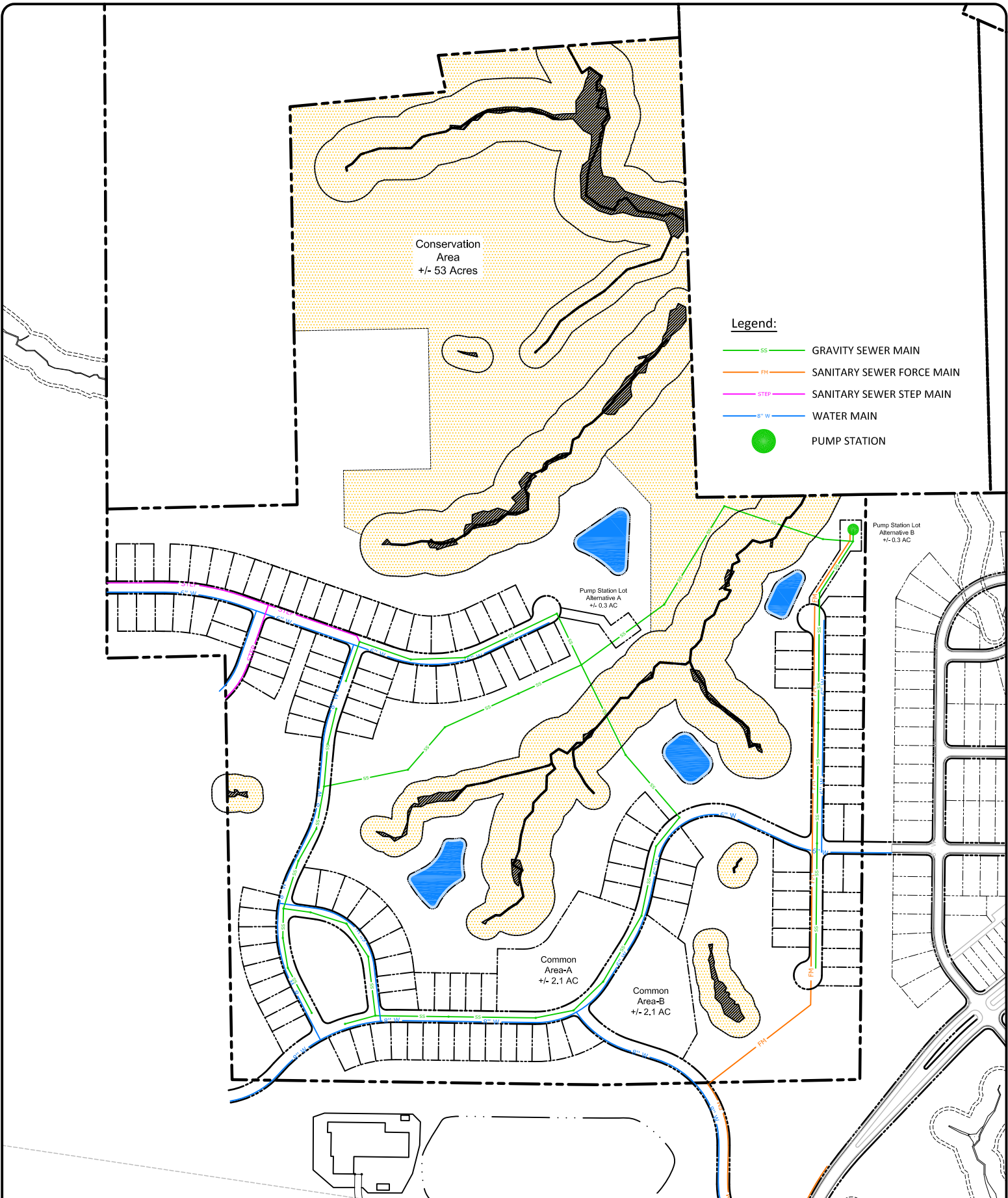
Drainage Plan

Scale: 1"=400'



Date:
March 19, 2014





Legend:

- SS GRAVITY SEWER MAIN
- FM SANITARY SEWER FORCE MAIN
- STEP SANITARY SEWER STEP MAIN
- 8" W WATER MAIN
- PUMP STATION

Owner: NNP-Briar Chapel, LLC
Book 1722, Page 1163

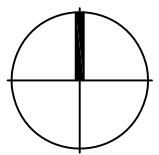
US Steel Tract-Parcel No. 2177

Utility Plan

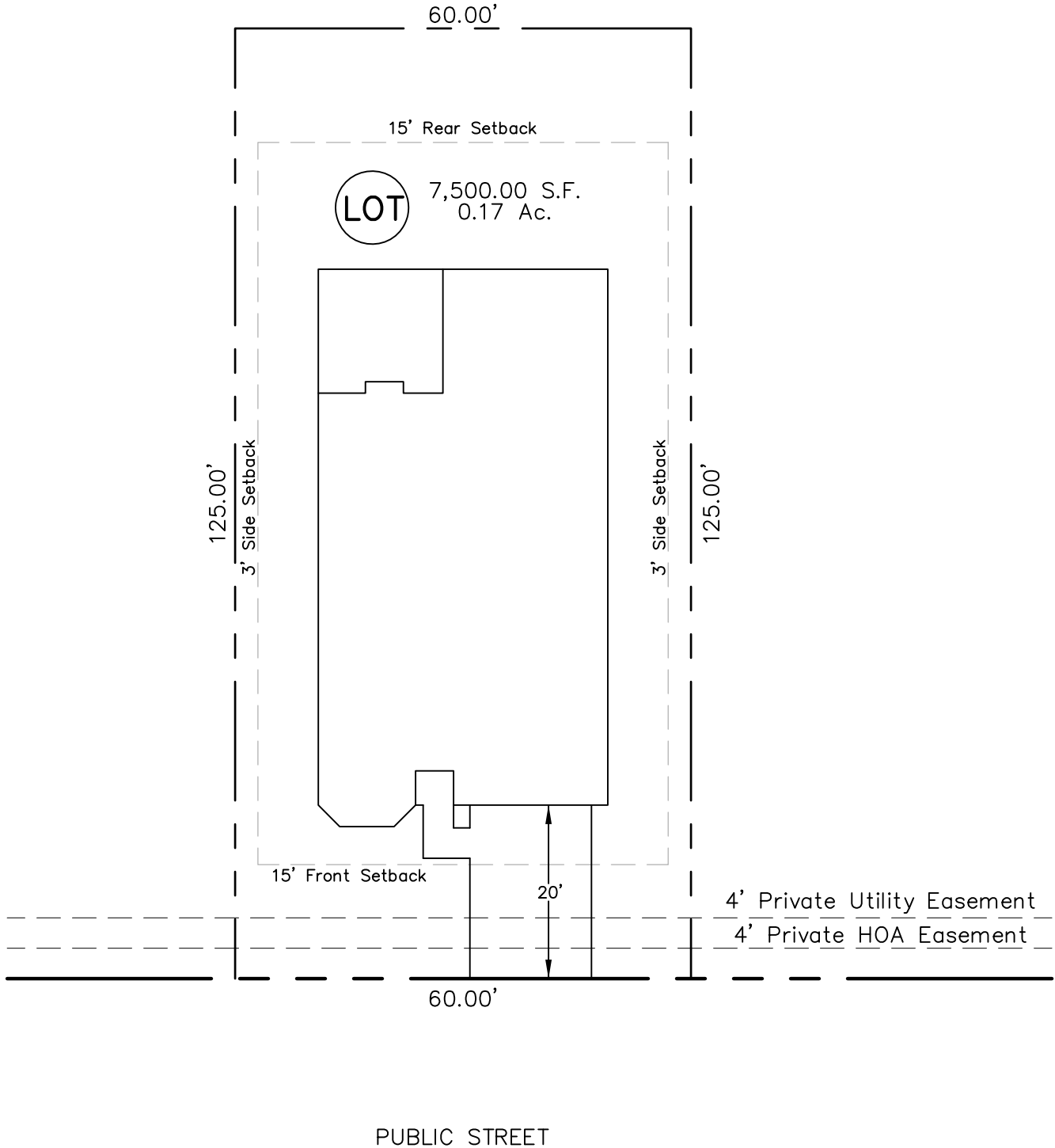
Scale: 1"=400'



Date:
March 19, 2014



IMPERVIOUS SURFACE AREA	
DESCRIPTION	AREA
HOUSE w/ PORCH	+/-2,900 S.F.
PATIO/HVAC/MISC.	+/-300 S.F.
DRIVEWAY & WALKS	+/-425 S.F.
TOTAL (PROPOSED)=	+/-3,625 S.F.
TOTAL (ALLOWED)=	+/-3,800 S.F.

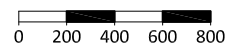


Owner: NNP-Briar Chapel, LLC
Book 1722, Page 1163

US Steel Tract-Parcel No. 2177

Typical Plot Plan

Scale: 1"=400'



Date:
March 19, 2014

