

BALLOON PHOTO PRESENTATION

American Tower Corporation

Wireless Communications Facility Balloon Tether Documentation

Proposed 199.0'agl Telecommunications Facility is to be located at or near Poythress Road, Chapel Hill, NC 27516. The Balloon is 3.50' in diameter and 10.0' in length and holds 90 cubic feet of helium. The balloon as pictured is tethered at One Hundred Ninety-Nine Feet (199 feet in height/altitude) above ground, at the centerline of the proposed tower facility location. The pictures that follow are taken with a 16.0 mega pixel digital camera with the lens set at 5.0mm to represent a "normal view**" that is representative of what a person would see at ground level if viewing the balloon at similar and representative distances.

The photography for this documentation was shot between the hours of 8:00AM and 12:00PM on September 5, 2013. The winds during this time were about 5mph (WNW); "mild". The blimp was stable and vertical over the proposed centerline. Attached are wind graphs that depict actual conditions during the blimp tether.

****Note: Some of the photography of the balloon is "zoomed" to depict the balloon in place where necessary, when the subject balloon is not visible on the 5.0mm lens setting. Zoom range is 5.0mm to 25mm optical.***



**GRAHAM HERRING COMMERCIAL REAL ESTATE GRAPHIC SERVICES
PROVIDING PROFESSIONAL SPECIALTY SERVICES TO THE TELECOMMUNICATIONS INDUSTRY**

The photography for this documentation was shot between the hours of 8:00AM and 12:00PM. The winds during this time were about 5mph (WNW). The balloon was stable and vertical over the proposed centerline. Below are wind charts that depict the wind direction and speed during the balloon tether.

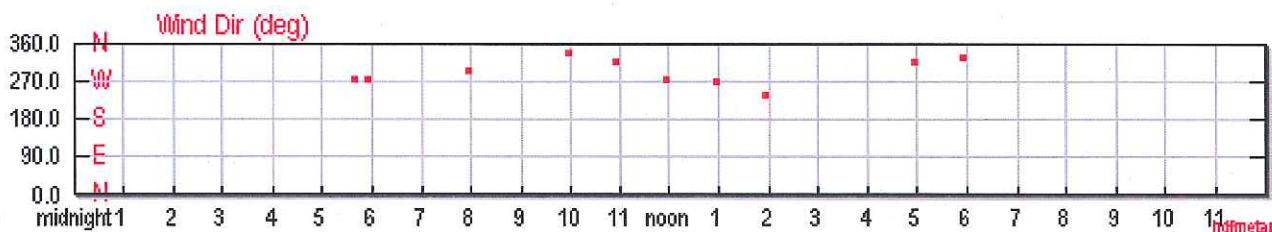
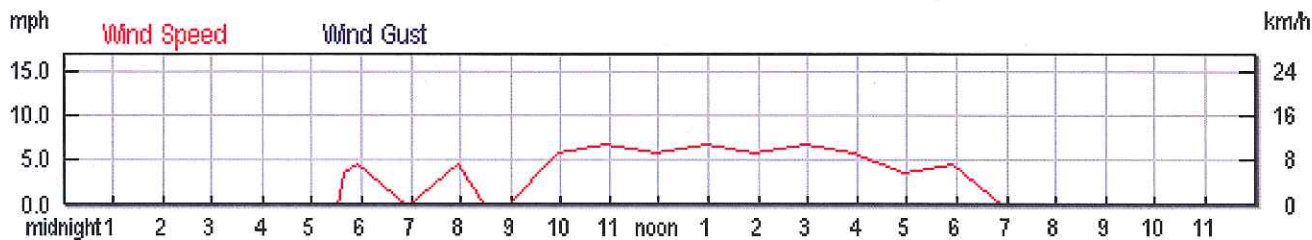
WEATHER HISTORY FOR CHAPEL HILL, NC

Thursday, September 5, 2013

	Actual	Average	Record
Mean Temperature	75 °F	-	
Max Temperature	86 °F	84 °F	97 °F (1954)
Min Temperature	64 °F	61 °F	49 °F (1990)
Dew Point	62 °F		
Average Humidity	74		
Maximum Humidity	93		
Minimum Humidity	33		
Precipitation	0.00 in	-	- ()
Sea Level Pressure	30.08 in		
Wind Speed	1 mph ()		
Max Wind Speed	7 mph		
Max Gust Speed	-		
Visibility	6.1 miles		
Events			

T = Trace of Precipitation, MM = Missing Value

Source: NWS Daily Summary





AMERICANTOWER

**AT&T SITE #368-545
ATC SITE #280373**

MEACHAM NC, CHAPEL HILL, NC

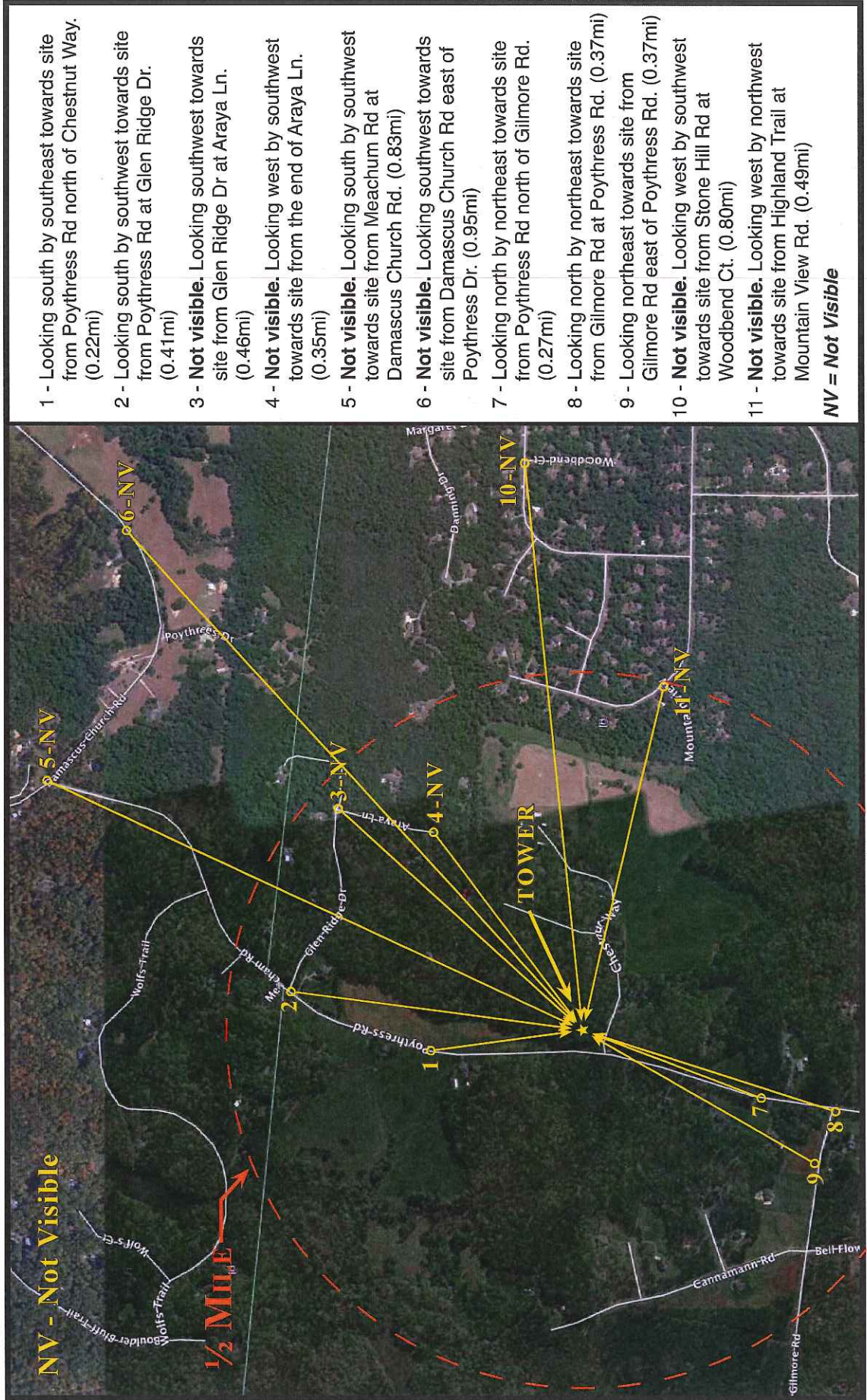




AMERICANTOWER

**AT&T SITE #368-545
ATC SITE #280373**

MEACHAM NC, CHAPEL HILL, NC



- 1 - Looking south by southeast towards site from Poythress Rd north of Chestnut Way. (0.22mi)
- 2 - Looking south by southwest towards site from Poythress Rd at Glen Ridge Dr. (0.41mi)
- 3 - **Not visible.** Looking southwest towards site from Glen Ridge Dr at Araya Ln. (0.46mi)
- 4 - **Not visible.** Looking west by southwest towards site from the end of Araya Ln. (0.35mi)
- 5 - **Not visible.** Looking south by southwest towards site from Meachum Rd at Damascus Church Rd. (0.83mi)
- 6 - **Not visible.** Looking southwest towards site from Damascus Church Rd east of Poythress Dr. (0.95mi)
- 7 - Looking north by northeast towards site from Poythress Rd north of Gilmore Rd. (0.27mi)
- 8 - Looking north by northeast towards site from Gilmore Rd at Poythress Rd. (0.37mi)
- 9 - Looking northeast towards site from Gilmore Rd east of Poythress Rd. (0.37mi)
- 10 - **Not visible.** Looking west by southwest towards site from Stone Hill Rd at Woodbend Ct. (0.80mi)
- 11 - **Not visible.** Looking west by northwest towards site from Highland Trail at Mountain View Rd. (0.49mi)

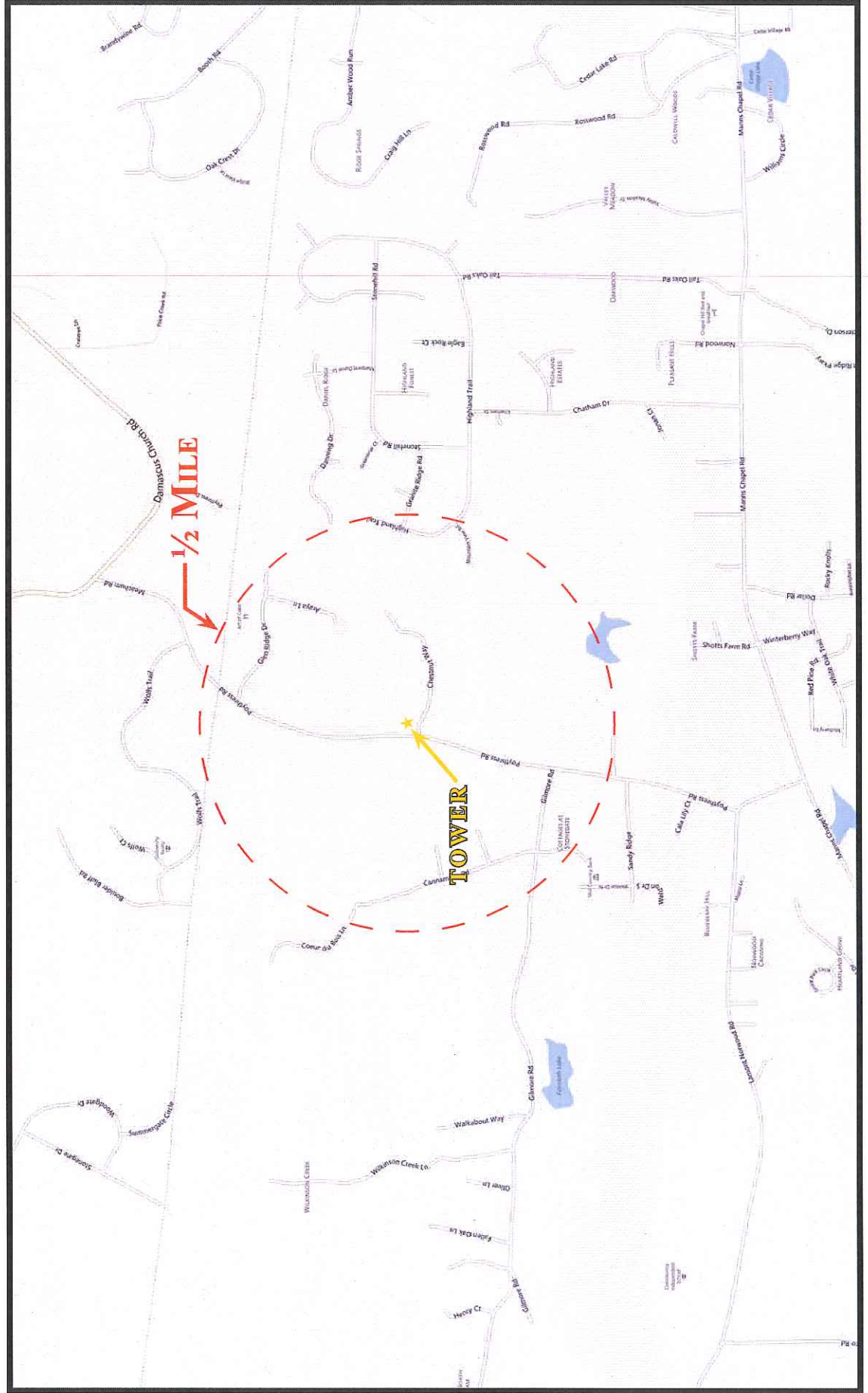
NV = Not Visible



AMERICANTOWER

**AT&T SITE #368-545
ATC SITE #280373**

MEACHAM NC, CHAPEL HILL, NC



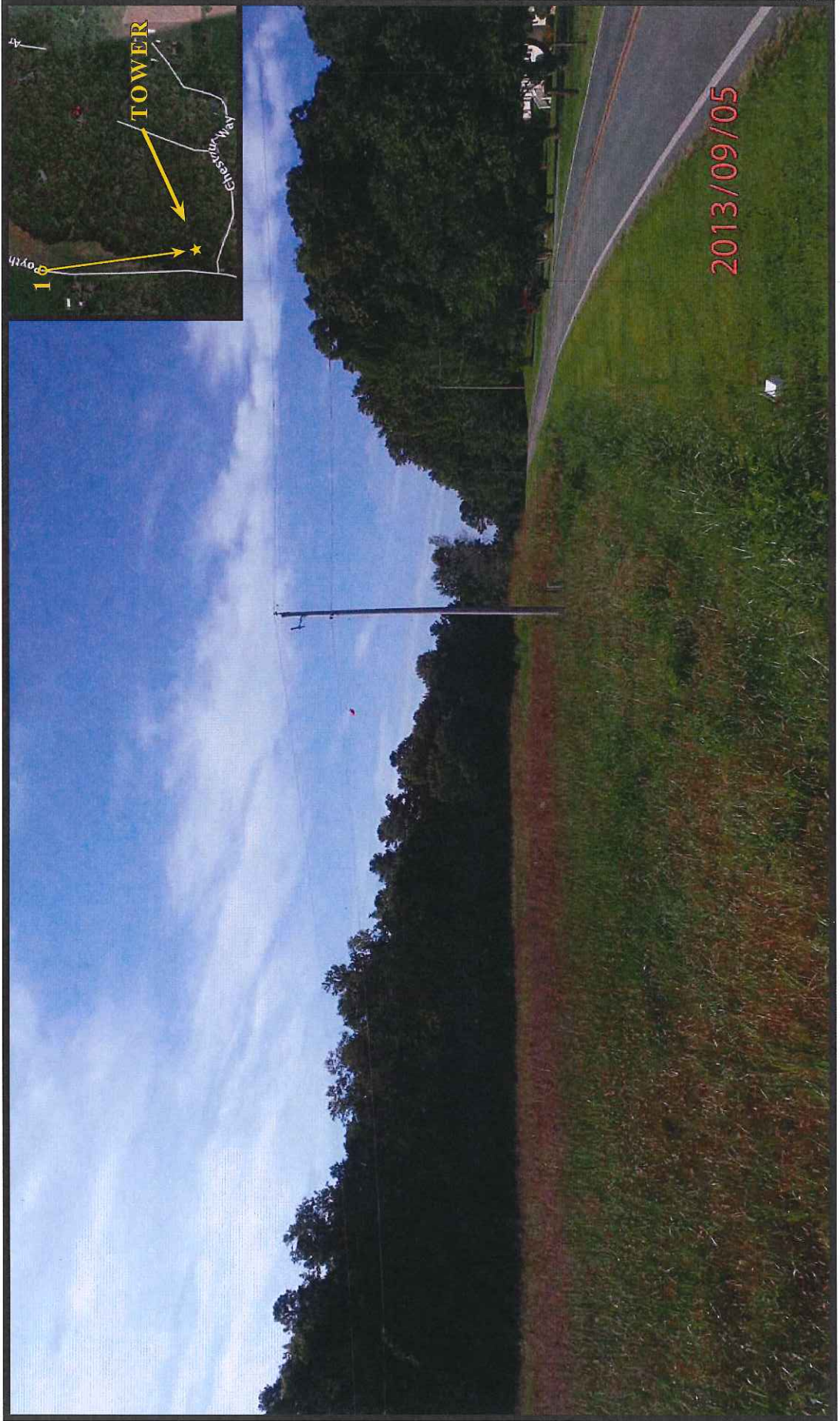


AMERICAN TOWER

AT&T SITE #368-545

ATC SITE #280373

MEACHAM NC, CHAPEL HILL, NC



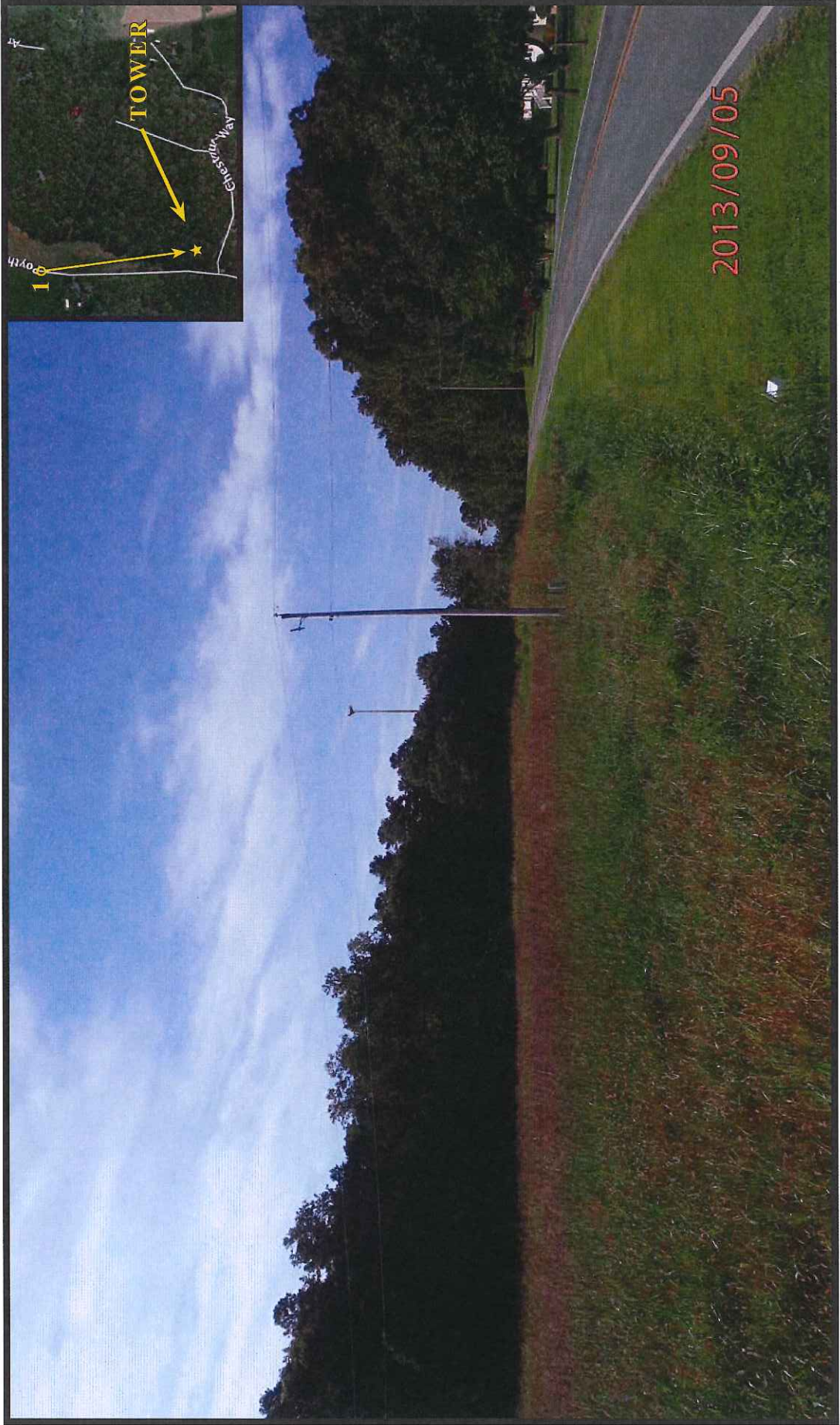
VIEW FROM LOCATION 1



AMERICANTOWER

**AT&T SITE #368-545
ATC SITE #280373**

MEACHAM NC, CHAPEL HILL, NC



SIMULATED VIEW FROM LOCATION 1



AMERICAN TOWER

AT&T SITE #368-545
ATC SITE #280373

MEACHAM NC, CHAPEL HILL, NC



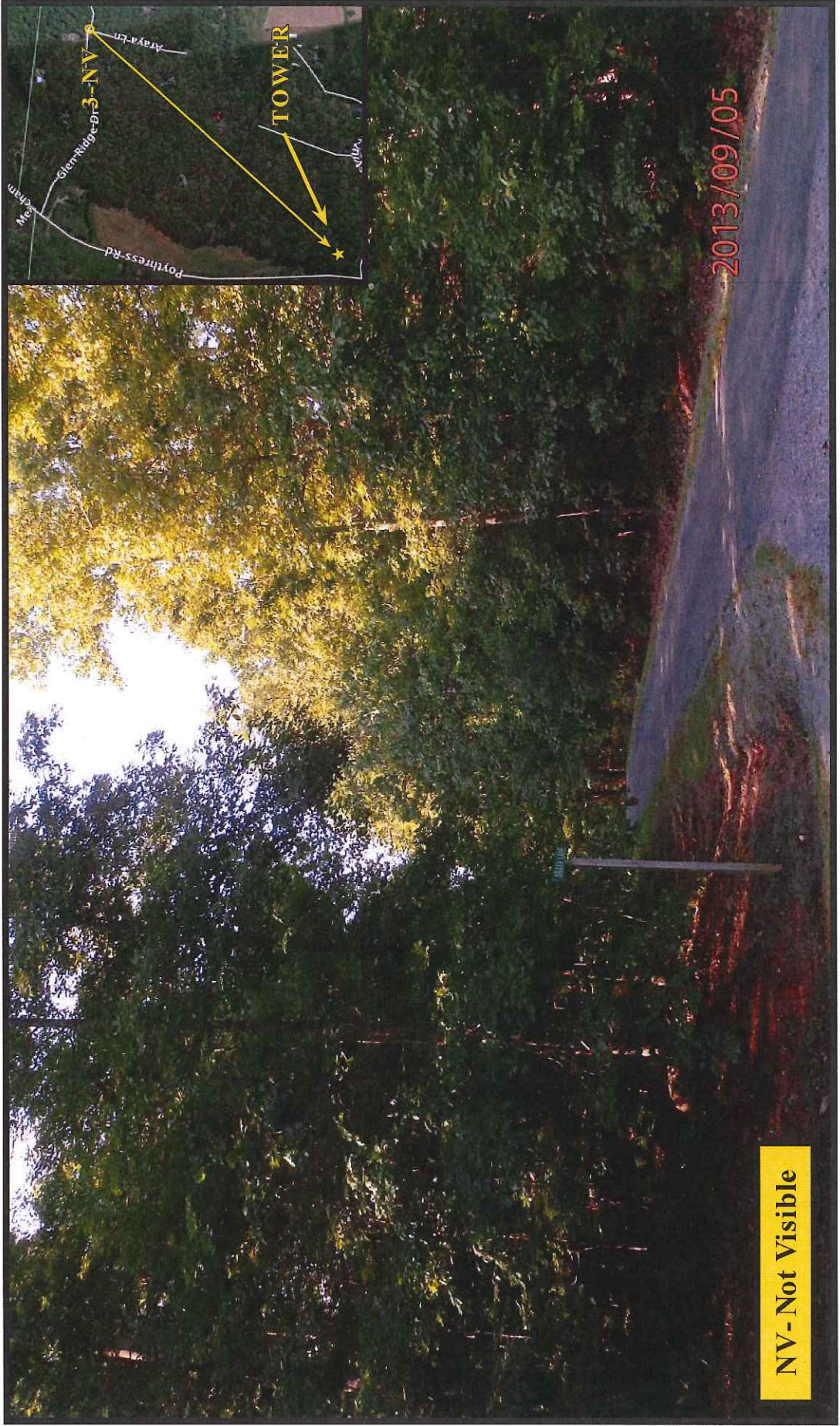
VIEW FROM LOCATION 2



AMERICANTOWER

**AT&T SITE #368-545
ATC SITE #280373**

MEACHAM NC, CHAPEL HILL, NC



NV - Not Visible

2013/09/05

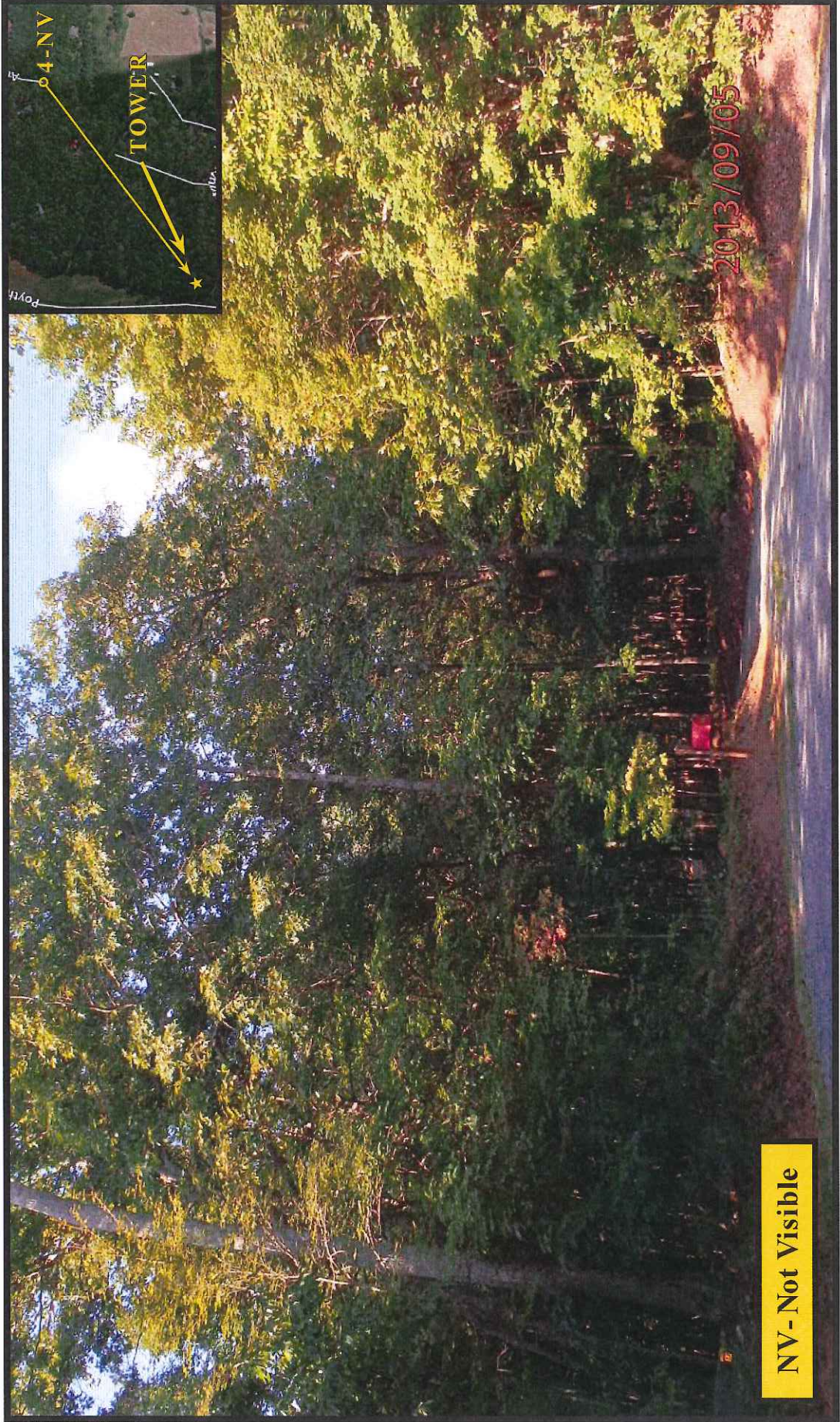
VIEW FROM LOCATION 3



AMERICANTOWER

**AT&T SITE #368-545
ATC SITE #280373**

MEACHAM NC, CHAPEL HILL, NC



NV - Not Visible

VIEW FROM LOCATION 4



AMERICANTOWER

AT&T SITE #368-545
ATC SITE #280373

MEACHAM NC, CHAPEL HILL, NC



NV - Not Visible

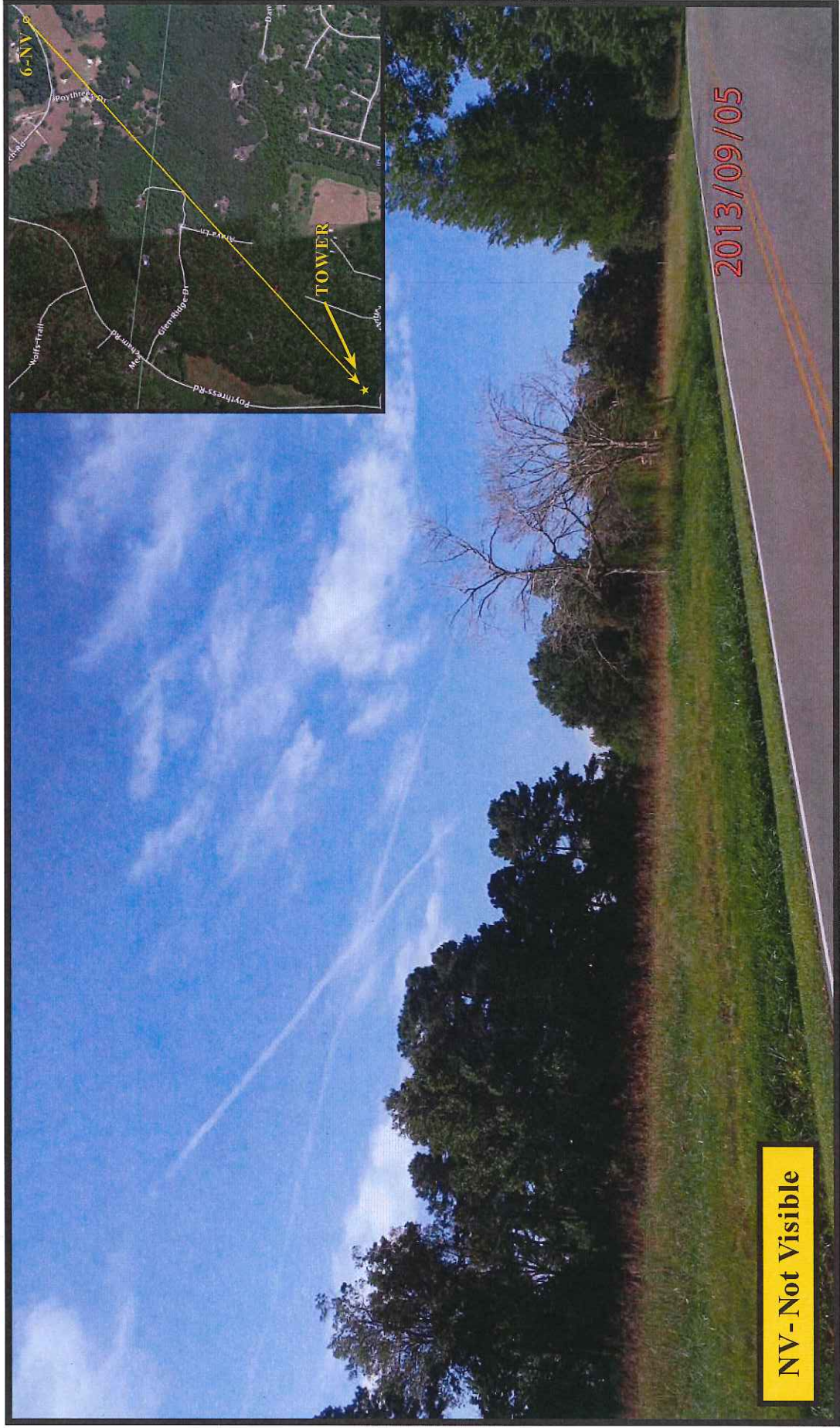
VIEW FROM LOCATION 5



AMERICANTOWER

**AT&T SITE #368-545
ATC SITE #280373**

MEACHAM NC, CHAPEL HILL, NC



NV - Not Visible

2013/09/05

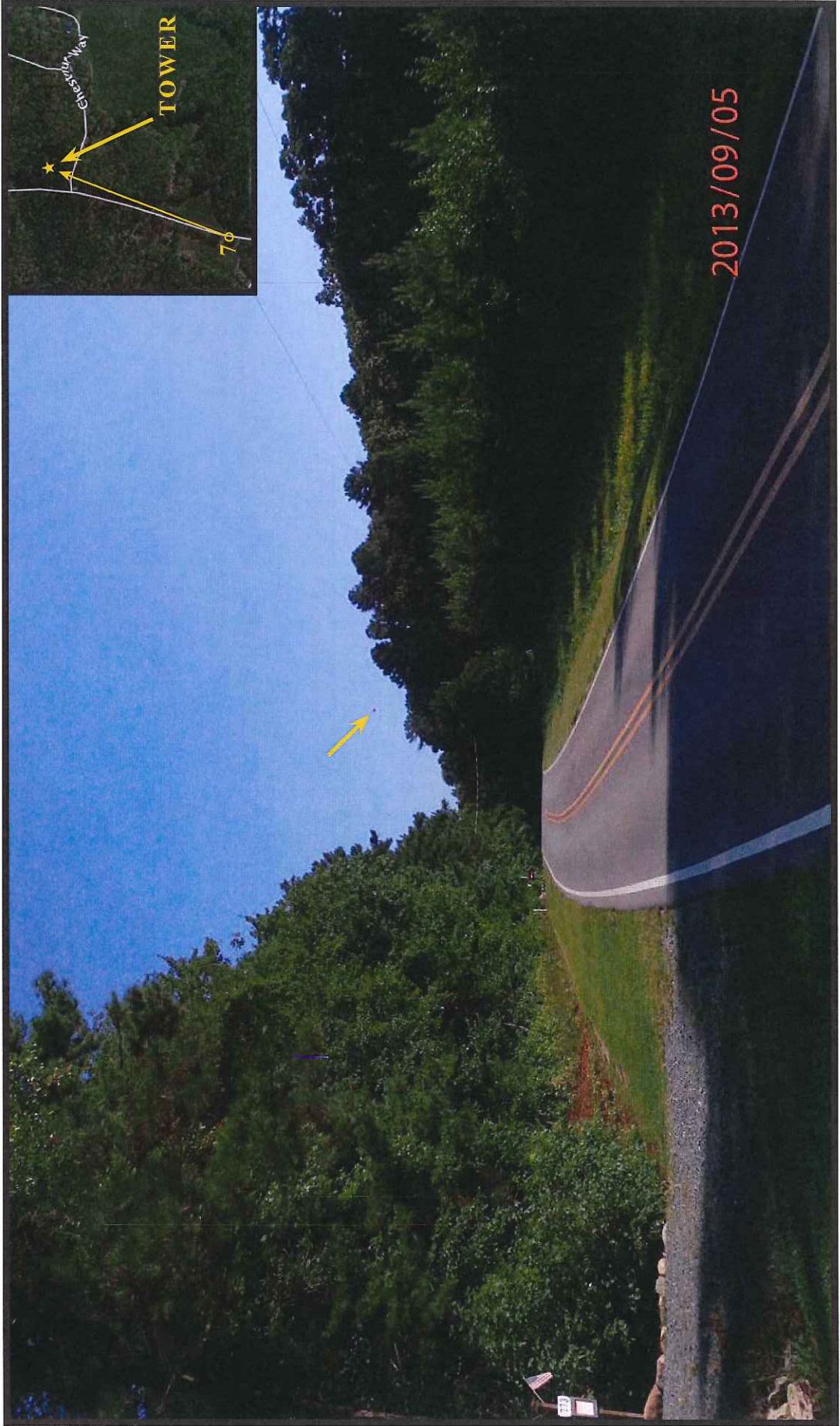
VIEW FROM LOCATION 6



AMERICANTOWER

**AT&T SITE #368-545
ATC SITE #280373**

MEACHAM NC, CHAPEL HILL, NC



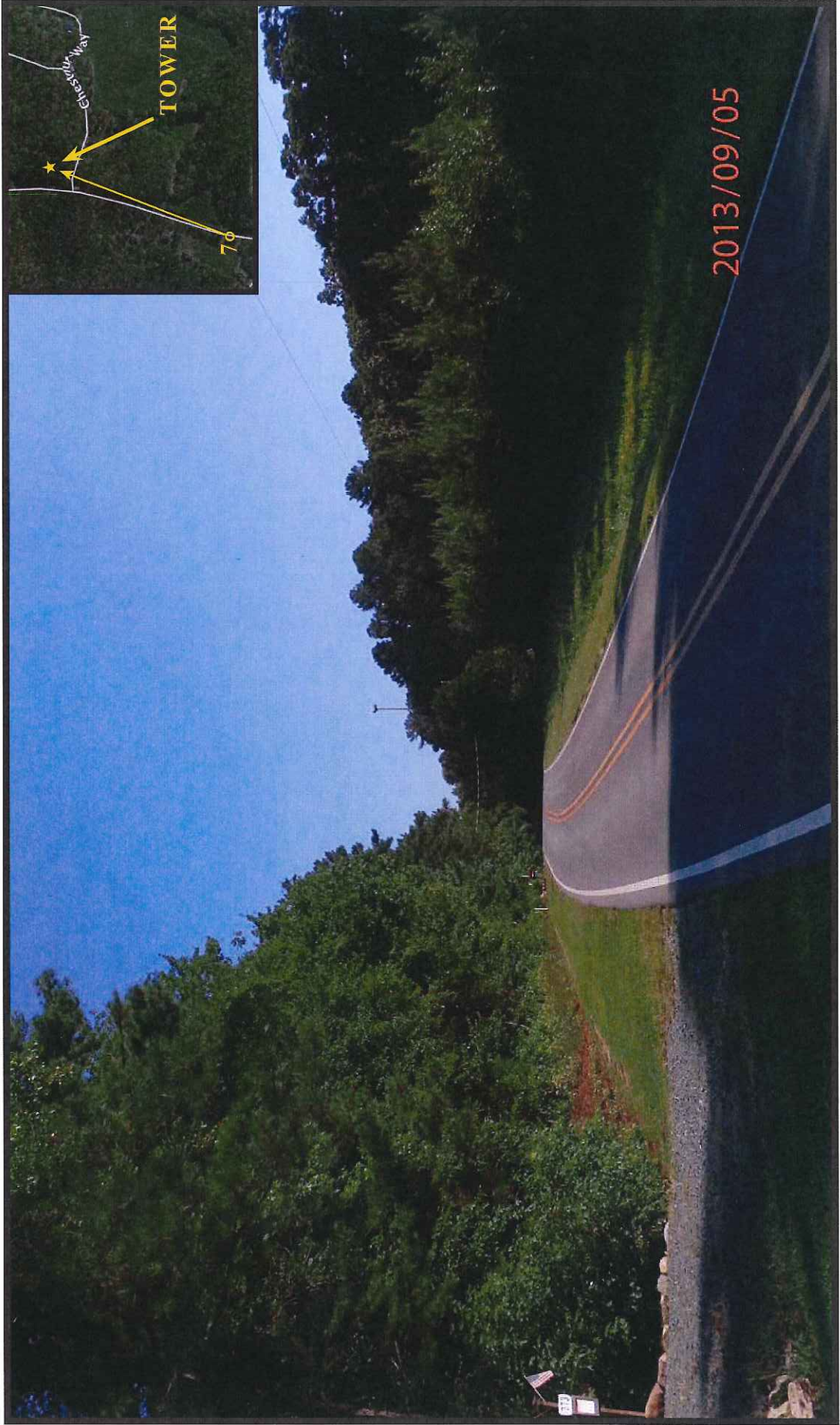
VIEW FROM LOCATION 7



AMERICANTOWER

**AT&T SITE #368-545
ATC SITE #280373**

MEACHAM NC, CHAPEL HILL, NC



SIMULATED VIEW FROM LOCATION 7



AMERICANTOWER

AT&T SITE #368-545

ATC SITE #280373

MEACHAM NC, CHAPEL HILL, NC



VIEW FROM LOCATION 8

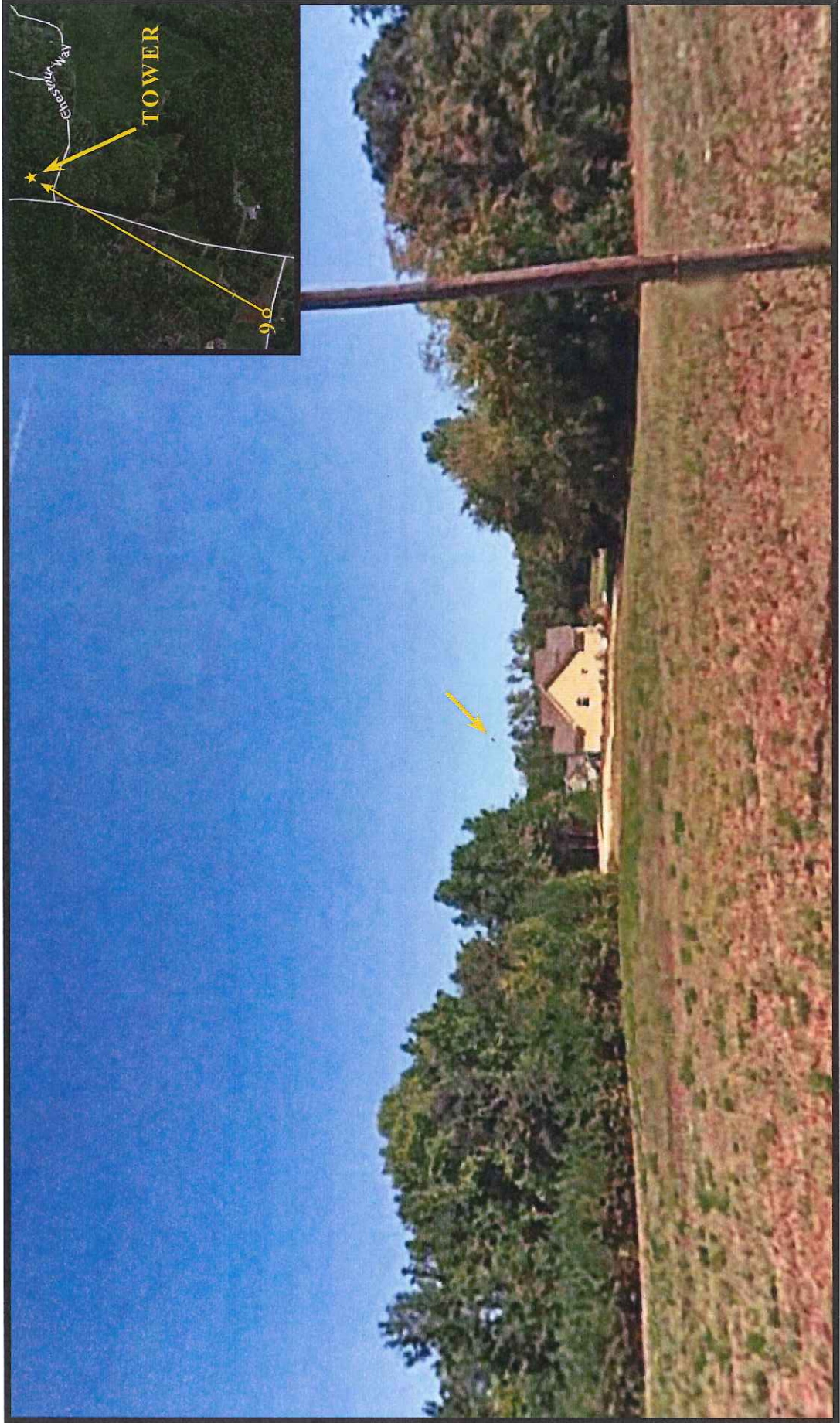


AMERICANTOWER

AT&T SITE #368-545

ATC SITE #280373

MEACHAM NC, CHAPEL HILL, NC



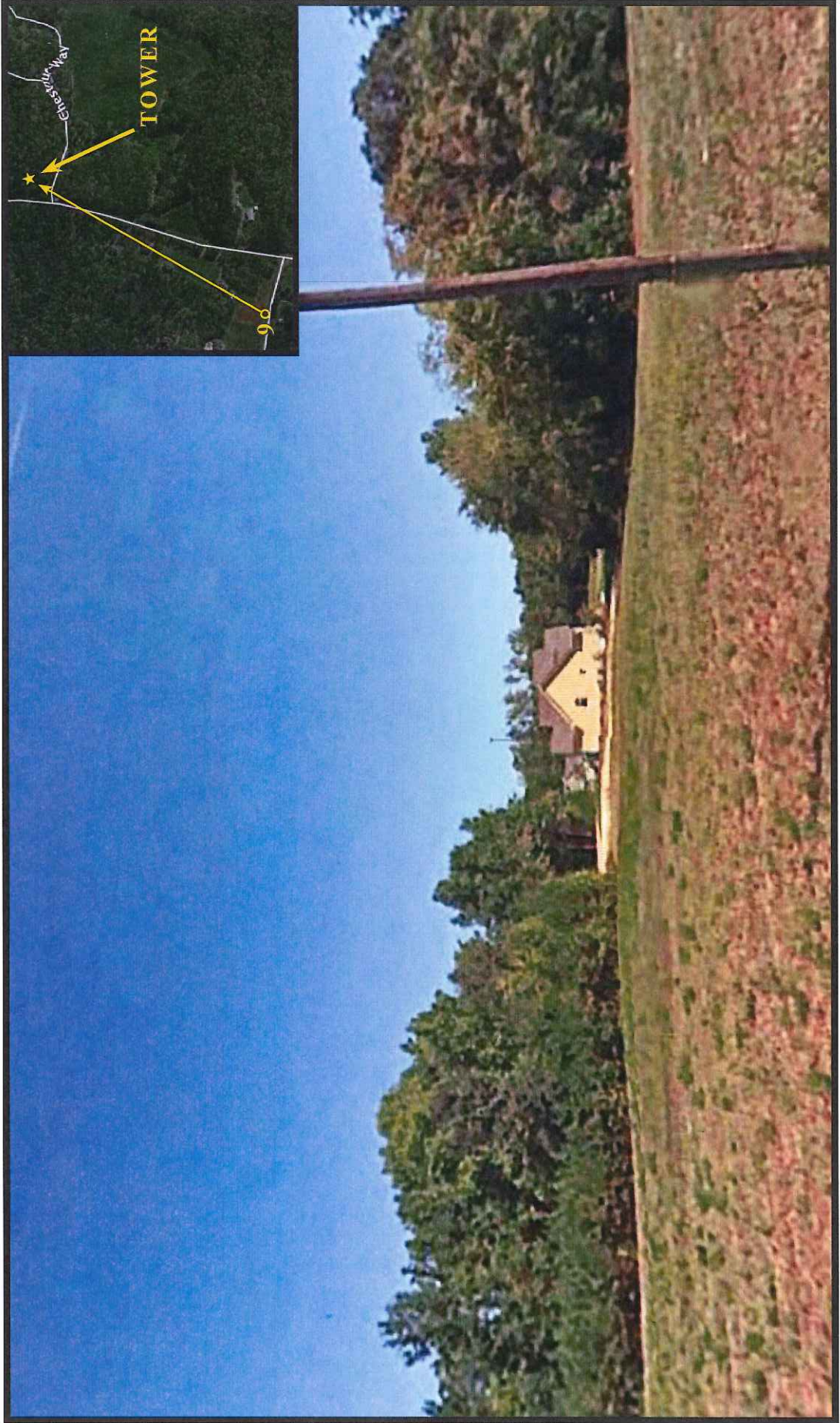
VIEW FROM LOCATION 9



AMERICANTOWER

**AT&T SITE #368-545
ATC SITE #280373**

MEACHAM NC, CHAPEL HILL, NC



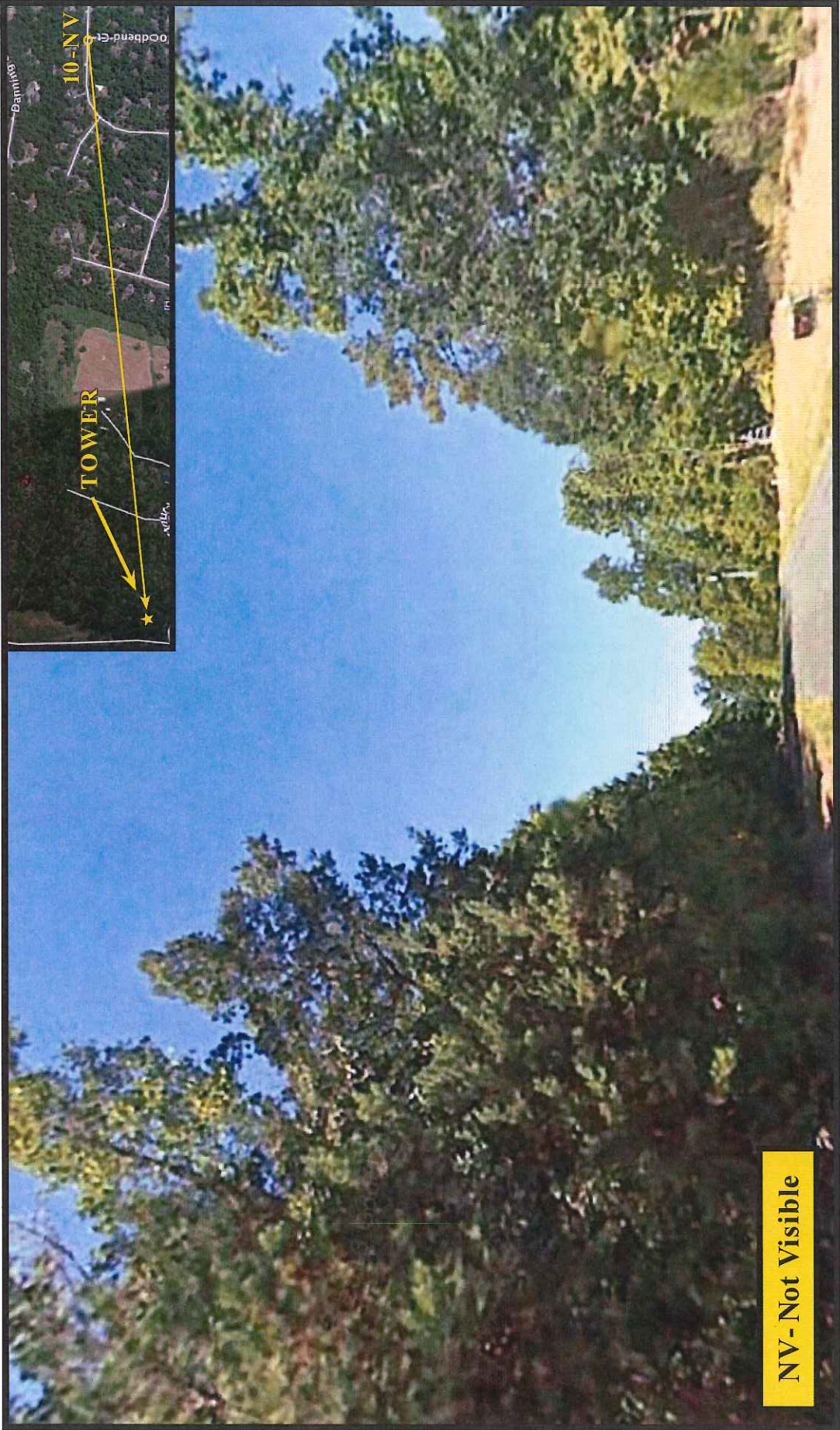
SIMULATED VIEW FROM LOCATION 9



AMERICAN TOWER

**AT&T SITE #368-545
ATC SITE #280373**

MEACHAM NC, CHAPEL HILL, NC



NV - Not Visible

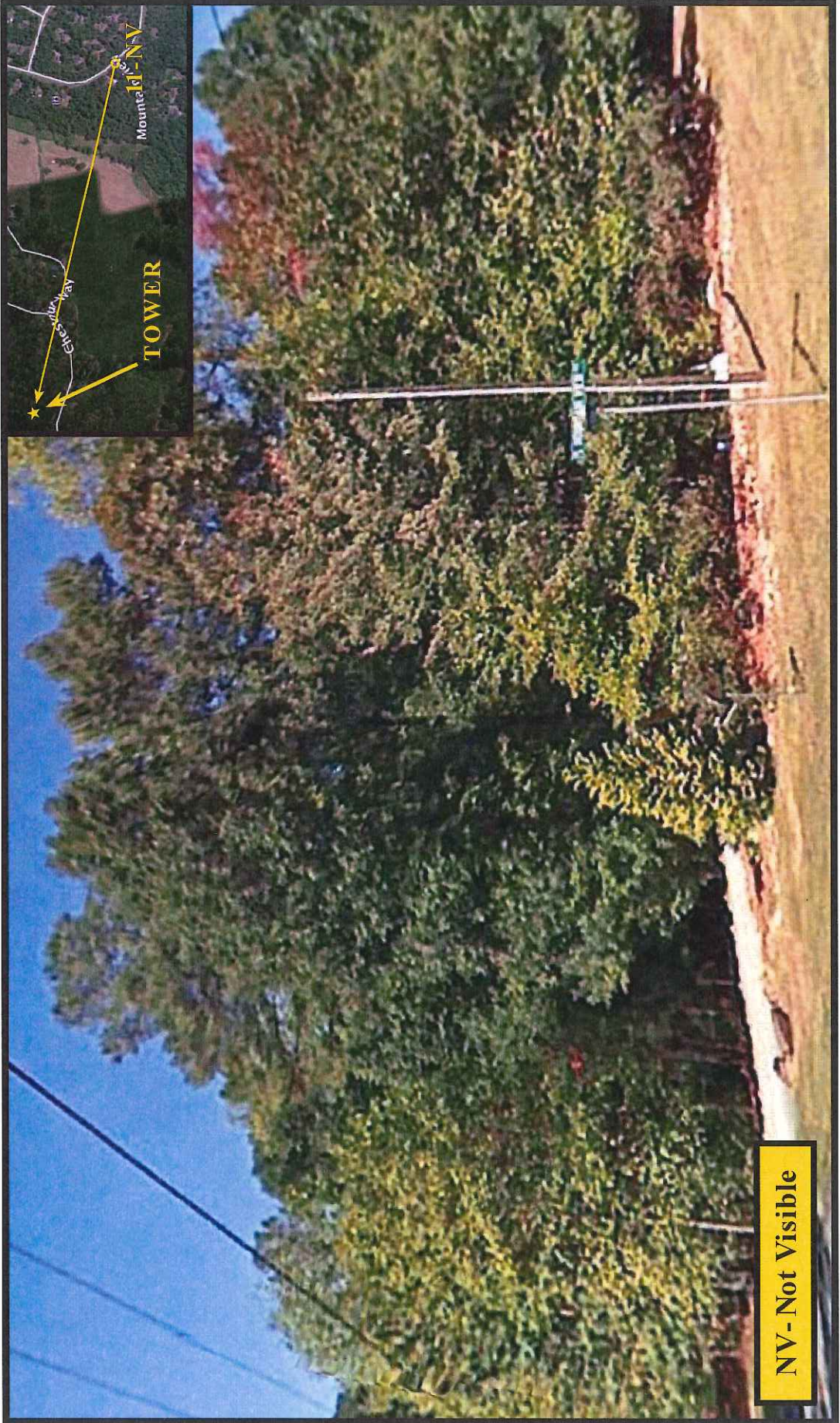
VIEW FROM LOCATION 10



AMERICAN TOWER

**AT&T SITE #368-545
ATC SITE #280373**

MEACHAM NC, CHAPEL HILL, NC



NV - Not Visible

VIEW FROM LOCATION 11