


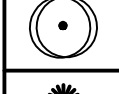
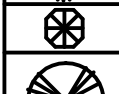
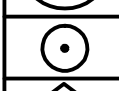
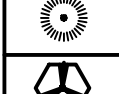

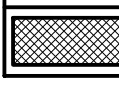




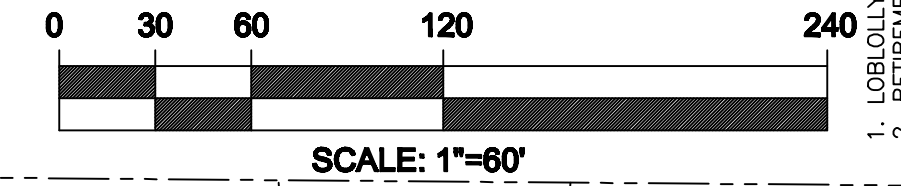
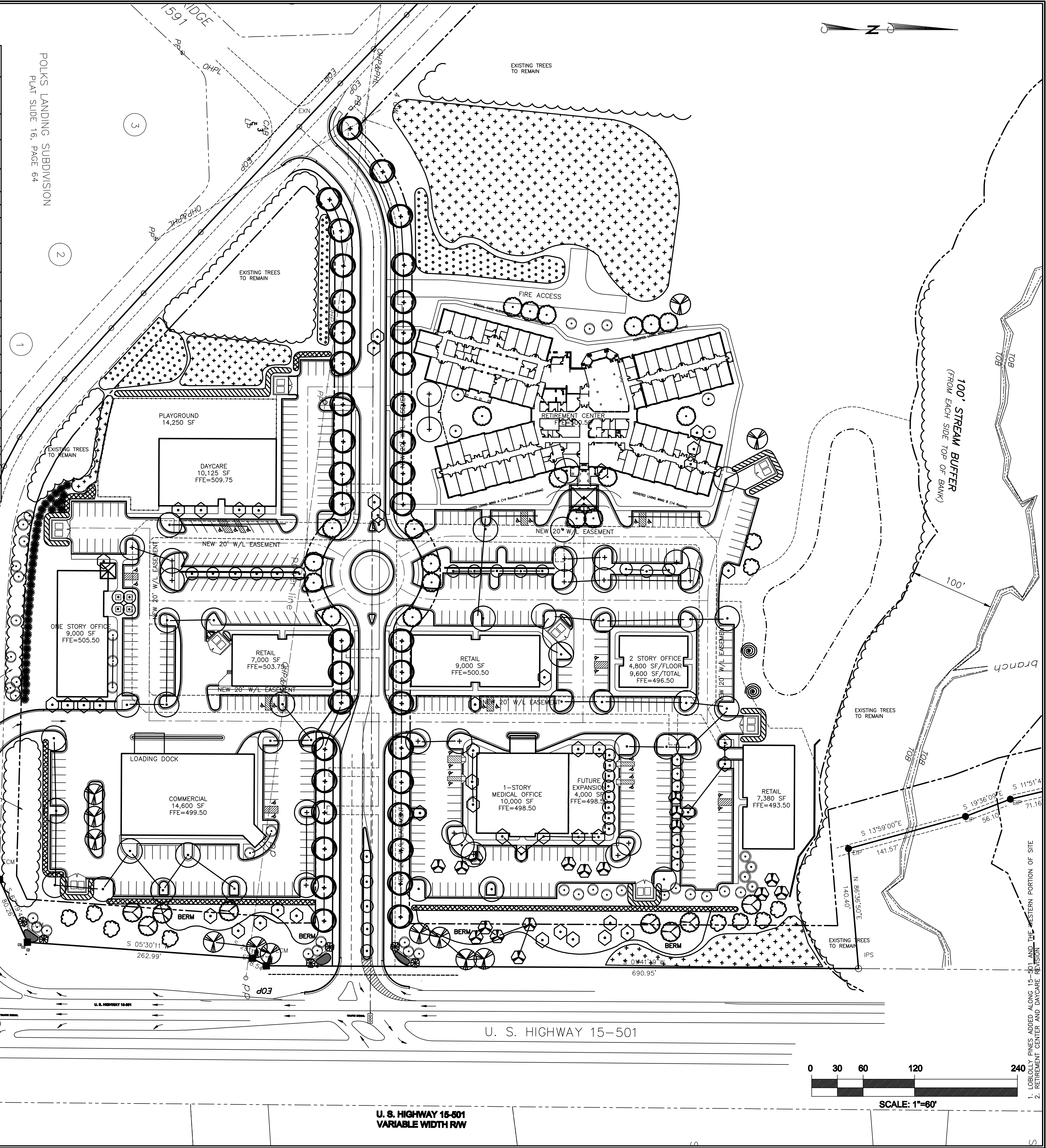
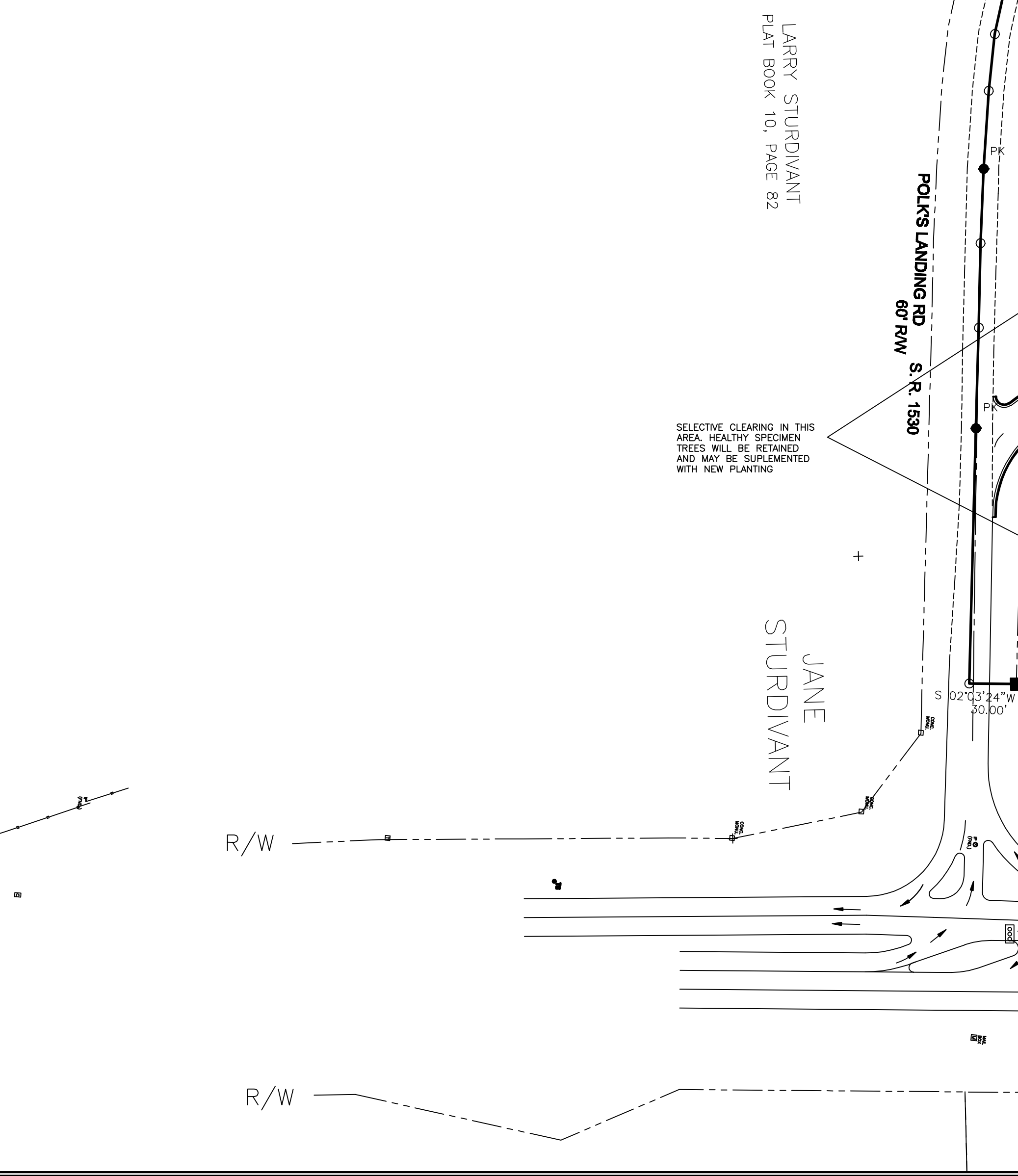


PLANT LEGEND/LIST

BOTANICAL NAME	COMMON NAME	QUANTITY	REMARKS
 Lagerstroemia indica 'Sarah's White'	Sarah's White Crape Myrtle	20	8' MIN HEIGHT AT PLANTING
 Acer rubrum 'October Glory'	October Glory Red Maple	39	10-12' MIN HEIGHT AT PLANTING
 Cercis Canadensis	Tennessee Pink Redbud	10	8' o.c. ALONG TYPE "A" BUFFER 3' MIN HEIGHT AT PLANTING
 Acer rubrum 'Red Sunset'	Red Sunset Red Maple	8	10-12' MIN HEIGHT AT PLANTING
 Ilex x Nellie Stevens	Nellie Stevens Holly	38	6' MIN HEIGHT AT PLANTING
 Thuja Plicata	Green Giant Arborvitae	38	6-8' MIN HEIGHT AT PLANTING
 Acer palmatum	Japanese Maple	6	4-6' MIN HEIGHT AT PLANTING
 Magnolia grandiflora 'Claudia Wannamaker'	Claudia Wannamaker Magnolia	12	6' MIN HEIGHT AT PLANTING
 Pistacia chinensis	Chinese Pistache	19	10' MIN HEIGHT AT PLANTING
 Quercus lyrata	Overcup Oak	37	10-12' MIN HEIGHT AT PLANTING
 Ilex cornuta 'Burfordi' treeform	treeform Burford Holly	28	6' MIN HEIGHT AT PLANTING
 Lagerstroemia indica 'Sioux'	Sioux Crape Myrtle	46	8' MIN HEIGHT AT PLANTING
 Magnolia grandiflora 'Little Gem'	Little Gem Magnolia	10	8' MIN HEIGHT AT PLANTING
 Cryptomeria japonica	Cryptomeria	4	6' MIN HEIGHT AT PLANTING
 Cornus Kousa	Kousa Dogwood	16	6' MIN HEIGHT AT PLANTING
 Salix babyionica	Weeping Willow	2	6-8' MIN HEIGHT AT PLANTING
 Juniperus virginiana	Red Cedar	109+53+49	6-8' MIN HEIGHT AT PLANTING
 Pinus taeda	Loblolly Pine	12 504	4' MIN HEIGHT ALONG POLKS LANDING ROAD 18-24" MIN ALL OTHER AREAS
 Myrica cerifera	WAX MYRTLE	132	36-42" MIN HEIGHT AT PLANTING
 Ilex cornuta 'Needlepoint'	Needlepoint Holly	142	30-36" MIN HEIGHT AT PLANTING
 Annuals	Annuals	375 sf	



PO BOX 2077  
APEX, NC 27502  
TELEPHONE: 919 363-1422  
FACSIMILE: 919 363-1477

PRELIMINARY PLANS  
**POLKS VILLAGE**

OWNER/DEVELOPER: POLKS VILLAGE, INC.  
CHATHAM COUNTY  
NORTH CAROLINA

DRAWN BY	CHECKED BY
TDS	TDS

DATE	5-30-12
REVISIONS	
1	7-9-12
2	3-22-13

SHEET TITLE

OVERALL PLANTING PLAN

SHEET NUMBER

**L-1**  
1 OF 1

1. LOBLOLLY PINES ADDED ALONG 15-501 LAND WESTERN PORTION OF SITE  
2. RETIREMENT CENTER AND DAYCARE REVISION