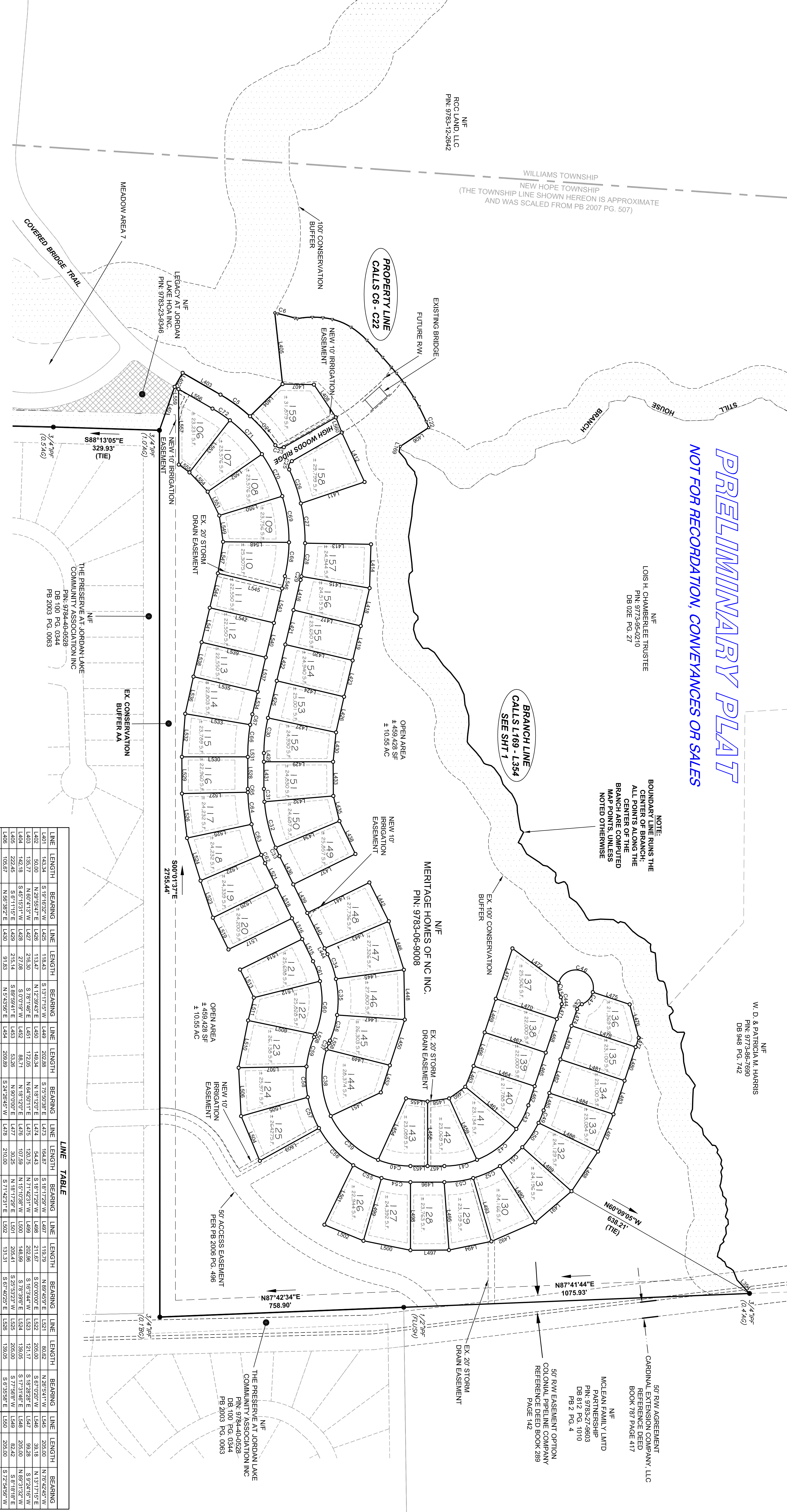


CURVE	LENGTH	RADIUS	CHORD BEARING	CHORD LENGTH	CURVE	LENGTH	RADIUS	CHORD BEARING	CHORD LENGTH	CURVE	LENGTH	RADIUS	CHORD BEARING	CHORD LENGTH	CURVE	LENGTH	RADIUS	CHORD BEARING	CHORD LENGTH
C6	114.06	525.00	S 77°56'E	113.93	C19	54.37	1015.57	S 89°42'E	54.36	C20	31.05	333.30	S 89°42'E	31.05	C21	52.07	1231.56	S 74°48'47"E	52.07
C7	6.68	448.21	S 77°56'E	6.68	C20	31.05	333.30	S 89°42'E	31.05	C22	20.34	173.46	S 74°48'47"E	20.34	C23	28.76	203.00	S 71°10'26"E	28.76
C8	46.84	1071.95	S 75°35'58"E	46.84	C21	52.07	1231.56	S 74°48'47"E	52.07	C24	28.76	203.00	S 71°10'26"E	28.76	C25	28.76	203.00	S 71°10'26"E	28.76
C9	8.20	202.47	N 79°13'48"W	8.20	C22	20.34	173.46	S 74°48'47"E	20.34	C26	118.86	525.00	S 71°10'26"E	118.86	C27	217.99	2030.00	N 17°33'45"E	217.99
C10	32.88	233.16	N 84°24'00"W	46.76	C23	28.76	203.00	S 71°10'26"E	28.76	C28	28.76	203.00	S 71°10'26"E	28.76	C29	118.86	525.00	S 71°10'26"E	118.86
C11	32.88	233.16	N 84°24'00"W	46.76	C24	28.76	203.00	S 71°10'26"E	28.76	C30	118.86	525.00	S 71°10'26"E	118.86	C31	118.86	525.00	S 71°10'26"E	118.86
C12	62.80	180.22	S 87°15'22"E	62.80	C25	28.76	203.00	S 71°10'26"E	28.76	C32	118.86	525.00	S 71°10'26"E	118.86	C33	118.86	525.00	S 71°10'26"E	118.86
C13	64.48	244.95	S 50°42'29"E	64.50	C26	118.86	525.00	S 71°10'26"E	118.86	C34	118.86	525.00	S 71°10'26"E	118.86	C35	118.86	525.00	S 71°10'26"E	118.86
C14	41.25	244.95	S 43°15'14"E	41.25	C27	124.82	525.00	S 67°55'E	124.82	C36	104.03	525.00	S 67°55'E	104.03	C37	104.03	525.00	S 67°55'E	104.03
C15	30.89	132.28	S 42°38'E	30.89	C28	104.03	525.00	S 67°55'E	104.03	C38	11.14	525.00	S 12°40'46"W	11.14	C39	11.14	525.00	S 12°40'46"W	11.14
C16	41.10	1162.49	S 41°15'56"E	41.10	C29	118.86	525.00	S 71°10'26"E	118.86	C40	22.39	525.00	N 2°23'07"W	22.39	C41	50.48	325.00	N 14°24'37"E	50.48
C17	24.72	1742.53	S 40°35'7"E	24.72	C30	118.86	525.00	S 71°10'26"E	118.86	C42	50.48	325.00	N 14°24'37"E	50.48	C43	50.48	325.00	N 14°24'37"E	50.48
C18	38.99	463.30	S 37°48'57"E	38.98	C31	118.86	525.00	S 71°10'26"E	118.86	C44	50.48	325.00	N 14°24'37"E	50.48	C45	50.48	325.00	N 14°24'37"E	50.48

**PRELIMINARY PLAT**  
 NOT FOR RECORDATION, CONVEYANCES OR SALES

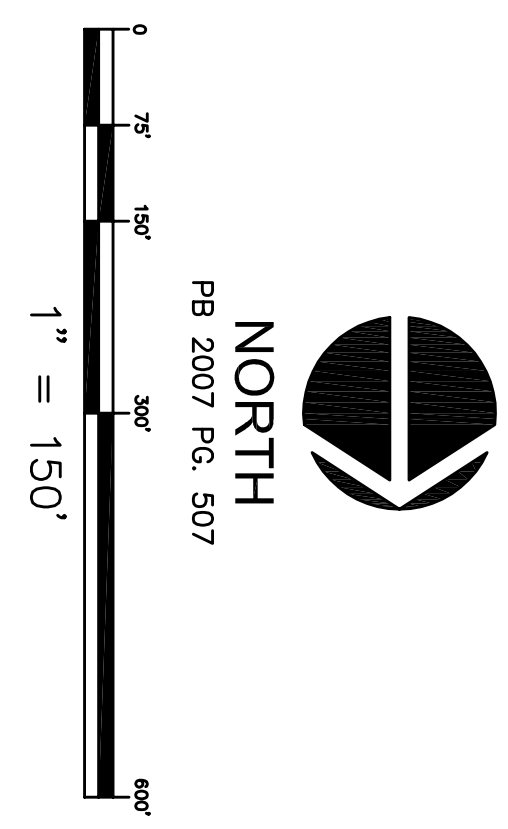


**LINE LEGEND**

---	SURVEYED PROPERTY LINE
---	PROPERTY LINE NOT SURVEYED
---	CONSERVATION BUFFER AREA
---	EASEMENT LINE
---	SETBACK LINE

**SYMBOL & HATCH LEGEND**

△	CP = COMPUTED POINT
●	IPF = IRON PIPE FOUND
○	IPF = IRON PIPE SET
▨	CONSERVATION / STREAM BUFFER



**ABBREVIATIONS**

AC	ACRES
AG	ABOVE GROUND
BE	BELOW GROUND
CP	COMPUTED POINT
IPF	IRON PIPE FOUND
IPF	IRON PIPE SET
PL	PLAT
PL	PLAT BOOK
PS	PLAT
PS	PLAT BOOK
RS	RIGHT-OF-WAY
RS	SOURCE FEET

**LINE TABLE**

LINE	LENGTH	BEARING	LINE	LENGTH	BEARING	LINE	LENGTH	BEARING	LINE	LENGTH	BEARING	LINE	LENGTH	BEARING	LINE	LENGTH	BEARING	LINE	LENGTH	BEARING	
L401	143.4	S 19°15'27"E	L405	118.43	S 13°11'55"W	L413	164.87	S 18°17'29"W	L487	113.79	N 89°45'E	L571	205.80	N 28°54'17"W	L545	205.00	N 17°31'46"W	L600	100.00	N 17°31'46"W	28.40
L402	50.00	N 29°50'47"E	L406	113.47	N 12°34'32"E	L414	113.47	N 12°34'32"E	L417	216.50	S 78°15'28"E	L488	205.22	N 81°18'15"E	L546	205.00	N 17°31'46"W	L601	100.00	N 17°31'46"W	28.40
L403	135.77	N 80°41'37"W	L407	216.50	S 78°15'28"E	L415	172.05	N 64°50'11"E	L419	202.96	S 18°28'28"E	L489	98.28	N 87°24'16"W	L547	98.28	N 87°24'16"W	L602	100.00	N 17°31'46"W	28.40
L404	142.18	S 45°15'31"W	L408	277.08	S 07°09'18"E	L416	172.05	N 64°50'11"E	L420	202.96	S 18°28'28"E	L490	98.28	N 87°24'16"W	L548	98.28	N 87°24'16"W	L603	100.00	N 17°31'46"W	28.40
L405	222.45	N 88°11'55"E	L409	216.54	S 07°09'18"E	L417	30.25	N 81°17'29"E	L421	206.41	S 17°33'22"E	L491	205.00	S 17°33'22"E	L549	82.42	N 87°18'15"E	L604	100.00	N 17°31'46"W	28.40
L406	222.45	N 88°11'55"E	L410	216.54	S 07°09'18"E	L418	30.25	N 81°17'29"E	L422	206.41	S 17°33'22"E	L492	205.00	S 17°33'22"E	L550	82.42	N 87°18'15"E	L605	100.00	N 17°31'46"W	28.40
L407	97.85	N 88°34'36"W	L411	216.50	N 07°24'52"E	L419	110.00	N 00°00'00"E	L423	210.00	S 18°17'29"W	L493	205.00	S 18°17'29"W	L551	82.42	N 87°18'15"E	L606	100.00	N 17°31'46"W	28.40
L408	122.45	N 83°34'36"W	L412	215.00	N 07°24'52"E	L420	110.00	N 00°00'00"E	L424	210.00	S 18°17'29"W	L494	205.00	S 18°17'29"W	L552	82.42	N 87°18'15"E	L607	100.00	N 17°31'46"W	28.40
L409	186.70	N 60°11'39"E	L413	106.19	N 07°24'52"E	L421	215.00	N 07°24'52"E	L425	215.00	S 18°17'29"W	L495	205.00	S 18°17'29"W	L553	82.42	N 87°18'15"E	L608	100.00	N 17°31'46"W	28.40
L410	178.13	S 60°11'39"W	L414	215.00	N 07°24'52"E	L422	215.00	N 07°24'52"E	L426	215.00	S 18°17'29"W	L496	205.00	S 18°17'29"W	L554	82.42	N 87°18'15"E	L609	100.00	N 17°31'46"W	28.40
L411	208.93	N 21°25'25"E	L415	80.36	N 13°42'10"W	L423	215.00	N 07°24'52"E	L427	215.00	S 18°17'29"W	L497	205.00	S 18°17'29"W	L555	82.42	N 87°18'15"E	L610	100.00	N 17°31'46"W	28.40
L412	108.19	N 24°14'17"W	L416	80.36	N 13°42'10"W	L424	210.00	S 17°42'31"E	L428	210.00	S 17°42'31"E	L498	205.00	S 17°42'31"E	L556	82.42	N 87°18'15"E	L611	100.00	N 17°31'46"W	28.40
L413	158.27	N 15°20'12"E	L417	113.57	N 25°55'09"W	L425	62.52	N 81°17'29"E	L429	205.22	N 81°17'29"E	L499	205.00	S 18°17'29"W	L557	82.42	N 87°18'15"E	L612	100.00	N 17°31'46"W	28.40
L414	115.20	S 80°15'27"E	L418	113.57	N 25°55'09"W	L426	62.52	N 81°17'29"E	L430	205.22	N 81°17'29"E	L500	210.00	S 18°17'29"W	L558	71.57	N 13°17'15"E	L613	100.00	N 17°31'46"W	28.40
L415	96.32	S 13°17'15"W	L419	88.72	S 26°34'14"E	L427	66.56	S 21°46'11"W	L431	210.00	S 18°17'29"W	L501	210.00	S 18°17'29"W	L559	82.42	N 13°17'15"E	L614	100.00	N 17°31'46"W	28.40
L416	96.32	S 13°17'15"W	L420	122.48	S 26°34'14"E	L428	148.45	N 22°30'11"E	L432	210.00	S 18°17'29"W	L502	210.00	S 18°17'29"W	L560	82.42	N 13°17'15"E	L615	100.00	N 17°31'46"W	28.40
L417	218.00	S 78°42'45"E	L421	215.00	N 07°24'52"E	L429	100.00	N 18°17'29"E	L433	210.00	S 18°17'29"W	L503	210.00	S 18°17'29"W	L561	82.42	N 13°17'15"E	L616	100.00	N 17°31'46"W	28.40
L418	126.74	S 78°42'45"E	L422	134.86	N 25°33'36"W	L430	110.00	N 18°17'29"E	L434	208.14	S 48°12'31"E	L504	215.00	S 18°17'29"W	L562	82.42	N 13°17'15"E	L617	100.00	N 17°31'46"W	28.40
L419	110.00	S 13°17'15"E	L423	216.53	S 07°09'18"E	L431	200.00	N 17°42'31"W	L435	148.58	N 49°27'23"E	L505	215.00	S 18°17'29"W	L563	82.42	N 13°17'15"E	L618	100.00	N 17°31'46"W	28.40
L420	110.00	S 13°17'15"E	L424	216.53	S 07°09'18"E	L432	200.00	N 17°42'31"W	L436	148.58	N 49°27'23"E	L506	215.00	S 18°17'29"W	L564	82.42	N 13°17'15"E	L619	100.00	N 17°31'46"W	28.40
L421	110.00	S 13°17'15"E	L425	216.53	S 07°09'18"E	L433	200.00	N 17°42'31"W	L437	148.58	N 49°27'23"E	L507	215.00	S 18°17'29"W	L565	82.42	N 13°17'15"E	L620	100.00	N 17°31'46"W	28.40
L422	118.00	S 13°17'15"E	L426	152.79	N 17°15'15"W	L434	152.79	N 17°15'15"W	L438	134.62	N 78°56'41"E	L508	215.00	S 18°17'29"W	L566	82.42	N 13°17'15"E	L621	100.00	N 17°31'46"W	28.40
L423	118.00	S 13°17'15"E	L427	210.36	N 08°24'16"W	L435	152.79	N 17°15'15"W	L439	134.62	N 78°56'41"E	L509	215.00	S 18°17'29"W	L567	82.42	N 13°17'15"E	L622	100.00	N 17°31'46"W	28.40
L424	215.00	S 78°42'45"E	L428	155.00	N 07°59'53"W	L436	155.00	N 07°59'53"W	L442	105.00	S 18°17'29"W	L510	220.00	S 18°17'29"W	L568	82.42	N 13°17'15"E	L623	100.00	N 17°31'46"W	28.40

FINAL SUBDIVISION PLAT FOR  
**THE LEGACY AT JORDAN LAKE PHASE TWO**  
 PROPERTY OF MERITAGE HOMES OF NC INC.  
 NEW HOPE & WILLIAMS TOWNSHIPS - CHATHAM COUNTY, NORTH CAROLINA

301 GLENWOOD AVE, 220  
 PALEIGH, NC 27660  
 PHONE: 919-367-8790  
 FAX: 919-322-0032  
 www.cegroupinc.com  
 License # C-1739

NO.	REVISIONS	DATE

Survey Date: SEPTEMBER 6, 2013  
 Scale: 1" = 150'  
 Drawn: ACS  
 Checked: WMD  
 Project No: 325-02B  
 Computer Draw Name: 325-02B.dwg  
 Sheet No: 2 Of 2