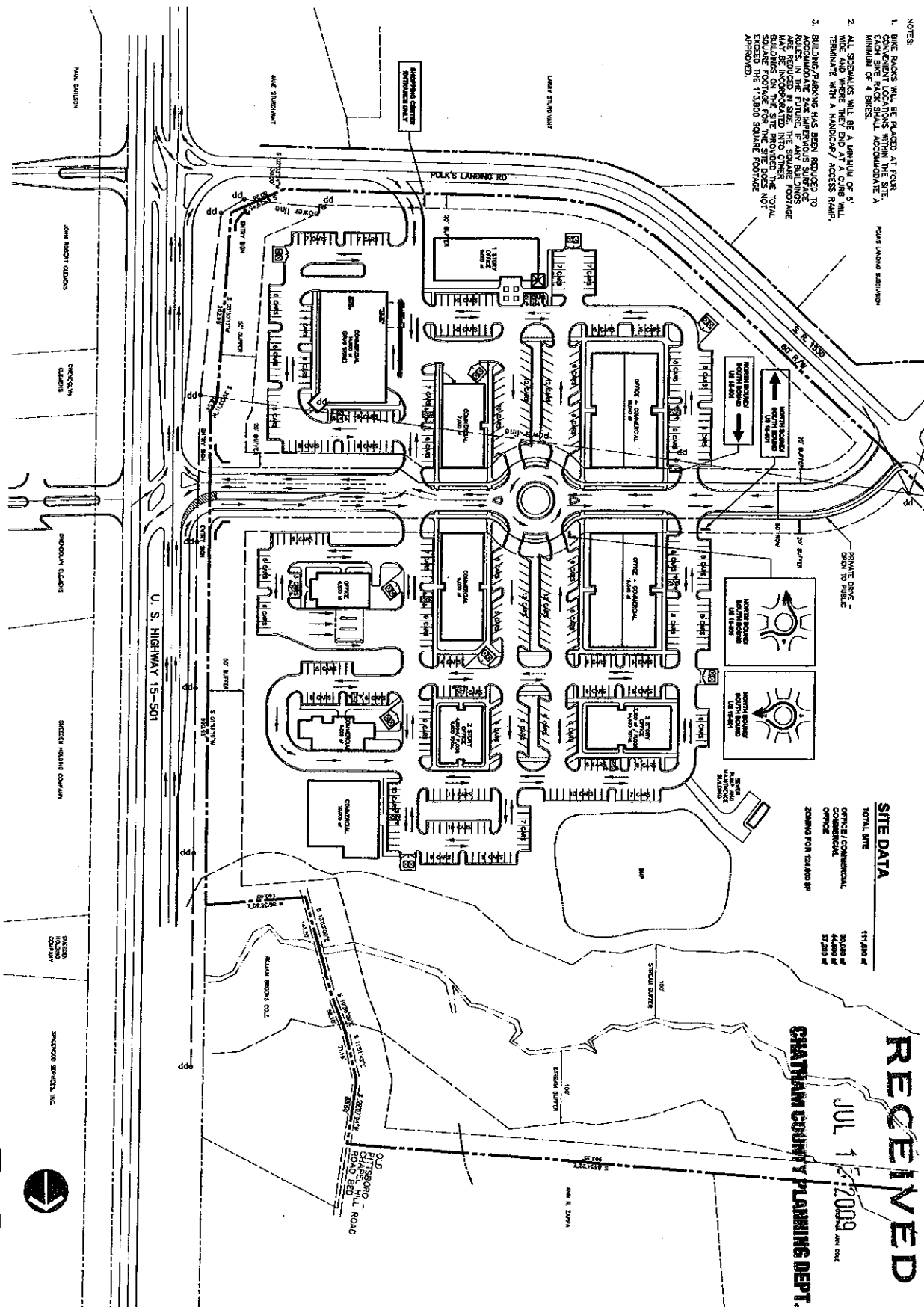


- NOTES:
1. DRIVE RACES SHALL BE PLACED AT FOUR CONVENIENT LOCATIONS WITHIN THE SITE. EACH DRIVE RACE SHALL ACCOMMODATE A MINIMUM OF 4 BIKES.
 2. ALL SIDEWALKS WILL BE A MINIMUM OF 5' WIDE AND WHERE THEY DO AT A CURB WILL TERMINATE WITH A HANDICAP/ ACCESS RAMP.
 3. BUILDING/PARKING HAS BEEN REDUCED TO ACCOMMODATE THE IMPROVED SURFACE AREAS REDUCED IN SIZE. THE SQUARE FOOTAGE MAY BE INCORPORATED INTO OTHER SQUARE FOOTAGE FOR THE ENTIRE SITE. THE TOTAL SQUARE FOOTAGE FOR THE ENTIRE SITE DOES NOT EXCEED THE 113,800 SQUARE FOOTAGE APPROVED.



SITE DATA

TOTAL SITE	113,800 sq ft
OFFICE / COMMERCIAL	20,000 sq ft
PARKING	44,000 sq ft
OFFICE	27,200 sq ft
ZONING FOR 12,000 sq ft	

RECEIVED
 JUL 12 2009
 CHATHAM COUNTY PLANNING DEPT.

CHATHAM COUNTY PLANNING DEPT.



JERRY TURNER & ASSOCIATES, INC.
 Landscape Architecture
 Land Planning
 Environmental Design

906 Jones Franklin Road #200
 Cary, NC 27513
 (919) 941-7522 Fax: (919) 941-7547
 (919) 941-7522 Fax: (919) 941-7547
 (919) 941-7522 Fax: (919) 941-7547

Polks Village

Chatham Co., North Carolina

LAND PROPERTIES LLC
 P.O. BOX 530
 CARY, NC 27513

11/20/08
 4/14/09
 4/23/09
 8/28/09
 8/11/09
 8/18/09

MIXED USE SKETCH PLAN

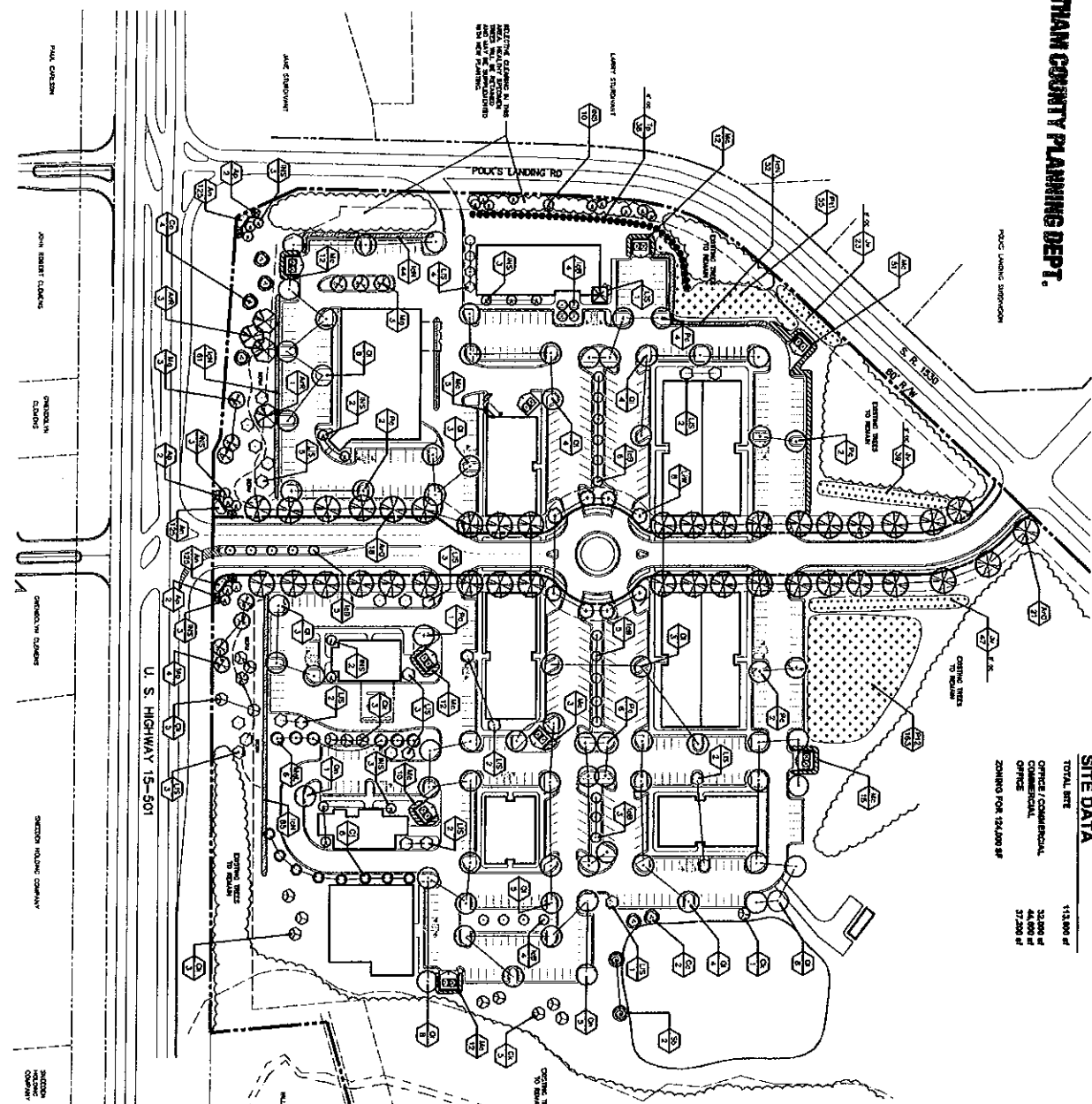
SK-1

RECEIVED

JUL 15 2009

CHATHAM COUNTY PLANNING DEPT.

JERRY TURNER & ASSOCIATES, INC. THIS DOCUMENT IS THE PROPERTY OF JERRY TURNER & ASSOCIATES. ALL RIGHTS ARE RESERVED AND ANY POSSESSION, REPRODUCTION, OR OTHER USE OF THIS DOCUMENT WITHOUT THE PRIOR PERMISSION OF JERRY TURNER & ASSOCIATES IS STRICTLY PROHIBITED.

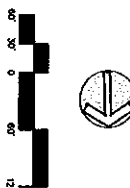


SITE DATA

TOTAL ACRE	114.800 ac
OFFICE / COMMERCIAL	32.000 ac
COMMERCIAL	44.000 ac
OFFICE	37.200 ac
ZONING FOR 154,000 sq ft	

PLANT LIST

NO.	SCIENTIFIC NAME	COMMON NAME	QUANTITY	REMARKS
1
2
3
4
5
6
7
8
9
10
11
12
13
14
15
16
17
18
19
20
21
22
23
24
25
26
27
28
29
30
31
32
33
34
35
36
37
38
39
40
41
42
43
44
45
46
47
48
49
50
51
52
53
54
55
56
57
58
59
60
61
62
63
64
65
66
67
68
69
70
71
72
73
74
75
76
77
78
79
80
81
82
83
84
85
86
87
88
89
90
91
92
93
94
95
96
97
98
99
100



NOTE: SITE PLAN SHALL BE SUBMITTED TO CHATHAM COUNTY PLANNING DEPARTMENT.

JERRY TURNER & ASSOCIATES, INC.
 Landscape Architecture
 Land Planning
 Environmental Design

365 Lower Pavilion Road
 Raleigh, North Carolina 27608
 (919) 881-2700 fax (919) 881-7547

277 S.E. 40 Avenue
 Miami Beach, Florida 33405
 (305) 276-0444 fax (305) 276-7463

HPB PROPERTIES LLC
 P.O. BOX 5345
 CARY NC 27513

Chatham Co., North Carolina

Polks Village

LANDSCAPE PLAN

DATE: 07/15/09
 DRAWN BY: JTB
 CHECKED BY: JTB

441318
 442116
 443114
 444112
 445110

SCALE: 1" = 40'

DATE: 07/15/09