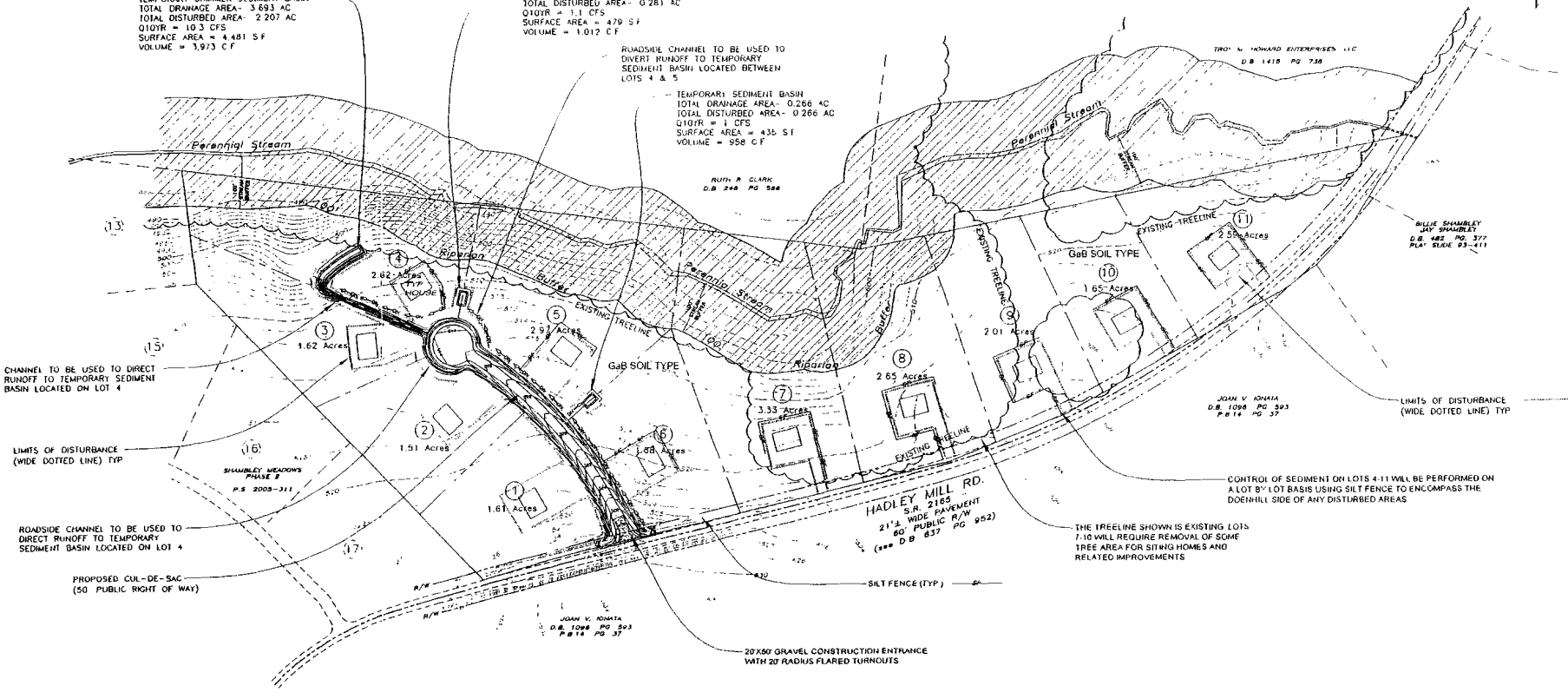


TEMPORARY SKIMMER SEDIMENT BASIN
 TOTAL DRAINAGE AREA- 3.693 AC
 TOTAL DISTURBED AREA- 2.207 AC
 Q10YR = 10.3 CFS
 SURFACE AREA = 4,481 SF
 VOLUME = 3,973 CF

TEMPORARY SEDIMENT BASIN
 TOTAL DRAINAGE AREA- 0.281 AC
 TOTAL DISTURBED AREA- 0.281 AC
 Q10YR = 1.1 CFS
 SURFACE AREA = 479 SF
 VOLUME = 1,012 CF

ROADSIDE CHANNEL TO BE USED TO
 DIVERT RUNOFF TO TEMPORARY
 SEDIMENT BASIN LOCATED BETWEEN
 LOTS 4 & 5

TEMPORARY SEDIMENT BASIN
 TOTAL DRAINAGE AREA- 0.266 AC
 TOTAL DISTURBED AREA- 0.266 AC
 Q10YR = 1 CFS
 SURFACE AREA = 435 SF
 VOLUME = 958 CF



CHANNEL TO BE USED TO DIRECT
 RUNOFF TO TEMPORARY SEDIMENT
 BASIN LOCATED ON LOT 4

LIMITS OF DISTURBANCE
 (WIDE DOTTED LINE) TYP

ROADSIDE CHANNEL TO BE USED TO
 DIRECT RUNOFF TO TEMPORARY
 SEDIMENT BASIN LOCATED ON LOT 4

PROPOSED CUL-DE-SAC
 (50' PUBLIC RIGHT OF WAY)

RUTH A. CLARK
 D.B. 248 PG. 588

TROY A. HINARD ENTERPRISES, LLC
 D.B. 1418 PG. 738

BILLIE SHAMBLEY
 207 SHAMBLEY
 D.B. 482 PG. 377
 PLAT SLASH 93-411

JOAN V. KOMATA
 D.B. 1098 PG. 593
 P. 14 PG. 37

HADLEY MILL RD.
 21' WIDE PAVEMENT
 80' PUBLIC R/W
 (SEE D.B. 837 PG. 952)

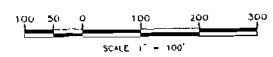
CONTROL OF SEDIMENT ON LOTS 4-11
 WILL BE PERFORMED ON
 A LOT B'Y LOT BASIS USING SILT FENCE TO ENCOMPASS THE
 DOWNHILL SIDE OF ANY DISTURBED AREAS

THE TREE LINE SHOWN IS EXISTING LOTS
 7-10 WILL REQUIRE REMOVAL OF SOME
 TREE AREA FOR SITING HOMES AND
 RELATED IMPROVEMENTS

20'x50' GRAVEL CONSTRUCTION ENTRANCE
 WITH 20' RADIUS FLARED TURNOUTS

- NOTES
- 1 TOTAL PROJECT AREA- 25.01 ACRES
 - 2 TOTAL DISTURBED AREA- 3.907 ACRES
 - 3 ALL SEDIMENT AND EROSION CONTROL MEASURES TO CONFORM TO THE LATEST MODERN SEDIMENT AND EROSION CONTROL DESIGN MANUAL

PRELIMINARY SEDIMENT AND EROSION CONTROL PLAN



Wrenn Engineering
 Civil Engineering
 Land Planning
 Site Design

WRENN ENGINEERING CO.
 3710 DENVER RD.
 SUITE 200C
 DENVER, CO 80231
 (303) 455-3800
 (303) 455-3801
 WWW.WRENNECO.COM



PRELIMINARY ONLY
 NOT FOR CONSTRUCTION

SHAMBLEY MEADOWS SUBDIVISION PHASE IV
 SHEET TITLE
 PRELIMINARY SEDIMENT AND EROSION CONTROL PLAN

REVISION HISTORY	NO.	DATE	DESCRIPTION

Senior Engineer:
 K. WRENN
 Drawn By:
 K. WRENN

ISSUE NO.	DATE	DESCRIPTION

DATE DRAWN: 11/11/2009
 PROJECT #: 10100.00

SHEET OF
PEC