

TEMPORARY SKIMMER SEDIMENT BASIN
 TOTAL DRAINAGE AREA - 3.693 AC.
 TOTAL DISTURBED AREA - 2.207 AC.
 Q10YR = 10.3 CFS
 SURFACE AREA = 4.481 S.F.
 VOLUME = 3,973 C.F.

TEMPORARY SEDIMENT BASIN
 TOTAL DRAINAGE AREA - 0.281 AC.
 TOTAL DISTURBED AREA - 0.281 AC.
 Q10YR = 1.1 CFS
 SURFACE AREA = 479 S.F.
 VOLUME = 1,012 C.F.

ROADSIDE CHANNEL TO BE USED TO
 DIVERT RUNOFF TO TEMPORARY
 SEDIMENT BASIN LOCATED BETWEEN
 LOTS 4 & 5.

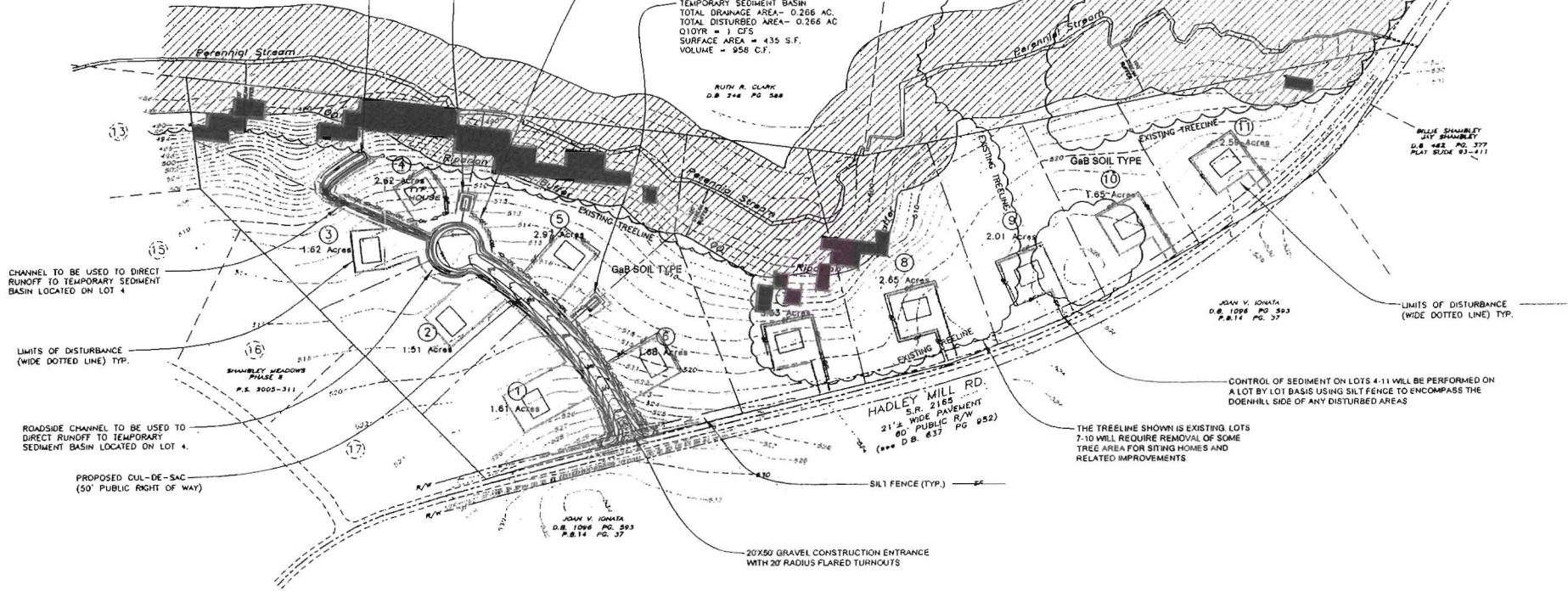
TEMPORARY SEDIMENT BASIN
 TOTAL DRAINAGE AREA - 0.266 AC.
 TOTAL DISTURBED AREA - 0.266 AC.
 Q10YR = 1 CFS
 SURFACE AREA = 435 S.F.
 VOLUME = 958 C.F.

RUTH A. CLARK
 D.B. 246 PG. 288

TROY M. HOWARD ENTERPRISES, LLC
 D.B. 1418 PG. 736

JOHN V. JONATHAN
 D.B. 1098 PG. 593
 P.B. 14 PG. 373

JOHN V. JONATHAN
 D.B. 1098 PG. 593
 P.B. 14 PG. 373



CHANNEL TO BE USED TO DIRECT
 RUNOFF TO TEMPORARY SEDIMENT
 BASIN LOCATED ON LOT 4

LIMITS OF DISTURBANCE
 (WIDE DOTTED LINE) TYP.

ROADSIDE CHANNEL TO BE USED TO
 DIRECT RUNOFF TO TEMPORARY
 SEDIMENT BASIN LOCATED ON LOT 4.

PROPOSED CUL-DE-SAC
 (50' PUBLIC RIGHT OF WAY)

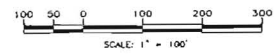
CONTROL OF SEDIMENT ON LOTS 4-11 WILL BE PERFORMED ON
 A LOT BY LOT BASIS USING Silt FENCE TO ENCOMPASS THE
 DOWNHILL SIDE OF ANY DISTURBED AREAS

THE TREE LINE SHOWN IS EXISTING LOTS
 7-10 WILL REQUIRE REMOVAL OF SOME
 TREE AREA FOR SITING HOMES AND
 RELATED IMPROVEMENTS.

NOTES.

- 1 TOTAL PROJECT AREA - 25.01 ACRES
- 2 TOTAL DISTURBED AREA - 3.907 ACRES
- 3 ALL SEDIMENT AND EROSION CONTROL MEASURES TO CONFORM TO THE LATEST MCDENR SEDIMENT AND EROSION CONTROL DESIGN MANUAL.

PRELIMINARY SEDIMENT AND EROSION CONTROL PLAN



Wrenn Engineering
 Civil Engineering
 Land Planning
 Site Design

PRELIMINARY ONLY
 NOT FOR CONSTRUCTION

SHAMBLEY MEADOWS SUBDIVISION PHASE IV
 SHEET TITLE
 PRELIMINARY SEDIMENT AND EROSION CONTROL PLAN

| REVISION HISTORY | NO. | DATE | DESCRIPTION |
|------------------|-----|------|-------------|
| | | | |
| | | | |
| | | | |
| | | | |

Senior Engineer:
 K. WRENN
 Drawn By:
 K. WRENN

| ISSUE NO. | DATE | DESCRIPTION |
|-----------|----------|----------------------|
| 1 | 11/19/10 | FIRST PLAT SUBMITTAL |

DATE DRAWN: _____ FILE NAME: _____
 PROJECT #: 10100.00 PROJECT MANAGER: _____
 SHEET OF: **PEC**