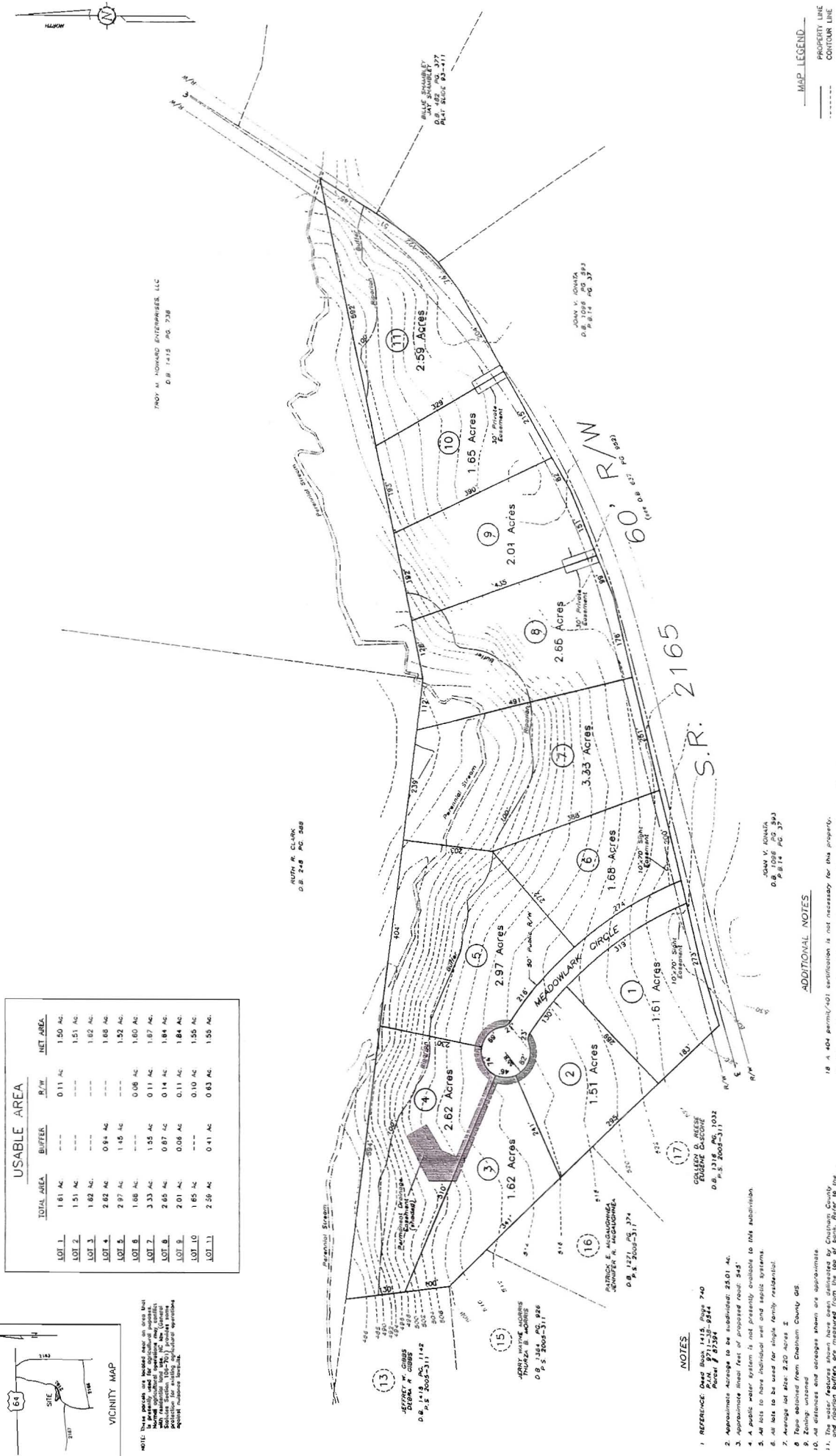


LOT #	TOTAL AREA	BUFFER	R/W	NET AREA
LOT 1	1.61 Ac.	---	0.11 Ac.	1.50 Ac.
LOT 2	1.51 Ac.	---	1.51 Ac.	1.51 Ac.
LOT 3	1.62 Ac.	---	1.62 Ac.	1.62 Ac.
LOT 4	2.62 Ac.	0.64 Ac.	---	1.98 Ac.
LOT 5	2.97 Ac.	1.45 Ac.	---	1.52 Ac.
LOT 6	1.68 Ac.	---	0.08 Ac.	1.60 Ac.
LOT 7	3.33 Ac.	1.55 Ac.	0.11 Ac.	1.87 Ac.
LOT 8	2.65 Ac.	0.67 Ac.	0.14 Ac.	1.84 Ac.
LOT 9	2.01 Ac.	0.06 Ac.	0.11 Ac.	1.84 Ac.
LOT 10	1.65 Ac.	---	0.10 Ac.	1.55 Ac.
LOT 11	2.59 Ac.	0.41 Ac.	0.63 Ac.	1.55 Ac.

NOTE: These areas are based on the lot area and are not intended to be used for any other purpose. The lot area is based on the lot area and is not intended to be used for any other purpose. The lot area is based on the lot area and is not intended to be used for any other purpose.



VICINITY MAP



ADDITIONAL NOTES

1. This property is not located within a designated 14-day flood hazard zone.
2. The water supply system shown here has been delineated by Chatham County and is shown on the map as a dashed line.
3. The water supply system shown here has been delineated by Chatham County and is shown on the map as a dashed line.
4. The water supply system shown here has been delineated by Chatham County and is shown on the map as a dashed line.
5. The water supply system shown here has been delineated by Chatham County and is shown on the map as a dashed line.
6. The water supply system shown here has been delineated by Chatham County and is shown on the map as a dashed line.
7. The water supply system shown here has been delineated by Chatham County and is shown on the map as a dashed line.
8. The water supply system shown here has been delineated by Chatham County and is shown on the map as a dashed line.
9. The water supply system shown here has been delineated by Chatham County and is shown on the map as a dashed line.
10. The water supply system shown here has been delineated by Chatham County and is shown on the map as a dashed line.
11. The water supply system shown here has been delineated by Chatham County and is shown on the map as a dashed line.
12. The water supply system shown here has been delineated by Chatham County and is shown on the map as a dashed line.
13. The water supply system shown here has been delineated by Chatham County and is shown on the map as a dashed line.
14. The water supply system shown here has been delineated by Chatham County and is shown on the map as a dashed line.
15. The water supply system shown here has been delineated by Chatham County and is shown on the map as a dashed line.
16. The water supply system shown here has been delineated by Chatham County and is shown on the map as a dashed line.
17. The water supply system shown here has been delineated by Chatham County and is shown on the map as a dashed line.
18. The water supply system shown here has been delineated by Chatham County and is shown on the map as a dashed line.
19. The water supply system shown here has been delineated by Chatham County and is shown on the map as a dashed line.
20. The water supply system shown here has been delineated by Chatham County and is shown on the map as a dashed line.
21. The water supply system shown here has been delineated by Chatham County and is shown on the map as a dashed line.
22. The water supply system shown here has been delineated by Chatham County and is shown on the map as a dashed line.
23. The water supply system shown here has been delineated by Chatham County and is shown on the map as a dashed line.
24. The water supply system shown here has been delineated by Chatham County and is shown on the map as a dashed line.
25. The water supply system shown here has been delineated by Chatham County and is shown on the map as a dashed line.

NOTES

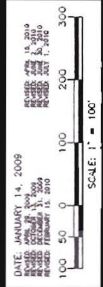
1. Reference: P.M. 11-11-11, Page 740
2. Approximate acreage to be subdivided: 25.01 Ac.
3. Approximate total feet of proposed road: 245'
4. A public water system is not presently available to this subdivision.
5. All lots to have individual well and septic systems.
6. All lots to be used for single family residential.
7. Average lot size: 2.50 Acres ±
8. Top obtained from Chatham County GIS
9. All elevations and setbacks shown are approximate.
10. The water features shown here have been delineated by Chatham County and are shown on the map as a dashed line.
11. The water features shown here have been delineated by Chatham County and are shown on the map as a dashed line.
12. Owner: H. S. PROPERTIES, INC. (919)-548-2312
13. The water supply system shown here has been delineated by Chatham County and is shown on the map as a dashed line.
14. There are no State Designated Wetland Protection Areas on this property.
15. The water supply system shown here has been delineated by Chatham County and is shown on the map as a dashed line.
16. The water supply system shown here has been delineated by Chatham County and is shown on the map as a dashed line.
17. The water supply system shown here has been delineated by Chatham County and is shown on the map as a dashed line.
18. The water supply system shown here has been delineated by Chatham County and is shown on the map as a dashed line.
19. The water supply system shown here has been delineated by Chatham County and is shown on the map as a dashed line.
20. The water supply system shown here has been delineated by Chatham County and is shown on the map as a dashed line.
21. The water supply system shown here has been delineated by Chatham County and is shown on the map as a dashed line.
22. The water supply system shown here has been delineated by Chatham County and is shown on the map as a dashed line.
23. The water supply system shown here has been delineated by Chatham County and is shown on the map as a dashed line.
24. The water supply system shown here has been delineated by Chatham County and is shown on the map as a dashed line.
25. The water supply system shown here has been delineated by Chatham County and is shown on the map as a dashed line.



Van R. Finch  
July 1, 2010

SHAMBLEY MEADOWS PHASE IV

FIRST PLAT



DATE: JANUARY 14, 2009  
 DRAWN BY: VAN R. FINCH  
 CHECKED BY: VAN R. FINCH  
 SCALE: 1" = 100'

HICKORY MOUNTAIN TOWNSHIP  
 CHATHAM COUNTY, N.C.  
 VAN R. FINCH - LAND SURVEYS, P.A.  
 109 Hillsboro St., Pittsboro, N.C. 27312  
 919-542-2536

INDY M. HODGINS ENTERPRISES, LLC  
 D.B. 1415 PG. 738

RUTH R. CLARK  
 D.B. 248 PG. 569

MILLS SHAMBLEY  
 D.B. 182 PG. 377  
 PLAT 802 PG. 171

JOHN V. KOVATA  
 D.B. 104 PG. 373

JOHN V. KOVATA  
 D.B. 104 PG. 373

COLLEEN D. REESE  
 FURBER GARDNER  
 D.B. 131 PG. 1031

THURMA W. MOORE  
 THURMA W. MOORE  
 D.B. 137 PG. 174

DEBRA F. GIBBS  
 DEBRA F. GIBBS  
 D.B. 118 PG. 1142