

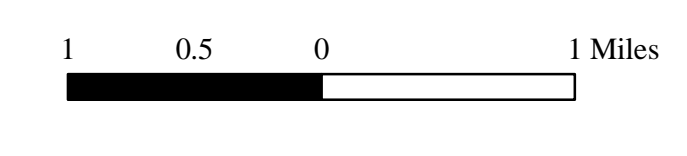
Legend

Corridor Overlay Districts

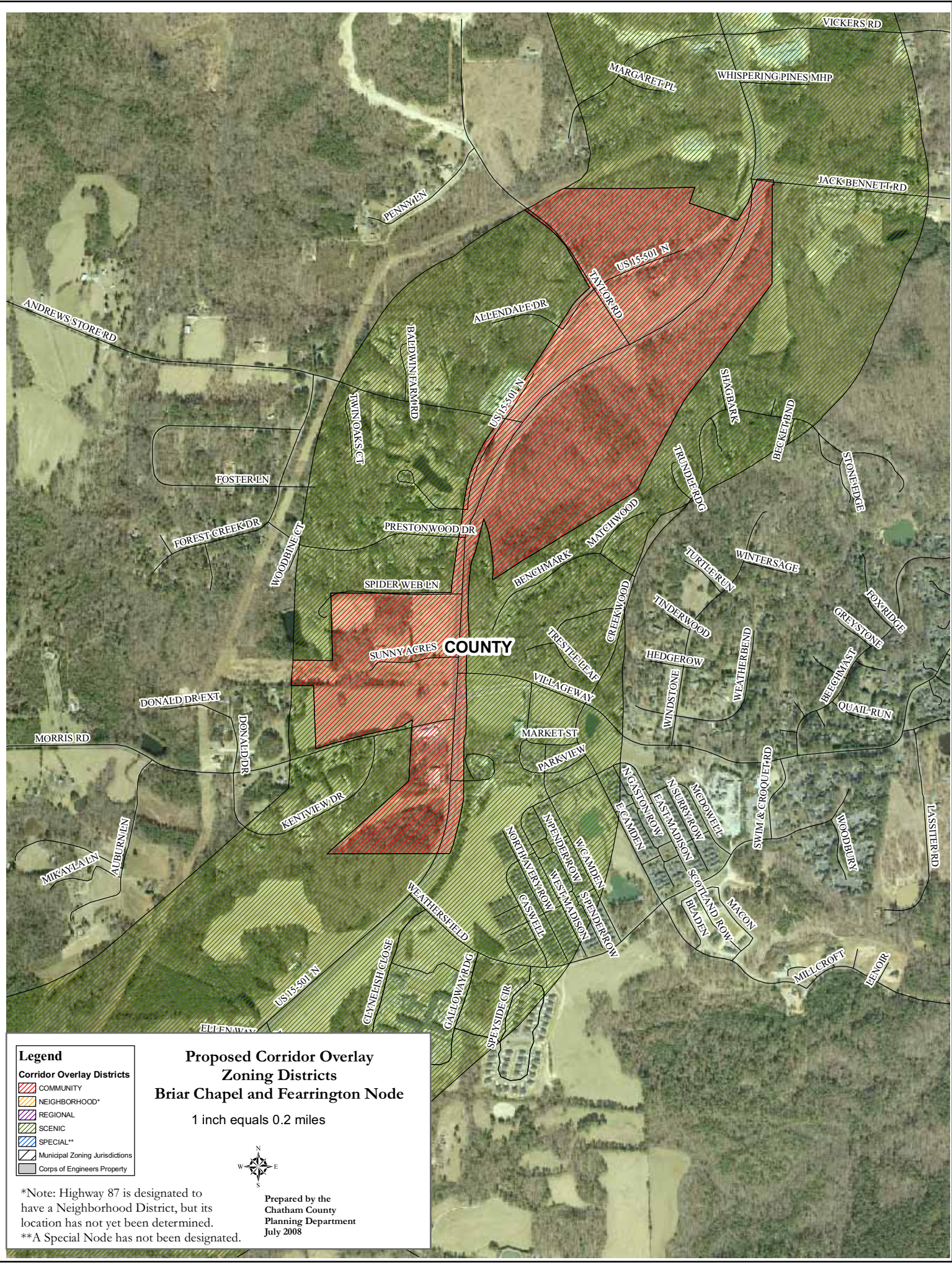
- COMMUNITY
- NEIGHBORHOOD*
- REGIONAL**
- SCENIC
- SPECIAL
- Municipal Zoning Jurisdictions
- Corps of Engineers Property

Proposed Corridor Overlay Zoning Districts

1 inch equals 0.8 miles



*Note: Highway 87 is designated to have a Neighborhood District, but the location has not yet been determined.
 **A Regional Node has not been designated.



Legend

Corridor Overlay Districts	
[Red with diagonal hatching]	COMMUNITY
[Orange with diagonal hatching]	NEIGHBORHOOD*
[Yellow with diagonal hatching]	REGIONAL
[Green with diagonal hatching]	SCENIC
[Blue with diagonal hatching]	SPECIAL**
[White with black outline]	Municipal Zoning Jurisdictions
[Grey with diagonal hatching]	Corps of Engineers Property

**Proposed Corridor Overlay
Zoning Districts
Briar Chapel and Fearington Node**

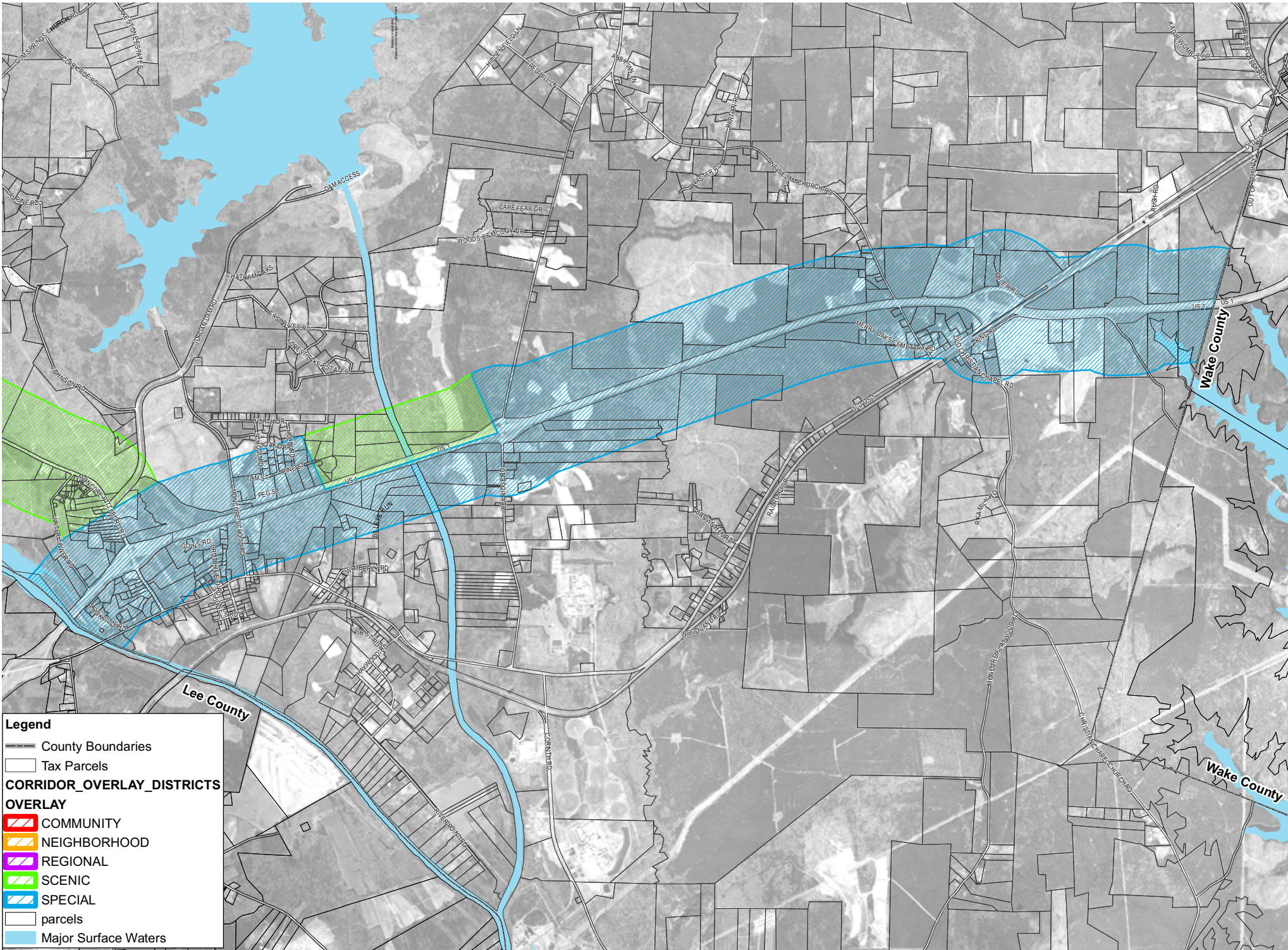
1 inch equals 0.2 miles



*Note: Highway 87 is designated to have a Neighborhood District, but its location has not yet been determined.
**A Special Node has not been designated.

Prepared by the
Chatham County
Planning Department
July 2008

Regional Node and Scenic Corridor Overlay Districts Moncure and US 1



Legend

- County Boundaries
- Tax Parcels

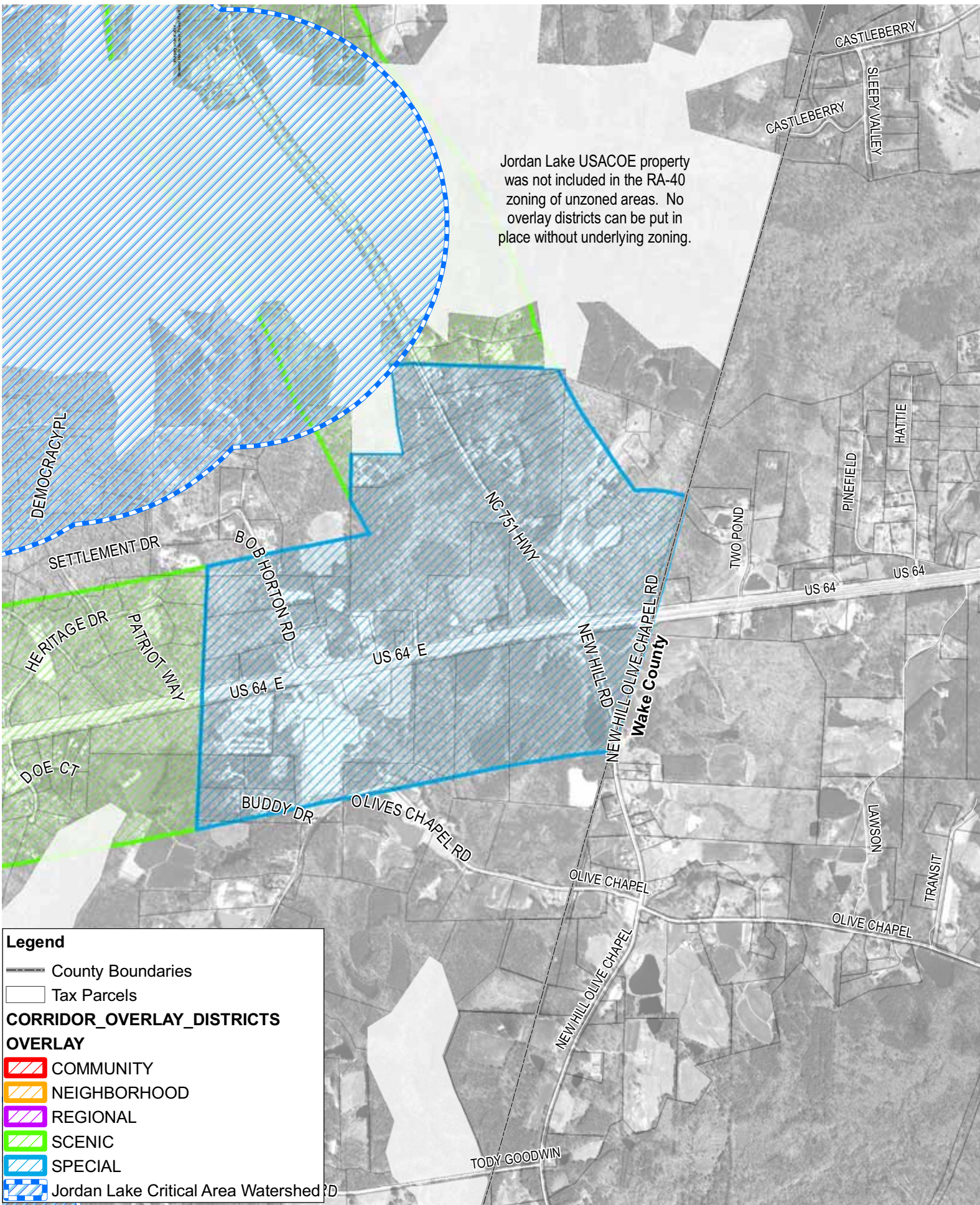
CORRIDOR_OVERLAY_DISTRICTS OVERLAY

- COMMUNITY
- NEIGHBORHOOD
- REGIONAL
- SCENIC
- SPECIAL
- parcels
- Major Surface Waters

1,000 0 2,000 Feet

Information depicted herein is for reference purposes only and is compiled from the best available sources. Source data were captured by different agencies at different scales at different times and may result in inaccuracies among the features represented. The Triangle Council of Governments assumes no responsibility for errors arising from the misuse of this map.





Jordan Lake USACOE property was not included in the RA-40 zoning of unzoned areas. No overlay districts can be put in place without underlying zoning.

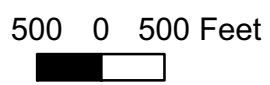
Legend

- County Boundaries
- Tax Parcels

CORRIDOR_OVERLAY_DISTRICTS

OVERLAY

- COMMUNITY
- NEIGHBORHOOD
- REGIONAL
- SCENIC
- SPECIAL
- Jordan Lake Critical Area Watershed



Information depicted hereon is for reference purposes only and is compiled from the best available sources. Source data were captured by different agencies at different scales at different times and may result in inconsistencies among the features represented. The Triangle J Council of Governments assumes no responsibility for errors arising from the misuse of this map.

