



Verticality, Inc.
7245 Clifton Road
Clifton, VA 20124

13 June 2008

Mrs. Angela Burchett
Planning Department
County of Chatham
PO Box 54
Pittsboro, NC 27312-0054

Dear Mrs. Burchett,

2008 Chatham County Tower Plan

Further to our telephone conversation regarding the heights of proposed towers for the 2008 tower plan, I enclose propagation maps indicating the additional coverage that could be obtained by increasing tower height to the preferred Chatham County height of 199'.

Conclusion:

The increase to 199' indicates an increase in propagation at the -92dBm level of up to 10% for a PCS carrier.

Comment:

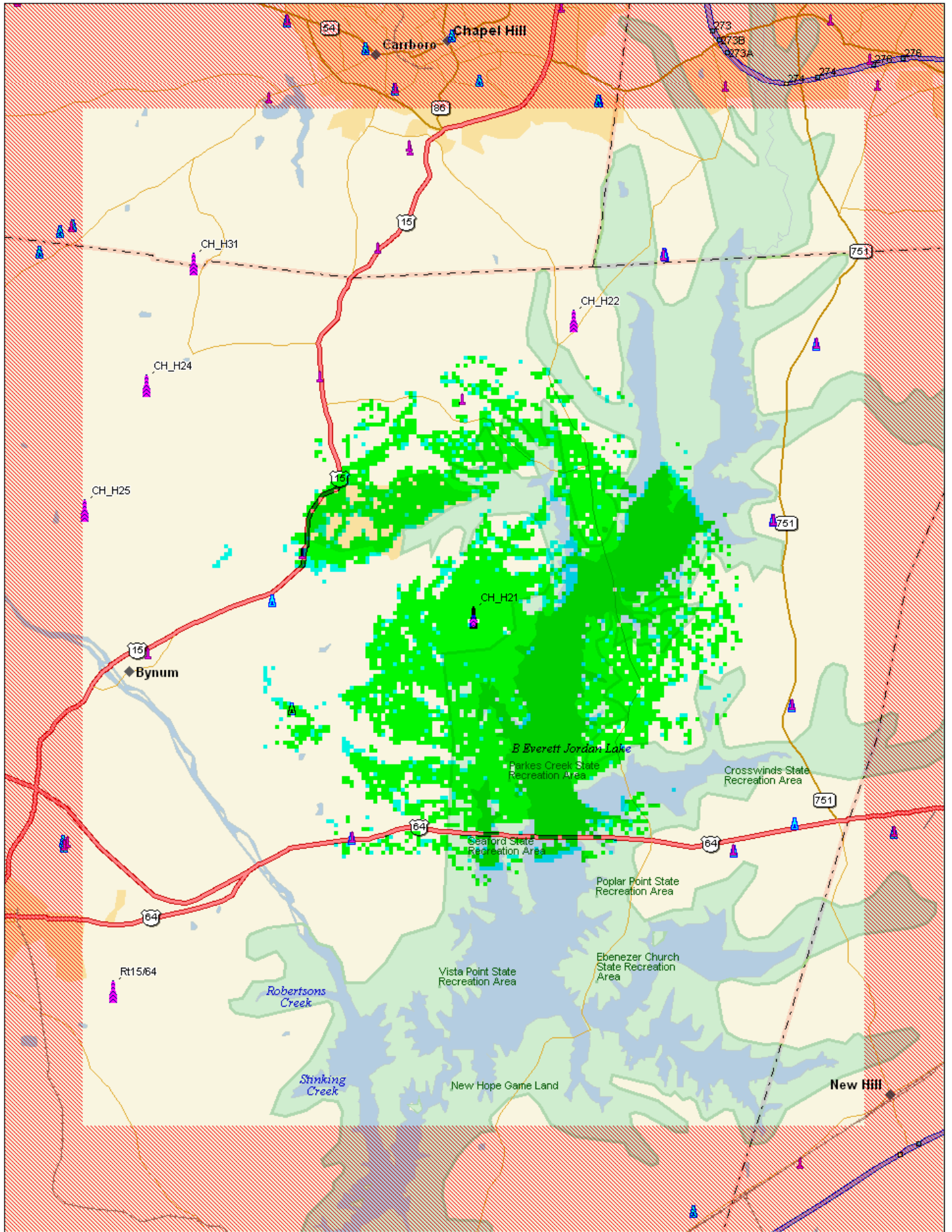
It is Verticality's view that approving the tower search ring at 199' for each of the six proposed search ring is advantageous to Chatham County for the following reasons:

1. A tower height of 199' will allow maximum physical space for collocation of multiple carriers.
2. The optimal height for the tower cannot be determined until the exact height above mean sea level of the tower location is determined and until the relevant wireless carrier has conducted network design incorporating the precise location. If a height of less than 199' is required then the application for that location could be made at the reduced height.
3. A height of 199' will allow flexibility for future wireless providers to design networks which best suit their business model and their customer requirements, these may be different to those of existing operators.

Sincerely

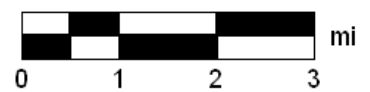
A handwritten signature in black ink, appearing to read "Ian Ormesher", written over a horizontal line.

Ian Ormesher
Director
Verticality, Inc.
www.verticalityinc.com
Tel: 703 802 8714

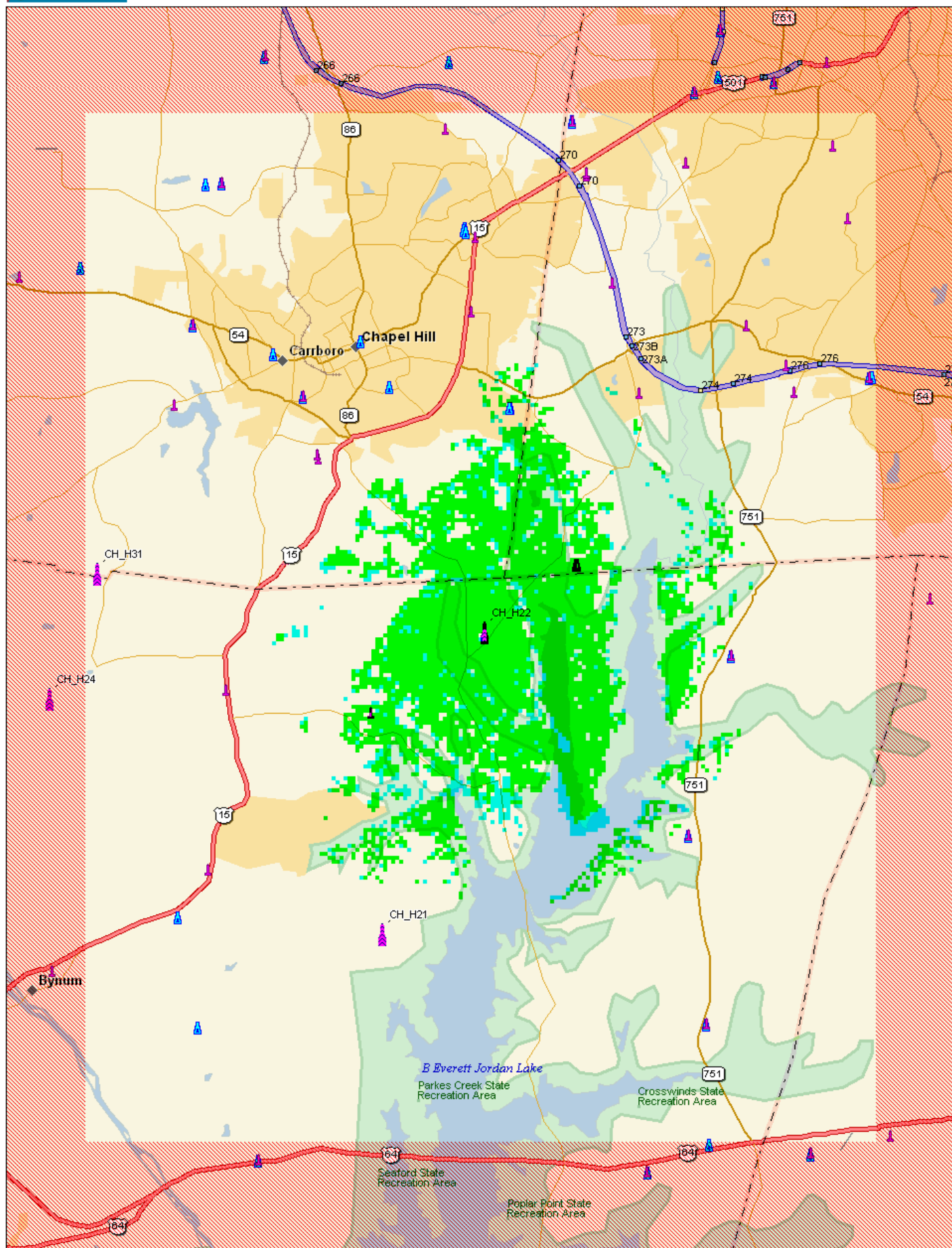


Data use subject to license.
 © 2004 DeLorme. XMap® 4.5.
 www.delorme.com

- Key**
- Propagation at -92dBm from 199'
 - Propagation at -92dBm from 180'

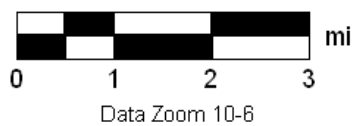
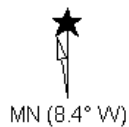


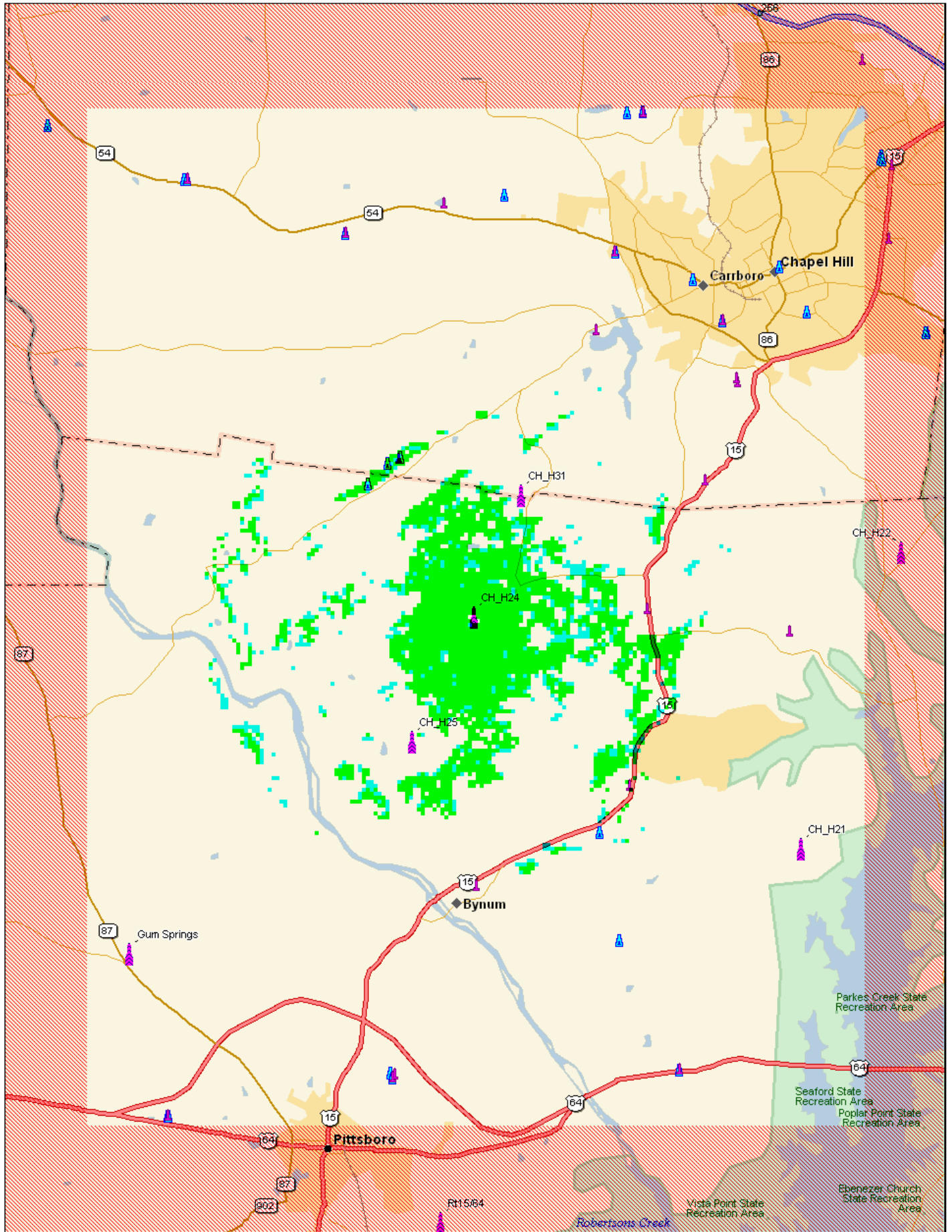
Data Zoom 10-6



Data use subject to license.
 © 2004 DeLorme. XMap® 4.5.
 www.delorme.com

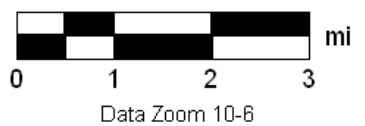
- Key**
- Propagation at -92dBm from 199'
 - Propagation at -92dBm from 180'

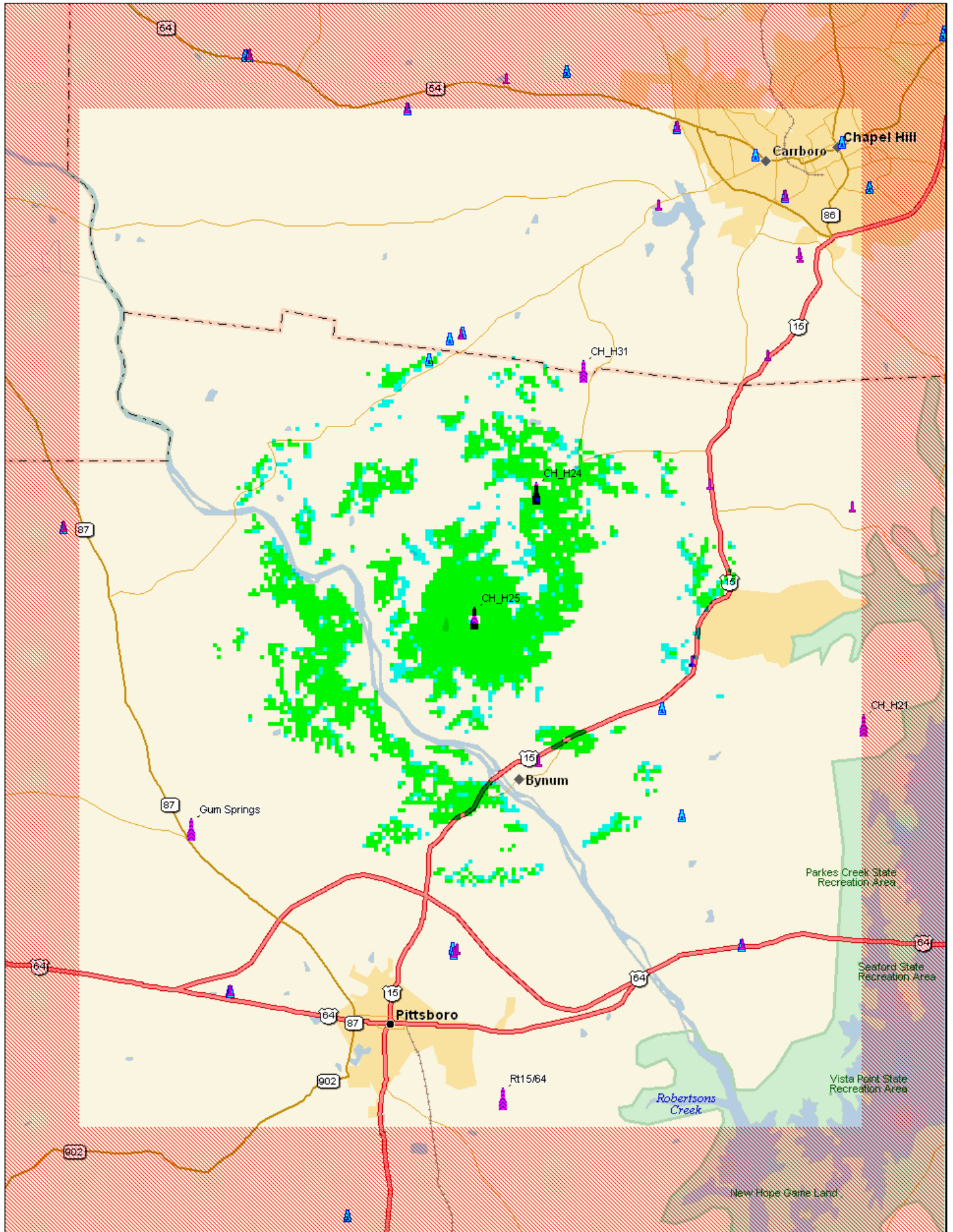




Data use subject to license.
 © 2004 DeLorme. XMap® 4.5.
 www.delorme.com

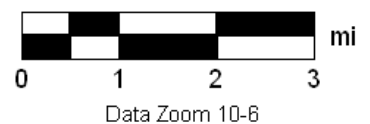
Key
■ Propagation at -92dBm from 199'
■ Propagation at -92dBm from 180'

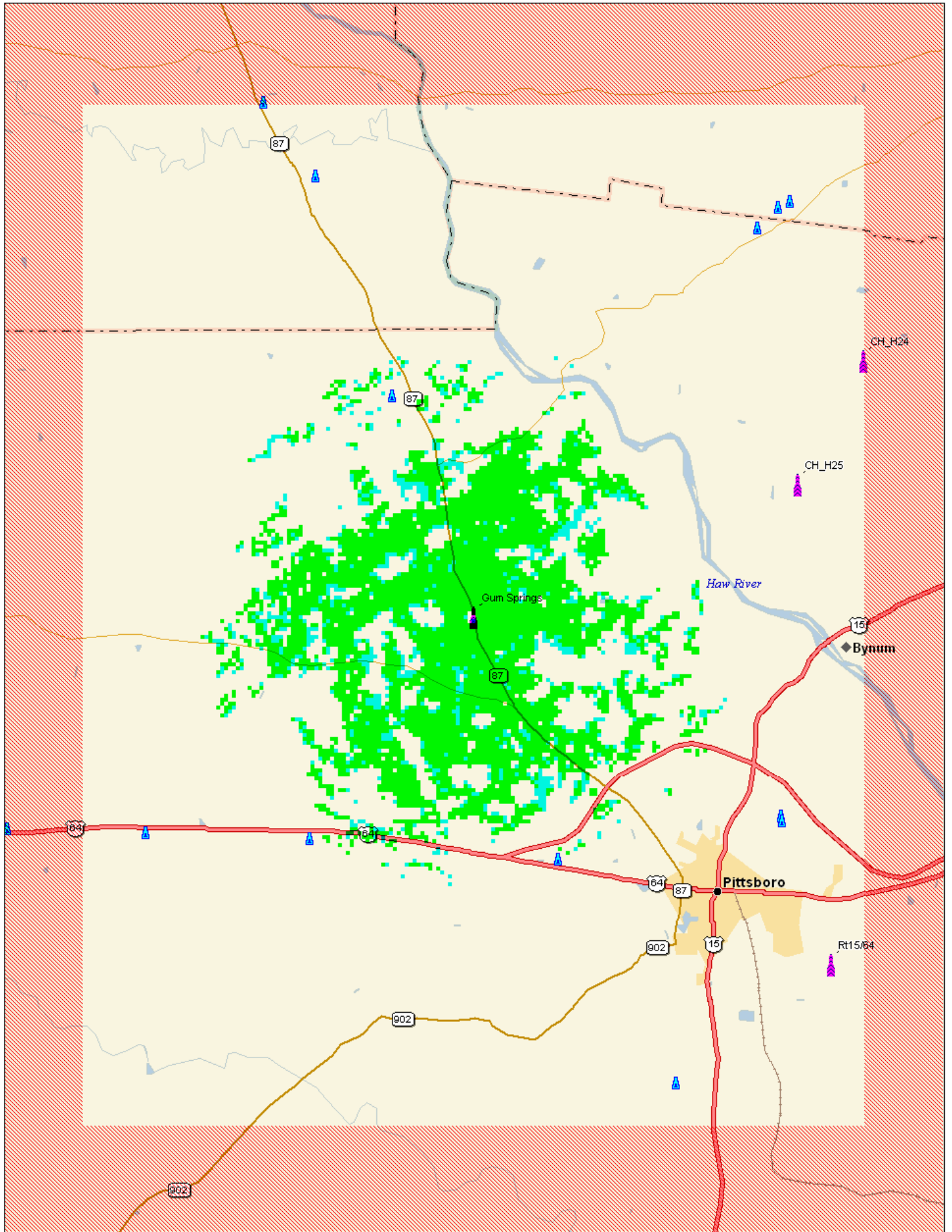




Data use subject to license.
 © 2004 DeLorme. XMap® 4.5.
 www.delorme.com

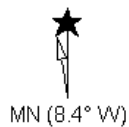
- Key**
- Propagation at -92dBm from 199'
 - Propagation at -92dBm from 180'



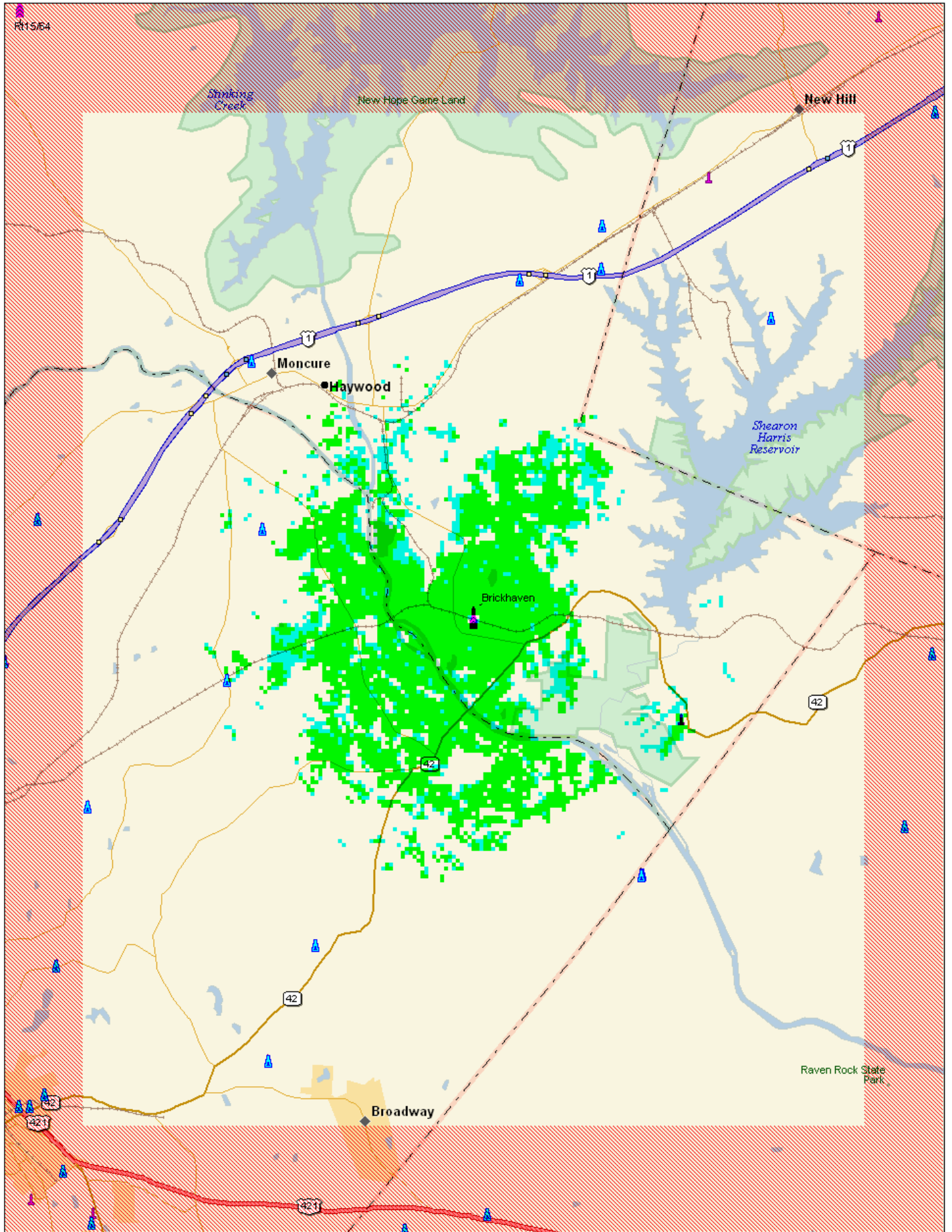


Data use subject to license.
 © 2004 DeLorme. XMap® 4.5.
 www.delorme.com

- Key**
- Propagation at -92dBm from 199'
 - Propagation at -92dBm from 180'

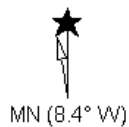


Data Zoom 10-6



Data use subject to license.
 © 2004 DeLorme. XMap® 4.5.
 www.delorme.com

- Key**
- Propagation at -92dBm from 199'
 - Propagation at -92dBm from 180'



Data Zoom 10-6