

Key

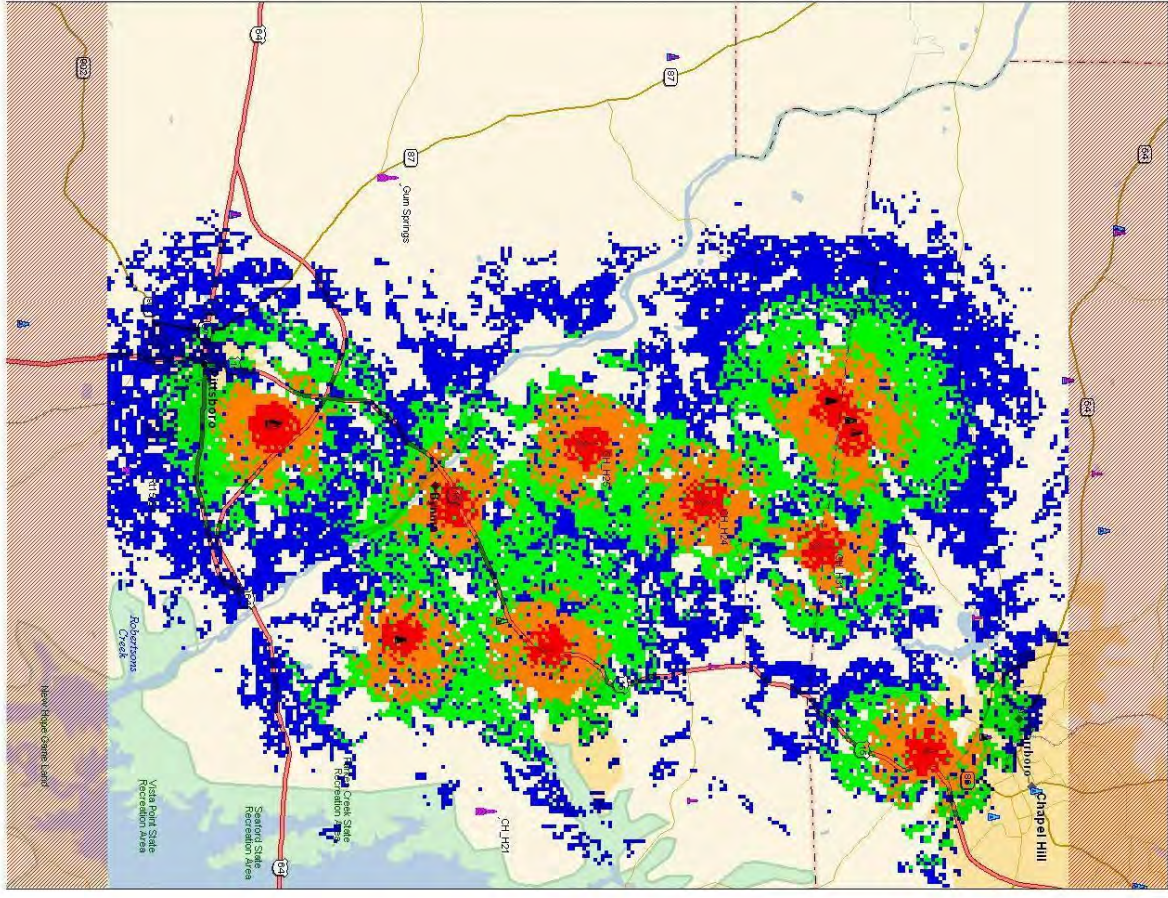
Structures/Towers

- Existing structure recorded on FCC database
- Existing structure from tower company websites
- Proposed Vertically tower

RF Propagation

Signal strength levels: Chatham County criteria

- RF signal stronger than -72 dBm (in building - business)
- RF signal -72 dBm to -80 dBm (in building - residential)
- RF signal -80 dBm to -85 dBm (in car/portable)
- RF signal -91 dBm to -95 dBm (pedestrian)



Data use subject to license:
 © 2004 DeLorme, XMap@ 4.5
 www.delorme.com

MN (8.5° W)

0 1 2 3
 mi

Data Zoom 10.8

Vertically Tower	Lat	Lon	Existing Structure Tower	Lat	Lon	Ht (m)	Ht (ft)
CH H25	35.48 24	-79.09 20	CC16	35.44 10	-79.09 31	94.5	310
			Altell 1	35.44 09	-79.09 26	121.9	400
			Hocchie Fm	35.46 58	-79.08 53	70.1	230
			AMT 4	35.46 41	-79.08 13	46	147
			CC17	35.48 01	-79.08 43	89.9	295
			Gum Springs	35.46 90	-79.11 36	80.6	265
			AMT 7	35.50 19	-79.05 26	80.6	265
			CH H31	35.51 50	-79.07 29	80.6	265
			CH H24	35.50 13	-79.08 16	80.6	265
			UNC3	35.51 59	-79.08 59	316	1037
			CLR CH1	35.52 20	-79.09 27	240	787
			CC18	35.53 20	-79.09 57	29	81