

Key

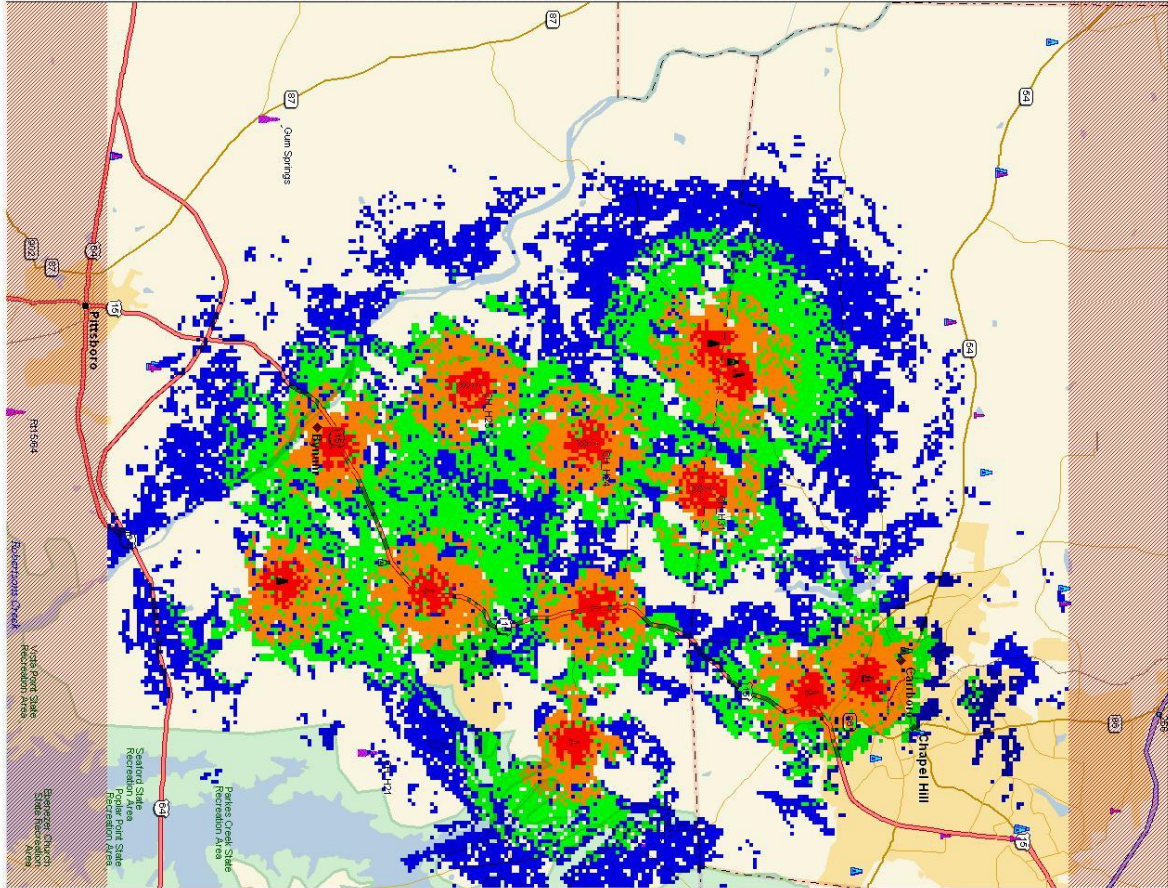
Structures/Towers

- Existing structure recorded on FCC database
- Existing structure from tower company websites
- Proposed Vertically tower

RF Propagation

Signal strength levels: Chatham County criteria

- RF signal stronger than -72 dBm (in building - business)
- RF signal -72 dBm to -80 dBm (in building residential)
- RF signal -80 dBm to -85 dBm (in car portable)
- RF signal -85 dBm to -95 dBm (pedestrian)



Data use subject to license:
© 2004 Delorme, XMap@ 4.5
www.delorme.com

MN (8.5° W)

0 1 2 3
mi
Data Zoom 10.8

Vertically Tower	Lat	Lon	Existing Structure Tower	Lat	Lon	Ht (m)	Ht (ft)
CH 154	35.5013	-79.0816	CH 3	35.5159	-79.0859	316	1037
			CH 11	35.5220	-79.0727	240	787
			CH 10	35.5208	-79.0727	240	787
			MSA	35.5208	-79.0727	543	1781
			AMT 7	35.5019	-79.0707	50.8	1668
			AMT 7	35.5150	-79.0728	50.8	1668
			CH 151	35.4834	-79.0920	0	0
			CH 155	35.4841	-79.0813	45	147
			AMT 4	35.4558	-79.0553	70.1	230
			Historic Fm	35.4801	-79.0543	59.9	197
			CC17				