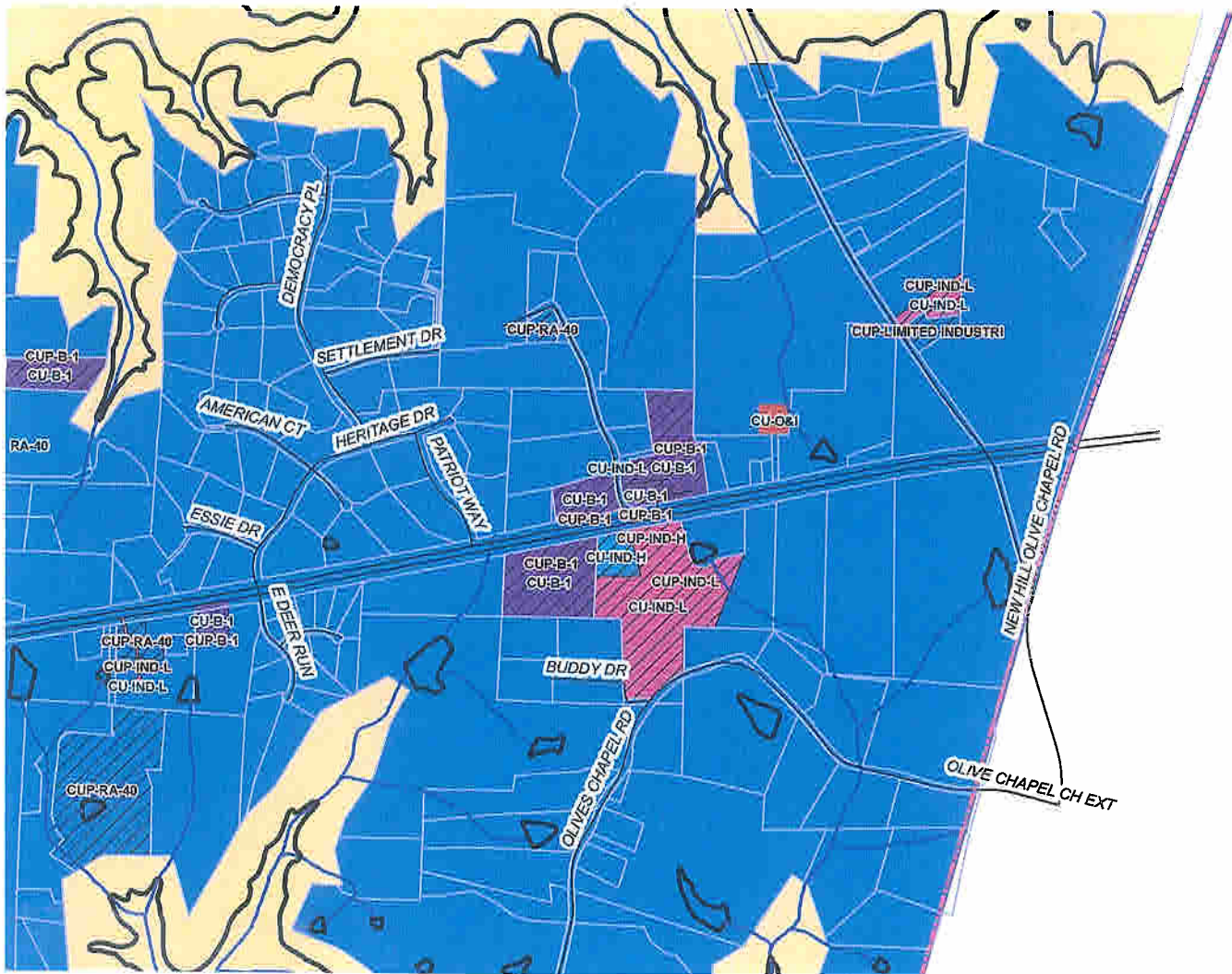


SURROUNDING PROPERTIES EXISTING ZONING



Chatham County Map



Disclaimer: This map is prepared for the inventory of real property found within this jurisdiction and is compiled from recorded deeds, plats, and other public records and data. Users of this map are hereby notified that the aforementioned public primary information sources should be consulted for verification of the information contained on this map. The County and the mapping companies assume no legal responsibilities for the information contained on this map.

Map Scale
1 inch = 950 feet
Grid based on the North
Carolina State Plane Coordinate
System, 1983 North American
Datum.

