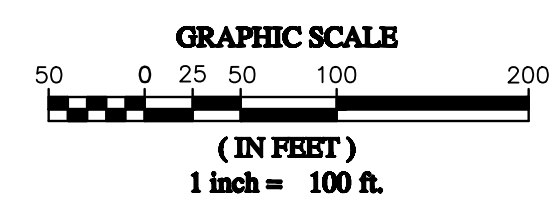
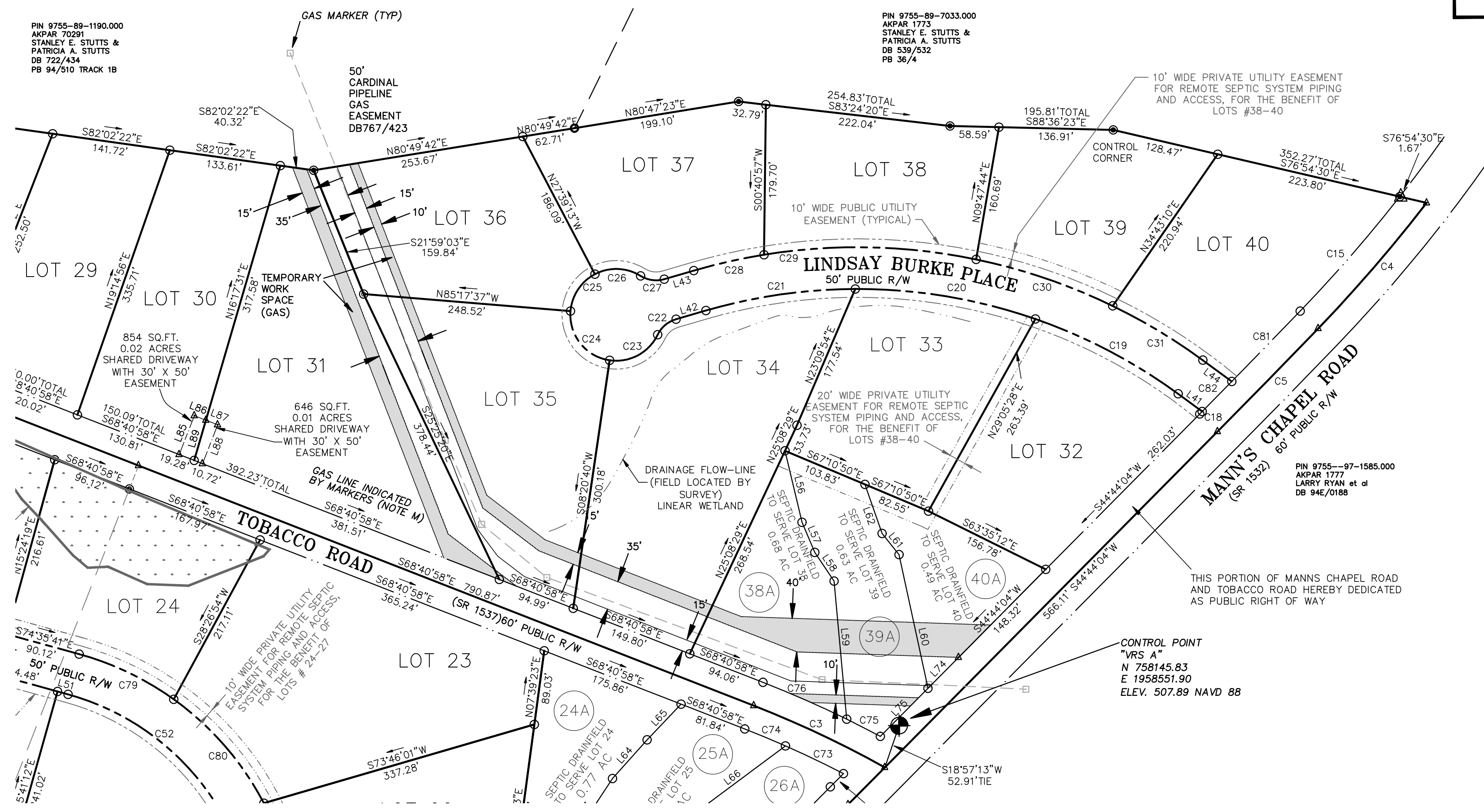


GRID TIE DATA
 NCGS "MEACHAM"
 NAD 83/01
 N 768395.14
 E 1963424.92
 TIE FROM NCGS "MEACHAM"
 TO CONTROL POINT "VRS A"
 S25°25'43"W
 11348.78' GRID
 COMBINED GRID FACTOR
 0.999905700
 PROJECT LOCALIZED AT
 CONTROL POINT "VRS A"



PROFESSIONAL LAND SURVEYOR LICENSE NUMBER 3248

COPYRIGHT © 2008
SUMMIT
CONSULTING ENGINEERS

DRAWING ALTERATION

IT IS A VIOLATION OF LAW FOR ANY PERSON UNLESS ACTING UNDER THE DIRECTION OF LICENSED ARCHITECT, PROFESSIONAL ENGINEER, LANDSCAPE ARCHITECT, OR LAND SURVEYOR TO ALTER ANY ITEM ON THIS DOCUMENT IN ANY WAY. ANY LICENSEE WHO ALTERS THIS DOCUMENT IS REQUIRED BY LAW TO AFFIX HIS OR HER SEAL AND THE NOTATION "ALTERED BY" FOLLOWED BY HIS OR HER SIGNATURE AND SPECIFIC DESCRIPTION OF THE ALTERATIONS.

OWNERS ADDRESS:
 MANN'S CHAPEL PROPERTIES LLC
 728 RICHMOND ST.
 RALEIGH, NC, 27609

CLIENTS ADDRESS:
 SPANG DEVELOPMENT
 111 CLOSTER COURT
 SUITE 114
 CHAPEL HILL, NC, 27614
 CONTACT: BILL SPANG
 FAX: 460-6963

PARCEL NUMBER	67267	67266
PIN	9765-88-3649.000	9765-77-4883
REFERENCES	PB 37/34	DB 1307/806
PROJECT MANAGER	WHM	
DRAWN BY	JWS	

LEGEND:

- IRON ROD OR PIPE SET
- ⊙ EXISTING MONUMENT FOUND; IRON ROD OR PIPE UNLESS OTHERWISE DESCRIBED
- △ MATHEMATICAL POINT; NO MONUMENT SET
- CONCRETE MONUMENT
- ⊖ EXISTING IRON PIPE

PROPERTY SURVEYED FOR
MANN'S CHAPEL PROPERTIES, LLC

BALDWIN TWP., CHATHAM CO., NORTH CAROLINA
 FIELD WORK PERFORMED APRIL 7, 2006
 PROPERTY AS DESCRIBED IN DEED BOOK 1307/908
 STANDING IN THE NAME OF
 MANN'S CHAPEL PROPERTIES, LLC

SUMMIT
 Consulting Engineers

1000 Corporate Dr., Suite 101
 Hillsborough, NC 27278-8551
 Voice: (919) 732-3883 Fax: (919) 732-6676
 www.summit-engineer.com

PROJECT NO.
06-126

DRAWING
06-126_FINAL

SHEET 4 OF 4