

GRID TIE DATA
 NCGS "MEACHAM"
 NAD 83/01
 N 768395.14
 E 1963424.92
 TIE FROM NCGS "MEACHAM"
 TO CONTROL POINT "VRS A"
 S25°25'43"W
 11348.78' GRID
 COMBINED GRID FACTOR
 0.999905700
 PROJECT LOCALIZED AT
 CONTROL POINT "VRS A"
 (SEE SHEET 3 AND 4)



PROFESSIONAL LAND SURVEYOR LICENSE NUMBER 3248

PIN 9755-57-2282.000
 AKPAR 1731
 BLANCHE W. NORWOOD
 DB 05E/40
 SEE ALSO PB 97/393

PIN 9755-68-1288.000
 AKPAR 1685
 WIELER DFG LLC
 DB 1200/500
 PB 98/199

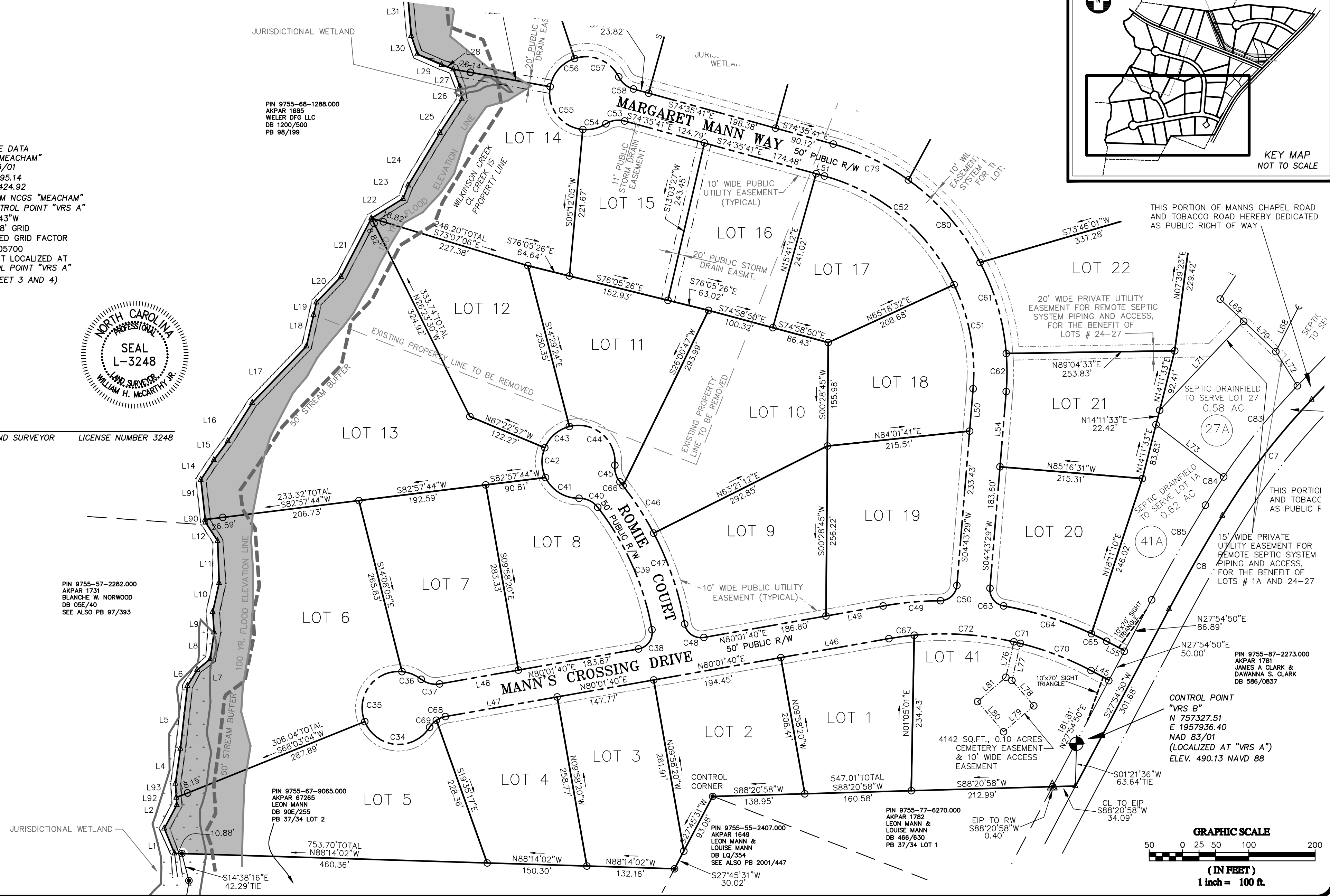
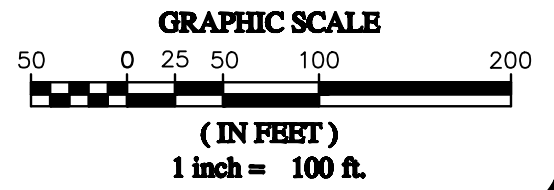
PIN 9755-67-9065.000
 AKPAR 67265
 LEON MANN
 DB 90E/255
 PB 37/34 LOT 2

PIN 9755-55-2407.000
 AKPAR 1649
 LEON MANN &
 LOUISE MANN
 DB LQ/354
 SEE ALSO PB 2001/447

PIN 9755-77-6270.000
 AKPAR 1782
 LEON MANN &
 LOUISE MANN
 DB 466/630
 PB 37/34 LOT 1

PIN 9755-87-2273.000
 AKPAR 1781
 JAMES A. CLARK &
 DAWANNA S. CLARK
 DB 586/0837

CONTROL POINT
 "VRS B"
 N 757327.51
 E 1957936.40
 NAD 83/01
 (LOCALIZED AT "VRS A")
 ELEV. 490.13 NAVD 88



COPYRIGHT © 2008
SUMMIT
CONSULTING ENGINEERS

DRAWING ALTERATION

IT IS A VIOLATION OF LAW FOR ANY PERSON UNLESS ACTING UNDER THE DIRECTION OF LICENSED ARCHITECT, PROFESSIONAL ENGINEER, LANDSCAPE ARCHITECT, OR LAND SURVEYOR TO ALTER ANY ITEM ON THIS DOCUMENT IN ANY WAY. ANY LICENSEE WHO ALTERS THIS DOCUMENT IS REQUIRED BY LAW TO AFFIX HIS OR HER SEAL AND THE NOTATION "ALTERED" FOLLOWED BY HIS OR HER SIGNATURE AND SPECIFIC DESCRIPTION OF THE ALTERATIONS.

OWNERS ADDRESS:
 1000 Corporate Dr., Suite 101
 Hillsborough, NC 27278-8551
 Phone: (919) 732-3883
 Fax: (919) 732-6676
 www.summit-engineer.com

CLIENTS ADDRESS:
 Mann's Chapel Properties, LLC
 1000 Corporate Dr., Suite 101
 Hillsborough, NC 27278-8551
 Phone: (919) 732-3883
 Fax: (919) 732-6676
 www.summit-engineer.com

PARCEL NUMBER	06126
PIN	9755-68-1288.000
REFERENCES	DB 1200/500 PB 98/199
PROJECT MANAGER	WMS
DRAWN BY	JMS

LEGEND:

- IRON ROD OR PIPE SET
- ⊙ EXISTING MONUMENT FOUND; IRON ROD OR PIPE UNLESS OTHERWISE DESCRIBED
- △ MATHEMATICAL POINT; NO MONUMENT SET
- CONCRETE MONUMENT
- EIP EXISTING IRON PIPE

PROPERTY SURVEYED FOR
MANN'S CHAPEL PROPERTIES, LLC

BALDWIN TWP., CHATHAM CO., NORTH CAROLINA
 FIELD WORK PERFORMED APRIL 7, 2008
 PROPERTY AS DESCRIBED IN DEED BOOK 1307/908
 SEALED IN THE NAME OF
MANN'S CHAPEL PROPERTIES, LLC

SUMMIT
 Consulting Engineers

1000 Corporate Dr., Suite 101
 Hillsborough, NC 27278-8551
 Voice: (919) 732-3883 Fax: (919) 732-6676
 www.summit-engineer.com

PROJECT NO.
06-126

DRAWING
06-126_FINAL

DATE: 06-12-08