

HALF DOLLAR ROAD  
S.R. 1565  
60' PUBLIC R/W

MANN'S CHAPEL ROAD - S.R. 1532

SEE  
SHEET  
2 OF 4

SEE  
SHEET  
3 OF 4

SEE  
SHEET  
4 OF 4

BRIAR CHAPEL SUBDIVISION  
PHASE 3 & 4  
(PB 2007, PG 430)  
(PB 2007, PG 464)

OVERALL VIEW  
FOR ILLUSTRATIVE PURPOSES ONLY

PRELIMINARY

#### REVIEW OFFICER CERTIFICATION

STATE OF NORTH CAROLINA, COUNTY OF CHATHAM

I, TINA STONE, REVIEW OFFICER FOR CHATHAM COUNTY, CERTIFY THAT THE MAP OR PLAT TO WHICH THIS CERTIFICATION IS AFFIXED MEETS ALL STATUTORY REQUIREMENTS FOR RECORDING.

TINA STONE, REVIEW OFFICER \_\_\_\_\_ DATE \_\_\_\_\_

BY \_\_\_\_\_ TITLE: \_\_\_\_\_

#### CERTIFICATE OF APPROVAL FOR RECORDING

I HEREBY CERTIFY THAT THE SUBDIVISION PLAT SHOWN HEREON HAS BEEN FOUND TO COMPLY WITH THE SUBDIVISION REGULATIONS FOR CHATHAM COUNTY, WITH THE EXCEPTION OF SUCH VARIANCES, IF ANY, AS NOTED BY THE BODY FOR RECORDING IN THE OFFICE OF THE COUNTY REGISTER OF DEEDS.

\_\_\_\_\_ 2007

CHAIRMAN, CHATHAM COUNTY BOARD OF COMMISSIONERS

I, JOSEPH N. GRADY, JR., CERTIFY THAT THIS PLAT WAS DRAWN UNDER MY SUPERVISION FROM AN ACTUAL SURVEY MADE UNDER MY SUPERVISION FROM DEED DESCRIPTION RECORDED IN BOOK AND PAGE (AS SHOWN); THAT THE BOUNDARIES NOT SURVEYED ARE CLEARLY INDICATED AND DRAWN FROM INFORMATION FOUND IN BOOK AND PAGE (AS SHOWN); THAT THE RATIO OF PRECISION AS CALCULATED IS 1:10,000; AND THAT THIS PLAT WAS PREPARED IN ACCORDANCE WITH G.S. 47-30 AS AMENDED. WITNESS MY ORIGINAL SIGNATURE, LICENSE NUMBER, AND SEAL THIS \_\_\_\_\_ DAY OF \_\_\_\_\_, A.D. 20\_\_\_\_

JOSEPH N. GRADY, JR. PLS L-4163

I HEREBY CERTIFY THAT THIS PLAT IS OF THE FOLLOWING TYPE: G.S. 47-30 (1)(1)(a). THIS SURVEY CREATES SUBDIVISION OF LAND WITHIN THE AREA OF A COUNTY OR MUNICIPALITY THAT HAS AN ORDINANCE THAT REGULATES PARCELS OF LAND.

JOSEPH N. GRADY, JR. PLS L-4163

#### SITE DATA

TOTAL NUMBER OF NEW LOTS CREATED: 5 LOTS

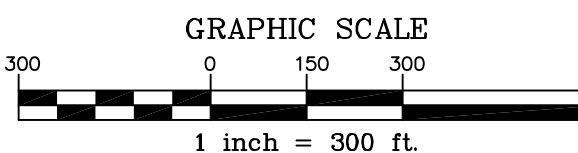
LOT AREA		
NEW TRACT B-1	4,418,011 SF.	101.42 AC.
NEW TRACT B-2	128,033 SF.	2.94 AC.
NEW TRACT B-3	1,521,005 SF.	34.92 AC.
NEW TRACT B-4	4,737,268 SF.	108.75 AC.
NEW TRACT C-2	3,151,086 SF.	72.34 AC.

#### LOTS RENAMED:

NEW TRACT B-1	FORMERLY PART OF TRACT B-1 (PB 2007, PG 246)
NEW TRACT B-2	FORMERLY PART OF TRACT C (WEST) (PB 2007, PG 430)
NEW TRACT B-3	FORMERLY PART OF TRACT C (WEST) (PB 2007, PG 430)
NEW TRACT B-4	FORMERLY PART OF TRACT C (WEST) (PB 2007, PG 430)
NEW TRACT C-2	FORMERLY PART OF TRACT B-1 (PB 2007, PG 246)
NEW TRACT C-3	FORMERLY TRACT B-2 (PB 2005, PG 262)

#### GENERAL NOTES

- THIS IS A SURVEY OF EXISTING PARCELS OF LAND. THIS IS AN EXEMPT SUBDIVISION PLAT.
- BEARINGS FOR THIS SURVEY ARE BASED ON N.C. GRID (NAD 83) N.C.G.S. MONUMENTS "MEACHUM" & "GUNTER" HAVING COORDINATES AS SHOWN ON SHEET 2 OF 4.
- ALL DISTANCES ARE HORIZONTAL GROUND DISTANCES.
- FLOOD NOTE: A PORTION OF THIS PROPERTY IS LOCATED IN SPECIAL FLOOD HAZARD AREA "AE" AS SHOWN ON FEMA F.I.R.M. MAP # 3710976500J WITH AN EFFECTIVE DATE OF FEBRUARY 2, 2007; THERE IS ALSO A CONDITIONAL LETTER OF MAP REVISION IN REVIEW WITH FEMA AS OF 4-9-2007 FOR POKEBERRY CREEK, CASE #07-04-3196R.
- REFERENCES:  
DEED BOOK 1198, PAGE 510 PLAT BOOK 2005, PAGE 262  
PLAT BOOK 2007, PAGE 400 PLAT BOOK 2007, PAGE 430  
PLAT BOOK 2007, PAGE 437 OF THE CHATHAM COUNTY REGISTRY  
PIN 9765-67-8520 PARCEL # 2617  
PIN 9765-64-8664 PARCEL # 82826  
PIN 9765-53-2812 PARCEL # 82827
- NO GRID MONUMENTS FOUND WITHIN 2000' OF SITE.



N.C. GRID (NAD 83)

McADAMS

SHEET NO.

1-4

DATE

12/10/2007

SCALE

1" = 300'

BY

EMM

DATE

12/10/2007

BY

JNC

DATE

12/10/2007

BY

JNC

DATE

12/10/2007

BY

JNC

DATE

12/10/2007

BY

JNC

DATE

12/10/2007

BY

JNC

DATE

12/10/2007

BY

JNC

DATE

12/10/2007

BY

JNC

DATE

12/10/2007

BY

JNC

DATE

12/10/2007

BY

JNC

DATE

12/10/2007

BY

JNC

DATE

12/10/2007

BY

JNC

DATE

12/10/2007

BY

JNC

DATE

12/10/2007

BY

JNC

DATE

12/10/2007

BY

JNC

DATE

12/10/2007

BY

JNC

DATE

12/10/2007

BY

JNC

DATE

12/10/2007

BY

JNC

DATE

12/10/2007

BY

JNC

DATE

12/10/2007

BY

JNC

DATE

12/10/2007

BY

JNC

DATE

12/10/2007

BY

JNC

DATE

12/10/2007

BY

JNC

DATE

12/10/2007

BY

JNC

DATE

12/10/2007

BY

JNC

DATE

12/10/2007

BY

JNC

DATE

12/10/2007

BY

JNC

DATE

12/10/2007

BY

JNC

DATE

12/10/2007

BY

JNC

DATE

12/10/2007

BY

JNC

DATE

12/10/2007

BY

JNC

DATE

12/10/2007

BY

JNC

DATE

12/10/2007

BY

JNC

DATE

12/10/2007

BY

JNC

DATE

12/10/2007

BY

JNC

DATE

12/10/2007

BY

JNC

DATE

12/10/2007

BY

JNC

DATE

12/10/2007

BY

JNC

DATE

12/10/2007

BY

JNC

DATE

12/10/2007

BY

JNC

DATE

12/10/2007

BY

JNC

DATE

12/10/2007

BY

JNC

DATE

12/10/2007

BY

JNC

DATE

12/10/2007

BY

JNC

DATE

12/10/2007

BY

JNC

DATE

12/10/2007

BY

JNC

DATE

12/10/2007

BY

JNC

DATE

12/10/2007

BY

JNC

DATE

12/10/2007

BY

JNC

DATE

12/10/2007

BY

JNC

DATE

12/10/2007

BY

JNC

DATE

12/10/2007

BY

JNC

DATE

12/10/2007

BY

JNC

DATE

12/10/2007

BY

JNC

DATE

12/10/2007

BY

JNC

DATE

12/10/2007

BY

JNC

DATE

12/10/2007

## BRIAR CHAPEL - MAP 18

### PROPERTY OF CAMERON PROPERTIES LTD & FIVE STAR GROUP LLC

#### SUBDIVISION PLAT

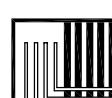
BALDWIN TOWNSHIP, CHATHAM COUNTY, NORTH CAROLINA

SURVEY FOR:

NEWLAND COMMUNITIES  
5850 FAYETTEVILLE ROAD  
SUITE 201  
DURHAM, NORTH CAROLINA 27713

REVISIONS:

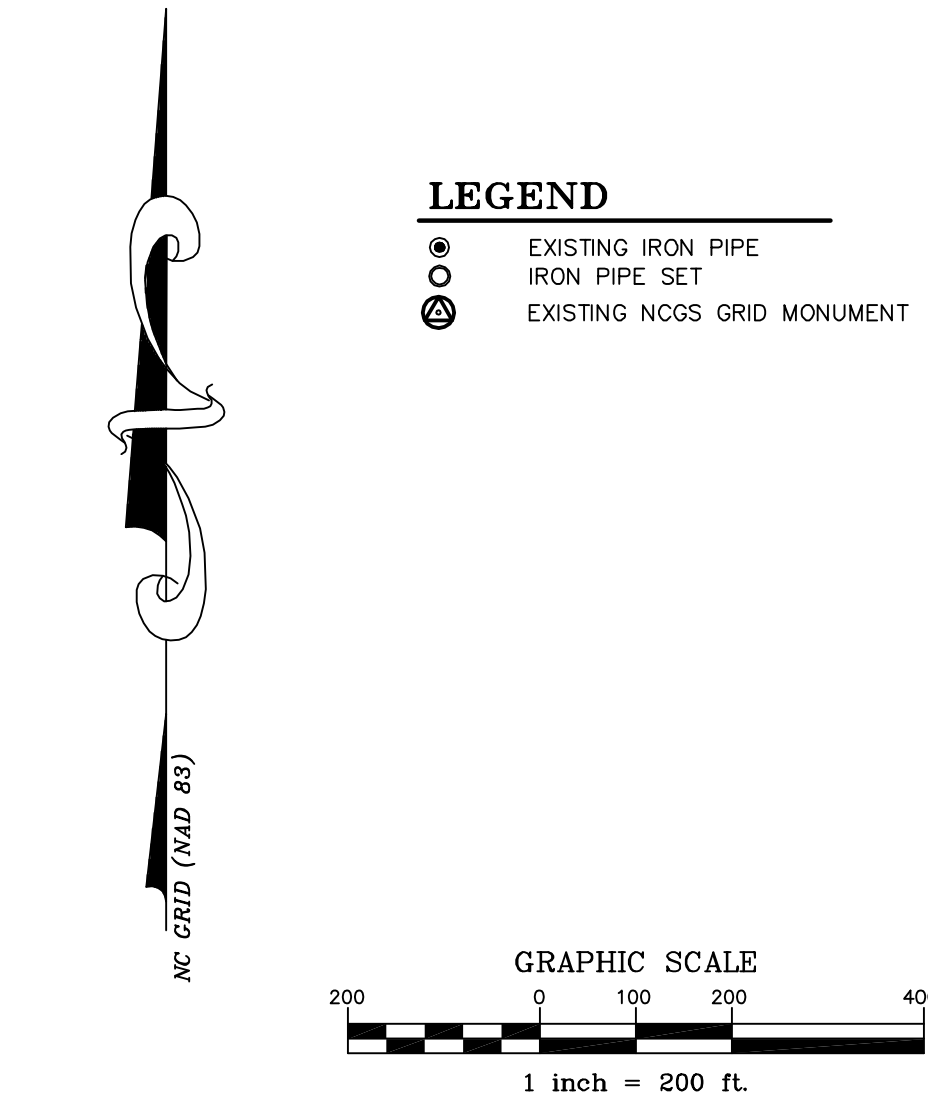
1 -



THE JOHN R. McADAMS  
COMPANY, INC.

ENGINEERS/PLANNERS/SURVEYORS

RESEARCH TRIANGLE PARK, NC  
P.O. BOX 14005 ZIP 27709-4005  
(919) 361-5000



I HEREBY CERTIFY THAT THIS PLAT IS OF THE FOLLOWING TYPE:  
G.S. 47-30 (f)(1)(a). THIS SURVEY CREATES SUBDIVISION OF  
LAND WITHIN THE AREA OF A COUNTY OR MUNICIPALITY THAT  
HAS AN ORDINANCE THAT REGULATES PARCELS OF LAND.

JOSEPH N. GRADY, JR. PLS L-4163

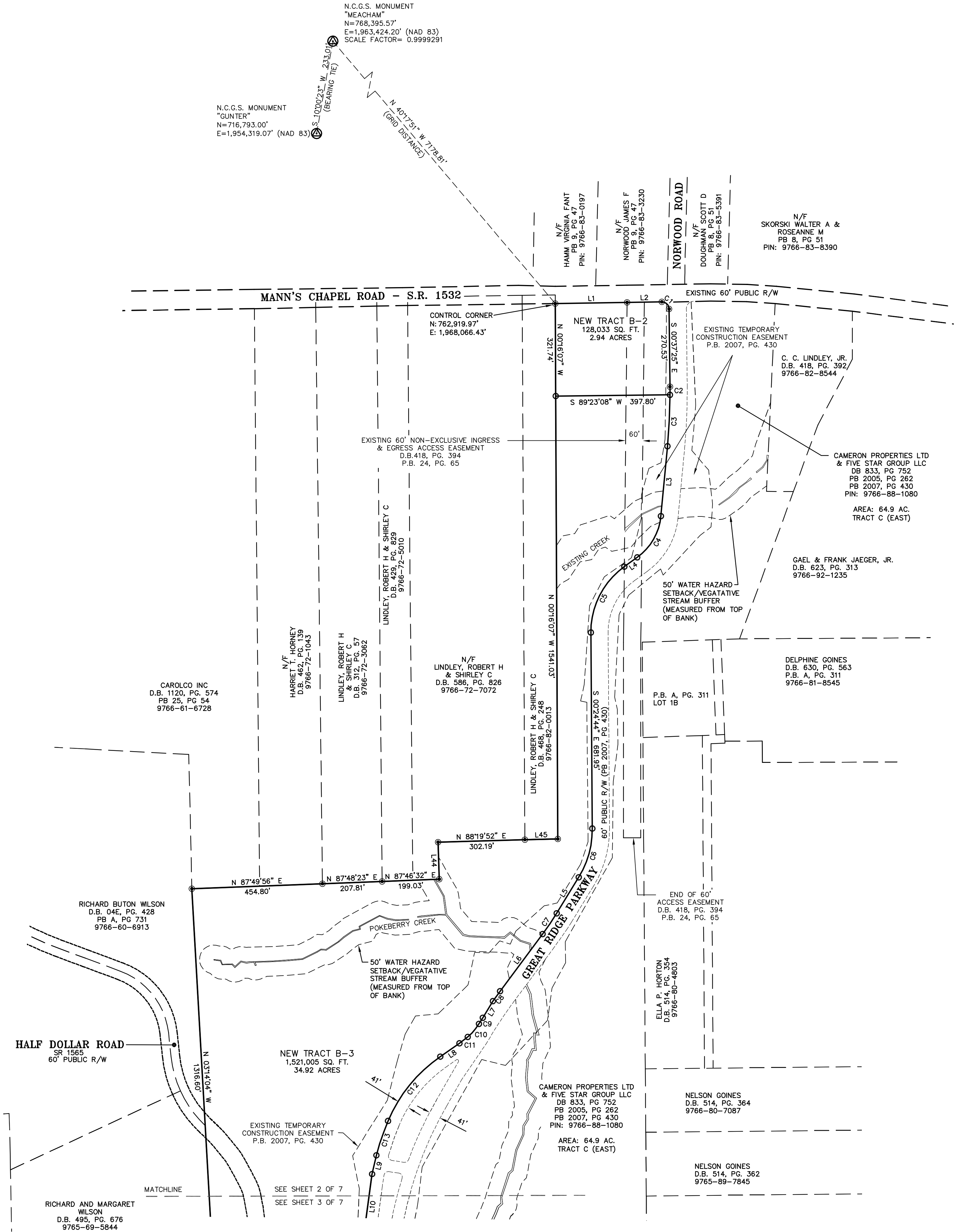
REVIEW OFFICER CERTIFICATION

STATE OF NORTH CAROLINA, COUNTY OF CHATHAM

I, TINA STONE, REVIEW OFFICER FOR CHATHAM COUNTY, CERTIFY THAT THE  
MAP OR PLAT TO WHICH THIS CERTIFICATION IS AFFIXED MEETS ALL  
STATUTORY REQUIREMENTS FOR RECORDING.

TINA STONE, REVIEW OFFICER DATE

BY TITLE:



GENERAL NOTES

1.) SEE SHEET 1 OF 4 FOR GENERAL NOTES AND CERTIFICATES.

LINE TABLE		
LINE	LENGTH	BEARING
L1	249.96'	N 89°03'56" E
L2	120.91'	N 89°02'37" E
L3	244.20'	S 05°24'33" W
L4	55.53'	S 54°14'00" W
L5	146.92'	S 31°31'30" W
L6	247.85'	S 36°39'58" W
L7	67.46'	S 31°16'49" W
L8	80.89'	S 55°13'33" W
L9	67.02'	S 13°03'44" W
L10	185.12'	S 07°44'25" W
L44	129.00'	N 01°49'36" W
L45	114.69'	N 88°52'36" E

CURVE TABLE				
CURVE	RADIUS	LENGTH	CHORD BEARING	CH. DIST.
C1	25.00'	39.42'	S 45°47'24" E	35.46'
C2	1970.00'	28.32'	S 00°12'42" E	28.32'
C3	1970.00'	179.10'	S 02°48'17" W	179.04'
C4	200.00'	170.43'	S 29°49'17" W	165.32'
C5	280.00'	267.05'	S 26°54'38" W	257.04'
C6	320.00'	178.37'	S 15°33'23" W	176.07'
C7	970.00'	87.03'	S 34°05'44" W	87.01'
C8	1548.50'	42.96'	S 35°52'17" W	42.96'
C9	1545.50'	25.20'	S 32°06'48" W	25.20'
C10	190.50'	60.06'	S 40°40'42" W	59.81'
C11	381.50'	36.72'	S 52°28'05" W	36.71'
C12	518.50'	292.23'	S 39°04'47" W	288.38'
C13	868.50'	126.33'	S 18°46'00" W	126.21'

REVISIONS:

SURVEY FOR:  
NEWLAND COMMUNITIES  
5860 FAYETTEVILLE ROAD  
SUITE 201  
DURHAM, NORTH CAROLINA 27713

BRIAR CHAPEL - MAP 18  
PROPERTY OF CAMERON PROPERTIES LTD  
& FIVE STAR GROUP LLC  
SUBDIVISION PLAT

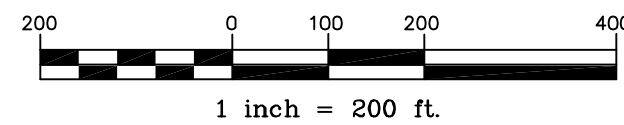
BALDWIN TOWNSHIP, CHATHAM COUNTY, NORTH CAROLINA



### LEGEND

● EXISTING IRON PIPE  
 ○ IRON PIPE SET  
 ■ EXISTING CONCRETE MONUMENT  
 ▲ CALCULATED POINT  
 ● EXISTING NAIL

GRAPHIC SCALE



I HEREBY CERTIFY THAT THIS PLAT IS OF THE FOLLOWING TYPE:  
G.S. 47-30 (f)(11)(a). THIS SURVEY CREATES SUBDIVISION OF  
LAND WITHIN THE AREA OF A COUNTY OR MUNICIPALITY THAT  
HAS AN ORDINANCE THAT REGULATES PARCELS OF LAND.

JOSEPH N. GRADY, JR. PLS L-4163

## REVIEW OFFICER CERTIFICATION

STATE OF NORTH CAROLINA, COUNTY OF CHATHAM

I, TINA STONE, REVIEW OFFICER FOR CHATHAM COUNTY, CERTIFY THAT THE MAP OR PLAT TO WHICH THIS CERTIFICATION IS AFFIXED MEETS ALL STATUTORY REQUIREMENTS FOR RECORDING.

TINA STONE, REVIEW OFFICER \_\_\_\_\_ DATE \_\_\_\_\_

BY \_\_\_\_\_ TITLE: \_\_\_\_\_

WADE ROOK MEACHAM  
ETAL  
D.B. 814, PG. 447  
9765-58-3620

MEACHAM MARVIN  
DB 794, PG 564  
PIN: 9765-58-9492

HALF DOLLAR ROAD  
SR 1565  
60' PUBLIC R/W

DOLLAR I C  
DB 246, PG 339  
PB 98, PG 52  
PIN: 9765-79-029

P-BRIAR CHAPEL, LLC  
DB 1198, PG 510  
PB 2003, PG 111  
PB 2007, PG 430  
PIN: 9765-79-2416

CAMERON PROPERTIES LTD  
& FIVE STAR GROUP LLC  
DB 833, PG 752  
PB 2005, PG 262  
PB 2007, PG 430  
PIN: 9766-88-1080

AREA: 64.9 AC.  
TRACT C (EAST)

NELSON GOINES  
D.B. 514, PG. 362  
9765-89-7845

NELSON GOINES  
D.B. 514, PG. 359  
9765-89-6683

JEFFREY MAYNOR  
D.B. 490, PG. 504  
9765-89-6426

JEFFREY MAYNOR  
D.B. 764, PG. 281  
9765-89-6221

— — — — —

HUBERT OAKLEY  
D.B. 447, PG. 317  
P.B. 25, PG. 9

LINE TABLE		
LINE	LENGTH	BEARING
L9	67.02'	S 130°34'44" W
L10	185.12'	S 07°44'25" W
L11	93.44'	S 85°53'56" E
L12	153.19'	N 88°11'03" E
L13	162.02'	S 85°59'13" E
L14	114.10'	N 72°03'12" E
L15	171.36'	N 02°38'38" E
L16	74.38'	S 34°54'30" S
L17	191.94'	S 31°10'19" E
L18	178.03'	S 37°23'51" E
L19	25.70'	S 31°08'39" E
L20	76.85'	N 90°00'00" W
L21	100.17'	N 89°59'59" W
L22	100.01'	N 55°21'48" W
L23	204.75'	N 03°30'23" E
L24	125.37'	N 88°50'58" W
L25	193.12'	N 78°11'17" W
L26	71.68'	N 06°35'43" W
L27	61.36'	S 37°03'03" W
L28	101.60'	S 50°24'45" W
L29	81.24'	S 42°40'42" W
L30	81.24'	S 27°25'19" W
L31	97.56'	S 18°17'00" W
L32	92.72'	S 88°01'28" E
L33	193.12'	N 78°11'17" E
L34	125.37'	N 88°50'58" E
L35	171.36'	N 02°38'38" E
L36	24.95'	S 88°49'41" E

CURVE TABLE				
CURVE	RADIUS	LENGTH	CHORD BEARING	CH. DIST.
C14	2000.00'	115.15'	S 06°05'27" E	115.14'
C15	518.50'	43.12'	S 23°31'33" W	43.11'
C16	300.00'	19.56'	S 33°02'24" E	19.56'
C17	725.00'	78.78'	S 71°05'07" E	78.78'
C18	211.71'	8.63'	N 29°36'58" E	8.63'
C19	1750.00'	141.95'	N 0°43'52" W	141.91'
C20	1550.00'	229.33'	S 00°34'56" W	229.12'
C21	450.00'	101.34'	S 02°56'42" W	101.13'
C22	950.00'	204.40'	N 82°17'07" W	204.01'
C23	350.00'	89.38'	S 81°54'38" E	84.44'
C24	1050.00'	122.17'	S 47°44'38" E	122.01'
C25	350.00'	64.17'	S 31°48'01" E	64.08'
C26	226.00'	49.83'	S 04°20'28" E	49.73'
C37	950.00'	168.34'	N 46°00'03" E	168.12'
C38	890.00'	78.24'	N 77°26'40" E	75.50'
C39	850.00'	101.82'	N 72°00'00" E	101.82'
C40	890.00'	348.42'	N 82°03'36" E	346.25'

## GENERAL NOTES

1.) SEE SHEET 1 OF 4 FOR GENERAL NOTES AND CERTIFICATES.

TC&I TIMBER COMPANY LLC  
DB 1293. PG 483  
PIN: 9765-47-2252

NNP-BRIAR CHAPEL, LLC  
DB 1198, PG 510  
PB 2005, PG 262  
PB 2007, PG 430  
PIN: 9765-85-9556  
TRACT 3

NEW TRACT B-4  
4,737,268 SQ. FT.  
108.75 ACRES

NRP-BRIAR CHAPEL LLC.  
TRACT 1  
PB 2007, PG 400 —

BRIAR CHAPEL SUBDIVISION  
PHASE 4, SECTION 2  
(PB 2007, PG 464)

RIAR CHAPEL SUBDIVISION  
PHASE 3 & 4  
(PB 2007 PG 430)

BRIAR CHAPEL PARKWAY

BRIAR CHAPEL SUBDIVISION  
PHASE 4, SECTION 2  
(PB 2007, PG 464)

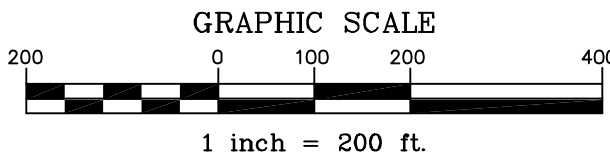
**REVISIONS:**

**SURVEY FOR:**



LEGEND

- EXISTING IRON PIPE
- IRON PIPE SET
- EXISTING CONCRETE MONUMENT
- CALCULATED POINT
- EXISTING NAIL



TC&I TIMBER COMPANY LLC  
DB 1293, PG 483  
PIN: 9765-47-2252

NEW TRACT B-4  
4,737,268 SQ. FT.  
108.75 ACRES

NRP-BRIAR CHAPEL LLC.  
TRACT 1  
PB 2007, PG 400

BRIAR CHAPEL SUBDIVISION  
PHASE 4, SECTION 2  
(PB 2007, PG 464)

BRIAR CHAPEL SUBDIVISION  
PHASE 3 & 4  
(PB 2007, PG 430)  
(PB 2007, PG 464)

LINE	LENGTH	BEARING
L21	108.97'	S 19°57'26" W
L22	100.01'	S 55°24'18" W
L23	204.75'	S 03°30'23" E
L24	125.37'	N 88°30'58" W
L25	193.12'	N 76°11'17" W
L27	61.35'	S 37°03'10" E
L28	104.80'	N 50°32'45" E
L29	81.24'	S 42°40'42" W
L30	81.24'	S 27°25'19" W
L31	92.56'	S 18°17'00" W
L32	92.72'	S 88°01'28" E
L33	72.89'	N 78°00'43" E
L34	60.91'	S 25°20'12" E
L35	180.76'	N 29°10'10" W
L36	100.10'	S 31°24'17" W
L37	89.99'	S 80°39'18" W
L38	182.01'	N 54°34'51" W
L39	99.11'	S 12°16'27" E
L40	157.93'	S 51°10'28" E
L41	193.12'	N 76°11'17" W
L42	125.37'	N 88°30'58" W
L43	171.90'	N 88°30'58" W
L47	40.79'	S 31°24'17" W
L48	93.48'	N 54°52'24" W
L49	145.15'	N 40°55'28" E

CURVE	RADIUS	LENGTH	CHORD BEARING	CH. DIST.
C19	1750.00'	141.95'	N 76°31'22" W	141.91'
C20	1550.00'	229.33'	S 00°43'56" W	229.12'
C21	450.00'	101.34'	S 02°56'42" W	101.13'
C22	950.00'	204.40'	N 82°21'07" W	204.01'
C23	950.00'	874.36'	S 77°26'40" W	843.84'
C24	1050.00'	122.17'	S 47°44'38" W	122.10'
C25	350.00'	64.17'	S 31°48'01" E	64.08'
C26	226.00'	49.83'	S 04°20'28" E	49.73'
C27	950.00'	431.81'	S 44°25'35" W	428.10'
C28	650.00'	263.28'	S 69°03'05" W	261.48'
C29	500.00'	371.09'	S 59°23'35" W	362.63'
C30	280.00'	227.15'	N 31°20'58" W	220.97'
C31	280.00'	190.10'	N 31°43'28" W	186.47'
C32	550.00'	94.31'	N 56°05'12" W	94.19'
C33	450.00'	161.81'	N 50°41'52" W	160.94'
C34	550.00'	103.46'	N 45°47'08" W	103.31'
C35	1250.00'	107.00'	N 24°45'46" E	106.97'
C36	852.60'	309.48'	N 31°37'03" E	308.12'
C37	950.00'	168.34'	N 46°00'03" E	168.12'
C38	850.00'	782.34'	N 77°26'40" E	755.01'
C39	1050.00'	225.92'	S 82°21'07" E	225.49'
C40	900.00'	348.42'	N 80°23'36" E	346.25'

I HEREBY CERTIFY THAT THIS PLAT IS OF THE FOLLOWING TYPE:  
G.S. 47-30 (f)(11)(c). THIS SURVEY CREATES SUBDIVISION OF  
LAND WITHIN THE AREA OF A COUNTY OR MUNICIPALITY THAT  
HAS AN ORDINANCE THAT REGULATES PARCELS OF LAND.

JOSEPH N. GRADY, JR. PLS L-4163

REVIEW OFFICER CERTIFICATION

STATE OF NORTH CAROLINA, COUNTY OF CHATHAM

I, TINA STONE, REVIEW OFFICER FOR CHATHAM COUNTY, CERTIFY THAT THE  
MAP OR PLAT TO WHICH THIS CERTIFICATION IS AFFIXED MEETS ALL  
STATUTORY REQUIREMENTS FOR RECORDING.

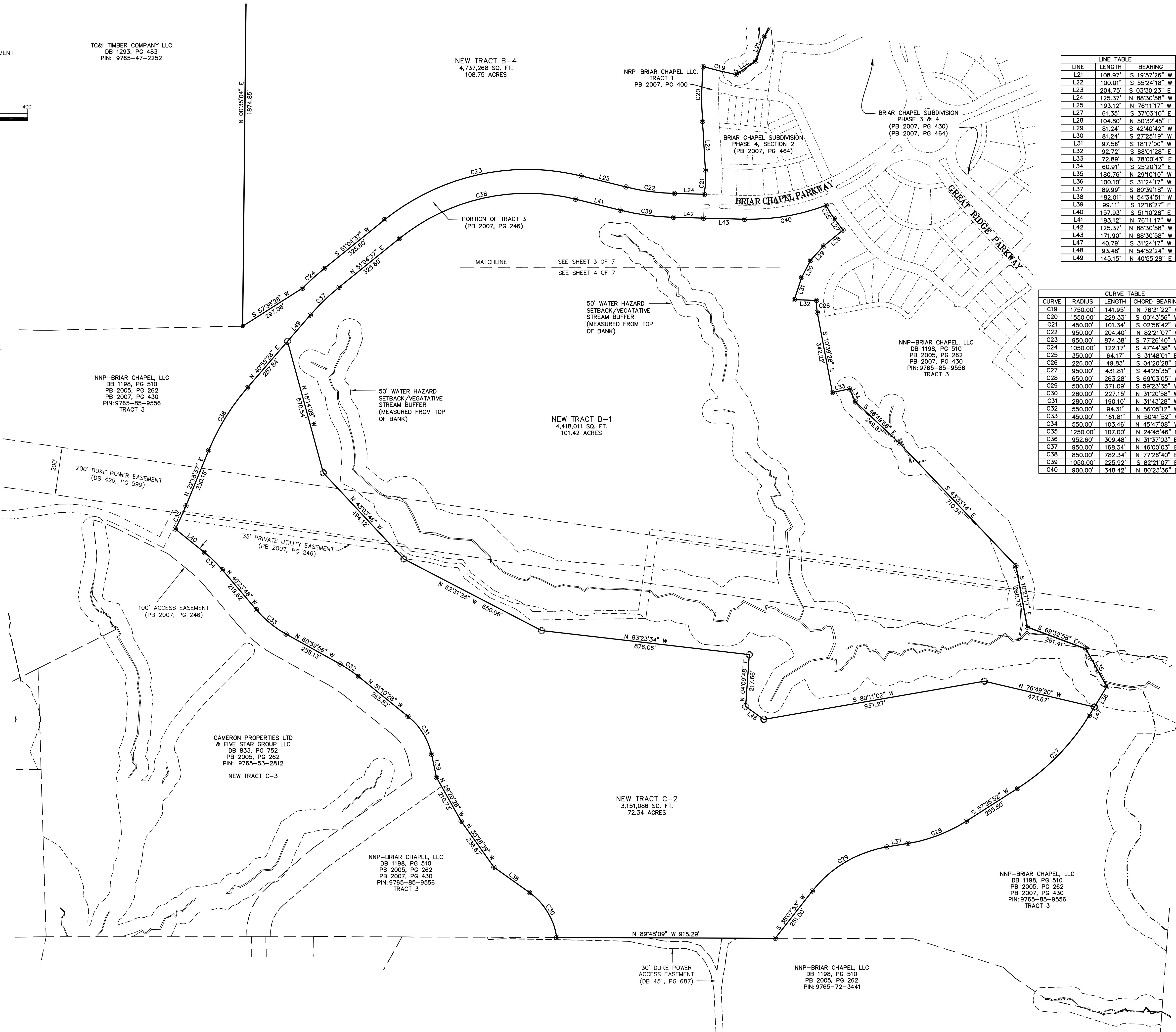
TINA STONE, REVIEW OFFICER DATE

BY TITLE:

NNP-BRIAR CHAPEL, LLC  
DB 1198, PG 510  
PB 2005, PG 262  
PB 2007, PG 430  
PIN: 9765-85-9556  
TRACT 3

NEW TRACT B-1  
4,418,011 SQ. FT.  
101.42 ACRES

NNP-BRIAR CHAPEL, LLC  
DB 1198, PG 510  
PB 2005, PG 262  
PB 2007, PG 430  
PIN: 9765-85-9556  
TRACT 3



GENERAL NOTES

1.) SEE SHEET 1 OF 4 FOR GENERAL NOTES AND CERTIFICATES.

THE JOHN R. McADAMS  
COMPANY, INC.  
ENGINEERS/PLANNERS/SURVEYORS  
RESEARCH TRIANGLE PARK, NC  
P.O. BOX 14005 ZIP 27709-4005  
(919) 361-5000

REVISIONS:

SURVEY FOR:

NEWLAND COMMUNITIES  
5860 FAYETTEVILLE ROAD  
SUITE 201  
DURHAM, NORTH CAROLINA 27713

BRIAR CHAPEL - MAP 18  
PROPERTY OF CAMERON PROPERTIES LTD  
& FIVE STAR GROUP LLC  
SUBDIVISION PLAT

BALDWIN TOWNSHIP, CHATHAM COUNTY, NORTH CAROLINA

PROJECT NO. NEW-05000  
FILENAME: NEW-05000-F18  
SURVEYOR: JNG  
DRAWN BY: EMM  
SCALE: 1"=200'  
DATE: 12/10/2007  
SHEET NO. 4-4

McADAMS

