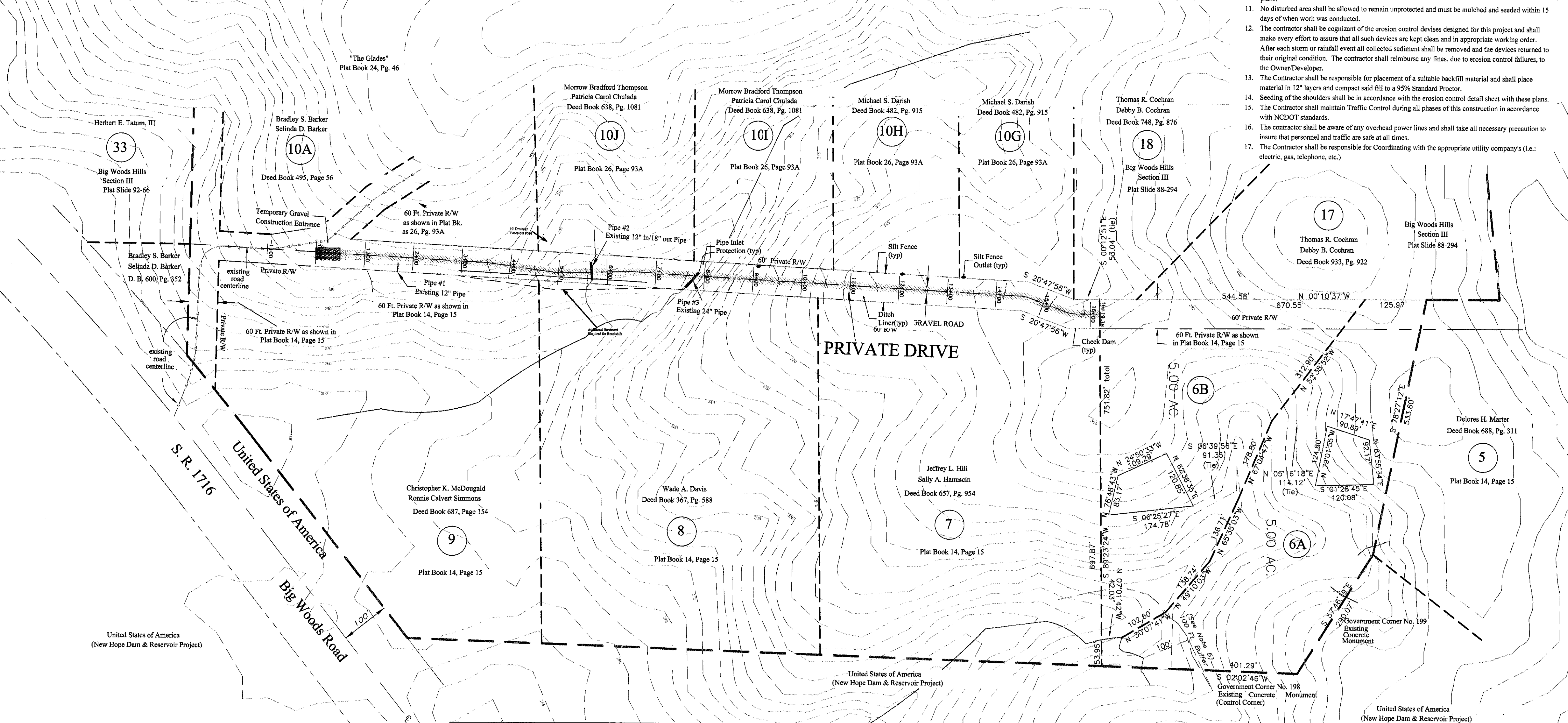


OWNER: JOSEPH RICKY BEAL AND DEBORAH K. BEAL  
 GOLDSTON, N. C. 27252  
 WILLIAMS TOWNSHIP CHATHAM COUNTY, N. C.  
 DATE: JANUARY 14, 2008

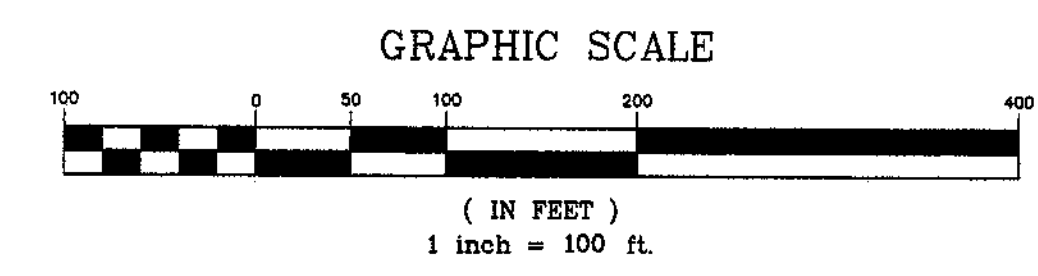
**General Notes:**

- Boundary survey and topographic information taken from surveys provided by: Van R Finch Land Surveyors P.A. 109 Hillsboro Street Pittsboro, NC 27312.
- The Engineer is: John W. Harris, P.E. Consulting Engineer, Inc., 5112 Bur Oak Circle, Raleigh, N.C. 27612.
- The total area of disturbance has been determined to be +/- 2.26 acres.
- No flood hazard areas were located in the area of this construction and it is determined that none exist in conflict with this construction. Wetland conditions have been noted on the plans.
- The Contractor shall be responsible for obtaining all Local, County and State permits.
- The Contractor shall verify the location of all existing utilities prior to beginning any work on the site.
- Temporary diversion ditches shall be installed along the sides of the clearing area until such time as the typical roadway section can be established.
- Any changes or deviations from these plans, no matter how minor, shall be done only with the express pre-approval of the project engineer, Mr. John W. Harris.
- Work within the NCDOT R/W shall conform to NCDOT standards and specification.
- All erosion control work and materials shall conform to the standards and specifications of these plans.
- No disturbed area shall be allowed to remain unprotected and must be mulched and seeded within 15 days of when work was conducted.
- The contractor shall be cognizant of the erosion control devices designed for this project and shall make every effort to assure that all such devices are kept clean and in appropriate working order. After each storm or rainfall event all collected sediment shall be removed and the devices returned to their original condition. The contractor shall reimburse any fines, due to erosion control failures, to the Owner/Developer.
- The Contractor shall be responsible for placement of a suitable backfill material and shall place material in 12" layers and compact said fill to a 95% Standard Proctor.
- Seeding of the shoulders shall be in accordance with the erosion control detail sheet with these plans.
- The Contractor shall maintain Traffic Control during all phases of this construction in accordance with NCDOT standards.
- The contractor shall be aware of any overhead power lines and shall take all necessary precaution to insure that personnel and traffic are safe at all times.
- The Contractor shall be responsible for Coordinating with the appropriate utility company's (i.e.: electric, gas, telephone, etc.)



**John W. Harris, P.E.**  
 Consulting Engineer, Inc.  
 5112 Bur Oak Circle  
 Raleigh, N.C. 27612  
 (919) 789-0744

Date: April 22, 2008  
 Scale: 1" = 100'  
 Drawn By: CES  
 Job #: 87-0108  
 File: Ricky/Beal/working.dwg  
 Revision:

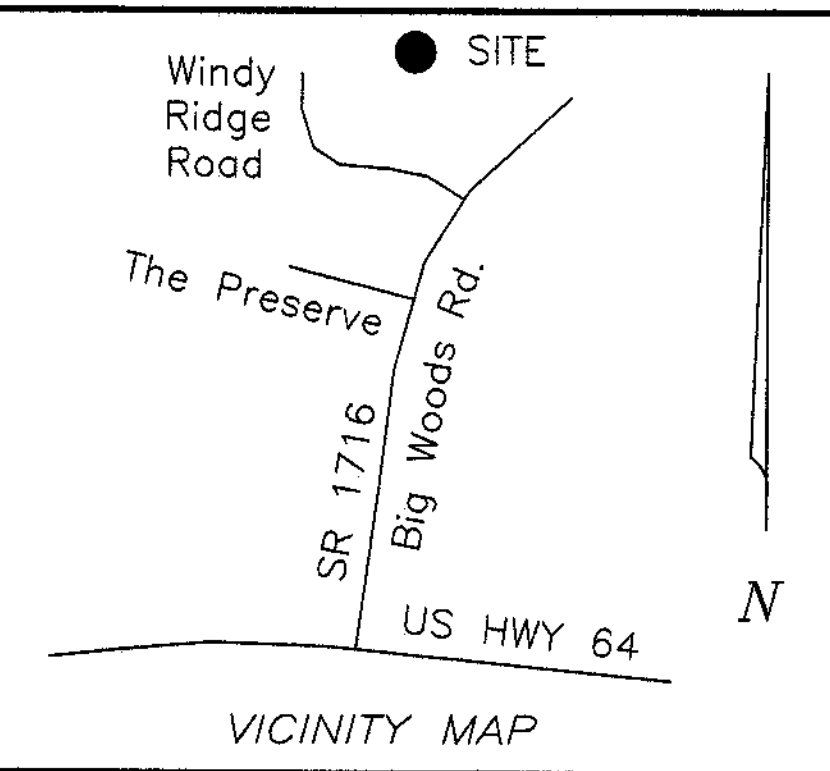


**SHEET INDEX**

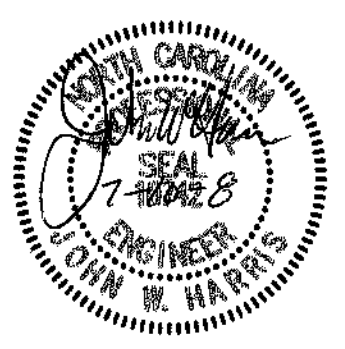
COVER SHEET.....	1
DRAINAGE DELINEATION PLAN.....	2
EROSION & SEDIMENTATION CONTROL PLAN.....	3
PLAN AND PROFILE STA 0+00 - 13+00.....	4
PLAN AND PROFILE STA 13+00 - EOP.....	5
DETAILS.....	6
DETAILS.....	7
DETAILS.....	8

**Cover Sheet**  
 For  
**Ricky Beal Subdivision**



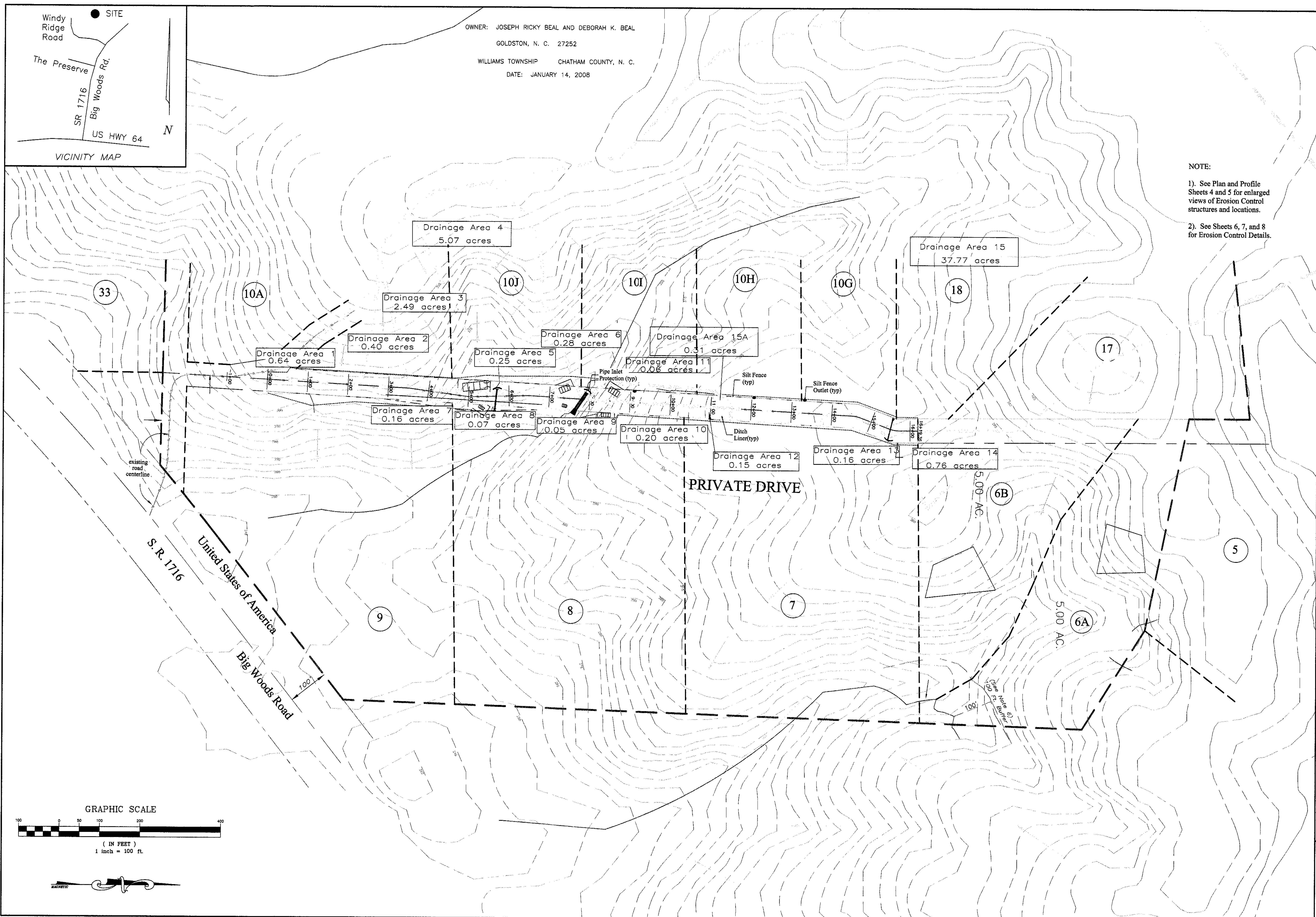


OWNER: JOSEPH RICKY BEAL AND DEBORAH K. BEAL  
 GOLDSTON, N. C. 27252  
 WILLIAMS TOWNSHIP CHATHAM COUNTY, N. C.  
 DATE: JANUARY 14, 2008



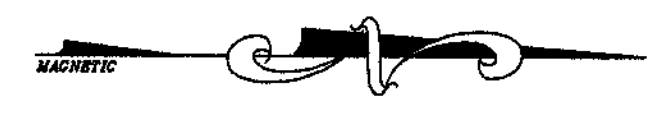
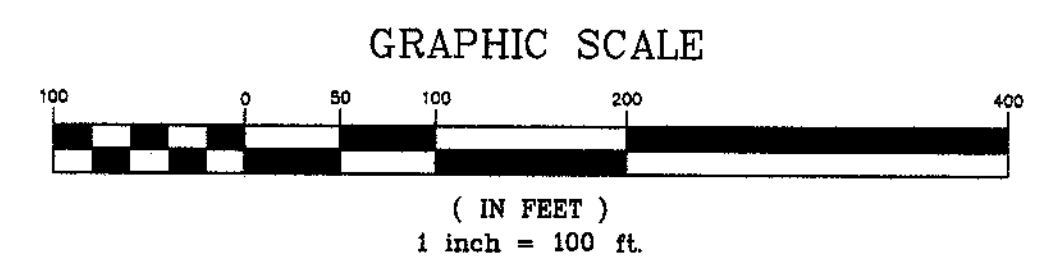
**John W. Harris, P.E.**  
 Consulting Engineer, Inc.  
 5112 Bur Oak Circle  
 Raleigh, N.C. 27612  
 (919) 789-0744

NOTE:  
 1). See Plan and Profile Sheets 4 and 5 for enlarged views of Erosion Control structures and locations.  
 2). See Sheets 6, 7, and 8 for Erosion Control Details.

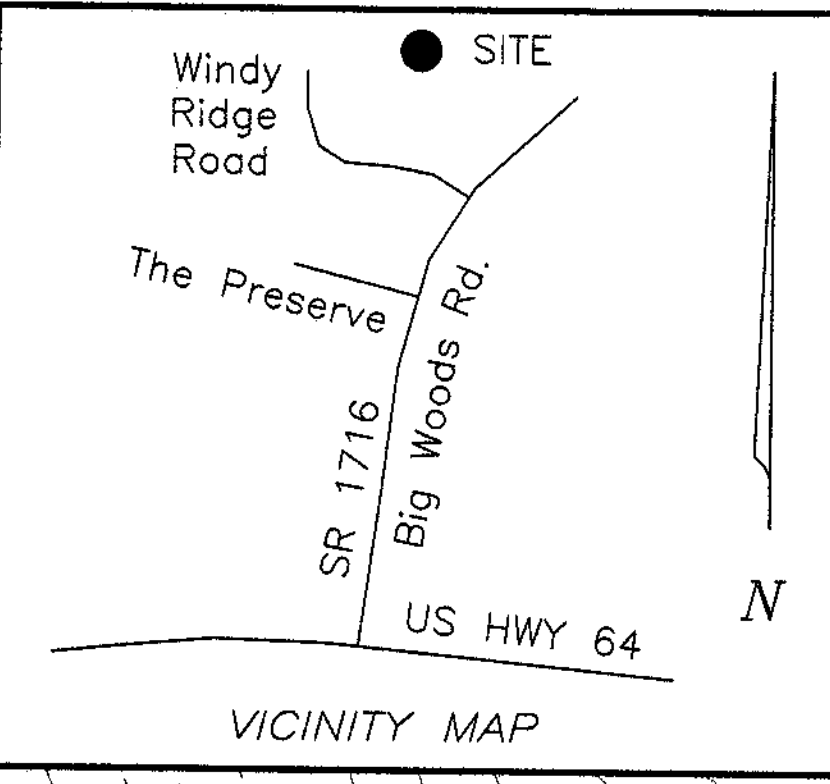


Date: April 22, 2008  
 Scale: 1" = 100'  
 Drawn By: CES  
 Job #: 87-0108  
 File: RickyBealWorking.dwg  
 Revision:

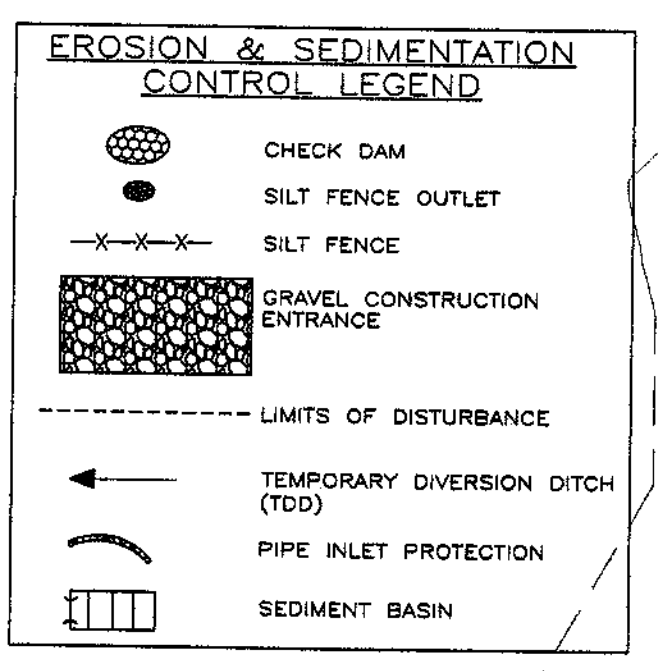
**Drainage Delineation Plan**  
 For  
**Ricky Beal Subdivision**



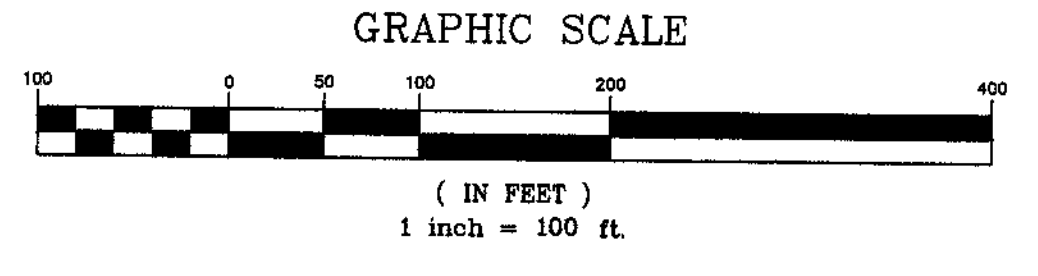
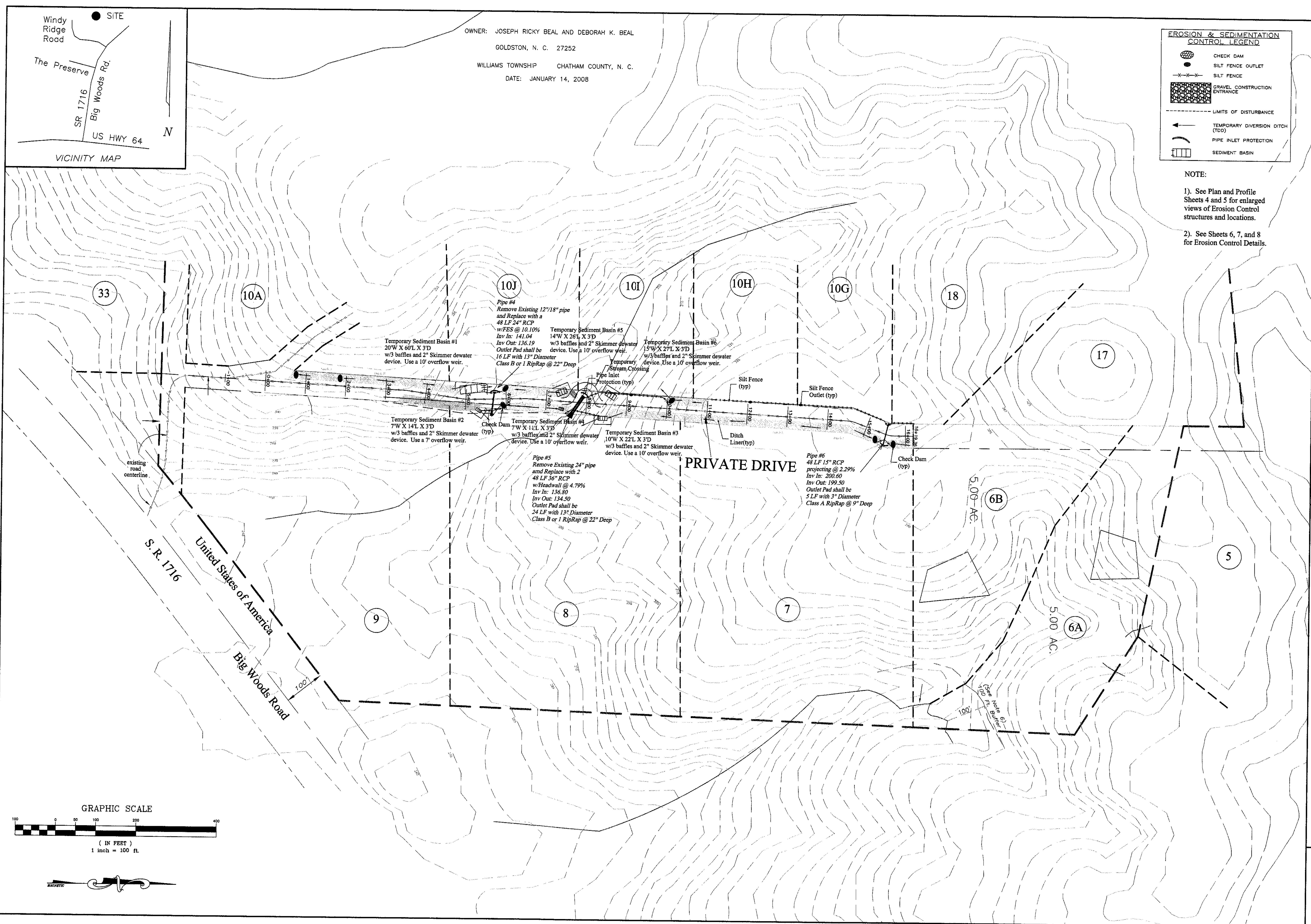




OWNER: JOSEPH RICKY BEAL AND DEBORAH K. BEAL  
 GOLDSTON, N. C. 27252  
 WILLIAMS TOWNSHIP CHATHAM COUNTY, N. C.  
 DATE: JANUARY 14, 2008



NOTE:  
 1). See Plan and Profile Sheets 4 and 5 for enlarged views of Erosion Control structures and locations.  
 2). See Sheets 6, 7, and 8 for Erosion Control Details.

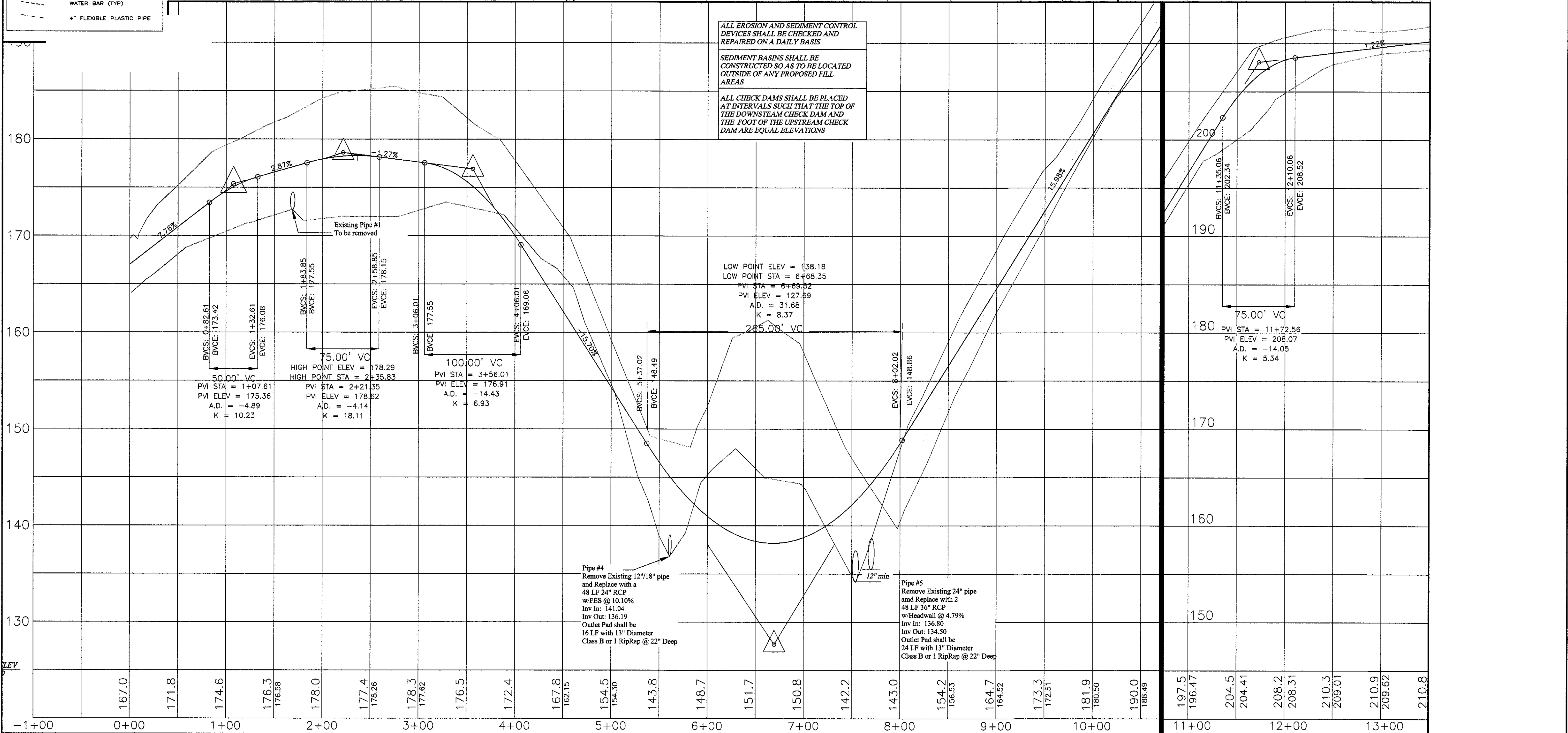
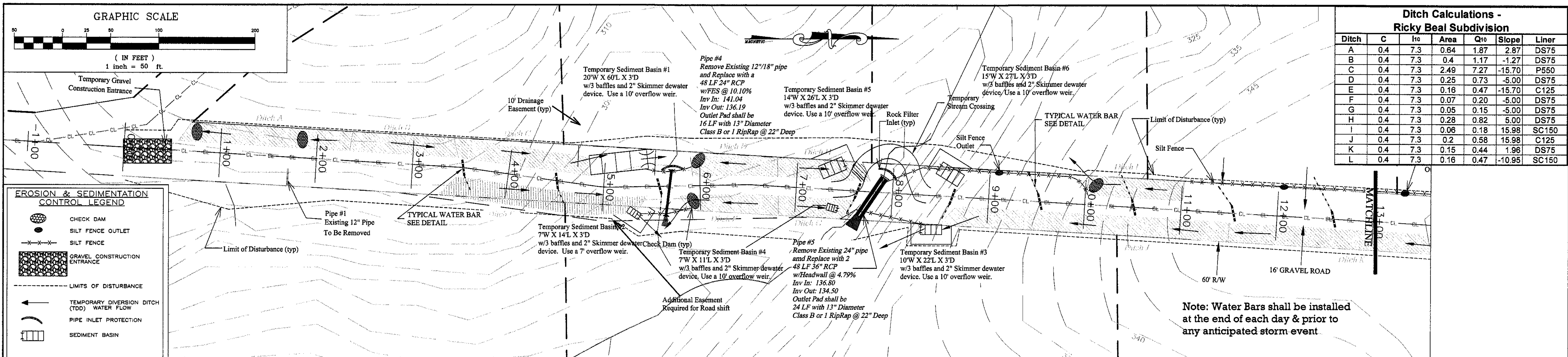


**John W. Harris, P.E.**  
 Consulting Engineer, Inc.  
 5112 Bur Oak Circle  
 Raleigh, N.C. 27612  
 (919) 789-0744

Date: April 22, 2008  
 Scale: 1" = 100'  
 Drawn By: CES  
 Job #: 87-0108  
 File: RickyBealWorking.dwg  
 Revision:

Erosion & Sedimentation Control Plan  
 For  
**Ricky Beal Subdivision**



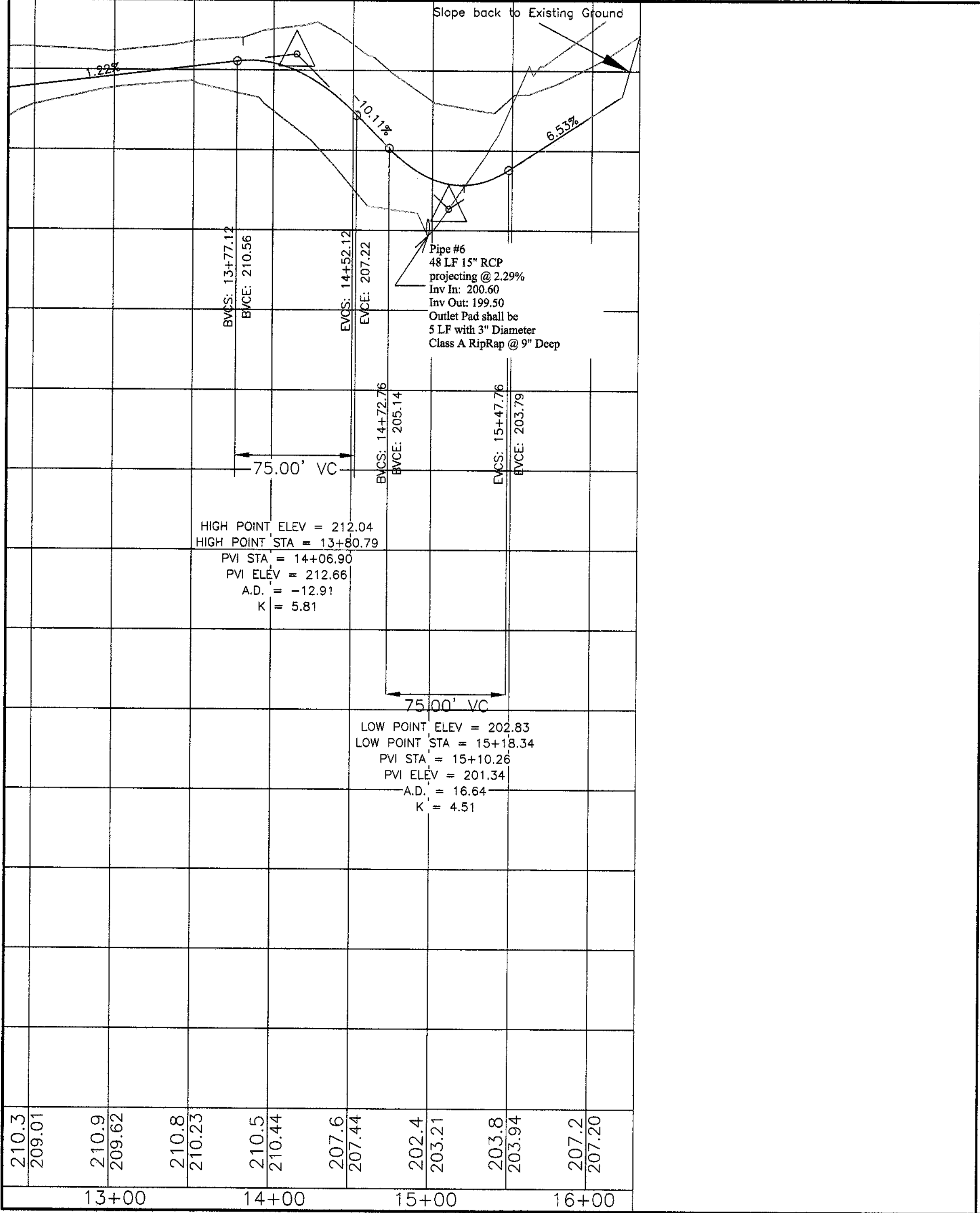
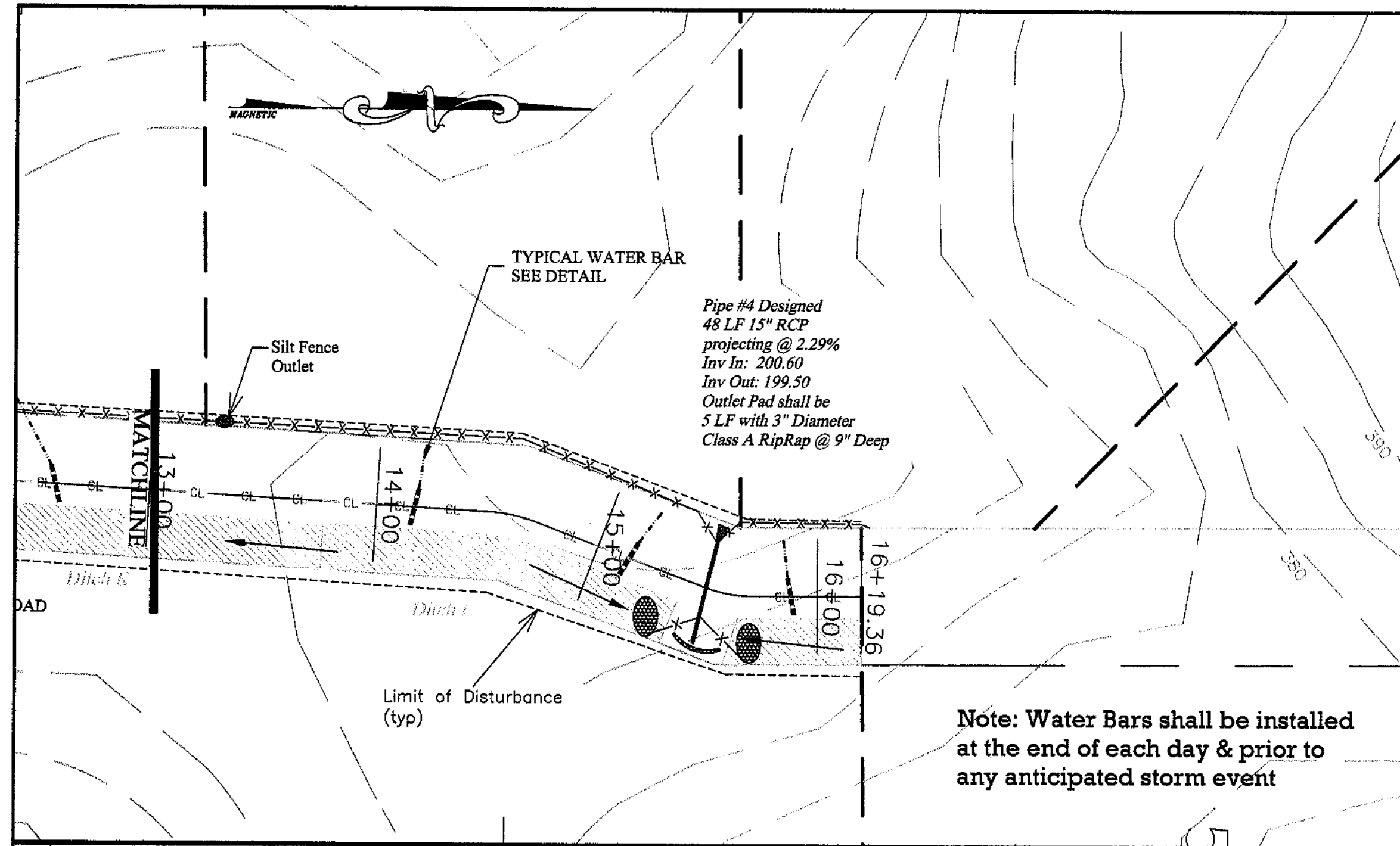


**John W. Harris, P.E.**  
Consulting Engineer, Inc.  
5112 Bur Oak Circle  
Raleigh, N.C. 27612  
(919) 789-0744

**Plan & Profile Sta. 0+00 - 13+00**  
For  
**Ricky Beal Subdivision**

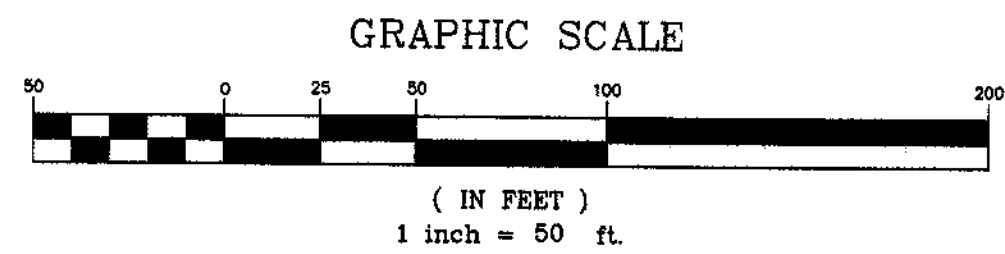
Date: April 22, 2008  
Scale: 1" = 50'  
Drawn By: CES  
Job #: 87-0108  
File: RickyBeal Working.dwg  
Revision:





**Ditch Calculations - Ricky Beal Subdivision**

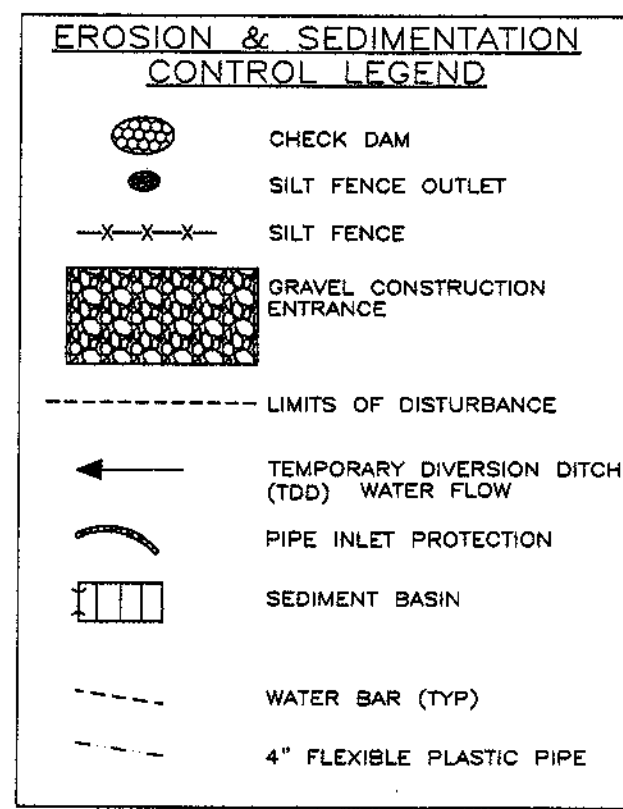
Ditch	C	I <sub>0</sub>	Area	Q <sub>10</sub>	Slope	Liner
A	0.4	7.3	0.64	1.87	2.87	DS75
B	0.4	7.3	0.4	1.17	-1.27	DS75
C	0.4	7.3	2.49	7.27	-15.70	P560
D	0.4	7.3	0.25	0.73	-5.00	DS75
E	0.4	7.3	0.16	0.47	-15.70	C125
F	0.4	7.3	0.07	0.20	-5.00	DS75
G	0.4	7.3	0.05	0.15	-5.00	DS75
H	0.4	7.3	0.28	0.82	5.00	DS75
I	0.4	7.3	0.06	0.18	15.98	SC150
J	0.4	7.3	0.2	0.68	15.98	C125
K	0.4	7.3	0.15	0.44	1.96	DS75
L	0.4	7.3	0.16	0.47	-10.95	SC150



ALL EROSION AND SEDIMENT CONTROL DEVICES SHALL BE CHECKED AND REPAIRED ON A DAILY BASIS

SEDIMENT BASINS SHALL BE CONSTRUCTED SO AS TO BE LOCATED OUTSIDE OF ANY PROPOSED FILL AREAS

ALL CHECK DAMS SHALL BE PLACED AT INTERVALS SUCH THAT THE TOP OF THE DOWNSTREAM CHECK DAM AND THE FOOT OF THE UPSTREAM CHECK DAM ARE EQUAL ELEVATIONS



**John W. Harris, P.E.**  
Consulting Engineer, Inc.  
5112 Bur Oak Circle  
Raleigh, N.C. 27612  
(919) 789-0744

Date: April 22, 2008  
Scale: 1" = 50'  
Drawn By: CFS  
Job #: 87-0108  
File: RickyBealWorking.dwg  
Revision:

**Plan & Profile Sta. 13+00 - EOP**  
For  
**Ricky Beal Subdivision**

