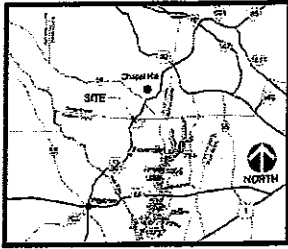


Kerth's copy
2/16/09

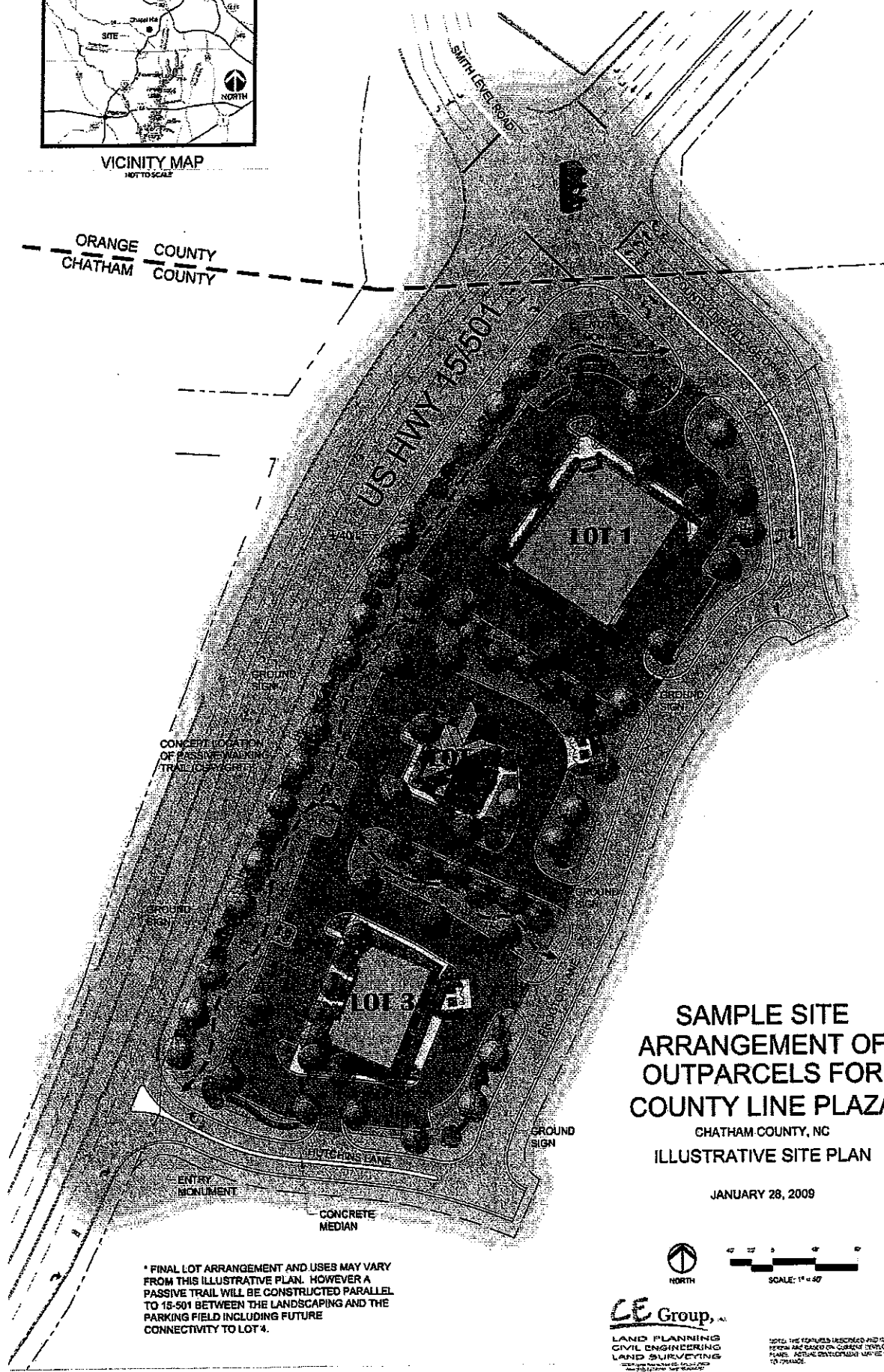
Lee-Moore Capital Company County Line Site
Additional Condition to Incorporate Appearance Commission Recommendations

Prior to issuance of a certificate of occupancy for improvements on any lot shown on the plat, the applicant or its successors shall install on that lot a passive walking trail composed of Chapel Hill grit or similar material between the parking field on the lot and the landscaping near the U.S. Highway 15-501 right of way, in the approximate locations shown on the attached Sample Site Arrangement rendering. Also prior to the issuance of a certificate of occupancy for improvements on any lot shown on the plat, the applicant or its successors will also seek opportunities to replace some of the proposed turf grass areas on the lot with ground cover plantings that would be viable in those areas, will replace the proposed plantings of *Berberis thunbergii* with a dwarf form of *Loropetalum chinense* and will replace some of the proposed dwarf holly with mid-size evergreen shrubs in the plantings along the U.S. Highway 15-501 right of way.



VICINITY MAP
NOT TO SCALE

ORANGE COUNTY
CHATHAM COUNTY



**SAMPLE SITE
ARRANGEMENT OF
OUTPARCELS FOR
COUNTY LINE PLAZA**

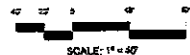
CHATHAM COUNTY, NC
ILLUSTRATIVE SITE PLAN

JANUARY 28, 2009

* FINAL LOT ARRANGEMENT AND USES MAY VARY FROM THIS ILLUSTRATIVE PLAN. HOWEVER A PASSIVE TRAIL WILL BE CONSTRUCTED PARALLEL TO 15-501 BETWEEN THE LANDSCAPING AND THE PARKING FIELD INCLUDING FUTURE CONNECTIVITY TO LOT 4.



NORTH



SCALE: 1" = 40'

CE Group, Inc.
LAND PLANNING
CIVIL ENGINEERING
LAND SURVEYING
INCORPORATED IN NORTH CAROLINA

NOTE: THE FEATURES DESCRIBED AND SHOWN HEREON ARE BASED ON CURRENT DEVELOPMENT PLANS. ACTUAL DEVELOPMENT MAY BE SUBJECT TO CHANGE.