

STATE OF NORTH CAROLINA
 WAKE COUNTY
 I, RUSSELL K. ELINGBURG, CERTIFY THAT THIS MAP WAS DRAWN UNDER MY SUPERVISION FROM AN ACTUAL SURVEY MADE BY ME (OR UNDER MY DIRECT SUPERVISION) THAT THE RATIO OF PRECISION AS CALCULATED BY LATITUDES AND DEPARTURES IS 1/10,000.000. THAT THE BOUNDARIES AND DEPARTURES ARE SHOWN AS BROKEN LINES DRAWN FROM INFORMATION FOUND IN BOOK _____ PAGE _____ THAT THIS MAP WAS PREPARED IN ACCORDANCE WITH G.S. 47-30 AS AMENDED.
 WITNESS MY HAND AND SEAL THIS 30th DAY OF JANUARY, 2004.
 Russell K. Elingburg P.L.S. 3414 (N.C.)



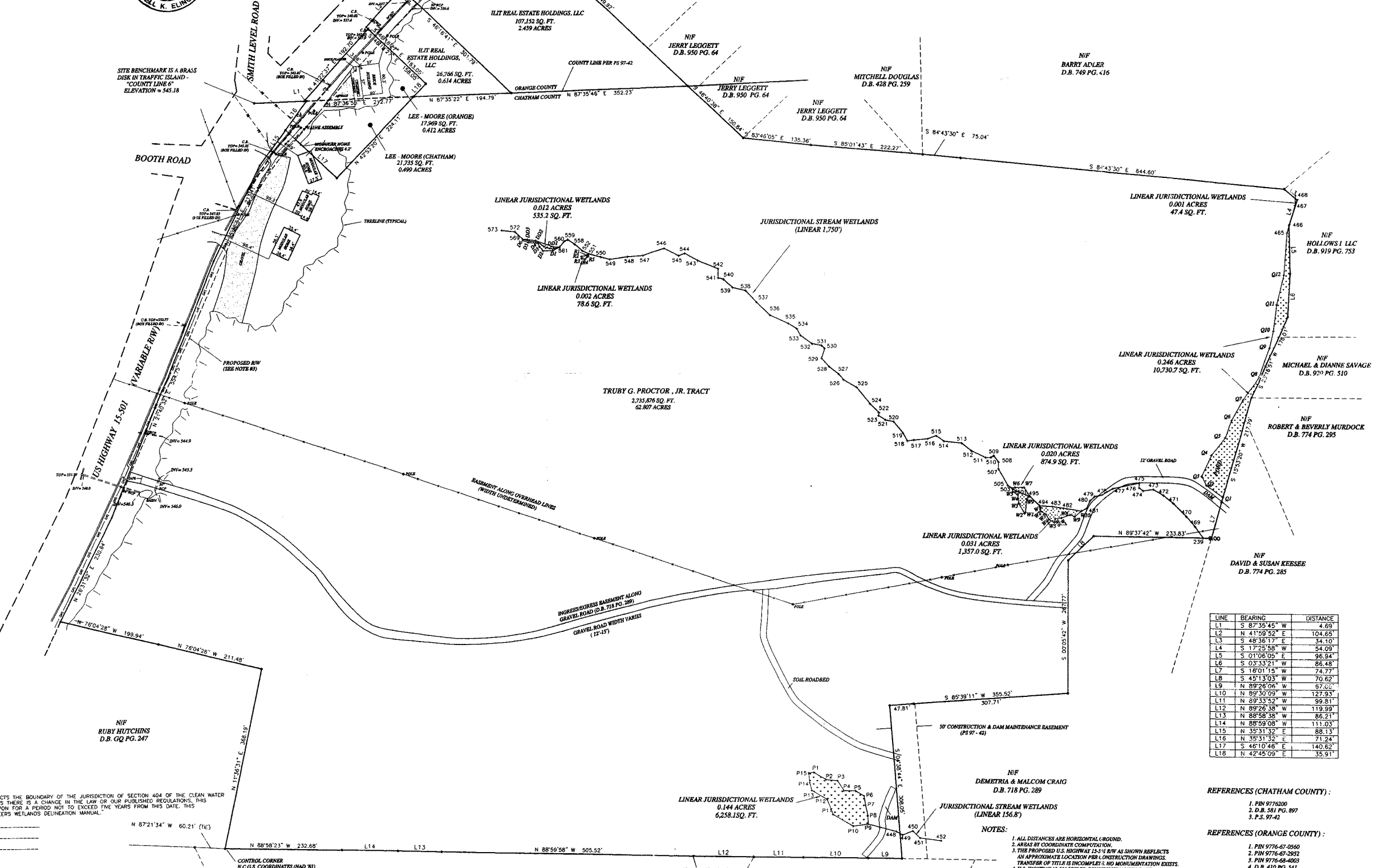
- LEGEND:
- OE OVERHEAD ELECTRIC
 - OT OVERHEAD TELEPHONE
 - RCP REINFORCED CONCRETE PIPE
 - NIF NOWFORMERLY
 - EXISTING IRON PIPE
 - NEW IRON PIPE
 - COMPUTED POINT

I, RUSSELL K. ELINGBURG, REGISTERED LAND SURVEYOR NO. L-3414, CERTIFY TO ONE OR MORE OF THE FOLLOWING AS INDICATED THIS, B OR C:

- A. THAT THIS PLAT IS OF A SURVEY THAT CREATES A SUBDIVISION OF LAND WITHIN THE AREA OF A COUNTY OR MUNICIPALITY THAT HAS AN ORDINANCE THAT REGULATES PARCELS OF LAND.
- B. THAT THIS PLAT IS OF A SURVEY THAT IS LOCATED IN SUCH PORTION OF A COUNTY OR MUNICIPALITY THAT IS UNREGULATED AS TO AN ORDINANCE THAT REGULATES PARCELS OF LAND.
- C. THAT THIS PLAT IS OF A SURVEY OF AN EXISTING PARCEL OR PARCELS OF LAND.
- D. THAT THIS PLAT IS OF ANOTHER CATEGORY, SUCH AS THE RECOMBINATION OF EXISTING PARCELS, A COURT-ORDERED SURVEY OR OTHER EXCEPTION TO THE DEFINITION OF SUBDIVISION.
- E. THAT THE INFORMATION AVAILABLE TO THIS SURVEYOR IS SUCH THAT I AM UNABLE TO MAKE A DETERMINATION TO THE BEST OF MY PROFESSIONAL ABILITY AS TO WHETHER THE INFORMATION CONTAINED IN (A) THROUGH (D) ABOVE.

Russell K. Elingburg P.L.S. (L-3414)

- Point: (Northing) Easting
- P10 19732.24 197794.49
- P11 19732.24 197794.49
- P12 19732.24 197794.49
- P13 19732.24 197794.49
- P14 19732.24 197794.49
- P15 19732.24 197794.49
- P16 19732.24 197794.49
- P17 19732.24 197794.49
- P18 19732.24 197794.49
- P19 19732.24 197794.49
- P20 19732.24 197794.49
- P21 19732.24 197794.49
- P22 19732.24 197794.49
- P23 19732.24 197794.49
- P24 19732.24 197794.49
- P25 19732.24 197794.49
- P26 19732.24 197794.49
- P27 19732.24 197794.49
- P28 19732.24 197794.49
- P29 19732.24 197794.49
- P30 19732.24 197794.49
- P31 19732.24 197794.49
- P32 19732.24 197794.49
- P33 19732.24 197794.49
- P34 19732.24 197794.49
- P35 19732.24 197794.49
- P36 19732.24 197794.49
- P37 19732.24 197794.49
- P38 19732.24 197794.49
- P39 19732.24 197794.49
- P40 19732.24 197794.49
- P41 19732.24 197794.49
- P42 19732.24 197794.49
- P43 19732.24 197794.49
- P44 19732.24 197794.49
- P45 19732.24 197794.49
- P46 19732.24 197794.49
- P47 19732.24 197794.49
- P48 19732.24 197794.49
- P49 19732.24 197794.49
- P50 19732.24 197794.49
- P51 19732.24 197794.49
- P52 19732.24 197794.49
- P53 19732.24 197794.49
- P54 19732.24 197794.49
- P55 19732.24 197794.49
- P56 19732.24 197794.49
- P57 19732.24 197794.49
- P58 19732.24 197794.49
- P59 19732.24 197794.49
- P60 19732.24 197794.49
- P61 19732.24 197794.49
- P62 19732.24 197794.49
- P63 19732.24 197794.49
- P64 19732.24 197794.49
- P65 19732.24 197794.49
- P66 19732.24 197794.49
- P67 19732.24 197794.49
- P68 19732.24 197794.49
- P69 19732.24 197794.49
- P70 19732.24 197794.49
- P71 19732.24 197794.49
- P72 19732.24 197794.49
- P73 19732.24 197794.49
- P74 19732.24 197794.49
- P75 19732.24 197794.49
- P76 19732.24 197794.49
- P77 19732.24 197794.49
- P78 19732.24 197794.49
- P79 19732.24 197794.49
- P80 19732.24 197794.49
- P81 19732.24 197794.49
- P82 19732.24 197794.49
- P83 19732.24 197794.49
- P84 19732.24 197794.49
- P85 19732.24 197794.49
- P86 19732.24 197794.49
- P87 19732.24 197794.49
- P88 19732.24 197794.49
- P89 19732.24 197794.49
- P90 19732.24 197794.49
- P91 19732.24 197794.49
- P92 19732.24 197794.49
- P93 19732.24 197794.49
- P94 19732.24 197794.49
- P95 19732.24 197794.49
- P96 19732.24 197794.49
- P97 19732.24 197794.49
- P98 19732.24 197794.49
- P99 19732.24 197794.49
- P100 19732.24 197794.49



LINE	BEARING	DISTANCE
L1	S 87°35'45" W	4.69'
L2	N 41°59'52" E	104.65'
L3	S 48°36'17" E	34.10'
L4	S 17°25'58" W	54.09'
L5	S 01°06'05" E	96.84'
L6	S 03°33'21" W	86.48'
L7	S 16°01'15" W	74.77'
L8	S 45°13'03" W	70.62'
L9	N 89°26'06" W	67.02'
L10	N 89°30'09" W	127.93'
L11	N 29°33'52" W	59.81'
L12	N 89°26'38" W	119.99'
L13	N 88°58'38" W	86.21'
L14	N 88°59'08" W	111.03'
L15	N 35°31'32" E	88.13'
L16	N 35°31'32" E	71.24'
L17	S 46°10'46" E	140.62'
L18	N 42°45'09" E	35.91'

REFERENCES (CHATHAM COUNTY):

1. PIN 9776200
2. D.B. 581 PG. 897
3. P.S. 97-42

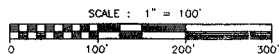
REFERENCES (ORANGE COUNTY):

1. PIN 9776-07-0590
2. PIN 9776-07-2952
3. PIN 9776-68-4003
4. D.B. 410 PG. 541
5. D.B. 1888 PG. 340
6. P.B. 34 PG. 12

NOTES:

1. ALL DISTANCES ARE HORIZONTAL (GROUND).
2. AREAS BY COORDINATE COMPUTATION.
3. THE PROPOSED U.S. HIGHWAY 15-501 R/W AS SHOWN REFLECTS AN APPROXIMATE LOCATION PER CONSTRUCTION DRAWINGS. TRANSFER OF TITLE IS INCOMPLETE. NO MONUMENTATION EXISTS.
4. U.S. HIGHWAY 15-501 UNDER CONSTRUCTION THIS DATE.
5. THIS SURVEY PERFORMED AND PLATTED WITHOUT THE BENEFIT OF A TITLE SEARCH PROVIDED BY A LICENSED NORTH CAROLINA ATTORNEY. THE SURVEYOR ACCEPTS NO LIABILITY ARISING FROM FUTURE DISCOVERIES (FACTS, E.G., PIPES, AND/OR BASEMENTS) PERTAINING TO TITLE.

TOTAL ACREAGE OF JURISDICTIONAL WETLANDS AND WATERS IS 0.456 ACRES



DATE: 31 JANUARY 2004
 SCALE: 1" = 100'
 DRAWN BY: BRIAN WILLIS
 CHECKED BY: RUSSELL ELINGBURG
 FILE NAME: PROCTOR WETLANDS.DWG

WETLAND DELINEATION PLAT OF
 THE PROCTOR, ILIT REAL ESTATE HOLDINGS, LLC, AND LEE MOORE OIL CO. TRACTS
 DOMINION PROJECTS GROUP LP
 WILLIAMS / CHAPEL HILL TOWNSHIPS CHATHAM / ORANGE COUNTIES NORTH CAROLINA

1 OF 1

ELINGBURG LAND SURVEY CO., P.A.
 108 W. CHATHAM STREET
 APEX, NORTH CAROLINA 27502
 RESIDENTIAL COMMERCIAL
 RUSSELL ELINGBURG, KEVIN CHANCE
 P.L.S. 3414-3415-3571
 FAX (919) 363-5372