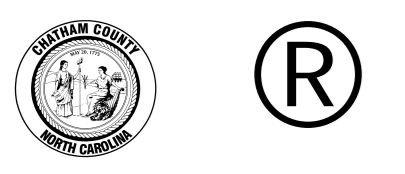
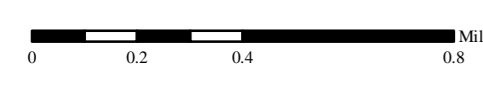
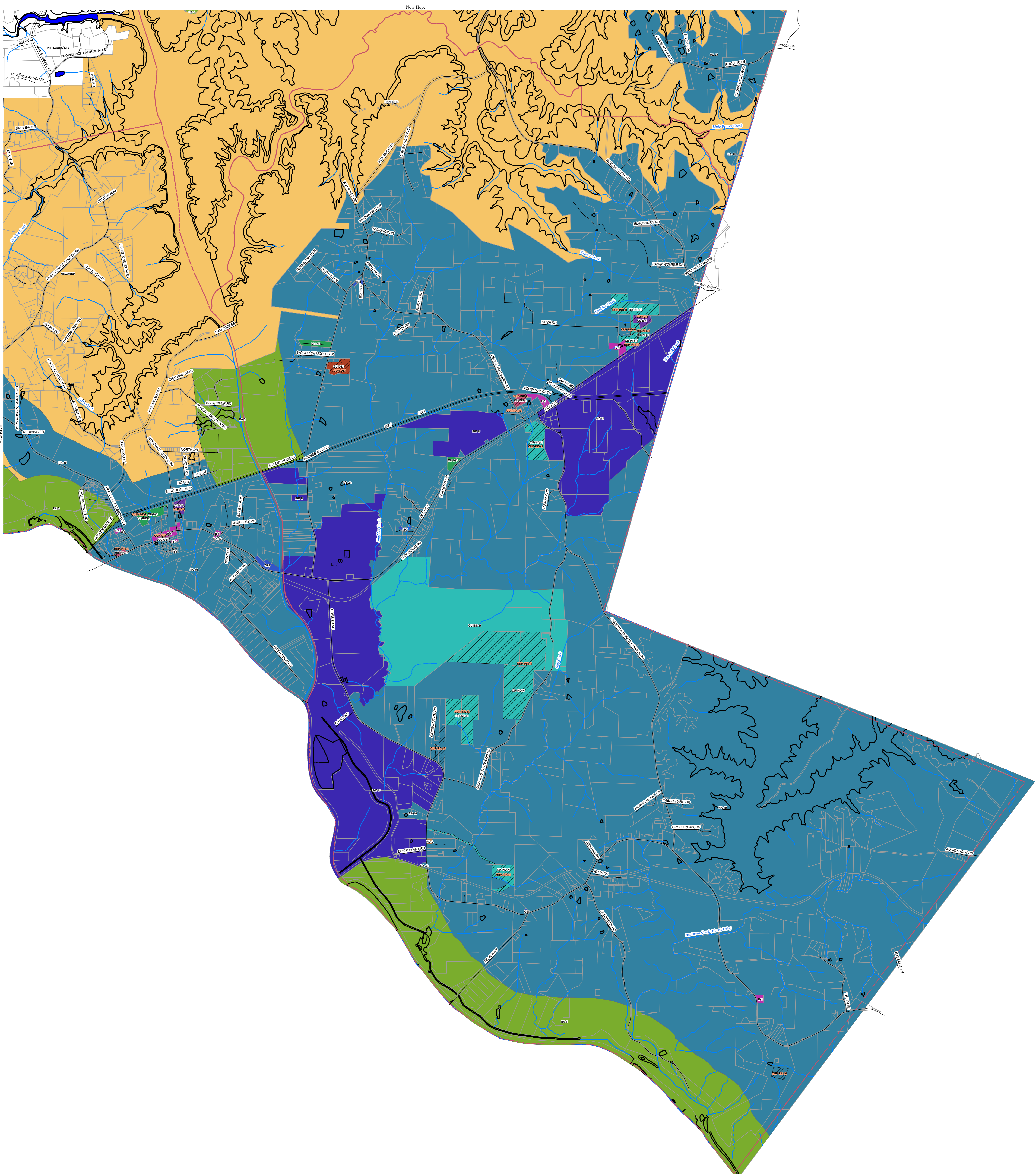


**Chatham County  
Zoning Atlas**

Cape Fear  
Township

\*\*\*THE ZONING DATA SHOWN ON THIS MAP IS IN DRAFT FORMAT AND HAS NOT BEEN APPROVED BY THE CHATHAM COUNTY BOARD OF COMMISSIONERS. PLEASE CONTACT THE CHATHAM COUNTY PLANNING DEPARTMENT AT 919/542-8204 TO CONFIRM THE ZONING ON A SPECIFIC PROPERTY.\*\*\*

- Legend**
- Streets
  - High School Districts
  - Zoning Layer**
  - NAME**
  - B-1
  - CU-B-1
  - CU-IND-H
  - CU-IND-L
  - CU-O&I
  - CU-RA-90
  - CU-D-CC
  - IND-H
  - IND-L
  - MH-NC
  - O&I
  - RA-40
  - RA-5
  - RA-90
  - UNZONED
  - Conditional Use Permits
  - Non-Conformities
  - Zoning Jurisdictions**
  - NAME**
  - CARY ZONING
  - PITTSBORO ZONING
  - SILER CITY ZONING
  - Cary/TownLimits\_region
  - Tax Parcels
  - townships



Prepared by the  
Chatham County  
Planning Department  
Aug 29, 2008

GIS DATA SOURCE  
© 2008 CHATHAM COUNTY, NC  
This map is a digital representation of the zoning data for Cape Fear Township, Chatham County, NC. The data was prepared by the Chatham County Planning Department in August 2008. The map is for informational purposes only and does not constitute a legal document. For more information, please contact the Chatham County Planning Department at 919/542-8204.