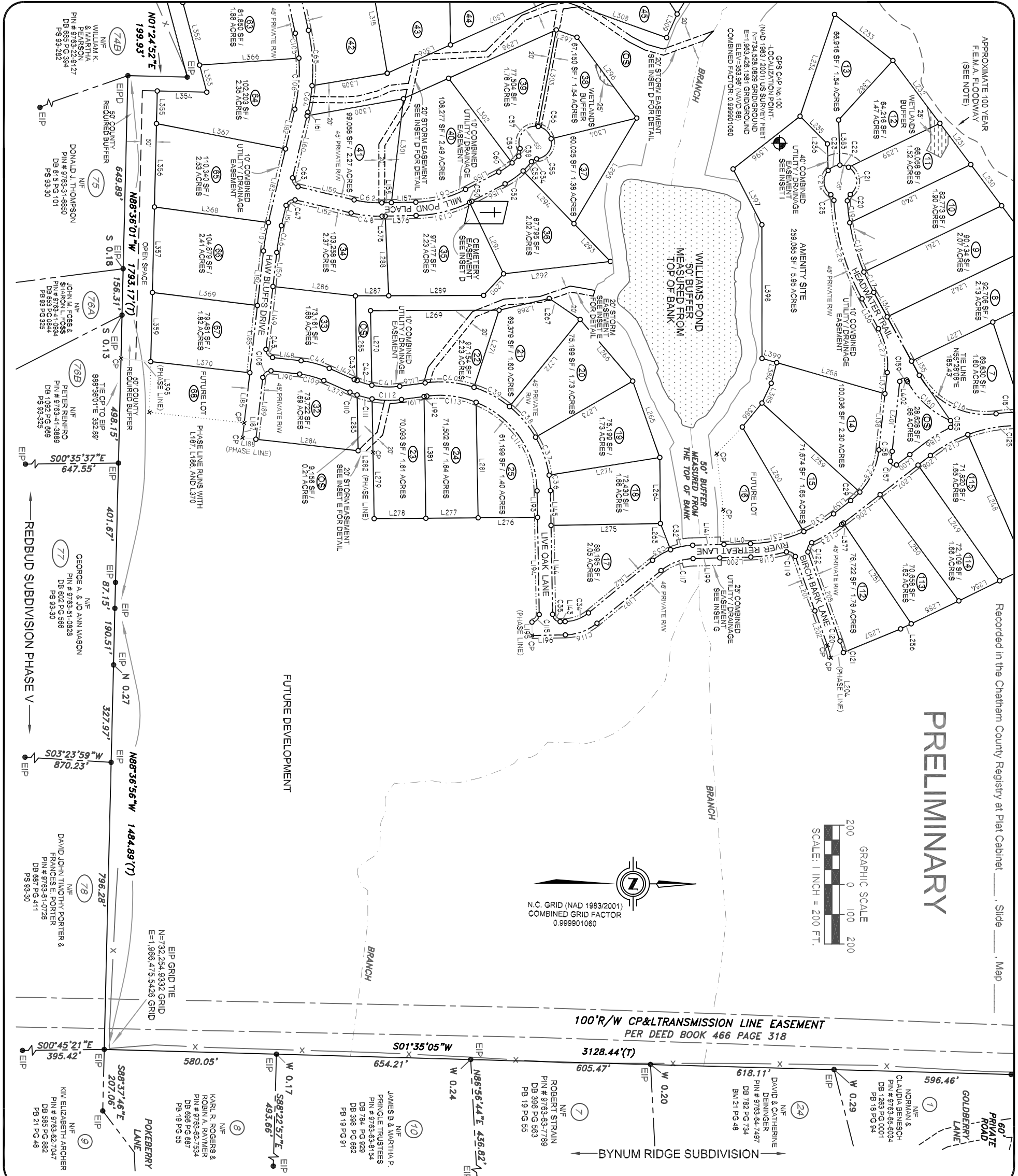
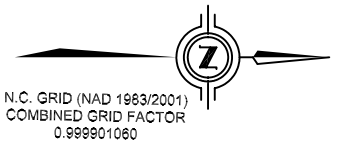
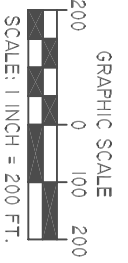


Recorded in the Chatham County Registry at Plat Cabinet _____, Slide _____, Map _____

PRELIMINARY



100'R/W CP<RANSMISSION LINE EASEMENT
PER DEED BOOK 466 PAGE 318

BYNUM RIDGE SUBDIVISION

CLIENT:
CRESCENT COMMUNITIES
CRESCENT RESOURCES, L.L.C.
8450 FALLS OF NEUSE ROAD
RALEIGH, NORTH CAROLINA 27615

SURVEYED BY:
ESP ESP Associates, P.A.
14001 Weston Pkwy
Suite 100
Cary, NC 27513
phone 919.678.1070
fax 919.677.1252
www.espprojects.com

SUBDIVISION PLAT OF:
THE RETREAT ON HAW RIVER, LLC
PHASE IA / CRESCENT RESOURCES, LLC
LYING BETWEEN S.R. No.1711 AND THE HAW RIVER
BALDWIN TOWNSHIP / CHATHAM COUNTY
NORTH CAROLINA

| | | | |
|-------------|------------------|------------|-----------|
| DATE | 8/22/07 | SCALE | 1" = 200' |
| DRAWN BY | K.D.M. | CHECKED BY | J.J.P. |
| REVISIONS | | | |
| DESCRIPTION | SUBDIVISION PLAT | | |
| SHEET | 4 OF 9 | | |