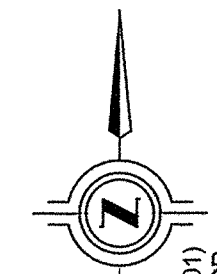
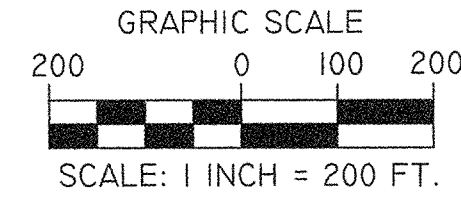
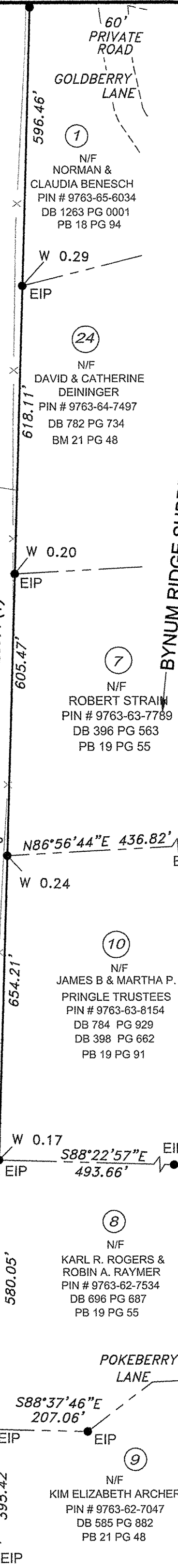
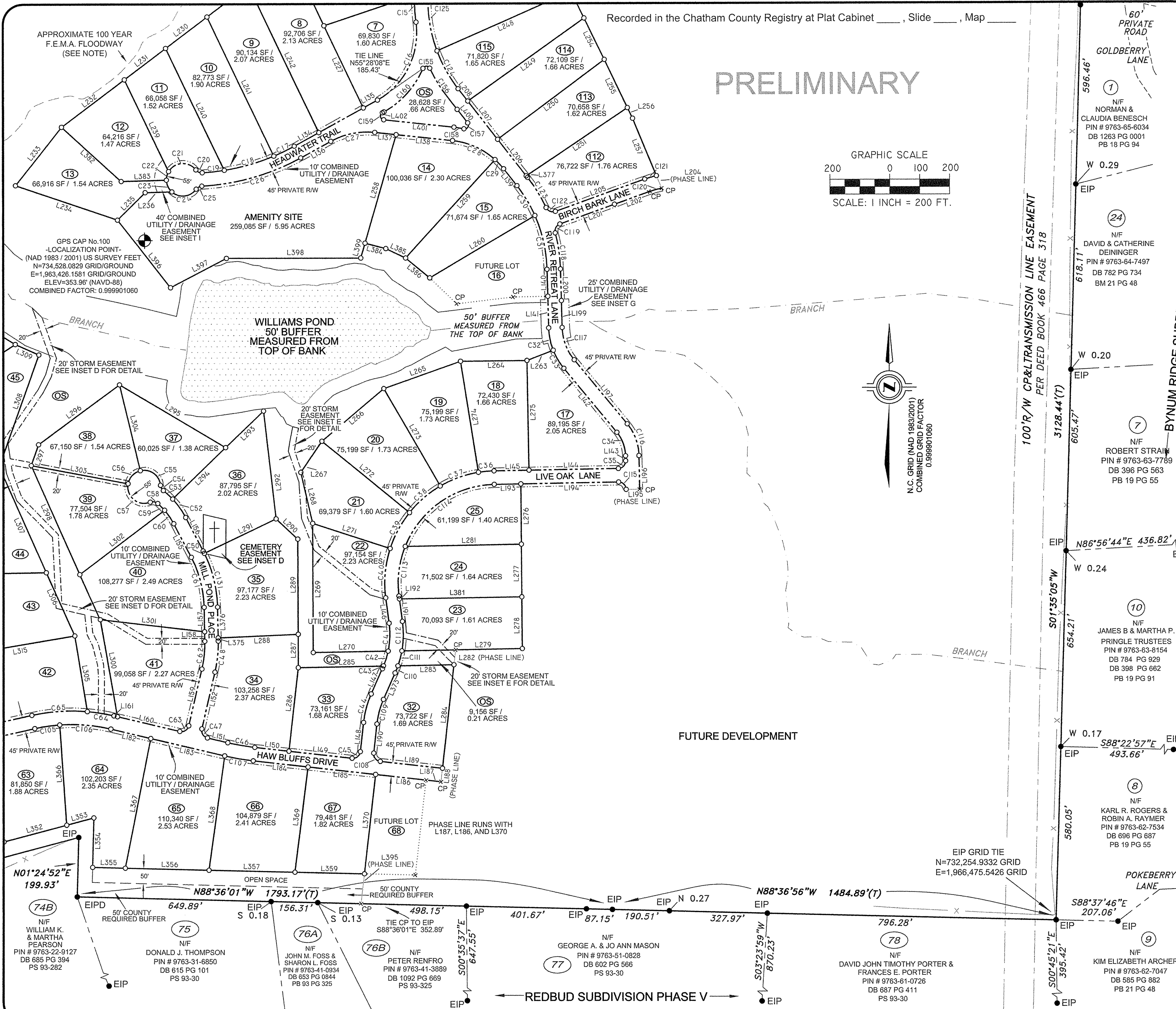


PRELIMINARY



N.C. GRID (NAD 1983/2001)
COMBINED GRID FACTOR
0.999901060



CLIENT:
CRESCENT COMMUNITIES
CRESCENT RESOURCES, L.L.C.
8450 FALLS OF NEUSE ROAD
RALEIGH, NORTH CAROLINA 27615

SURVEYED BY:
ESP Associates, P.A.
14001 Weston Pkwy
Suite 100
Cary, NC 27513
phone 919.678.1070
fax 919.677.1252
www.espassociates.com

SUBDIVISION PLAT OF:
**THE RETREAT ON HAW RIVER, LLC
PHASE IA / CRESCENT RESOURCES, LLC**
LYING BETWEEN S.R. NO. 1711 AND THE HAW RIVER
BALDWIN TOWNSHIP / CHATHAM COUNTY
NORTH CAROLINA

DATE 8/9/07	SCALE 1" = 200'
DRAWN BY K.D.M.	CHECKED BY J.J.P.
REVISIONS	
-DESCRIPTION- SUBDIVISION PLAT	
SHEET 4 OF 9	