



I, Charles O. Eason, of the County of Chatham, State of North Carolina, do hereby certify that the above and foregoing is a true and correct copy of the original as the same appears in my files and records, and that the same is a true and correct copy of the original as the same appears in my files and records, and that the same is a true and correct copy of the original as the same appears in my files and records.

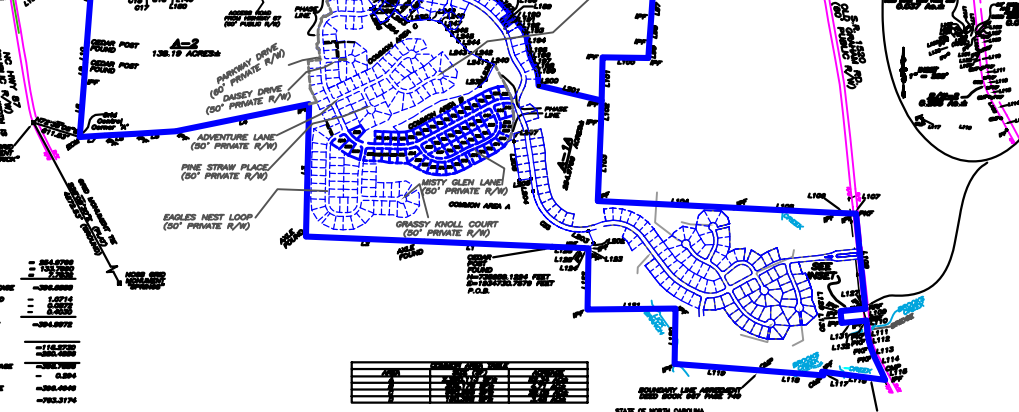
CHAS. O. EASON, P.L.S. L-3889

TRACT NO.	ACRES	OWNER	REMARKS
1	0.15
2	0.15
3	0.15
4	0.15
5	0.15
6	0.15
7	0.15
8	0.15
9	0.15
10	0.15
11	0.15
12	0.15
13	0.15
14	0.15
15	0.15
16	0.15
17	0.15
18	0.15
19	0.15
20	0.15
21	0.15
22	0.15
23	0.15
24	0.15
25	0.15
26	0.15
27	0.15
28	0.15
29	0.15
30	0.15
31	0.15
32	0.15
33	0.15
34	0.15
35	0.15
36	0.15
37	0.15
38	0.15
39	0.15
40	0.15
41	0.15
42	0.15
43	0.15
44	0.15
45	0.15
46	0.15
47	0.15
48	0.15
49	0.15
50	0.15
51	0.15
52	0.15
53	0.15
54	0.15
55	0.15
56	0.15
57	0.15
58	0.15
59	0.15
60	0.15
61	0.15
62	0.15
63	0.15
64	0.15
65	0.15
66	0.15
67	0.15
68	0.15
69	0.15
70	0.15
71	0.15
72	0.15
73	0.15
74	0.15
75	0.15
76	0.15
77	0.15
78	0.15
79	0.15
80	0.15
81	0.15
82	0.15
83	0.15
84	0.15
85	0.15
86	0.15
87	0.15
88	0.15
89	0.15
90	0.15
91	0.15
92	0.15
93	0.15
94	0.15
95	0.15
96	0.15
97	0.15
98	0.15
99	0.15
100	0.15

ADJACENT AREAS

TO THE NORTH
 TO THE SOUTH
 TO THE EAST
 TO THE WEST

TOTAL GROSS ACRES: 116.2700
 TOTAL NET ACRES: 116.2700



I, Charles O. Eason, of the County of Chatham, State of North Carolina, do hereby certify that the above and foregoing is a true and correct copy of the original as the same appears in my files and records, and that the same is a true and correct copy of the original as the same appears in my files and records, and that the same is a true and correct copy of the original as the same appears in my files and records.

CHAS. O. EASON, P.L.S. L-3889

TRACT NO.	ACRES	OWNER	REMARKS
1	0.15
2	0.15
3	0.15
4	0.15
5	0.15
6	0.15
7	0.15
8	0.15
9	0.15
10	0.15
11	0.15
12	0.15
13	0.15
14	0.15
15	0.15
16	0.15
17	0.15
18	0.15
19	0.15
20	0.15
21	0.15
22	0.15
23	0.15
24	0.15
25	0.15
26	0.15
27	0.15
28	0.15
29	0.15
30	0.15
31	0.15
32	0.15
33	0.15
34	0.15
35	0.15
36	0.15
37	0.15
38	0.15
39	0.15
40	0.15
41	0.15
42	0.15
43	0.15
44	0.15
45	0.15
46	0.15
47	0.15
48	0.15
49	0.15
50	0.15
51	0.15
52	0.15
53	0.15
54	0.15
55	0.15
56	0.15
57	0.15
58	0.15
59	0.15
60	0.15
61	0.15
62	0.15
63	0.15
64	0.15
65	0.15
66	0.15
67	0.15
68	0.15
69	0.15
70	0.15
71	0.15
72	0.15
73	0.15
74	0.15
75	0.15
76	0.15
77	0.15
78	0.15
79	0.15
80	0.15
81	0.15
82	0.15
83	0.15
84	0.15
85	0.15
86	0.15
87	0.15
88	0.15
89	0.15
90	0.15
91	0.15
92	0.15
93	0.15
94	0.15
95	0.15
96	0.15
97	0.15
98	0.15
99	0.15
100	0.15

**PLAT OF SUBDIVISION
 FOR
 THE PARKWAY MEADOWVIEW**

FINAL PLAT
 BOOK 188/PAGE 258
 CENTER TOWNSHIP -- CHATHAM COUNTY -- NORTH CAROLINA

APRIL 23, 2007 SCALE: 1 INCH = 600 FEET
 PREPARED BY
 ABSOLUTE LAND SURVEYING AND MAPPING, P.C.
 0191542-0074
 MAILING ADDRESS -- 117 NORTH CHATHAM AVENUE, SILVER CITY, N.C. 27344
 PHYSICAL ADDRESS -- 984 EAST STREET, SUITE 210, PITTSBORO, N.C. 27312
 www.absoluteand.com

PRELIMINARY

ALSW JOB # -- 070409.dwg/070409-COVER.dwg