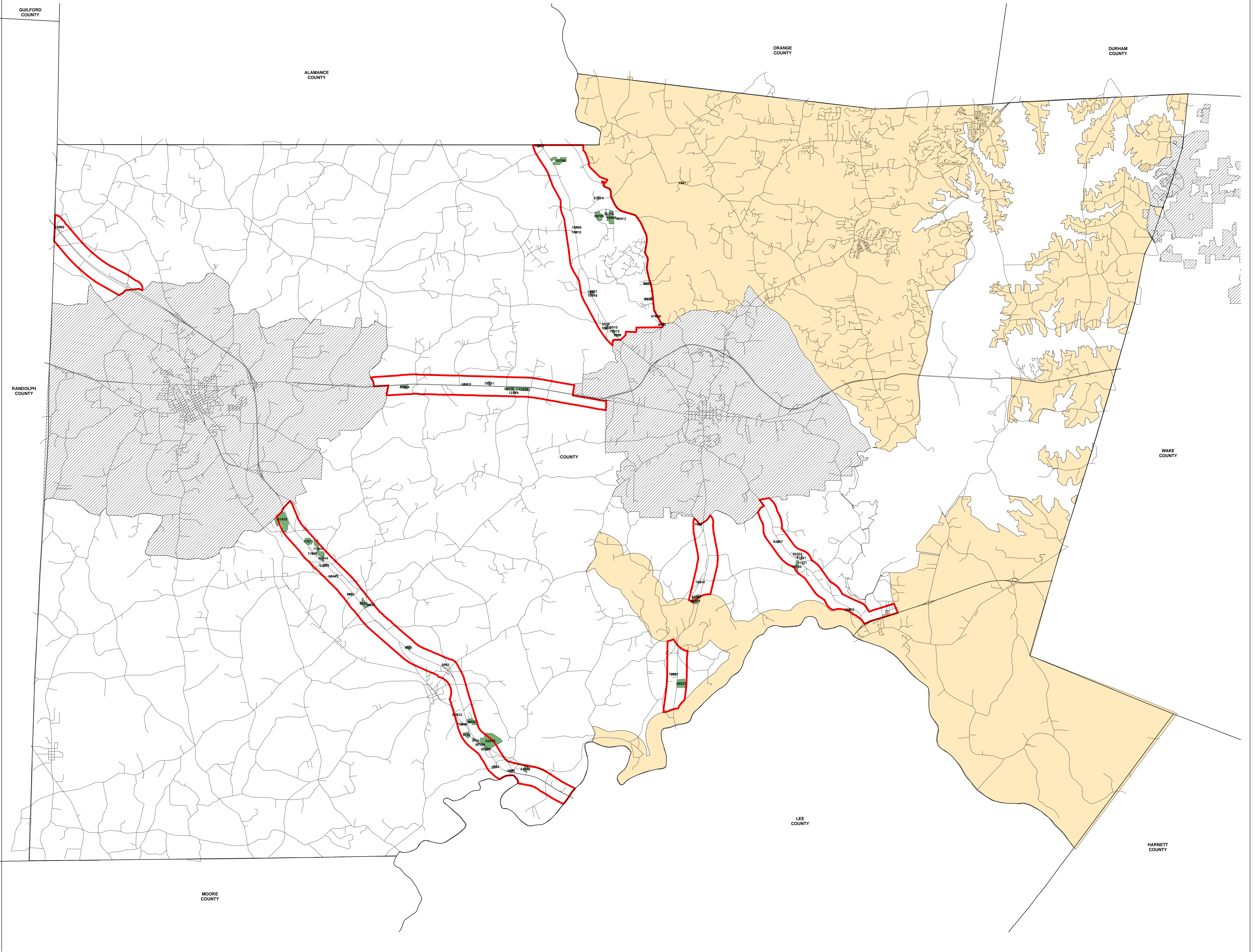


Areas Recommended by BOC
for Initial Zoning:
Nonconformities



Legend

- cb100
- Areas for Rezoning
- Non-conforming_businesses
- CaryTownLimits_region

Zoning Jurisdictions

NAME_

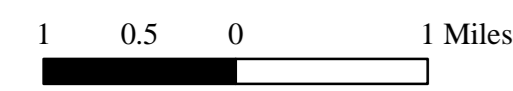
- COUNTY ZONING
- UNZONED

Zoning Jurisdictions

NAME_

- PITTSBORO ZONING
- SILER CITY ZONING

1 inch equals 1 miles



5

GIS DATA DISCLAIMER
FOR CARYTOWN COUNTY NC

Information contained herein is provided for informational purposes only. The County of Chatham provides geographic information systems (GIS) data, maps, and metadata with no claim as to the completeness, accuracy, or warranty of its content, position, or otherwise. The user hereby acknowledges that the Geographic Information System (GIS) data contained on this site are subject to constant change and that the accuracy cannot be guaranteed. The County is not liable and has no responsibility for the use of this data for any purpose other than that for which it was intended. The County is not responsible for the ability of users to fulfill their intended purposes in accessing or using GIS data or metadata or for the accuracy of the data. The data on this site are provided "as is" without warranty of any kind, including, but not limited to, the implied warranty of merchantability. Since the use of this data is for informational purposes only, the County assumes no obligation to update the user in the use of such data or in the development, use, or maintenance of any applications applied to or associated with the data or metadata.

MOORE COUNTY