

**SIGN PLANTING DETAIL**  
SCALE: 1" = 10'

LARGE EVERGREEN SHRUB  
MEDIUM EVERGREEN SHRUB  
SMALL SHRUBS AND VARIOUS  
GROUNDCOVERS

NIF  
CARNegie, BURTON S & DELORES N  
PIN 0702-93-0945.000  
PARCEL 80692  
DB:1227 PG:138  
ZONED: RA-40

NIF  
PROULX, DAVID M & ELIZABETH  
PIN 0702-94-4102  
PARCEL 80693  
DB:1052 PG:836  
ZONED: RA-40

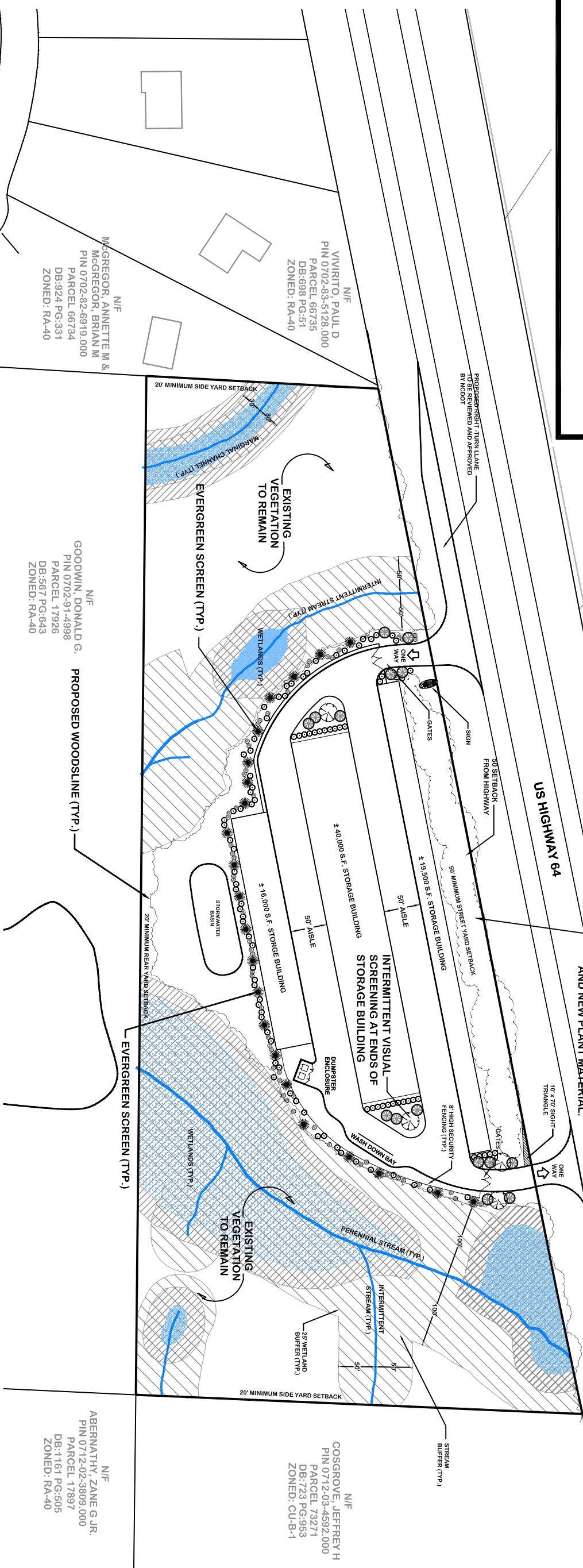
NIF  
GRAHAM-WADDELL, BEVERLY  
PIN 0702-94-9117.000  
PARCEL 80694  
DB:1060 PG:1027  
ZONED: RA-40

NIF  
FISH, JEAN S.  
PIN 0712-04-3101  
PARCEL 75201  
DB:649 PG:399  
ZONED: RA-40

INTERMITTENT VISUAL SCREENING WITH  
COMBINATION OF EXISTING VEGETATION  
AND NEW PLANT MATERIAL.

US HIGHWAY 64

PROPOSED RIGHT-TURN LANE  
TO BE REVIEWED AND APPROVED  
BY NCDOT



NIF  
VIVIRITO, PAUL D  
PIN 0702-83-5128.000  
PARCEL 66735  
DB:698 PG:51  
ZONED: RA-40

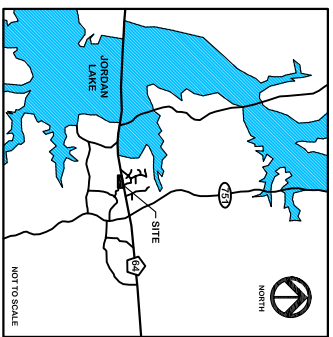
NIF  
GOODWIN, DONALD G.  
PIN 0702-91-4998  
PARCEL 17926  
DB:567 PG:643  
ZONED: RA-40

PROPOSED WOODSLINE (TYP.)

NIF  
MCGREGOR, ANNETTE M &  
MCGREGOR, BRIAN M  
PIN 0702-82-6919.000  
PARCEL 66734  
DB:924 PG:331  
ZONED: RA-40

NIF  
COSGROVE, JEFFREY H  
PIN 0712-03-4592.000  
PARCEL 73271  
DB:723 PG:953  
ZONED: CU-B-1

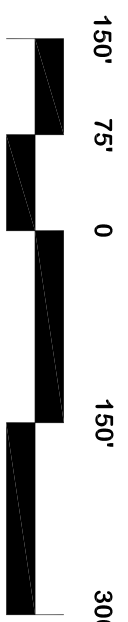
NIF  
ABERNATHY, ZANE G JR.  
PIN 0712-02-3809.000  
PARCEL 17897  
DB:1161 PG:505  
ZONED: RA-40



VICINITY MAP  
NORTH TO SCALE

- LARGE EVERGREEN SHRUBS**
- WAX MYRTLE (*Mycrs corifolia*)
  - YAUPON HOLLY (*Ilex vomitoria*)
  - ANISE (*Illicium parvifolium*)
  - CLEVERA (*Transtrictonia gymnanthera*)
  - JAPANESE PRIVET (*Ligustrum japonicum*)
  - CAROLINA CHERRY LAUREL (*Prunus caroliniana*)
- MEDIUM EVERGREEN SHRUBS**
- INKERRY HOLLY (*Ilex glabra*)
  - JAPANESE BARBERRY (*Berberis thunbergii*)
  - JAPANESE HOLLY (*Ilex crenata*)
  - LOROPETALUM (*Loropetalum chinense*)
- SMALL SHRUBS**
- GOLDMOUND SPIRAEA (*Spiraea x Goldmound*)
  - DAVID VIBURNUM (*Viburnum davidii*)
  - GLOSSY ABELIA (*Abelia grandiflora*)
  - DWARF YAUPON HOLLY (*Ilex vomitoria 'Nana'*)

- DECIDUOUS SHADE TREES**
- NUTTALL OAK (*Quercus nuttallii* 'Highpoint')
  - RED MAPLE (*Acer rubrum* 'October Glory')
  - RED BUD (*Liquidambar styraciflua*)
  - GINKGO (*Ginkgo biloba*)
  - WILLOW OAK (*Quercus phellos*)
- ORNAMENTAL DECIDUOUS TREES**
- EASTERN REDBUD (*Cercis canadensis*)
  - DOGWOOD (*Cornus florida*)
  - PAND CHERRY (*Prunus x yedoensis*)
  - ORBE MYRTLE (*Lagotis chinensis*)
- EVERGREEN TREES**
- RED CEDAR (*Juniperus virginiana*)
  - AMERICAN HOLLY (*Ilex opaca*)
  - JAPANESE CEDAR (*Cryptomeria japonica*)
  - GREEN GIANT ARBOREVIATA (*Thuja x Green Giant*)
  - LEVAND CYPRESS (*Cupressocyparis leylandii*)



SCALE: 1" = 150'

NOTES:  
1. THE PLANTS ABOVE ARE SUGGESTIONS AND ARE SUBJECT TO CHANGE AT SITE PLAN APPROVAL PER SITE CONDITIONS.  
2. PRELIMINARY WETLAND AND STREAM DELINEATION PROVIDED BY SREC. SUBJECT TO CHANGE PENDING FIELD SURVEY AND REVIEW BY USACE AND NCDWA.

**CE Group, inc.**  
LAND PLANNING  
CIVIL ENGINEERING  
LAND SURVEYING  
11000 Regency Parkway, Suite 410, Cary, N.C. 27518  
Voice (919) 367-8790 Fax (919) 367-8791

Port Side  
BOAT & RV STORAGE  
Conceptual Landscape Plan  
Chatham County, North Carolina

**PRELIMINARY**  
FOR REVIEW ONLY  
NOT RELEASED  
FOR CONSTRUCTION  
Date: August 15, 2007

NORTH

5